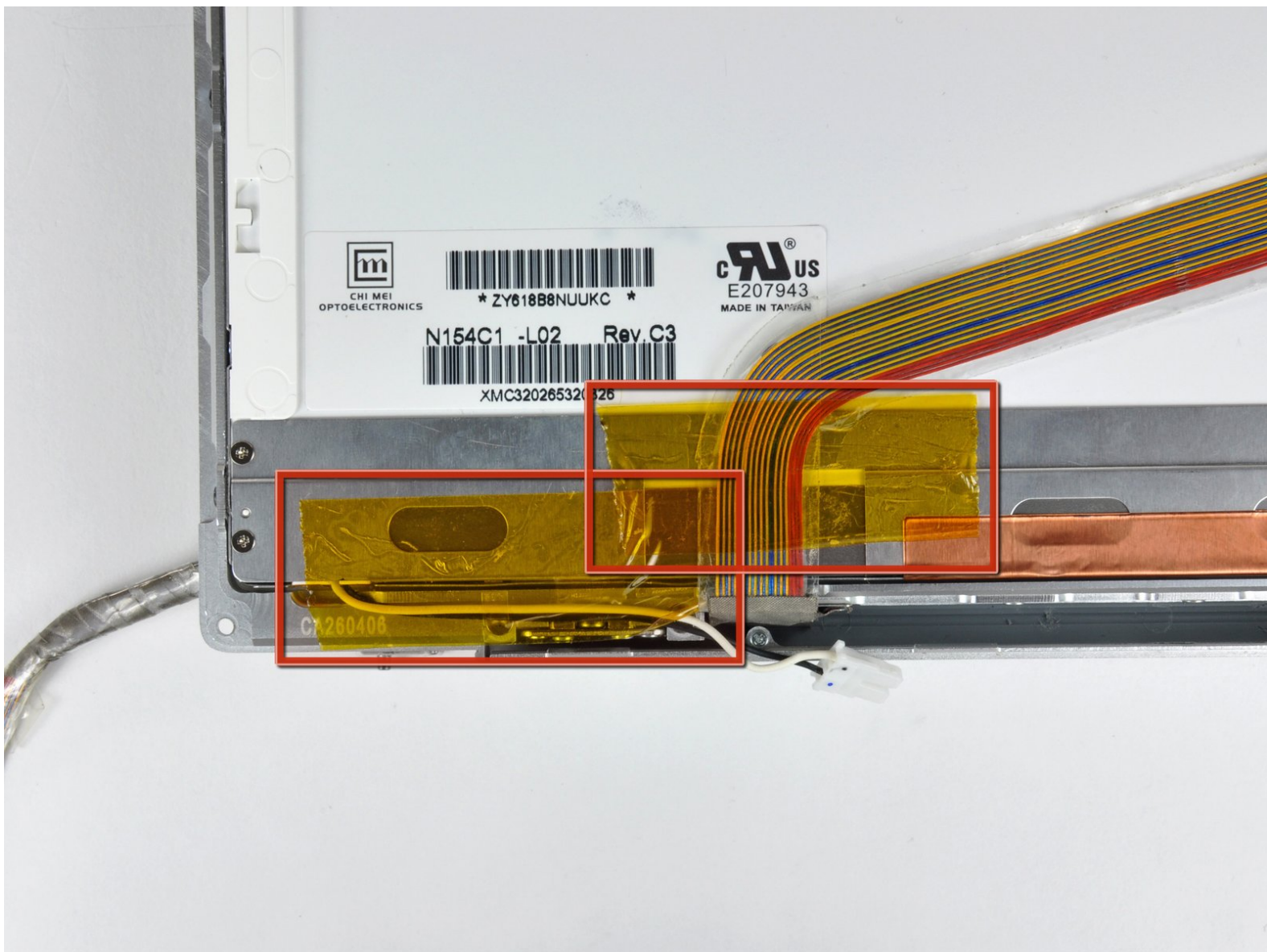




MacBook Pro 15" Core Duo Model A1150 Clutch Assembly Replacement

Written By: Andrew Bookholt



INTRODUCTION

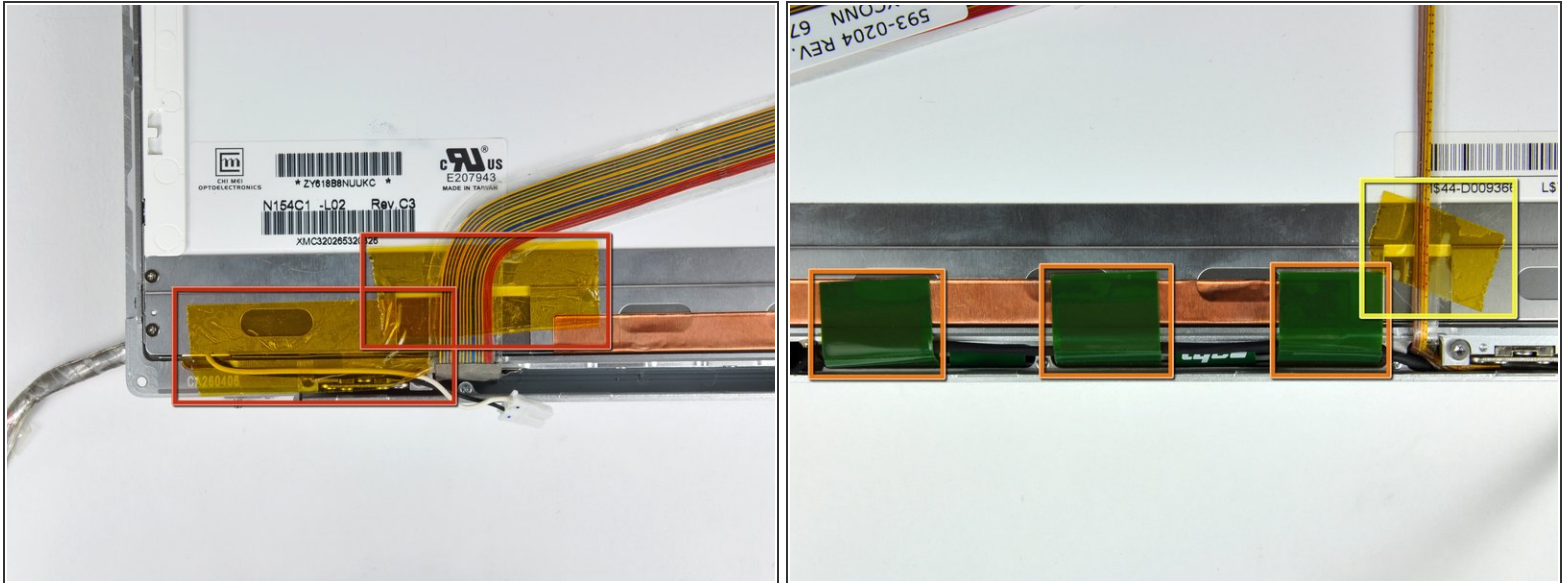
This is an internal private guide that serves as a prereq.



TOOLS:

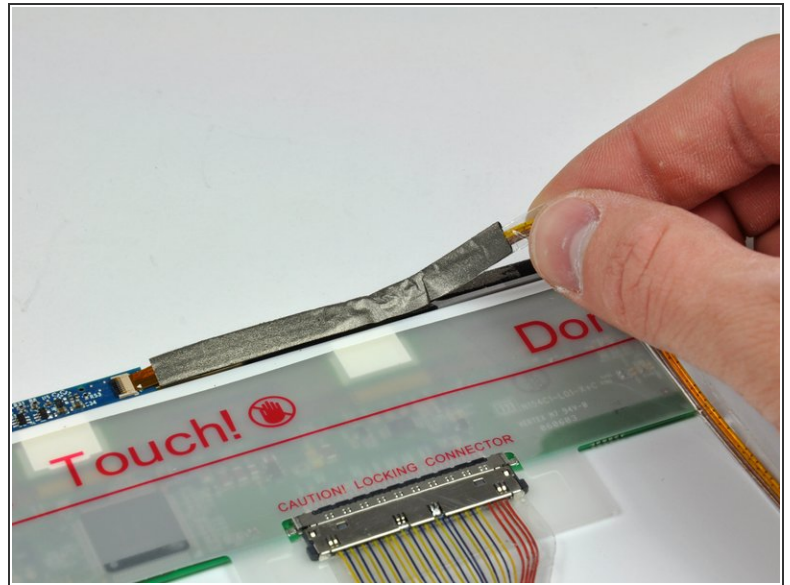
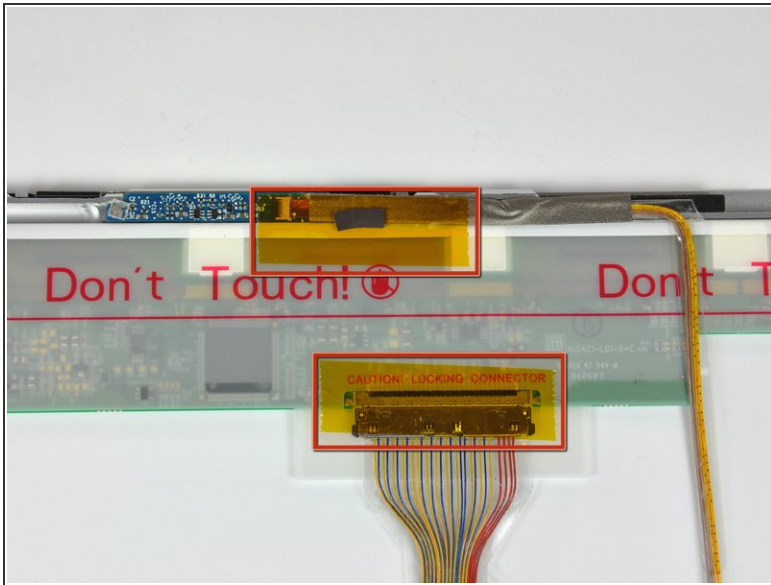
- [Phillips #00 Screwdriver](#) (1)
-

Step 1 — Clutch Assembly



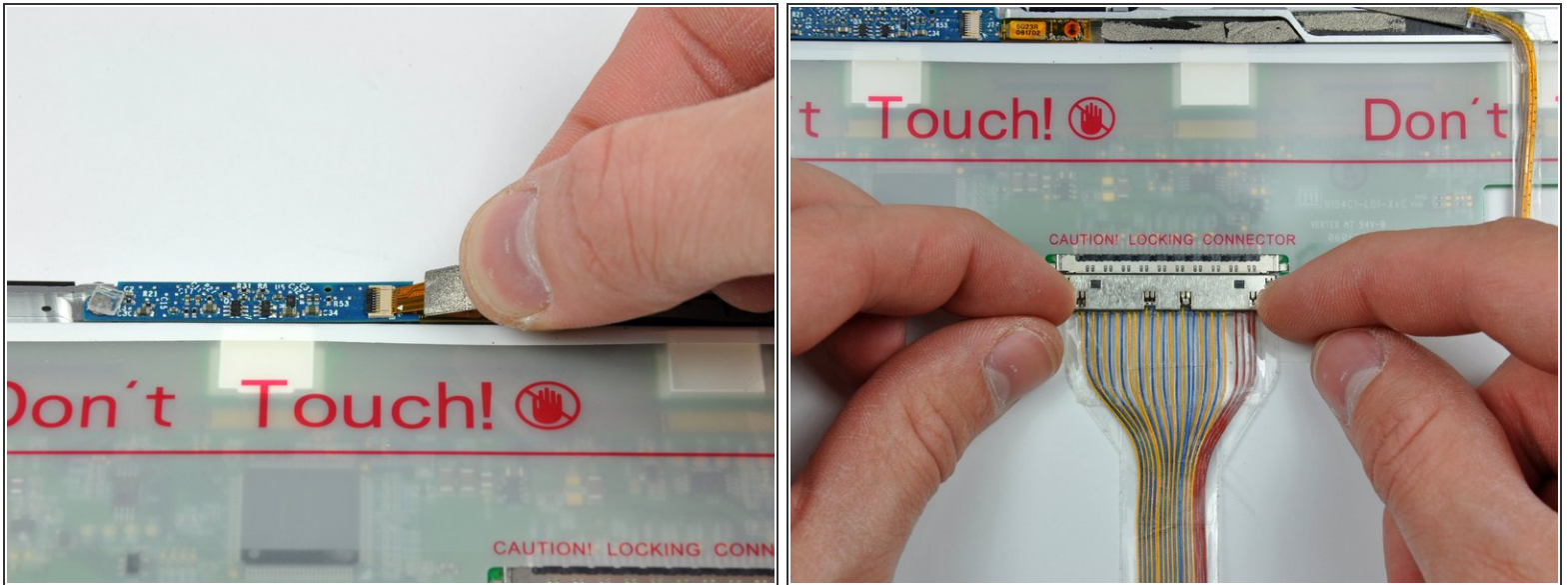
- Remove the pieces of yellow kapton tape from the bottom left corner of the display.
- Peel the three green antenna ground straps off the copper tape along the bottom edge of the LCD.
 - ⚠ The adhesive connecting these straps to the display is very strong. An edged tool is helpful to separate the adhesive while you peel the straps off.
- Remove the piece of tape securing the camera cable to the LCD.

Step 2



- Remove the pieces of tape covering the display data cable and camera cable connectors.
- Carefully peel the camera cable off the foam tape along the top edge of the LCD.

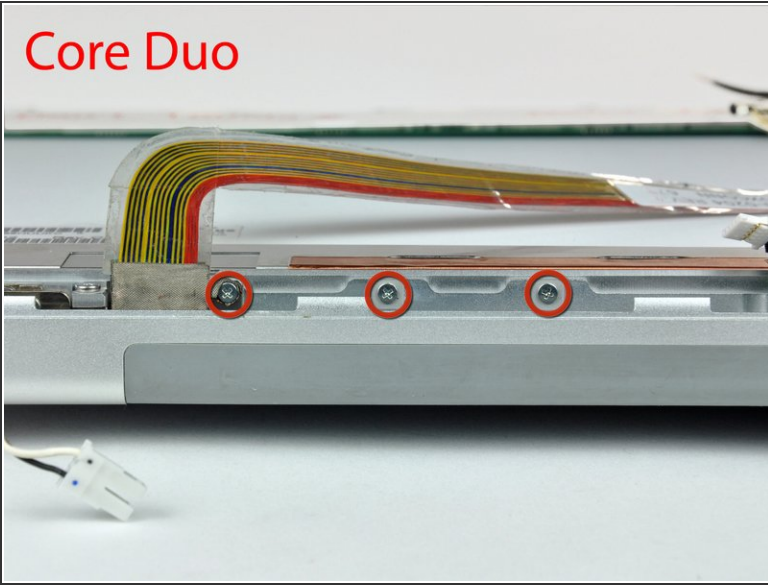
Step 3



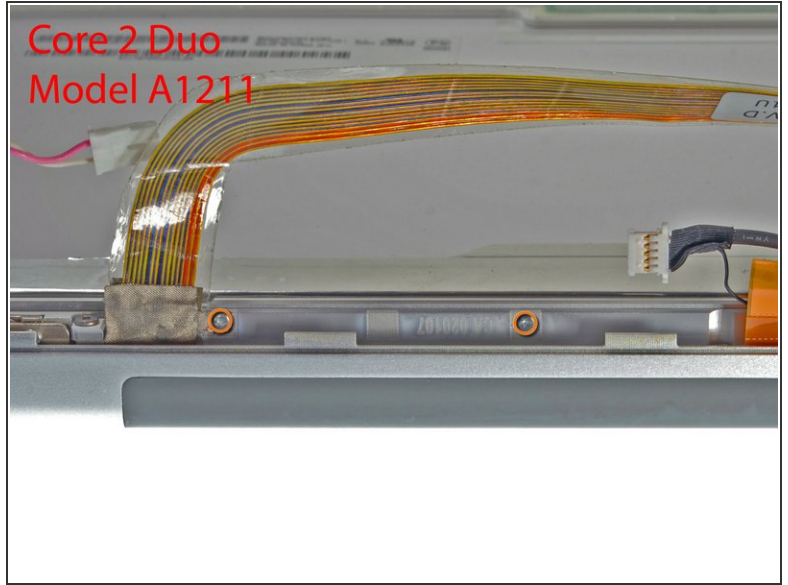
- Gently pull the camera cable away from its socket on the camera board.
- Pull the display data cable connector away from its socket on the LCD.
- Pull both cables parallel to the face of the logic board.

Step 4

Core Duo

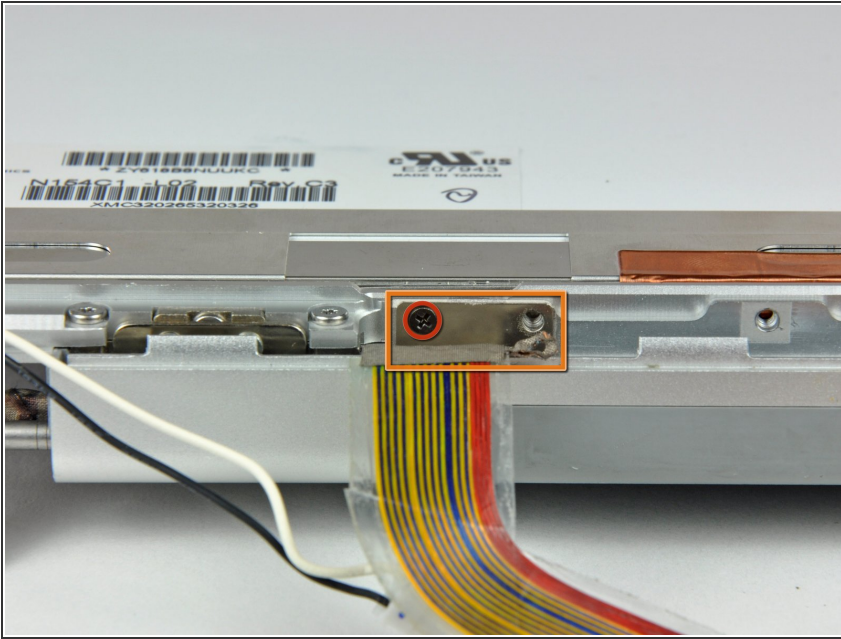


Core 2 Duo
Model A1211



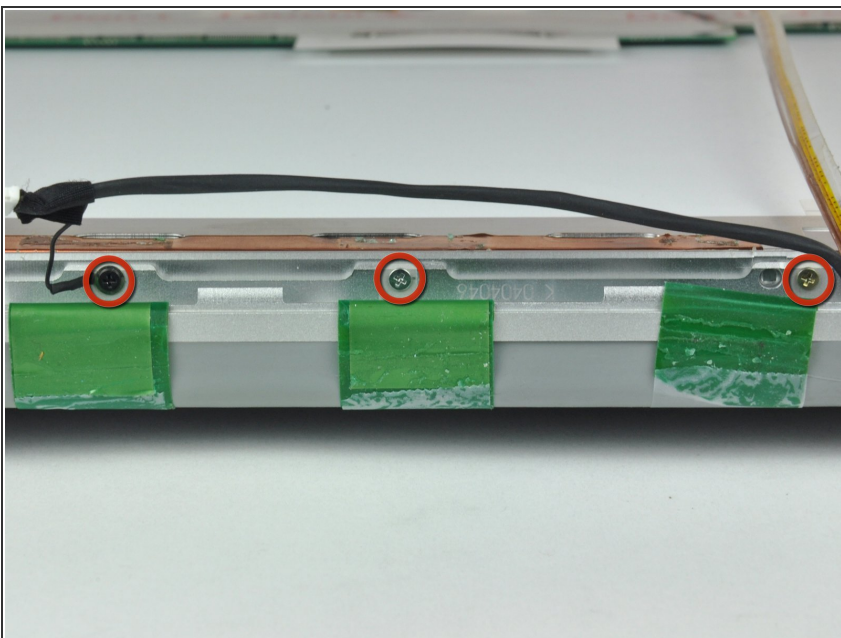
- If you have a Core Duo machine, refer to picture 1 and remove three Phillips screws connecting the clutch assembly to the lower edge of the front display bezel near the display data cable.
- If you have a Core 2 Duo Model A1211 machine, refer to picture 2 and remove two Phillips screws connecting the clutch assembly to the lower edge of the front display bezel near the display data cable.

Step 5



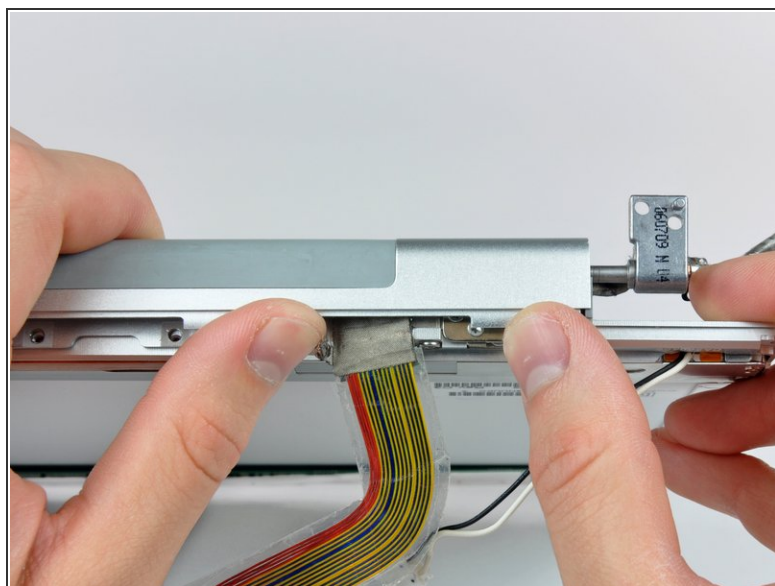
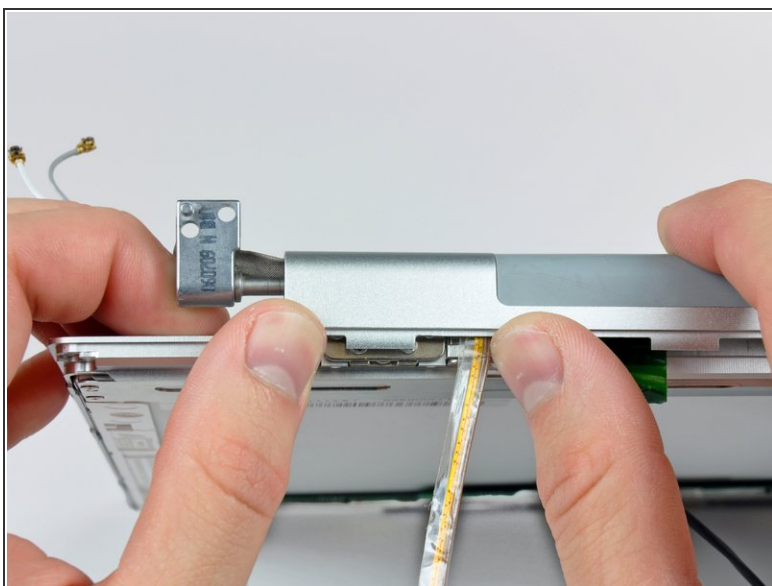
- Remove the small Phillips screw from behind the display data cable.
- Remove the small rectangular steel bracket by sliding it away from the right clutch hinge.
- ⓘ If you have a Core 2 Duo Model A1211, there is no steel bracket. Simply remove the screw and continue to the next step.

Step 6



- Remove three Phillips screws attaching the clutch assembly to the lower edge of the front display bezel.
- ⚠ The inverter cable ground loop is a very thin and delicate wire. Work gently.

Step 7



- Push the open edge of the clutch cover away from the left clutch hinge to pop it off the clips attaching the two parts.
- ⓘ If necessary, repeat this process for the right side of the clutch assembly.
- Remove the clutch assembly from the front display bezel.

To reassemble your device, follow these instructions in reverse order.