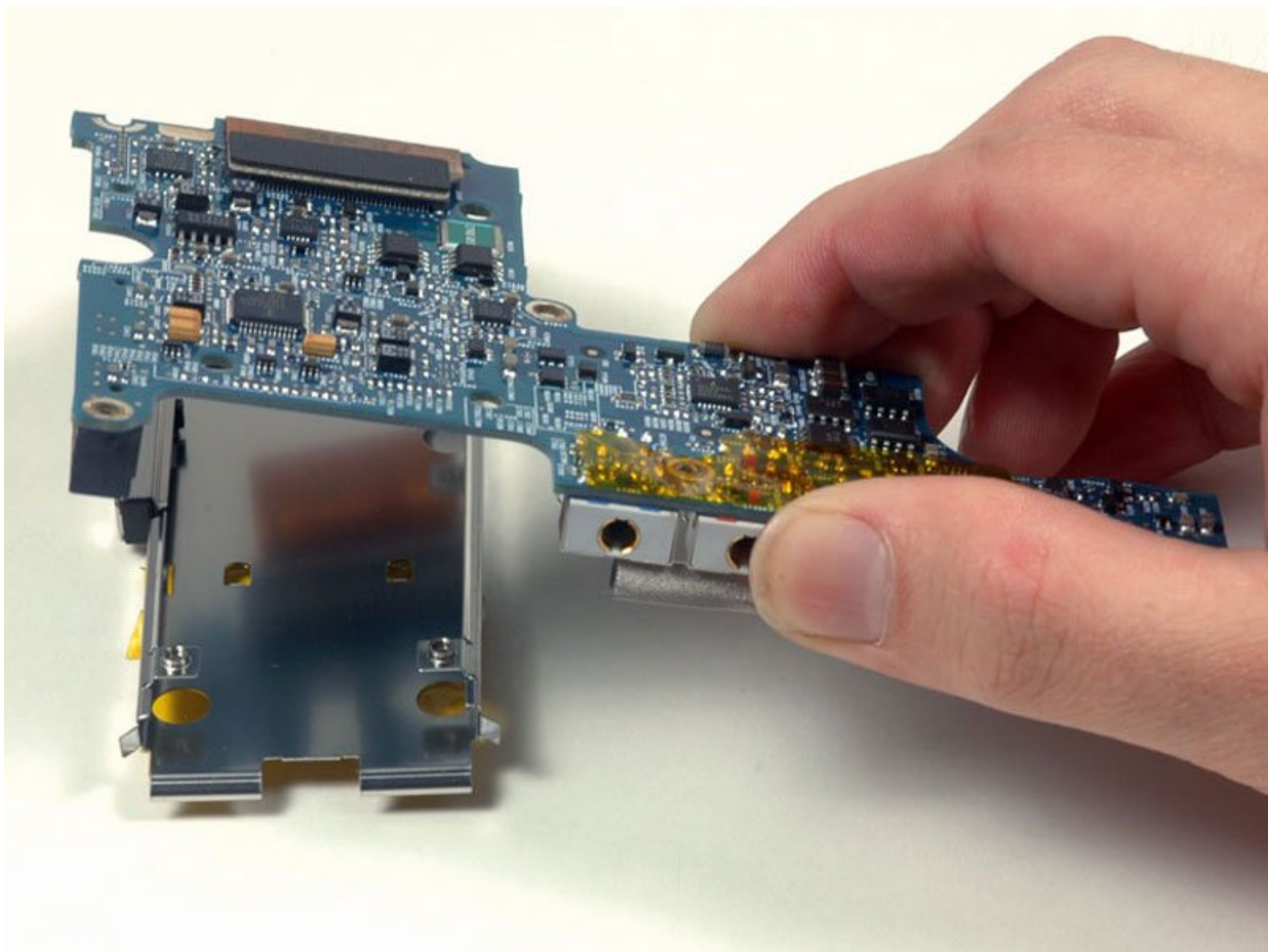




MacBook Pro 15" Core Duo Model A1150 Left I/O Board Replacement

Written By: iRobot



INTRODUCTION

Provides power to the machine and includes all ports on the left side of the machine.



TOOLS:

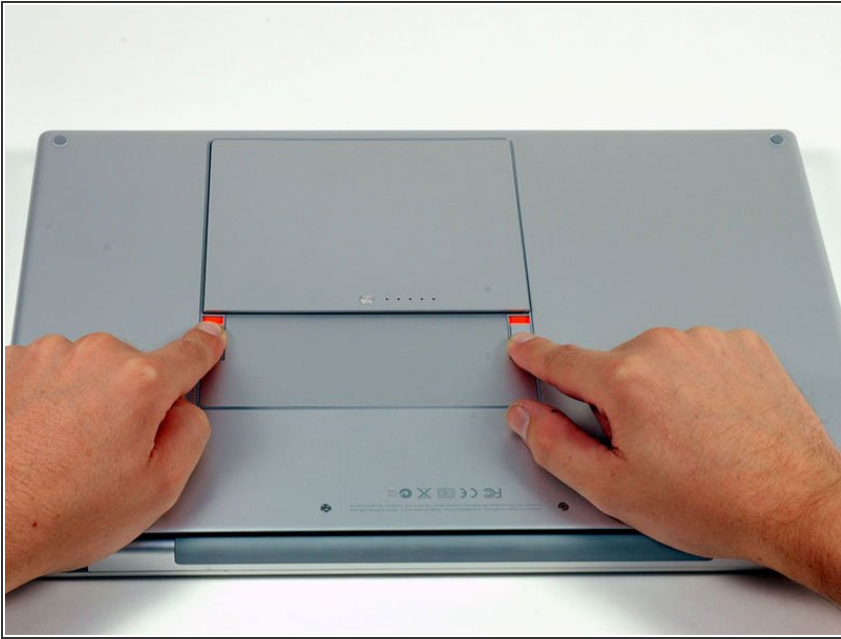
- [4mm Nut Driver](#) (1)
- [Phillips #00 Screwdriver](#) (1)
- [Spudger](#) (1)
- [T6 Torx Screwdriver](#) (1)



PARTS:

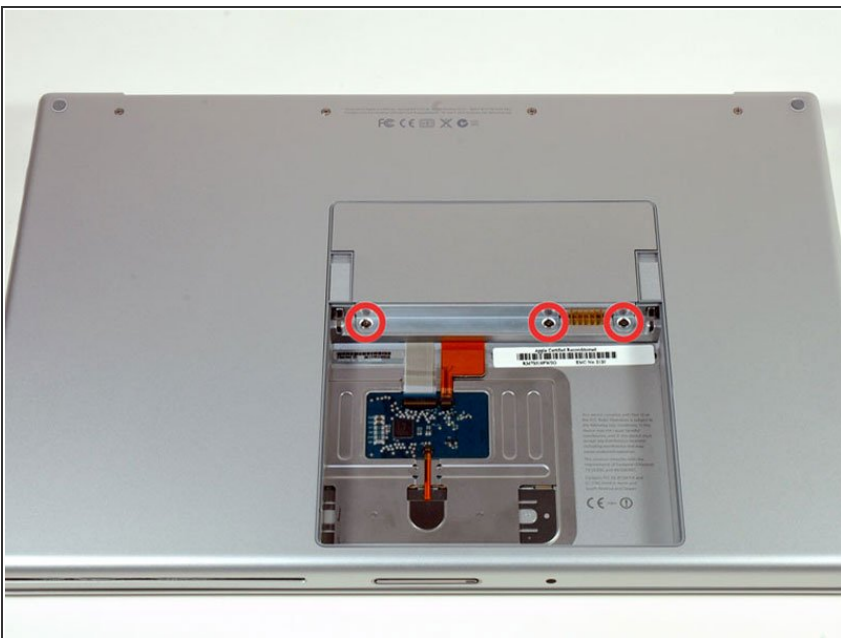
- [MacBook Pro 15" \(Model A1150\) Left I/O Board](#) (1)

Step 1 — Battery



- Use your fingers to push both battery release tabs away from the battery, and lift the battery out of the computer.

Step 2 — Memory Door



- Remove the three identical Phillips screws from the memory door.
- ★ Make sure to record which sets of screws came from where. This will help when re-assembling.

Step 3



- Lift the memory door up enough to get a grip on it, and slide it toward you, pulling it away from the casing.

Step 4 — Upper Case



- Remove the two Phillips screws in the battery compartment near the latch.

Step 5



- Remove the following 6 screws:
 - Two 10 mm T6 Torx screws on either side of the RAM slot.
 - Four 14.5 mm Phillips screws along the hinge.

Step 6



- Remove the four Phillips screws on the port side of the computer.

Step 7



- Rotate the computer 90 degrees and remove the two Phillips screws from the rear of the computer.

Step 8



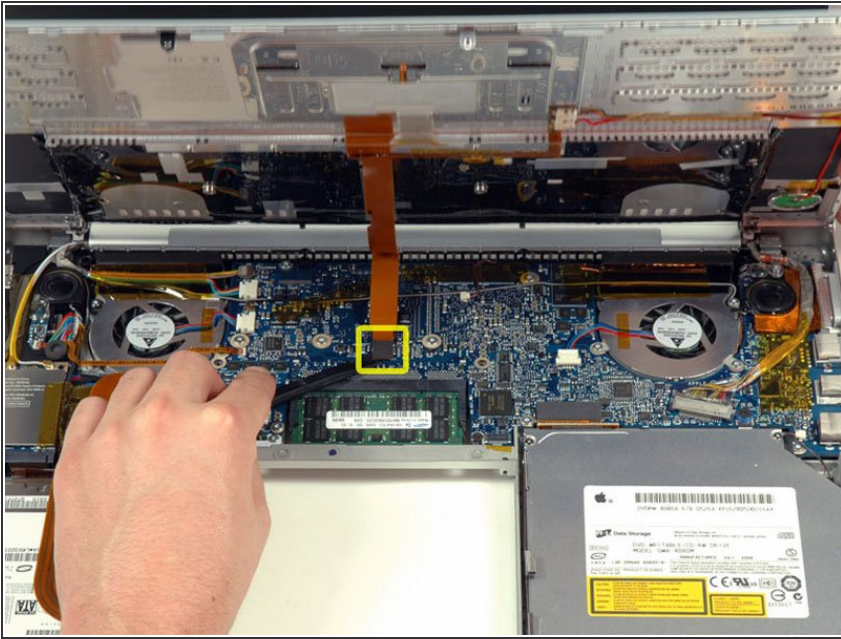
- Rotate the computer 90 degrees again and remove the four Phillips screws from the side of the computer.

Step 9



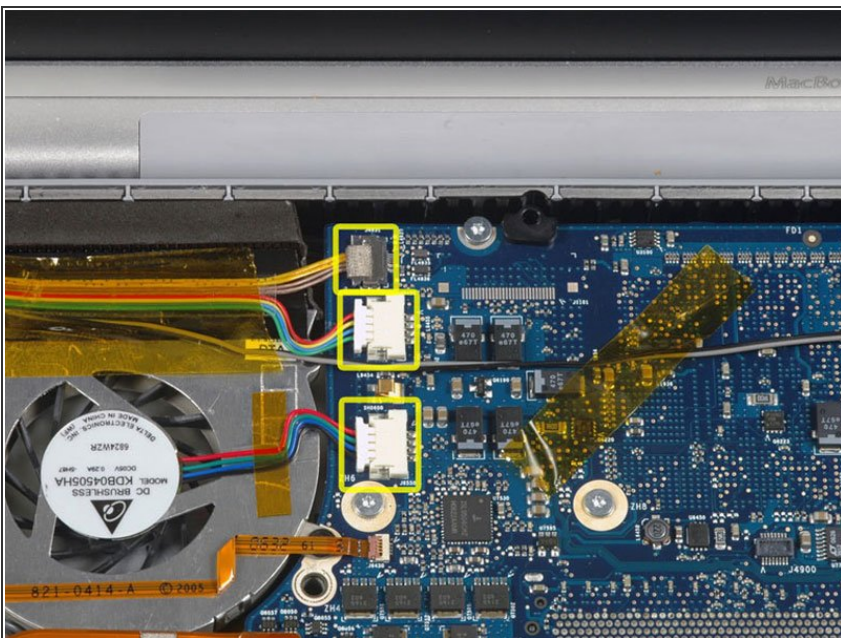
- ❗ Do not yank the upper case off quickly. The case is attached to the logic board via a ribbon cable.
- Lift up at the rear of the case and work your fingers along the sides, freeing the case as you go. Once you have freed the sides, you may need to rock the case up and down to free the front of the upper case. This stage can be quite tricky. Over the DVD reader are 4 tabs set back which pull out vertically.
- Note that the two small tongues on the left hand front of the upper case may bend while you remove the upper case. When re-installing, you may need to bend them back to fit in the grooves in the lower case.

Step 10



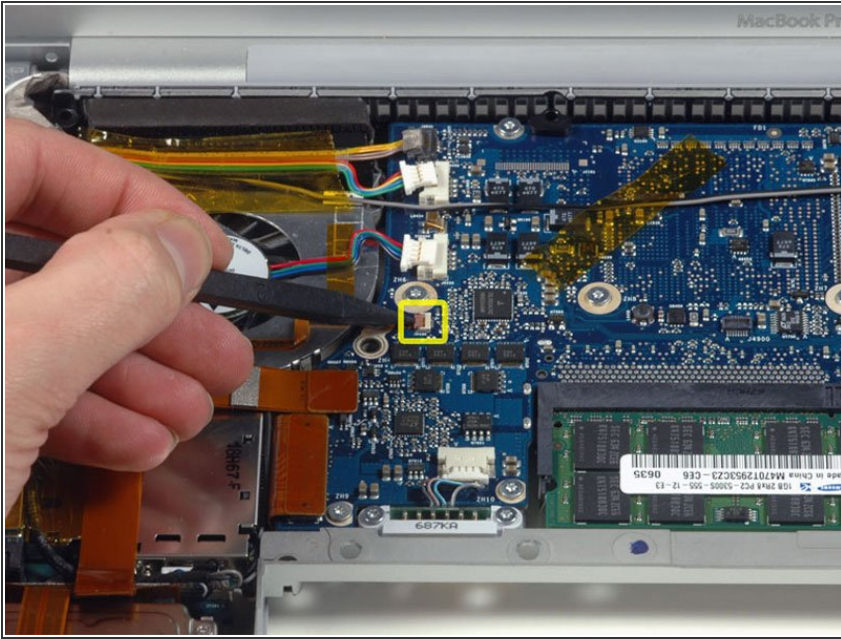
- Disconnect the trackpad and keyboard ribbon cable from the logic board, removing tape as necessary.
- Remove the upper case.

Step 11 — Left Fan



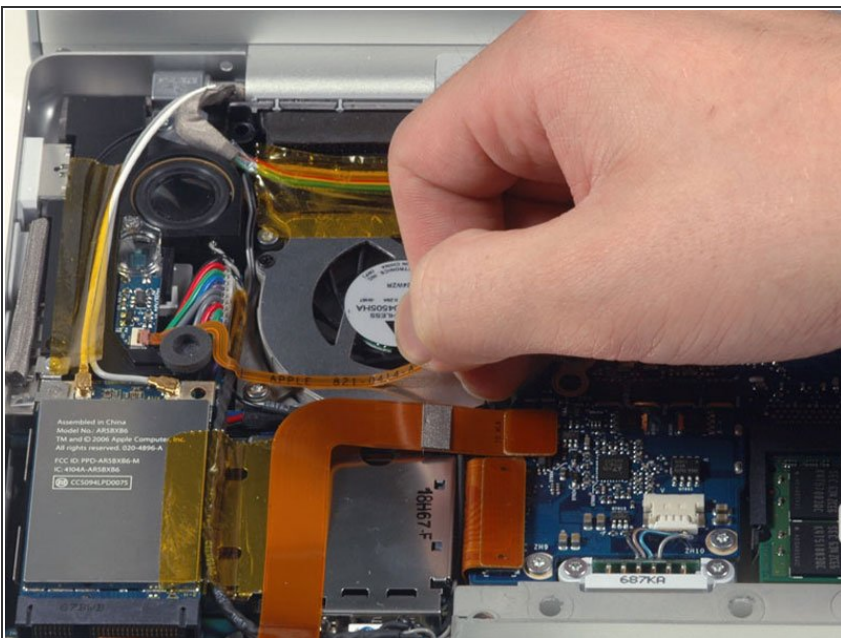
- Disconnect the iSight, inverter, and left fan cables from the logic board.

Step 12



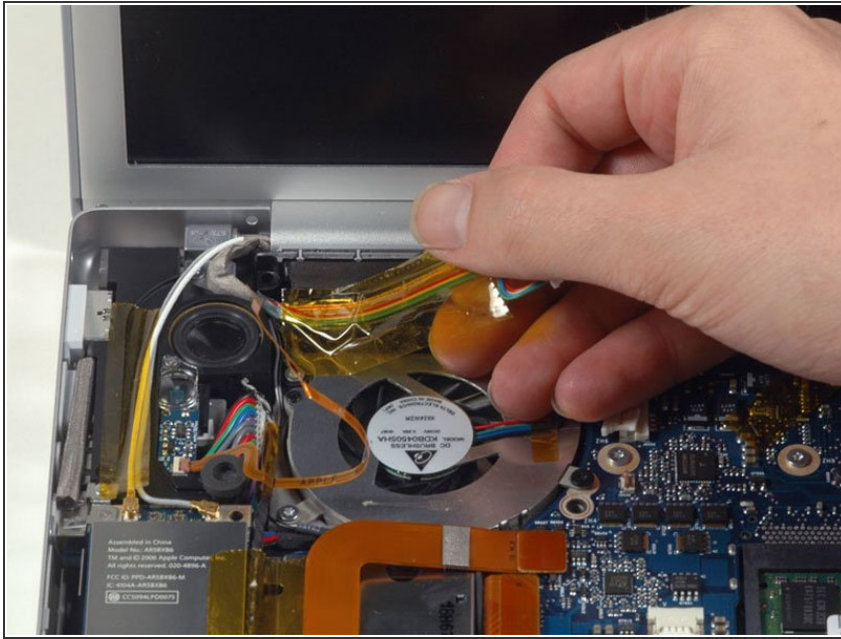
- Use a spudger to flip up the brown plastic flap securing the left ambient light sensor cable to the logic board.
- Slide the left ambient light sensor cable to the left and out of its connector.

Step 13



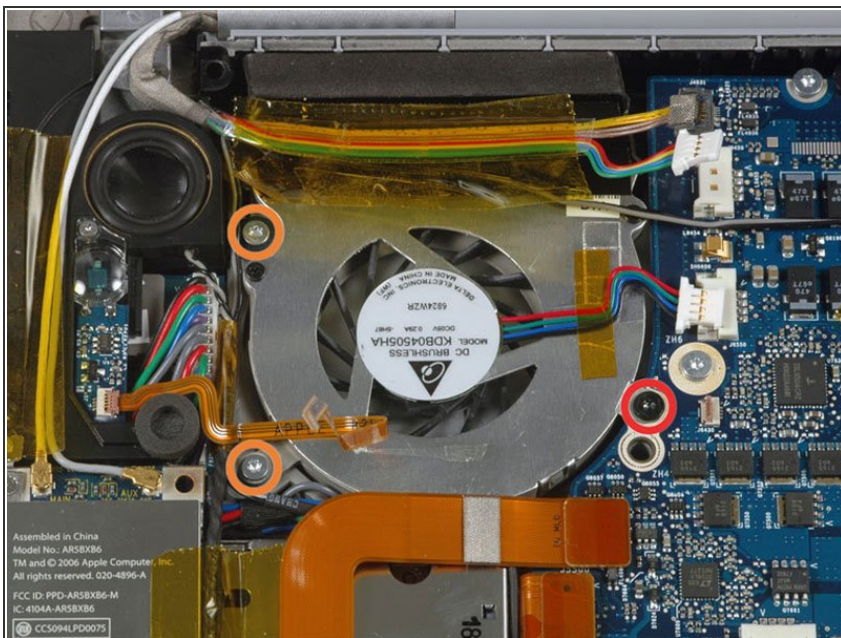
- Peel up the left ambient light sensor cable from above the left fan.

Step 14



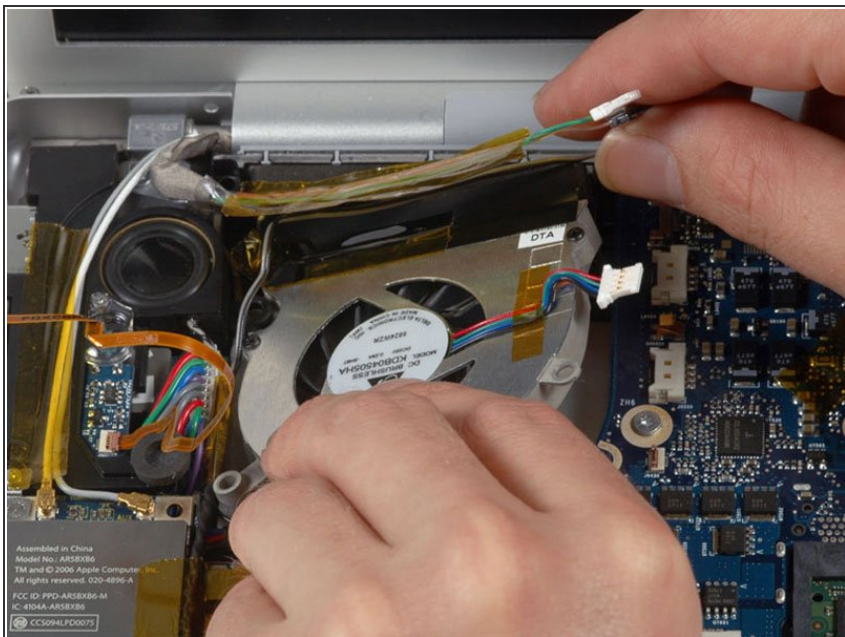
- Peel up the iSight and inverter cables from above the left fan, removing tape as necessary.

Step 15



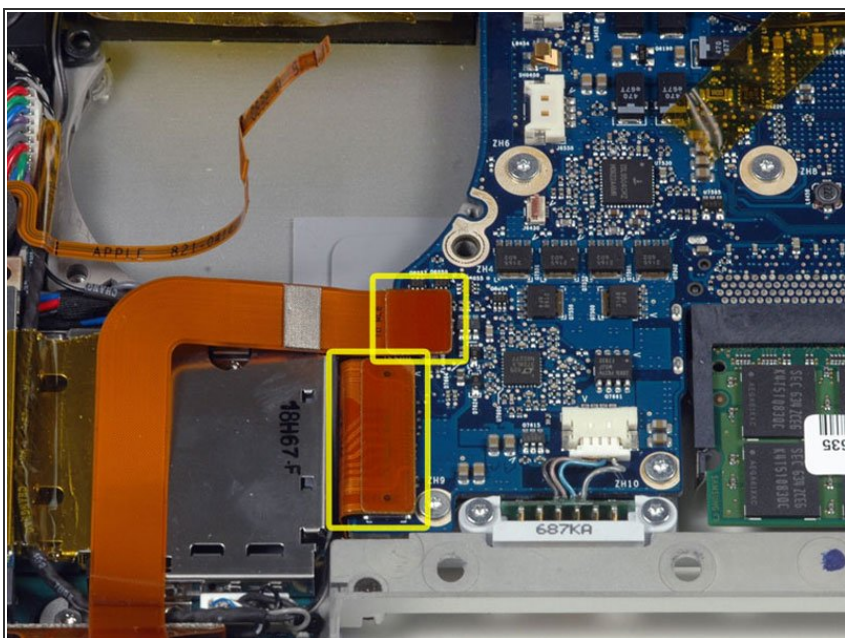
- Remove the following 3 screws:
 - One 6.2 mm black T6 Torx screw from the right side of the fan.
 - Two 9.4 mm silver T6 Torx screws from the left side of the fan.

Step 16



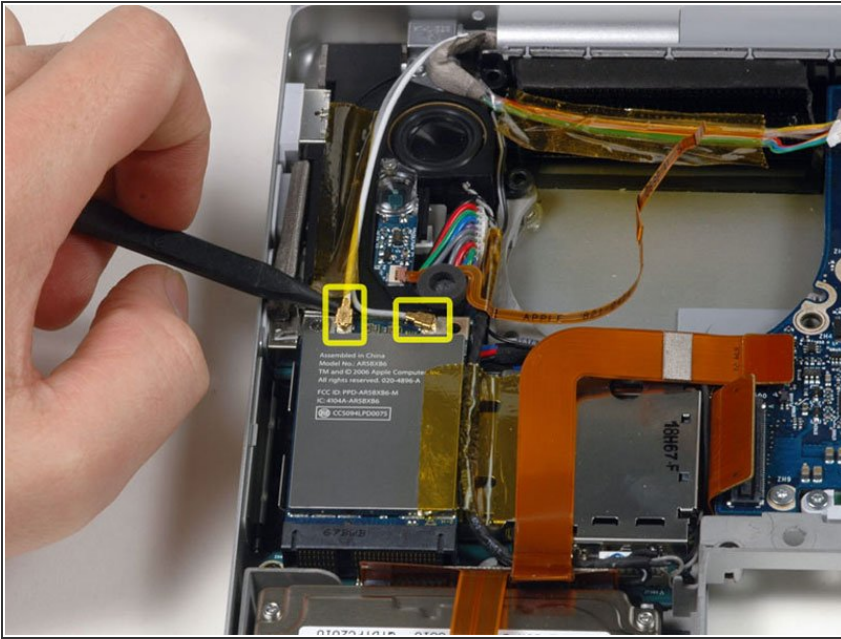
- Lift the fan up and carefully peel up the tape securing the fan to the heat sink as you go.

Step 17 — Left I/O Board



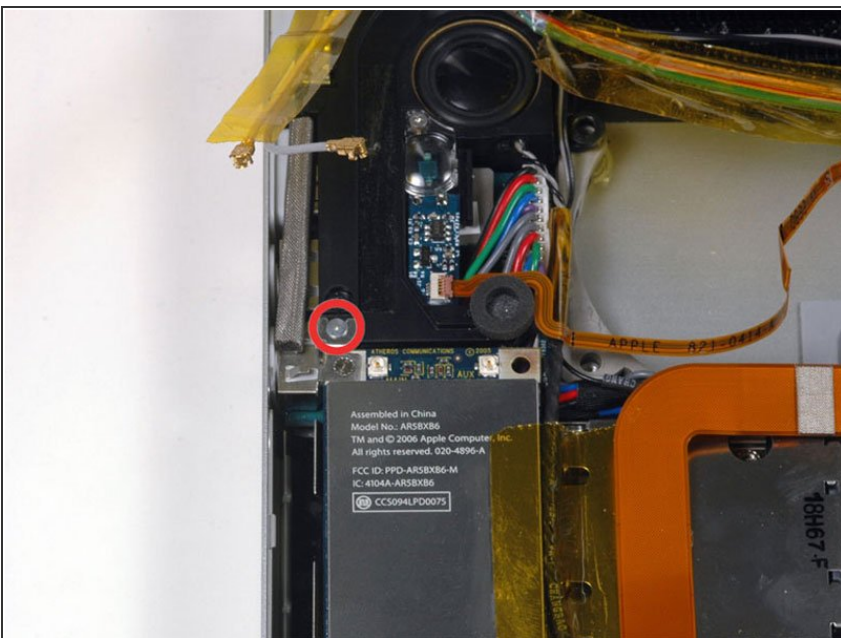
- Disconnect the hard drive and ExpressCard connectors from the left side of the logic board.

Step 18



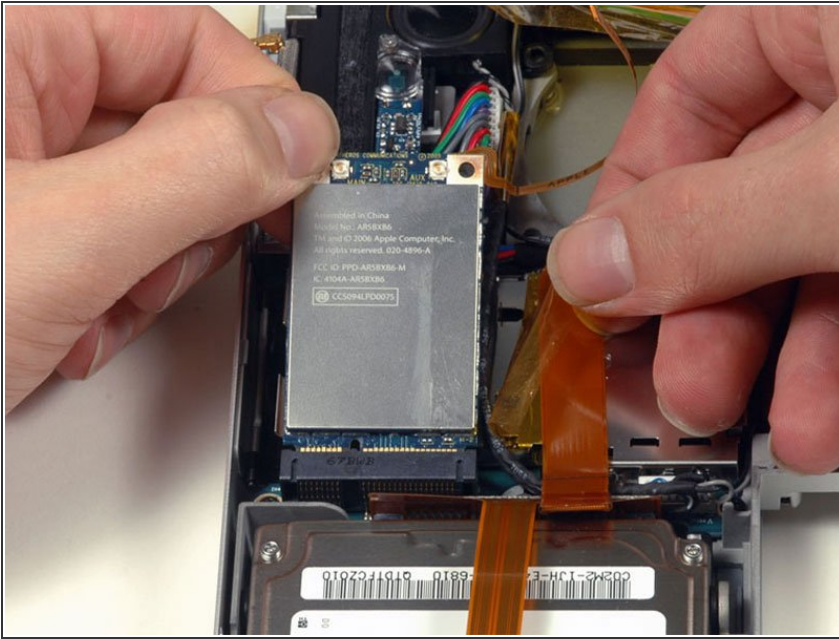
- Disconnect the two antenna cables attached to the Airport Extreme card.
- ☑ The white antenna cable connects to the left side of the Airport Extreme card.

Step 19



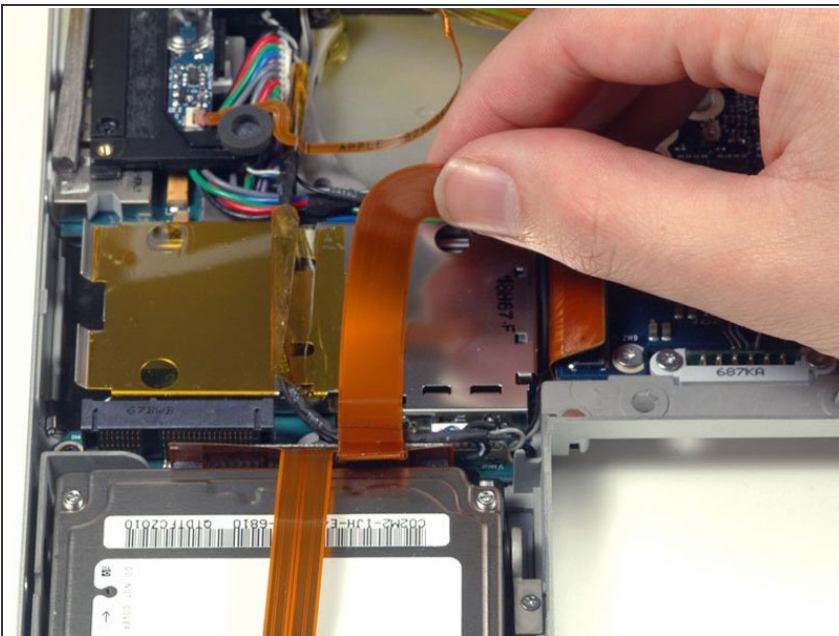
- Remove the single silver Phillips screw located just above the Airport Extreme card.
- Lift the small silver metal retaining bracket up and out of the computer.

Step 20



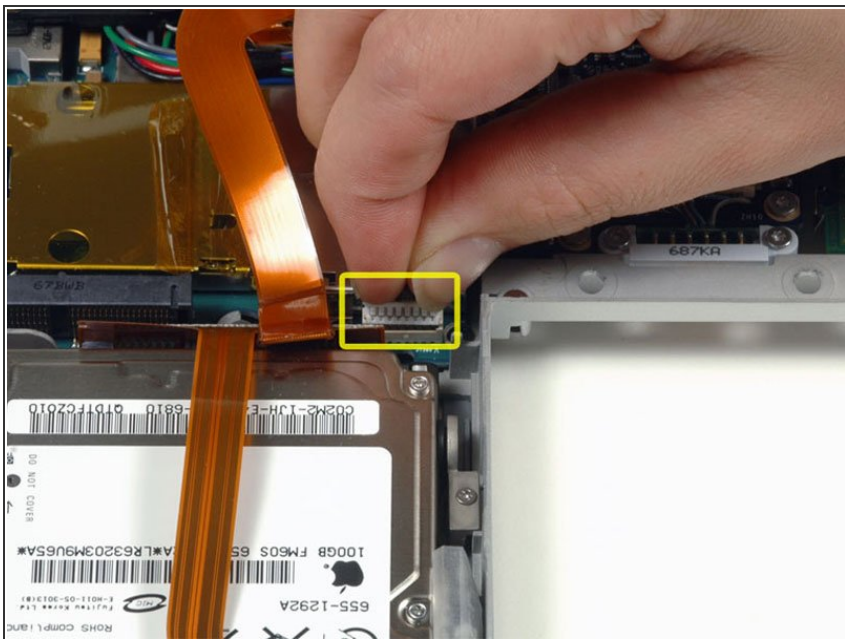
- Peel back the orange tape on the right side of the Airport Extreme card.
- Lift the Airport Extreme card up and slide it out of its connector.

Step 21



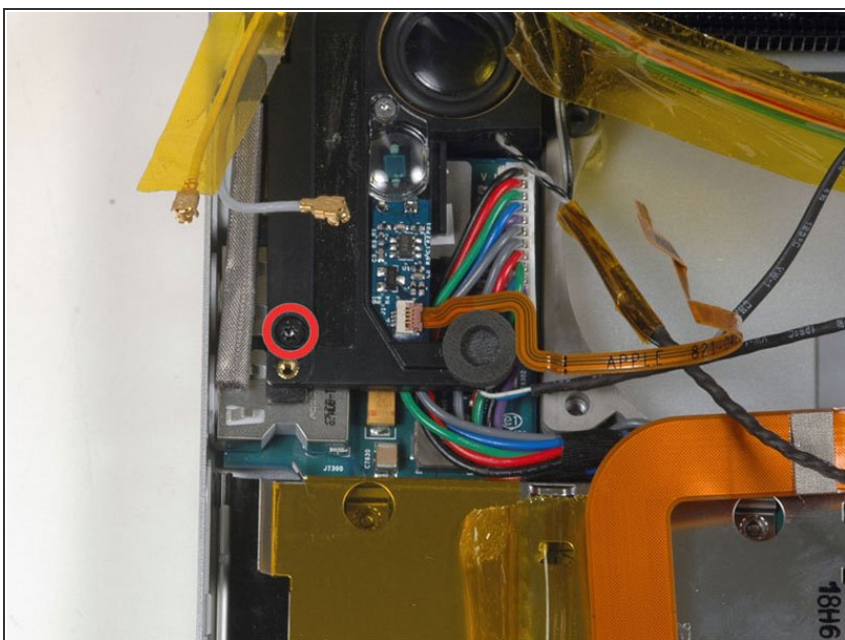
- Peel up the orange hard drive cable from above the ExpressCard cage.

Step 22



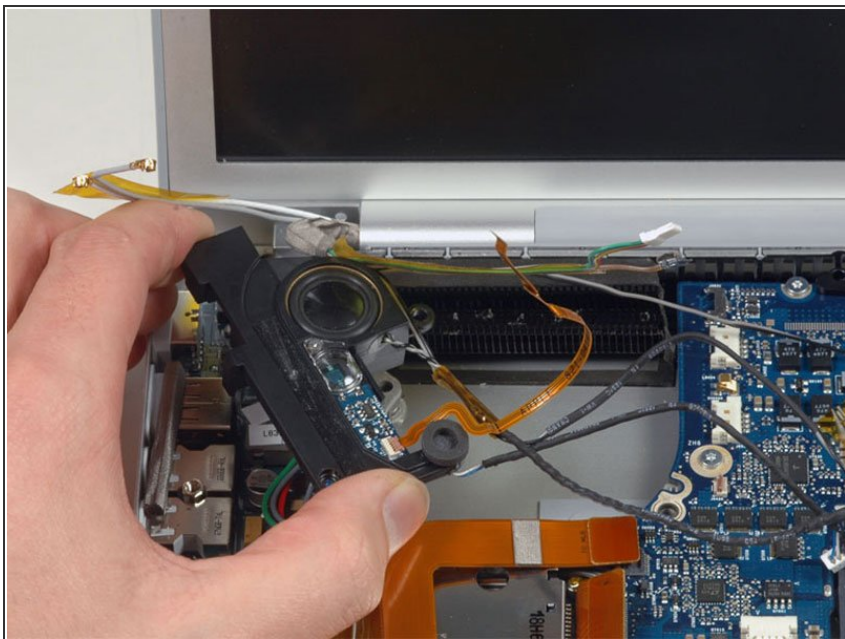
- Disconnect the speaker cable from the corner of the left I/O board.

Step 23



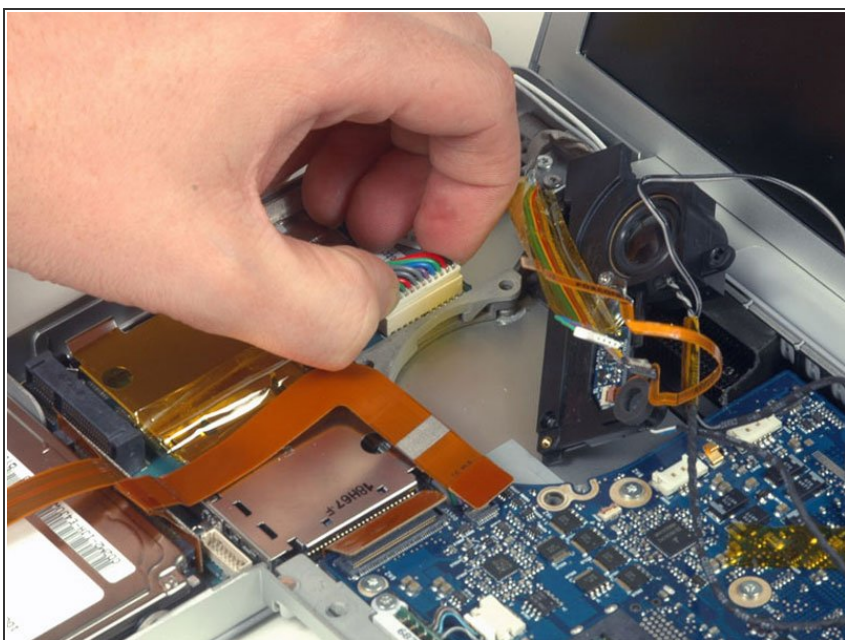
- Remove the single black T6 Torx screw securing the left speaker.

Step 24



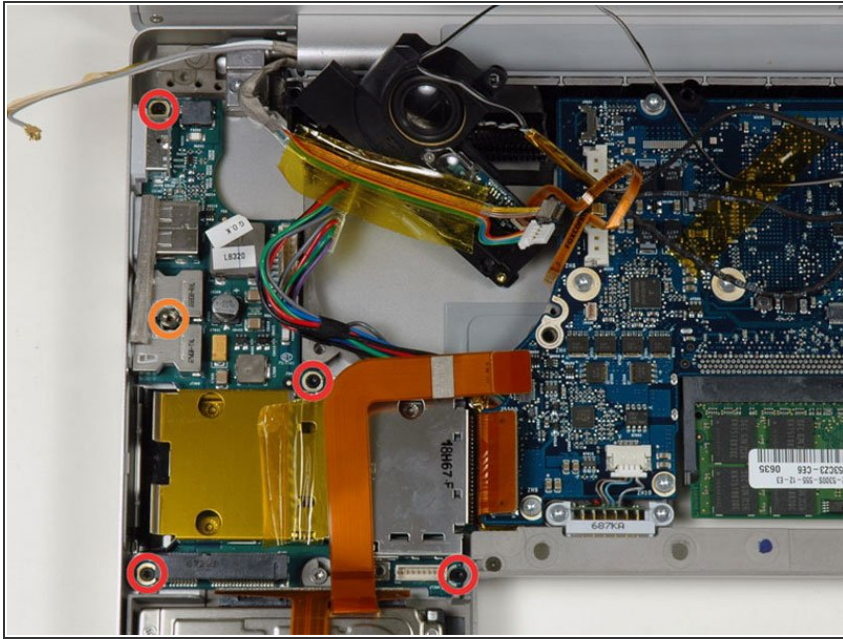
- Lift the left speaker assembly out of its housing and place it in the area previously occupied by the left fan.

Step 25



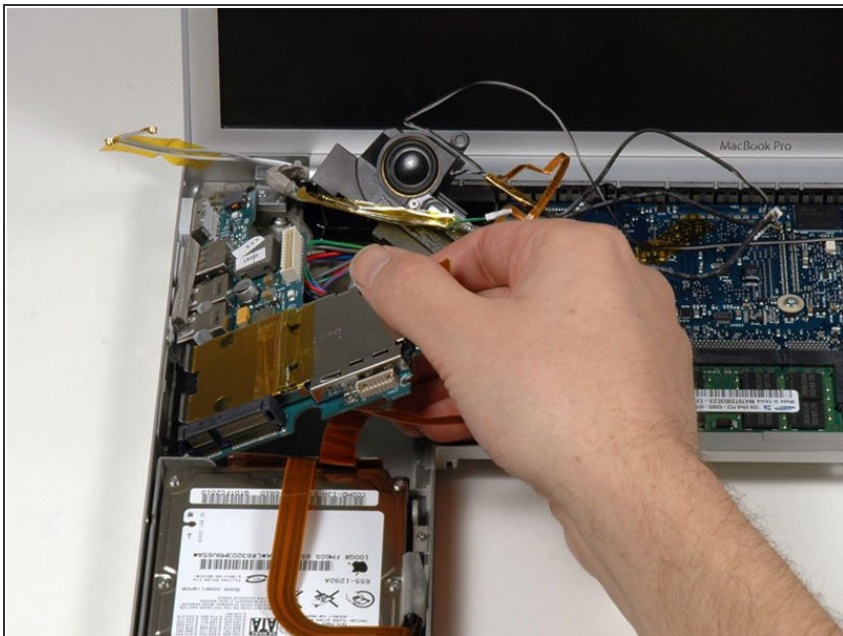
- Disconnect the large multi-colored power cable from the left I/O board.

Step 26



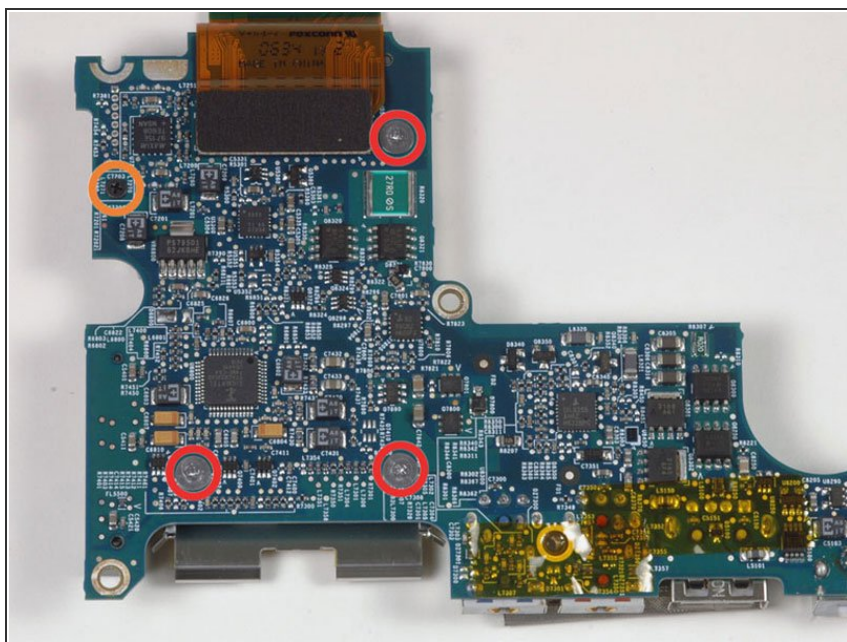
- Remove the following 5 screws/standoffs:
 - Four black T6 Torx screws securing the left I/O board to the lower case.
 - One 4 mm standoff located between the audio jacks.

Step 27



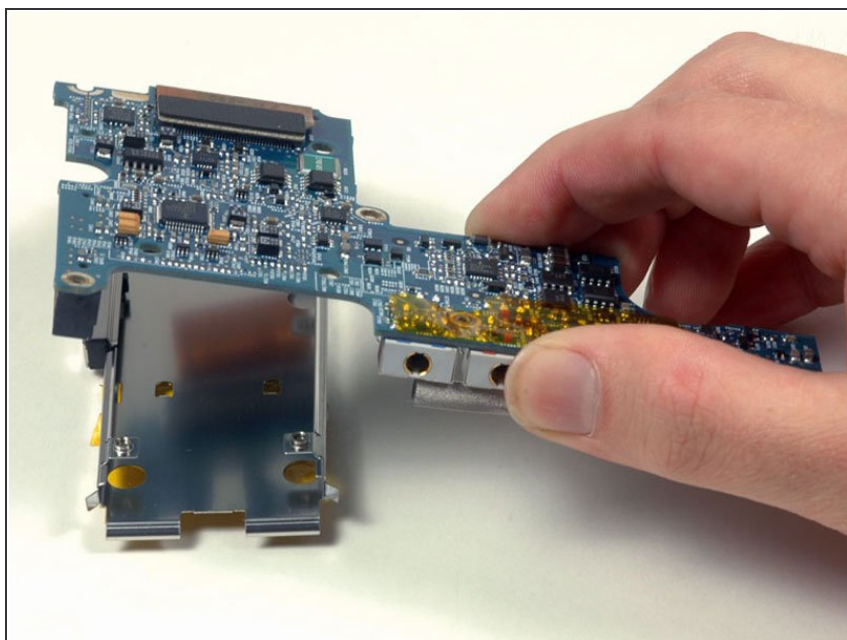
- Lift up the right side of the left I/O board and slide it out of the computer.

Step 28



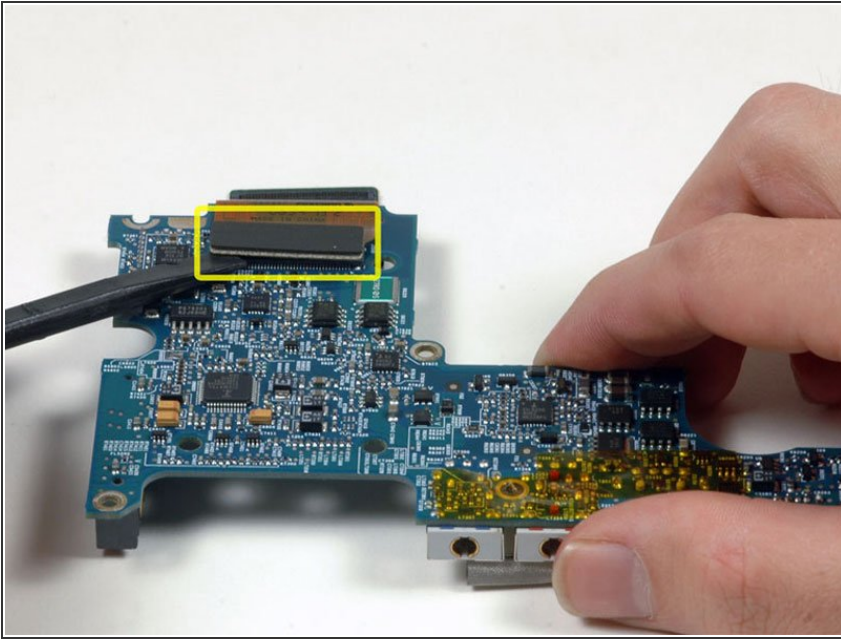
- Remove the following 4 screws:
 - Three 1.2 mm silver Phillips with large heads.
 - One 3.2 mm black Phillips on the left side.

Step 29



- Lift the left I/O board off the ExpressCard cage.

Step 30



- Disconnect the short left I/O board cable.
- Left I/O board remains.

To reassemble your device, follow these instructions in reverse order.