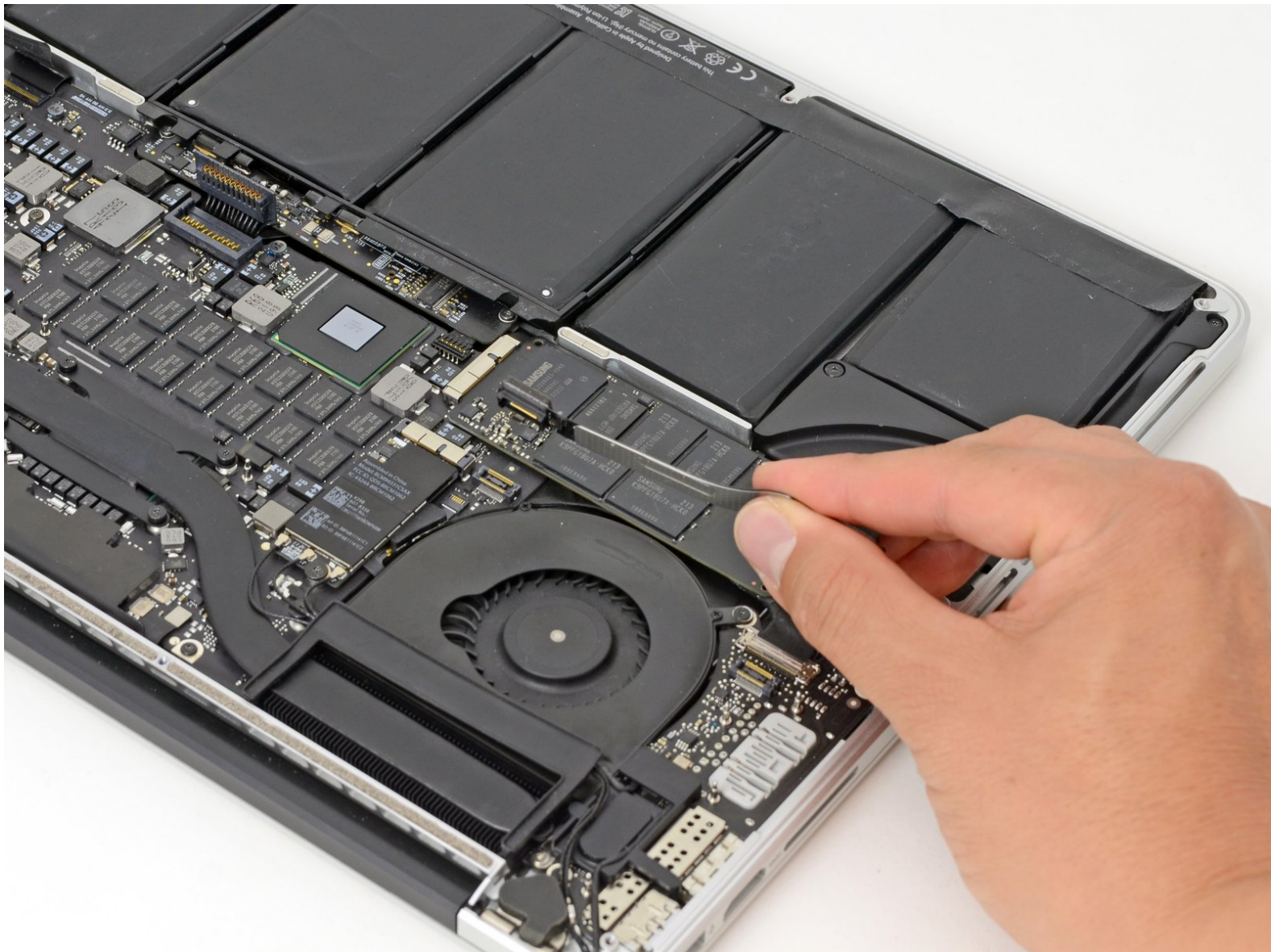




MacBook Pro 15" Retina Display Late 2013 I/O Board Cable Replacement

Replace the I/O board cable in a MacBook Pro 15" Retina Display Late 2013.

Written By: Andrew Optimus Goldheart



INTRODUCTION

Input, Output, Sideput. Whatever kind of putting you will be doing, a faulty I/O board cable is going to severely limit the functionality of your MacBook Pro with Retina display. This guide will show you how to replace it.



TOOLS:

- [MacBook Pro and Air 5-Point Pentalobe Screwdriver](#) (1)
- [Spudger](#) (1)



PARTS:

- [MacBook Pro 15" Retina \(Late 2013/Mid 2014\) I/O Board Cable](#) (1)

Step 1 — Lower Case



- Remove the following P5 pentalobe screws securing the lower case to the MacBook Pro:
 - Eight 3.0 mm
 - Two 2.3 mm

Step 2



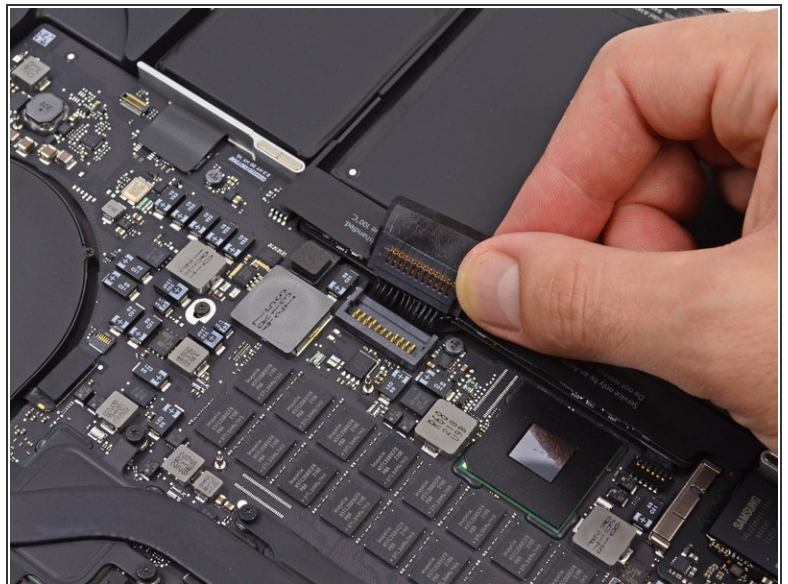
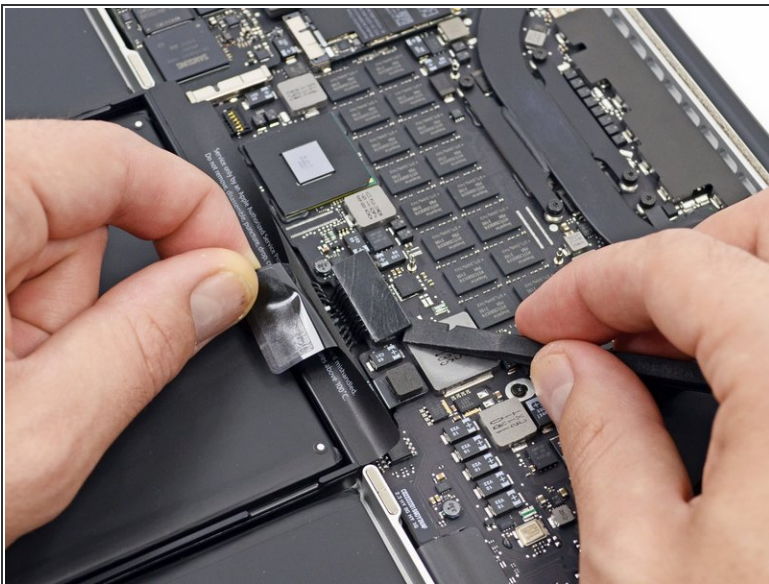
- Lifting from the edge nearest the clutch cover, lift the lower case off the MacBook Pro.
- Set the lower case aside.

Step 3 — Battery Connector



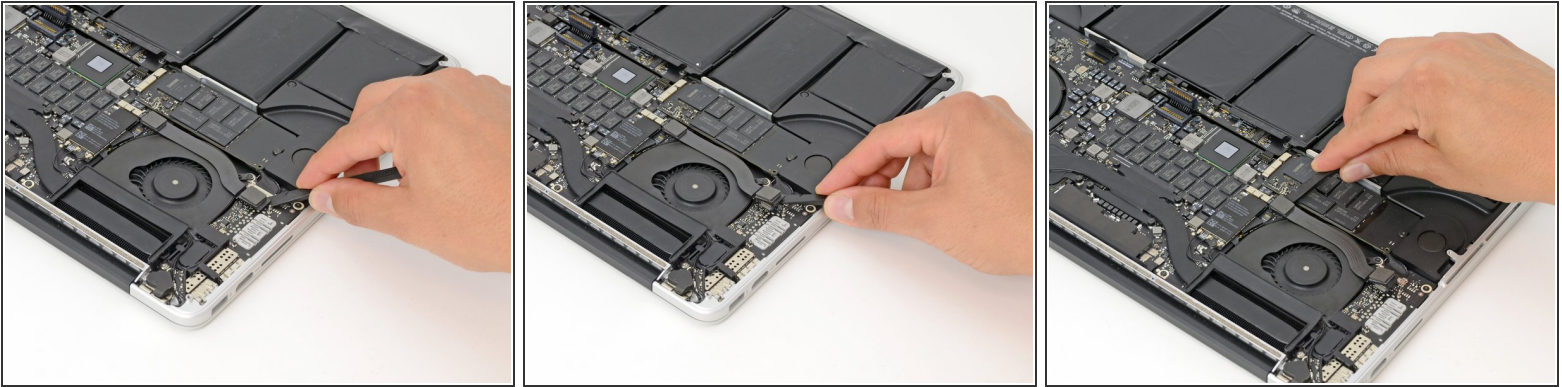
- Peel back the warning label covering the battery connector.

Step 4



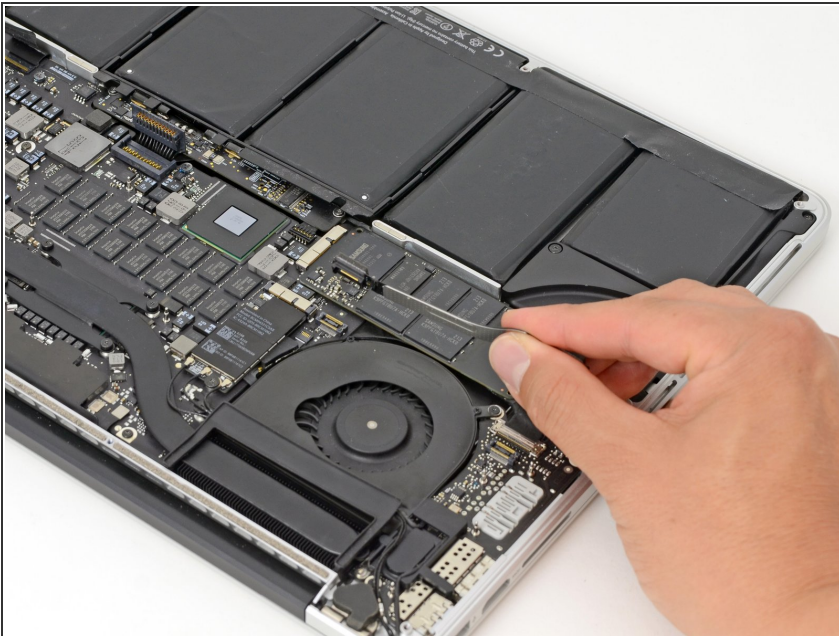
- Using the flat end of a spudger, gently pry the battery connector straight up out of its socket on the logic board.
- Bend the battery cables back and out of the way, ensuring that the battery connector doesn't accidentally make contact with the logic board.

Step 5 — I/O Board Cable



- Using the flat end of a spudger, pry the I/O board cable straight up out of its socket on the I/O board.
- In a similar fashion, remove the I/O board cable from its socket on the I/O board.

Step 6



- Remove the I/O board cable from the MacBook Pro.

To reassemble your device, follow these instructions in reverse order.