



MacBook Pro 15" Retina Display Late 2013

Upper Case Assembly Replacement

Replace the Upper Case in your MacBook Pro 15" Retina Display Late 2013.

Written By: Andrew Optimus Goldheart



INTRODUCTION

The battery, keyboard, trackpad, and upper case are all stuck together. If you break one of these components, you will need to replace the entire assembly. Follow this guide to do so.



TOOLS:

- [MacBook Pro and Air 5-Point Pentalobe Screwdriver](#) (1)
- [iFixit Opening Tools](#) (1)
- [Spudger](#) (1)
- [T5 Torx Screwdriver](#) (1)
- [T8 Torx Screwdriver](#) (1)



PARTS:

- [MacBook Pro 15" Retina \(Late 2013\) Upper Case Assembly](#) (1)

Step 1 — Lower Case



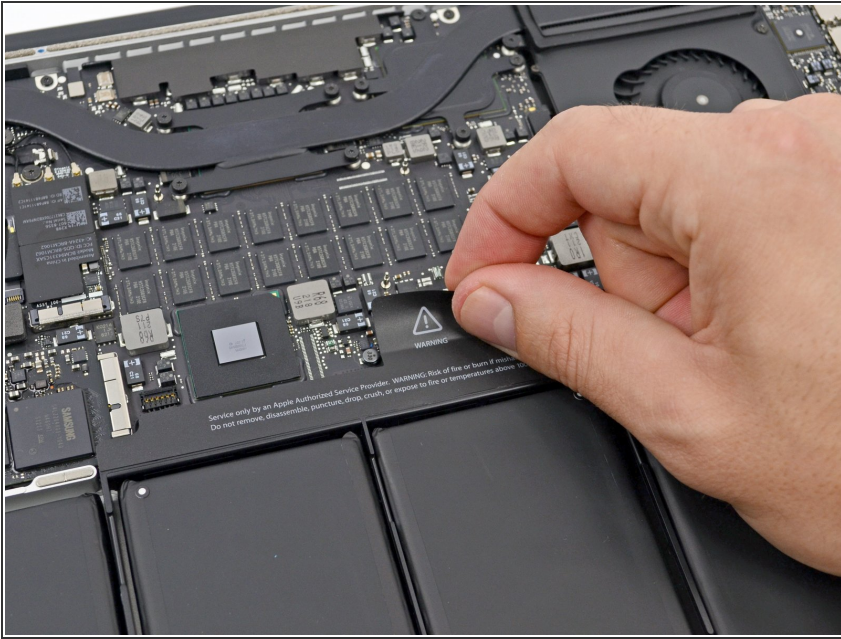
- Remove the following P5 pentalobe screws securing the lower case to the MacBook Pro:
 - Eight 3.0 mm
 - Two 2.3 mm

Step 2



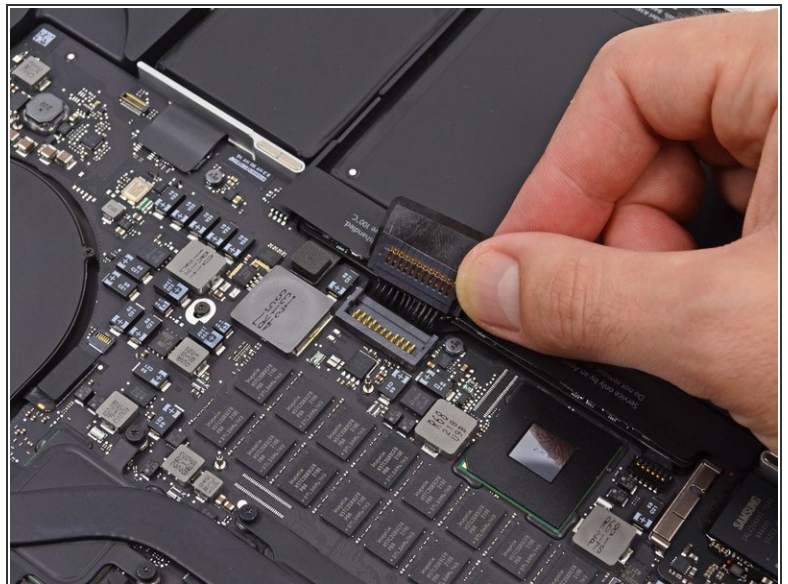
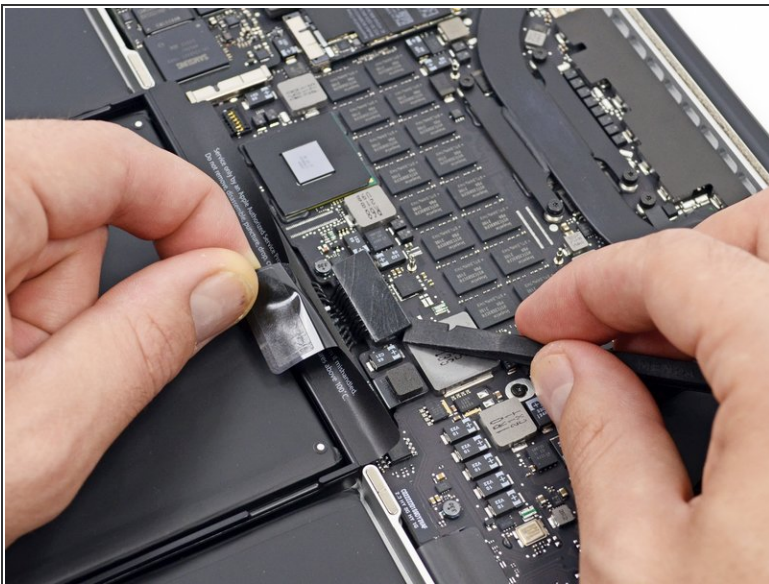
- Lifting from the edge nearest the clutch cover, lift the lower case off the MacBook Pro.
- Set the lower case aside.

Step 3 — Battery Connector



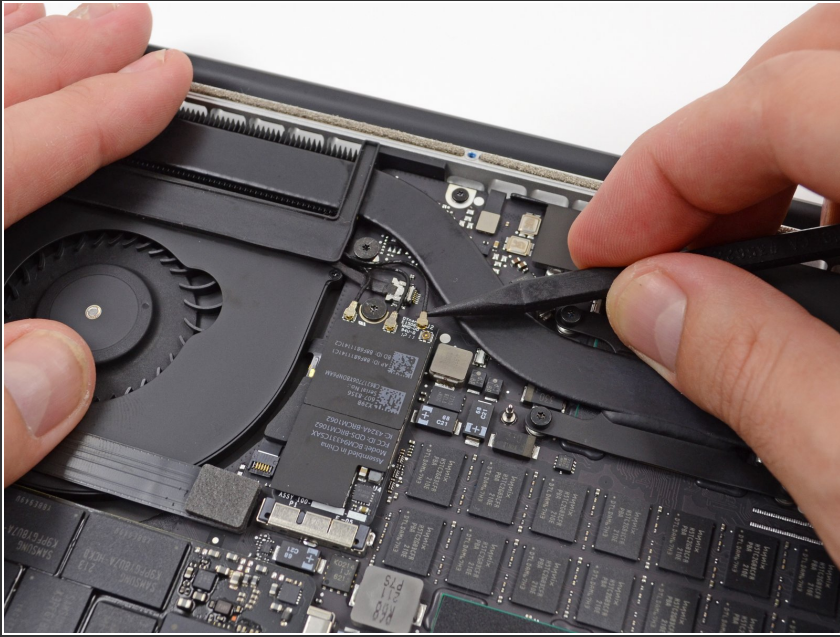
- Peel back the warning label covering the battery connector.

Step 4



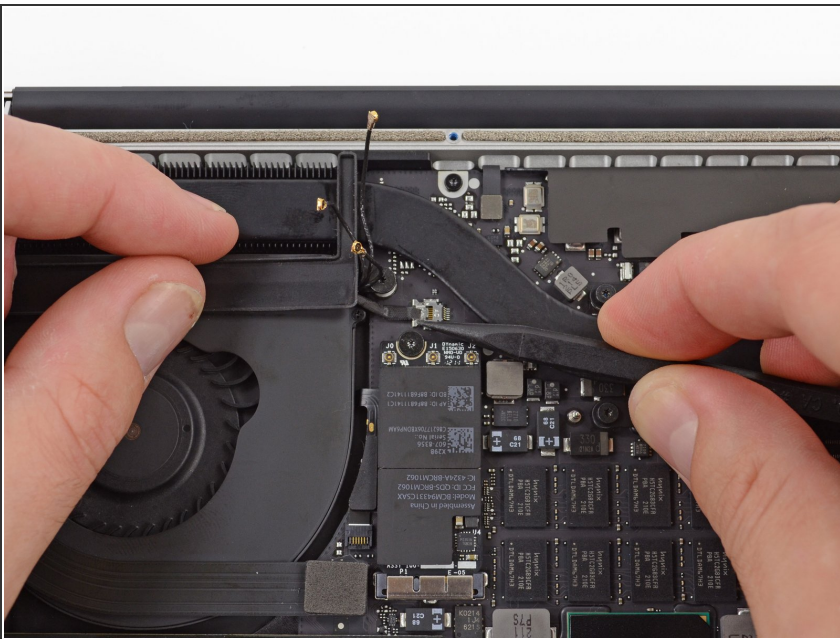
- Using the flat end of a spudger, gently pry the battery connector straight up out of its socket on the logic board.
- Bend the battery cables back and out of the way, ensuring that the battery connector doesn't accidentally make contact with the logic board.

Step 5 — AirPort/Camera Cable



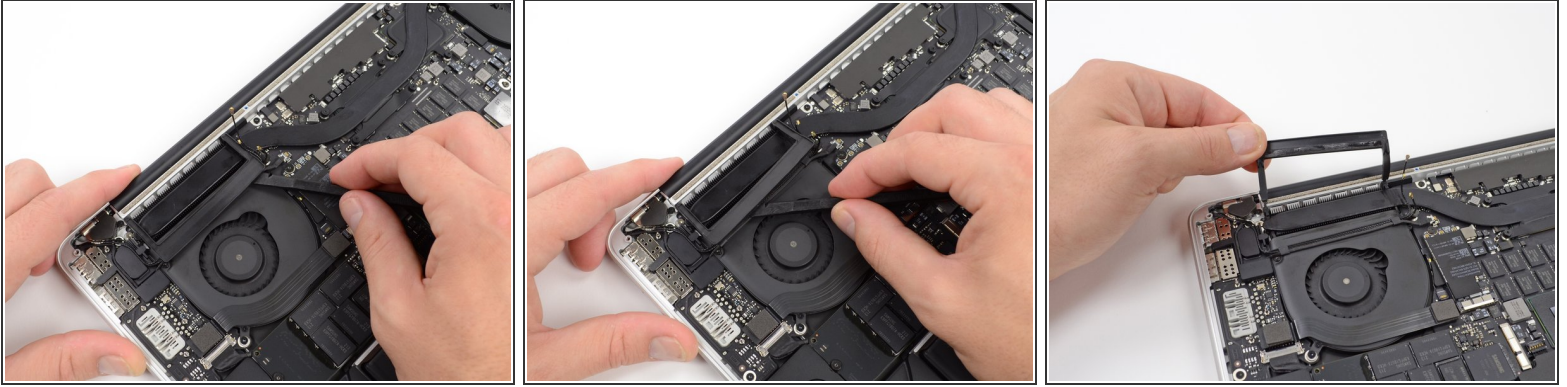
- Use a spudger or tweezers to pry the three AirPort antenna cables straight up off of their sockets on the AirPort board.
- ⚠ The cable connection points are fragile. Be careful to lift only on the connector, and not on the socket or cable.
- 🔧 To reconnect, align the connector carefully into position over the socket, and press it down firmly with the flat of your spudger.

Step 6



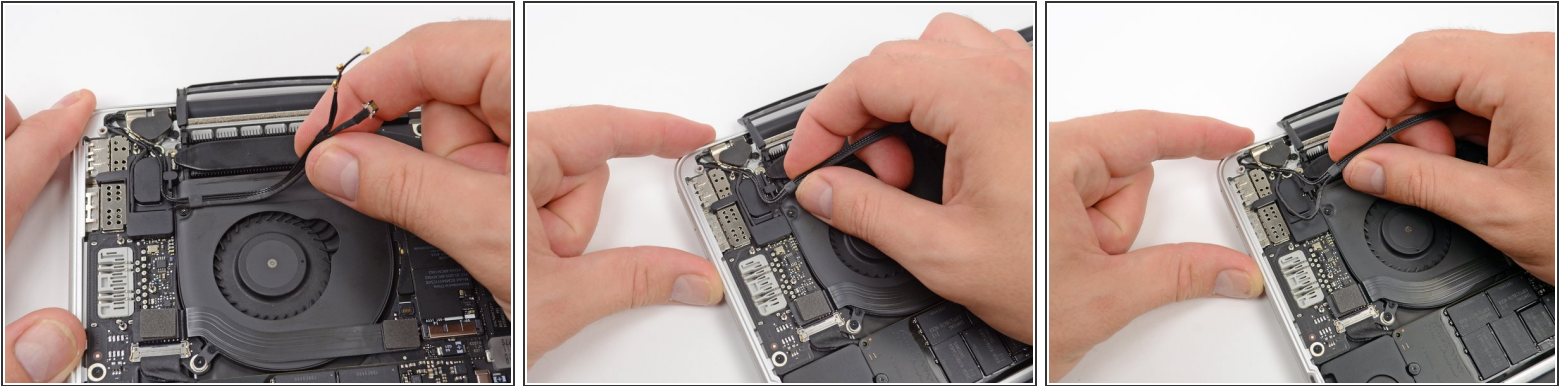
- Use the tip of a spudger to push the camera cable connector toward the fan and out of its socket on the logic board.
- ⚠ Be sure to push parallel to the board, first on one side, then the other, to slowly "walk" the connector out of its socket. Do not pry up, or you will damage the socket.

Step 7



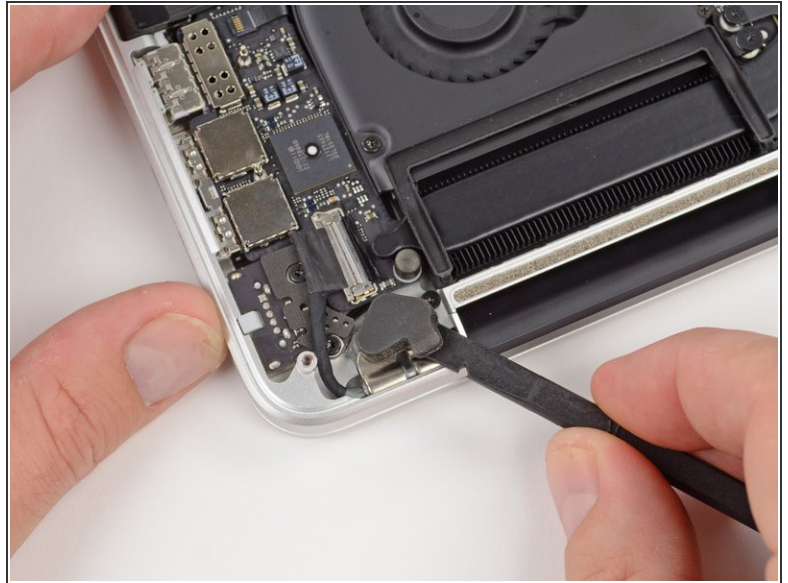
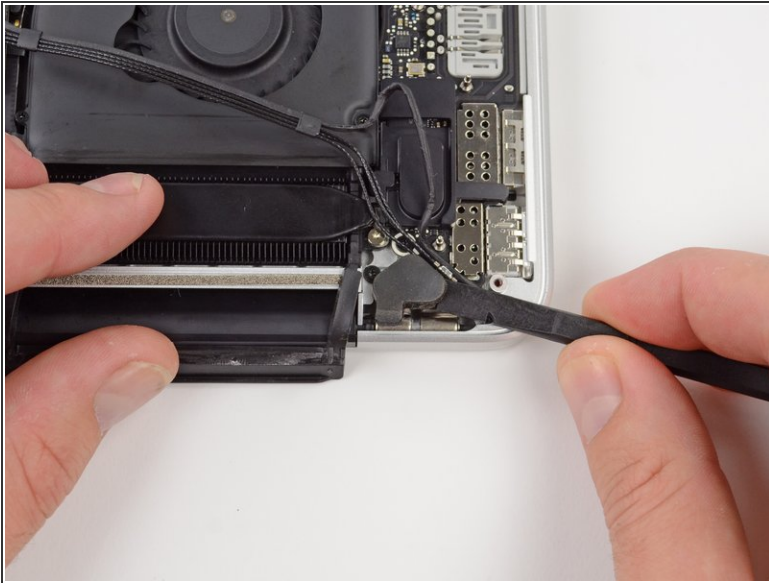
- Insert the flat end of a spudger underneath the rubber heat sink cover on the right fan.
- Slide the spudger underneath the length of the cover, releasing the adhesive.
- Lift the cover and flip it back so that you can access the cables underneath.

Step 8



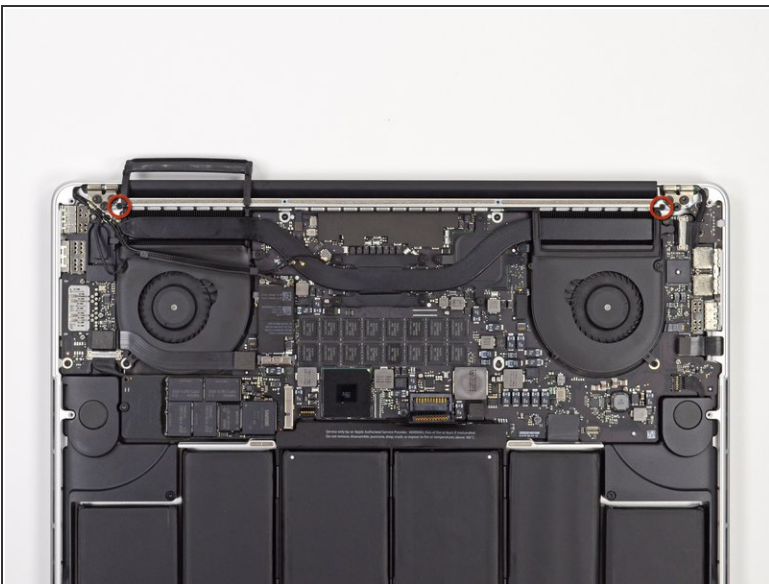
- Use your fingers to pull the AirPort/Camera cables up off the fan.
 - ⓘ The cables are adhered to the fan, so peel them up carefully to avoid damaging them.
- Carefully de-route the cables from the plastic cable guide.

Step 9 — Rubber Hinge Covers



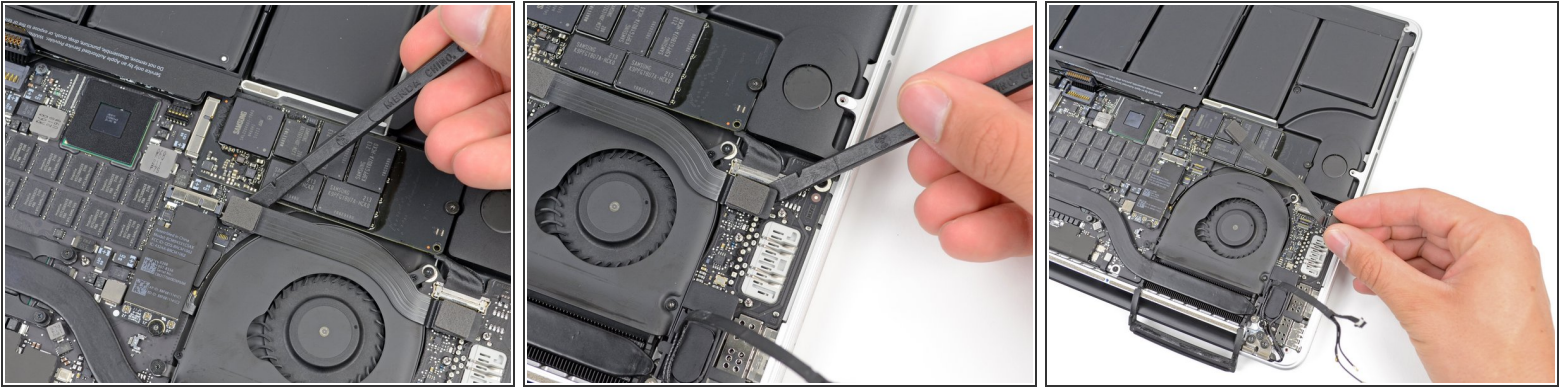
- Use the flat end of a spudger to pry the rubber hinge covers up off the left and right hinges.

Step 10 — Display Assembly Screws



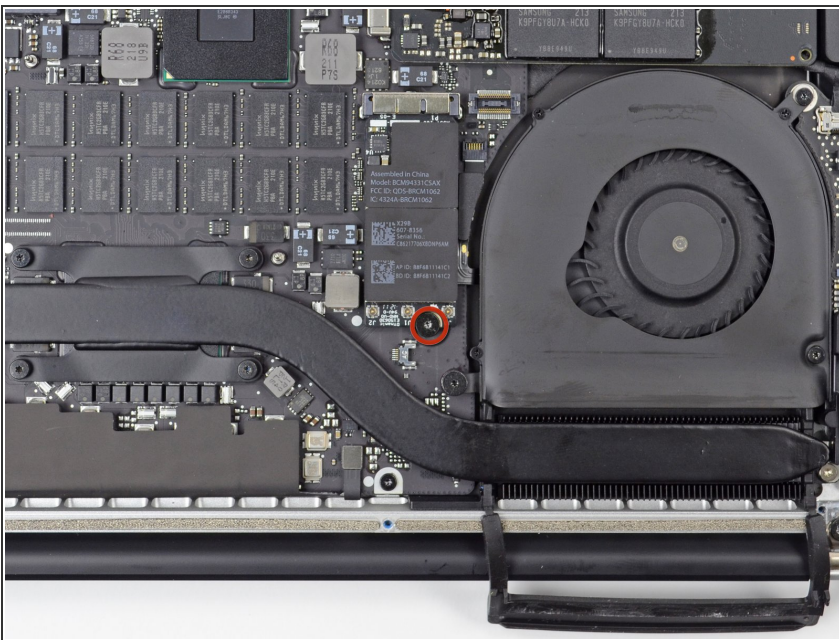
- Remove the two 3.1 mm T5 Torx screws securing the aluminum hinge covers to the upper case.
- Remove the two aluminum hinge brackets from the MacBook Pro.

Step 11 — I/O Board Cable



- Using the flat end of a spudger, pry the I/O Board connector straight up out of its socket on the logic board. On reassembly, connect this end first as it does not flex.
- In a similar fashion, remove the I/O Board connector from its socket on the I/O Board.
- Remove the I/O Board cable from the MacBook Pro.

Step 12 — Right Fan



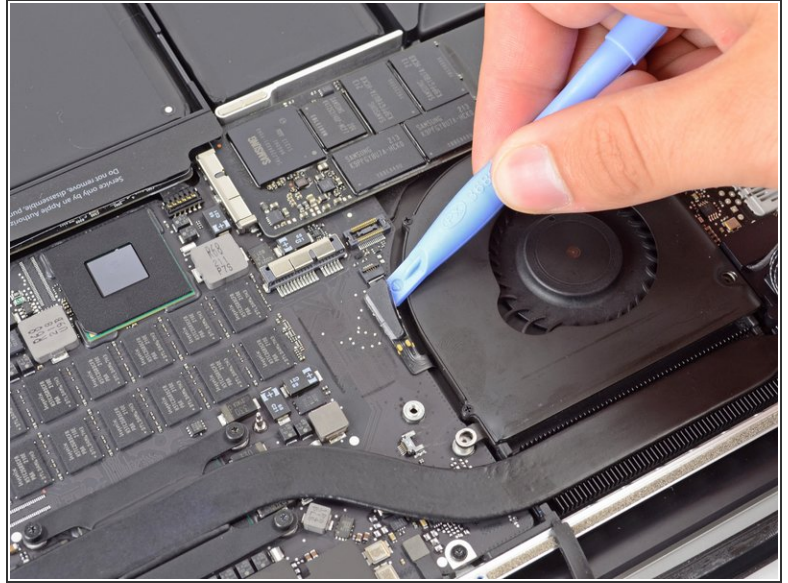
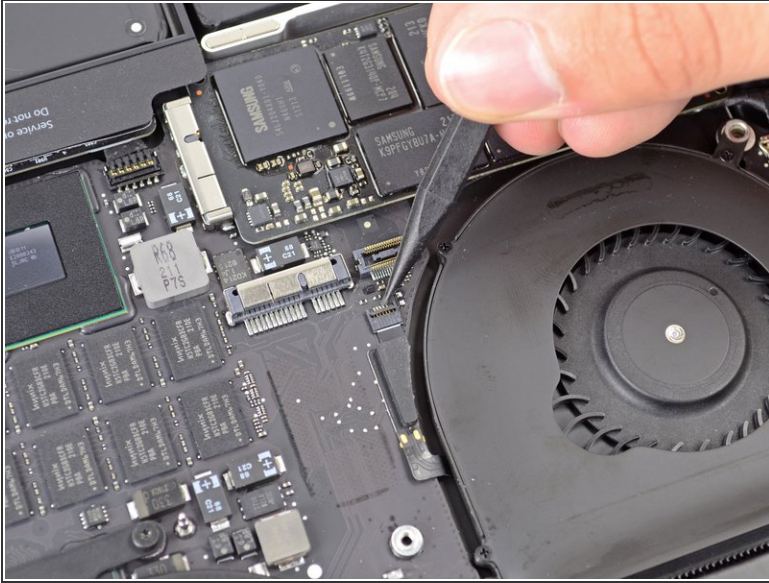
- Remove the single 2.9 mm T5 (sometimes T6) Torx screw securing the AirPort card to the logic board.

Step 13



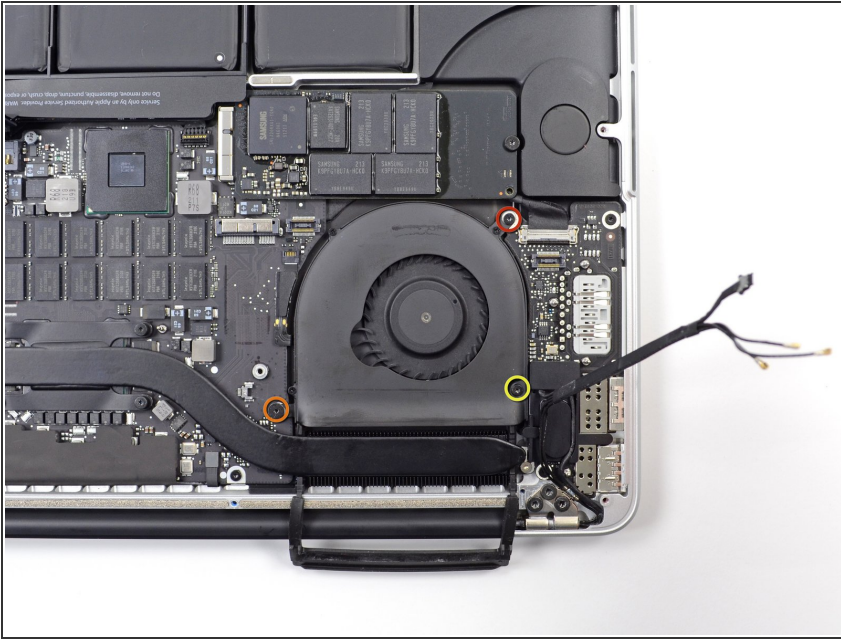
- Grasp the thin sides of the AirPort card and pull parallel to the logic board, removing the AirPort card from the MacBook Pro.

Step 14



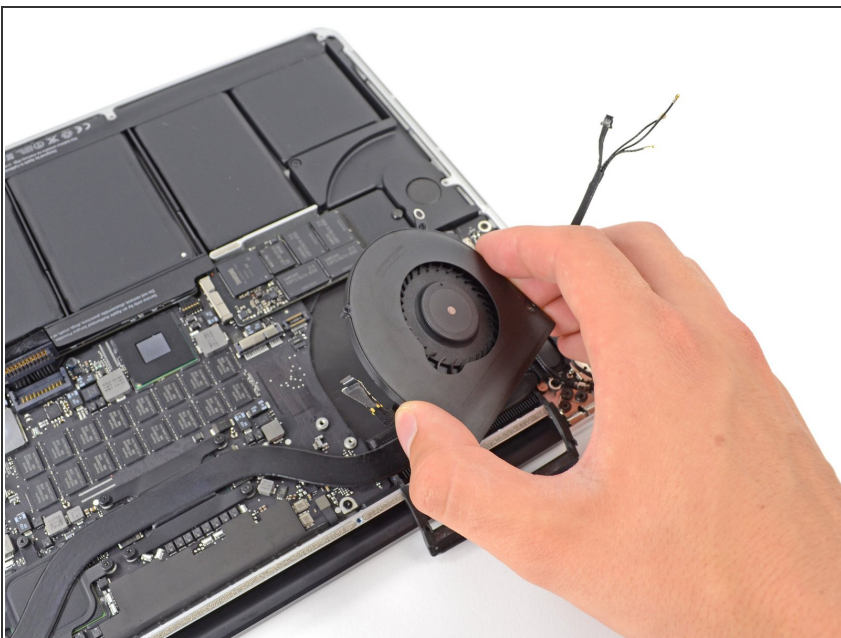
- Use the tip of a spudger to flip up the retaining flap on the right fan ribbon cable [ZIF](#) socket.
- ⚠ Be sure you are prying up on the hinged retaining flap, **not** the socket itself.
- Starting at the top of the cable, slide a plastic opening tool under the right fan cable to free it from the logic board.
- ⚠ Use caution when freeing the cable, as it is strongly adhered to the logic board.

Step 15



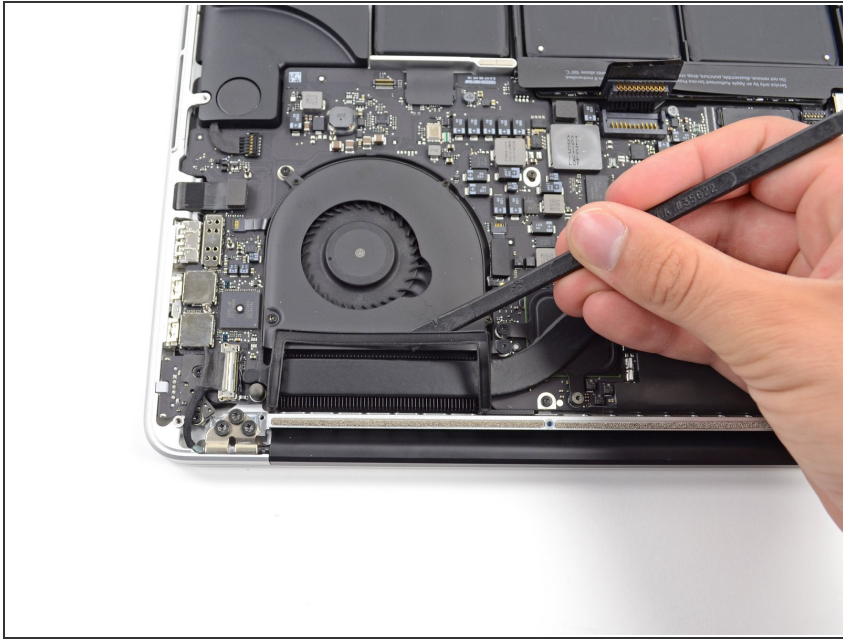
- Remove the following three screws securing the right fan to the logic board:
 - One 4.4 mm T5 Torx screw
 - One 3.9 mm T5 Wide Head Torx screw
 - One 5.0 mm T5 Torx screw with 2 mm collar

Step 16



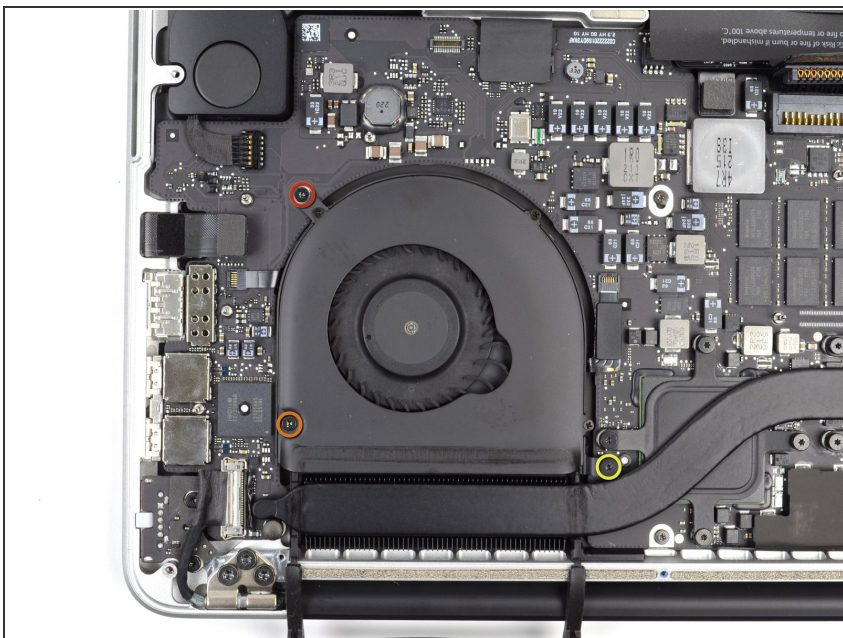
- Lift and remove the right fan out from the MacBook Pro.
- ★ When reinstalling the fan, it's easiest connect the fan ribbon cable as you drop the fan in place, rather than after you've installed the three fan screws.

Step 17 — Left Fan



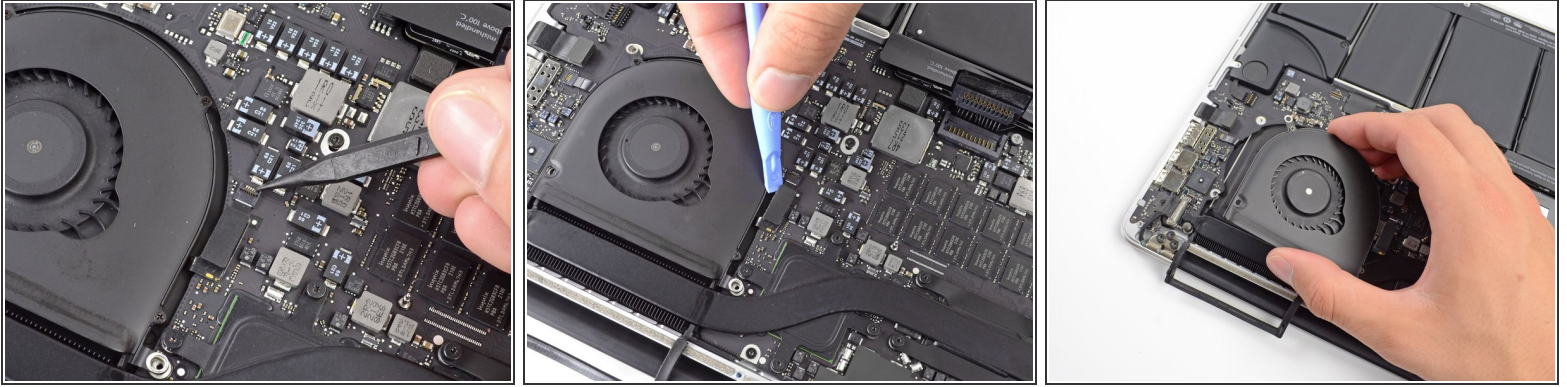
- Use the flat end of a spudger to lift the rubber heat sink cover up off the left fan.

Step 18



- Remove the following three screws securing the left fan to the logic board:
 - One 4.4 mm T5 Torx screw
 - One 5.0 mm T5 Torx screw with 2 mm collar.
 - One 3.9 mm T5 Wide Head Torx screw

Step 19



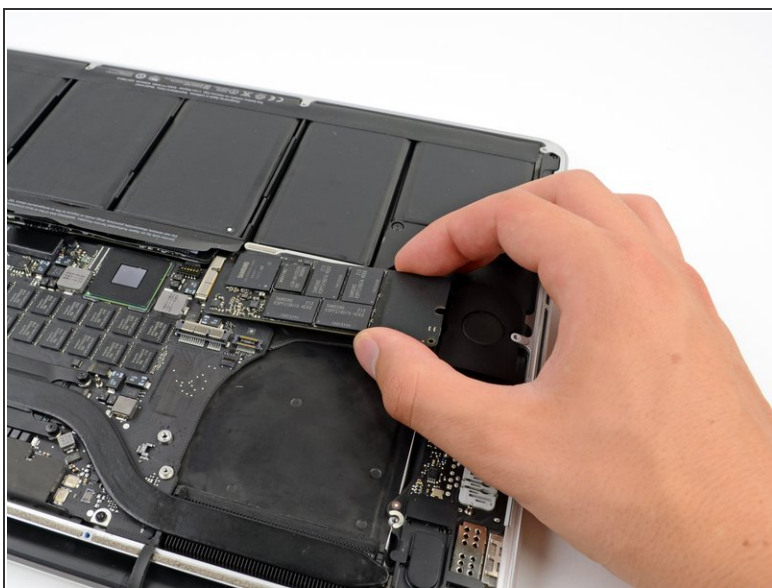
- Use the tip of a spudger to flip up the retaining flap on the left fan ribbon cable ZIF socket.
- ⚠ Be sure you are prying up on the hinged retaining flap, **not** the socket itself.
- Starting at the top of the cable, slide a plastic opening tool under the left fan cable to free it from the logic board.
- ⚠ Use caution when freeing the cable, as it is strongly adhered to the logic board. If necessary, use an iOpener or hair dryer to heat the cable in order to soften the adhesive and make it easier to remove.
- Lift the left fan out of the device.
- ☞ When reinstalling the fan, it's easiest connect the fan ribbon cable as you drop the fan in place, rather than after you've installed the three fan screws.

Step 20 — SSD



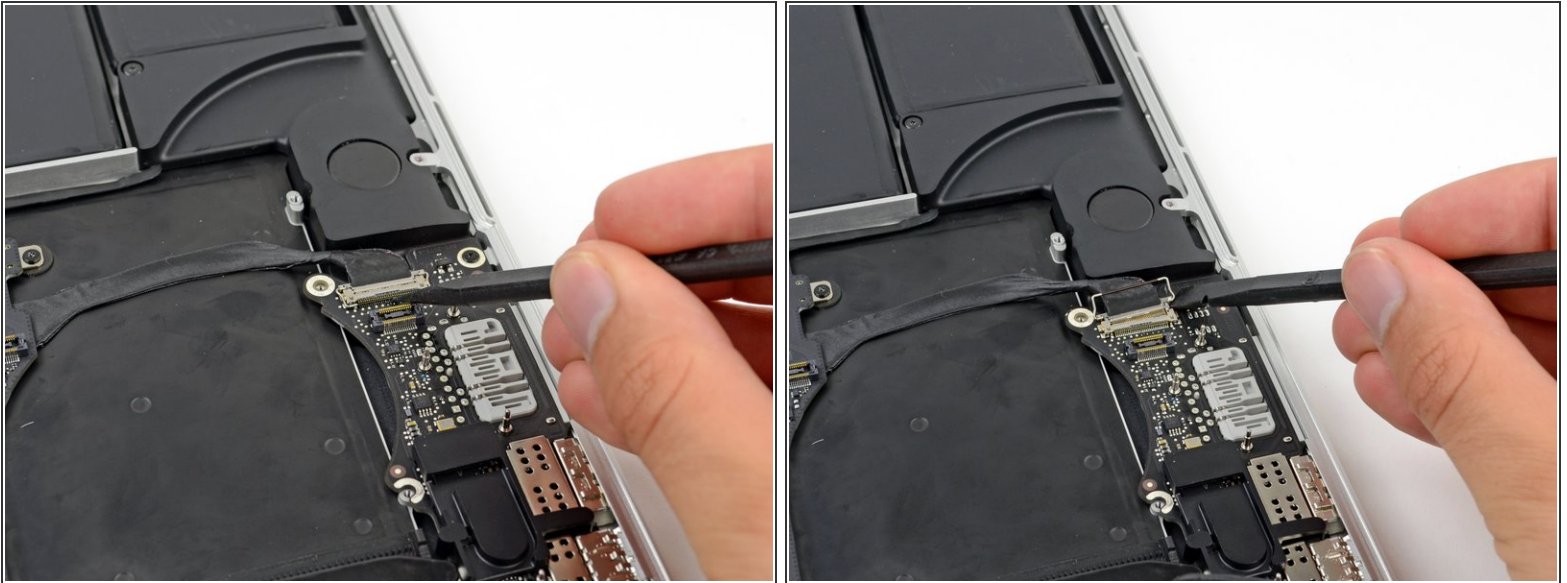
- Remove the single 3.1 mm T5 Torx screw securing the SSD to the logic board.


Step 21



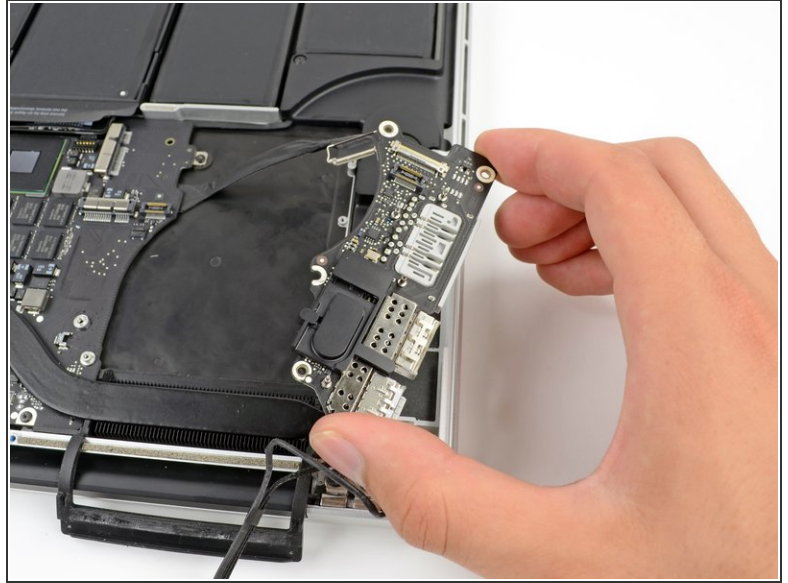
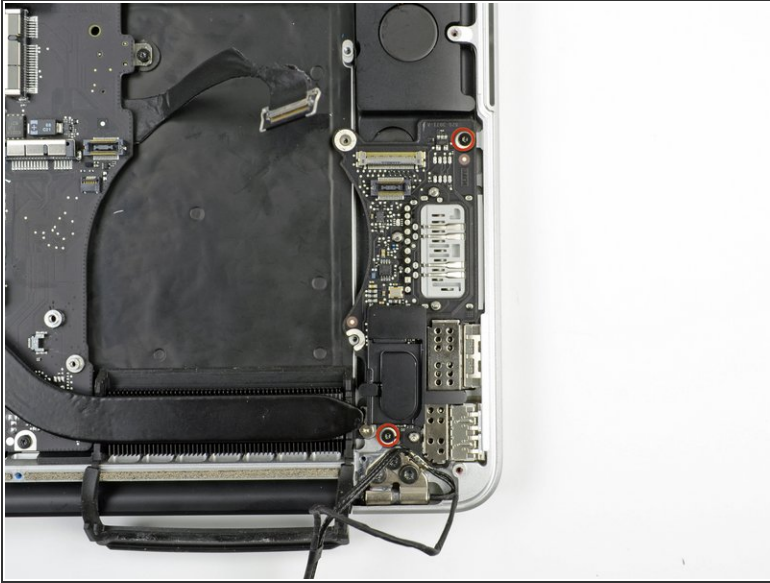
- Slightly lift the rightmost side of the SSD and firmly slide it straight away out of its socket on the logic board.

Step 22 — I/O Board



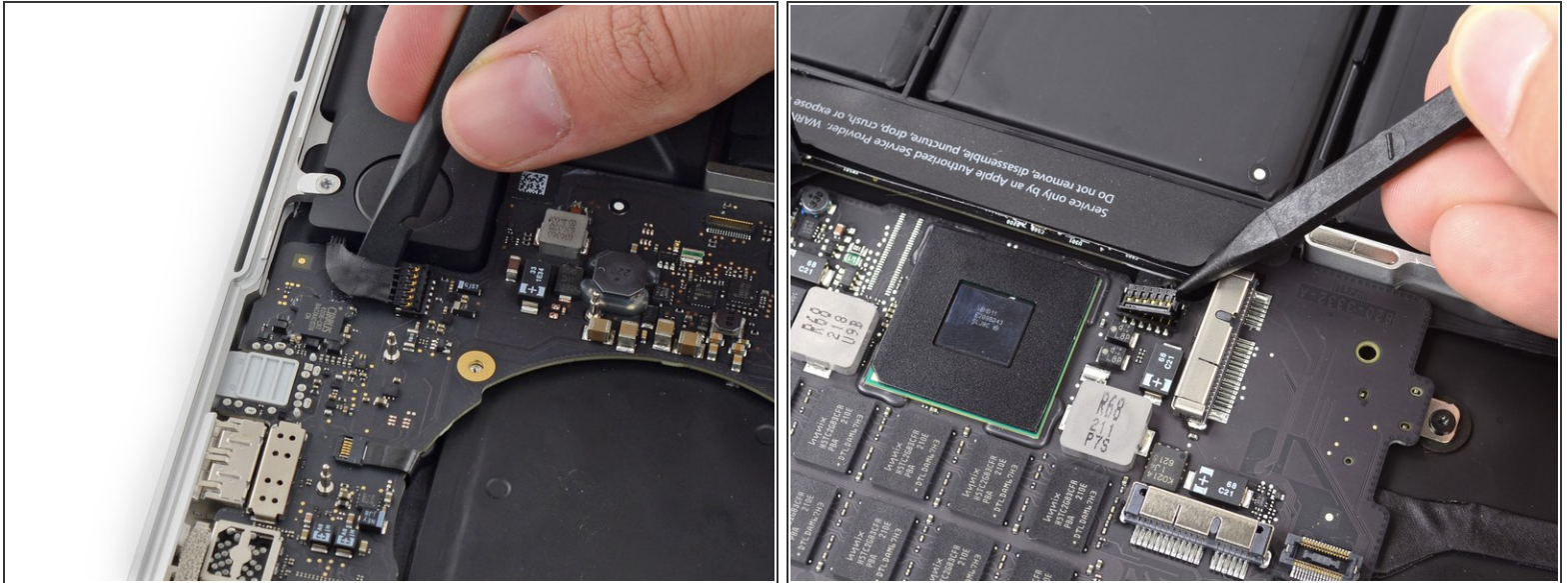
- Use the tip of a spudger to flip up the I/O board data cable lock and rotate it toward the battery side of the computer.
 - Use the flat end of a spudger to slide the I/O board data cable straight out of its socket on the logic board.
-  Do not lift up on the I/O board data cable, as its socket is very fragile. Pull the cable parallel to the face of the logic board.

Step 23



- Remove the two 3.1 mm T5 Torx screws securing the I/O board to the logic board.
- Carefully lift the I/O board and remove it from the lower case.


Step 24 — Logic Board Assembly



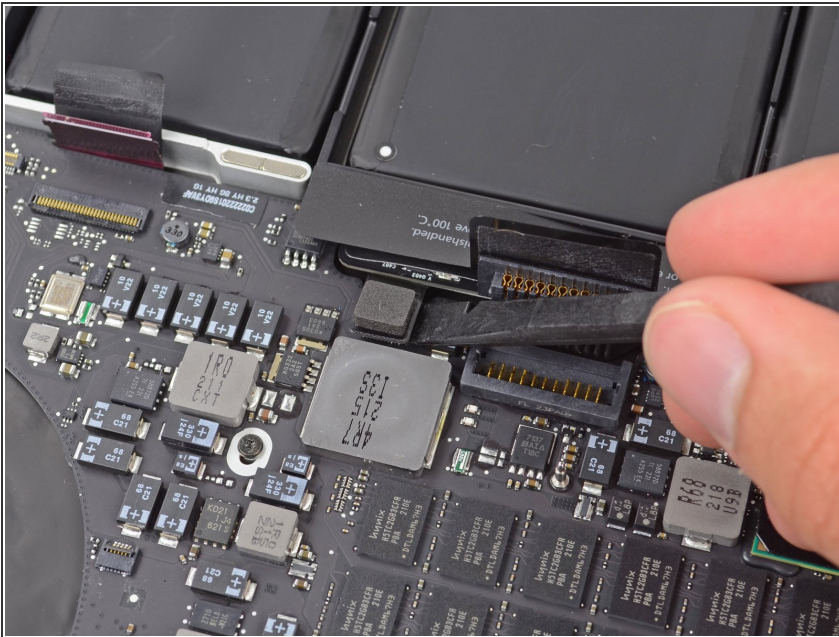
- Use the flat end of a spudger to pry the left speaker connector up and out of its socket on the logic board.
 - Use the tip of a spudger to pry the right speaker connector up and out of its socket on the logic board
- ⚠ Be sure to pry on the cable head, and not on the socket itself. Prying on the socket may cause it to separate from the logic board.

Step 25



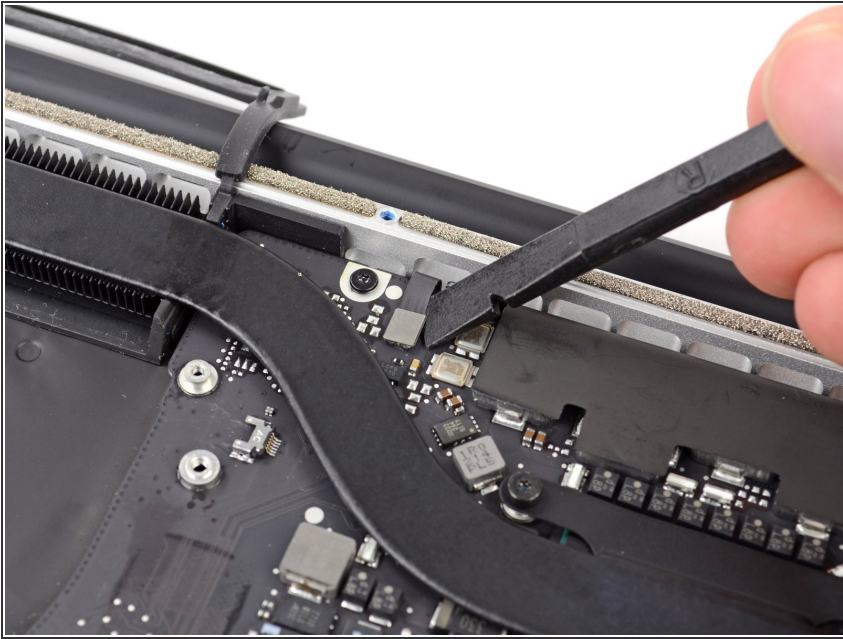
- Peel back the tape covering the top of the keyboard ribbon cable connector.
- Use the flat end of a spudger to flip up the retaining flap on the keyboard ribbon cable ZIF socket.
 Be sure you are prying up on the hinged retaining flap, **not** the socket itself.
- Use the flat end of a spudger to push the keyboard ribbon cable out of its socket.

Step 26



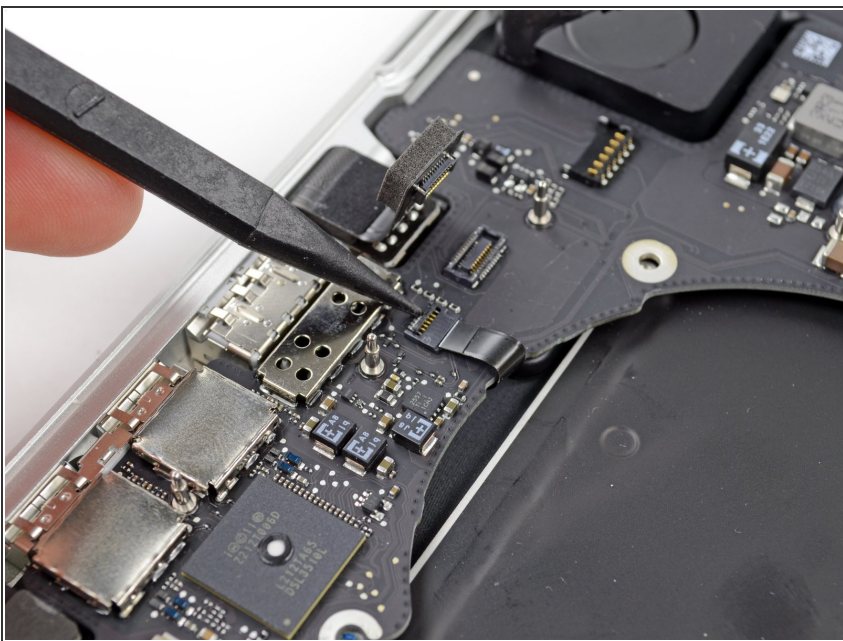
- Use the flat end of a spudger to pry the trackpad ribbon cable connector up out of its socket.

Step 27



- Use the flat end of a spudger to pry the keyboard backlight connector up from its socket on the logic board.

Step 28



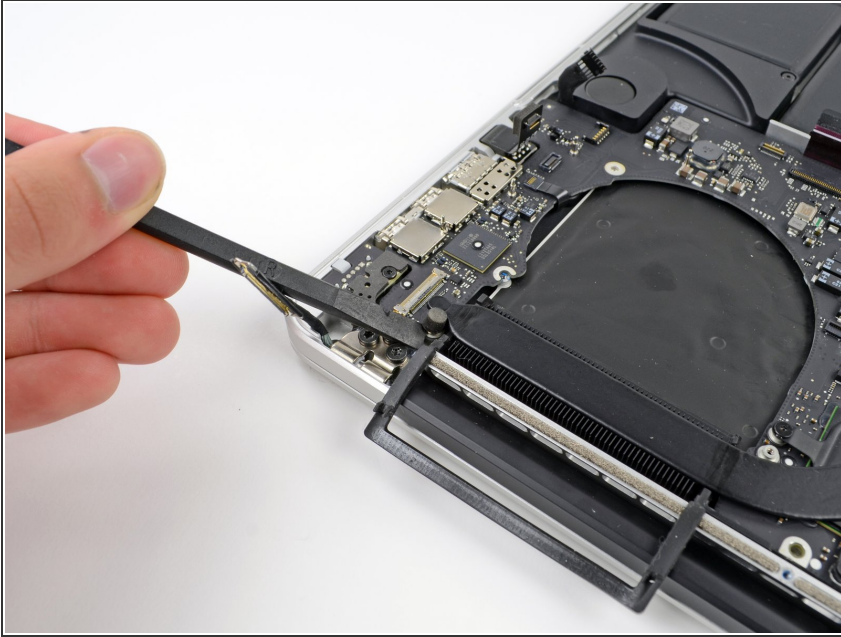
- Use the tip of a spudger or your fingernail to flip up the retaining flap on the microphone ribbon cable ZIF socket.
- ⚠ Be sure you are prying up on the hinged retaining flap, **not** the socket itself.
- Pull the microphone ribbon cable out of its socket.

Step 29



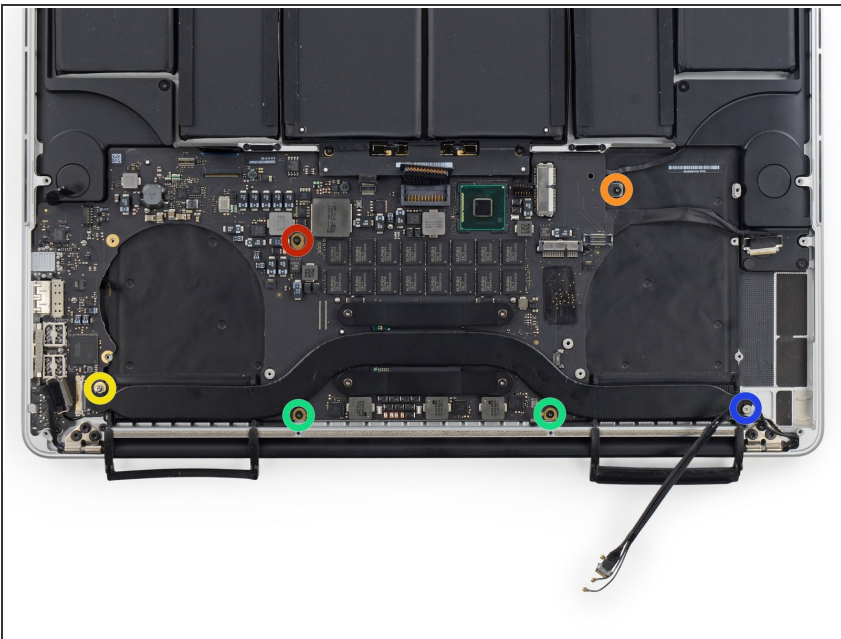
- Use the tip of a spudger to flip up the display data cable lock and rotate it toward the DC-In side of the computer.
 - Pull the display data cable straight out of its socket on the logic board.
- ⚠ Do not lift up on the display data cable, as its socket is very fragile. Pull the cable parallel to the face of the logic board.

Step 30



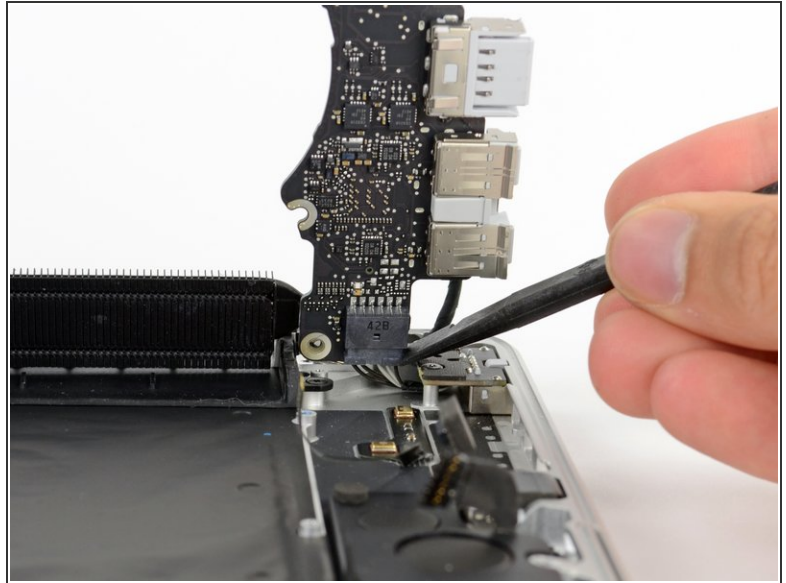
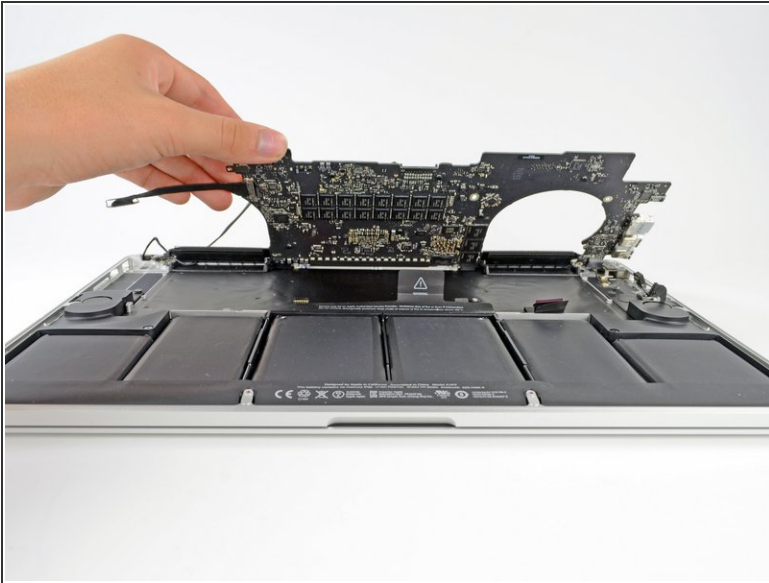
- Use the flat end of a spudger to carefully pry off the rubber screw cap on the raised screw head near the MagSafe 2 connector.

Step 31



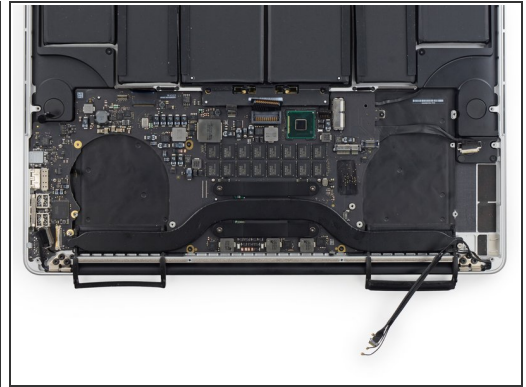
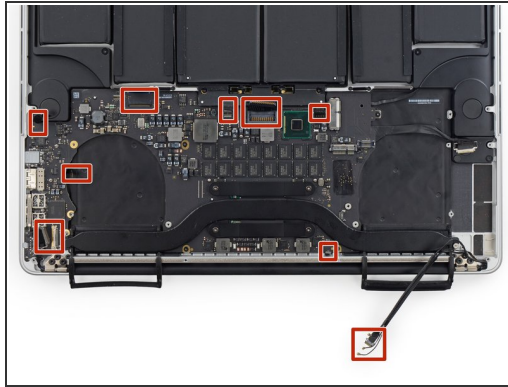
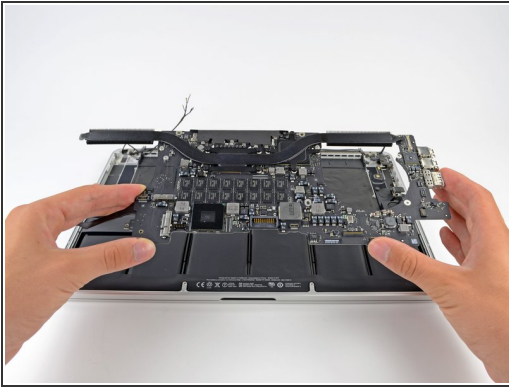
- Remove the following six screws securing the logic board to the upper case:
 - One 3.1 mm T5 Torx screw
 - One 2.5 mm T5 Torx screw
 - One 5.5 mm silver, raised-head T5 Torx screw
 - Two 5.7 mm T5 Torx screws
 - One 3.8 mm silver T5 Torx screw

Step 32



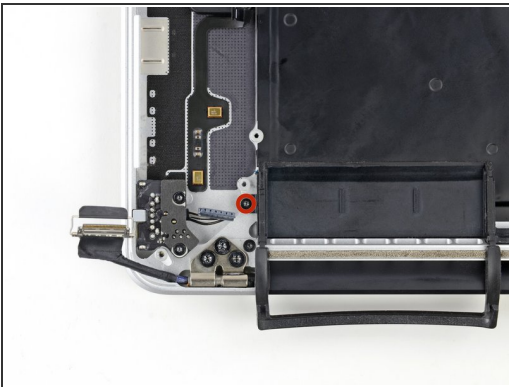
- Lifting from the side nearest the battery, rotate the logic board toward the top of the MacBook Pro.
 - ⓘ You may need to slide the logic board a few millimeters to the left in order to get clearance for the ports along the right edge of the board.
- Using the flat end of a spudger, carefully push the MagSafe 2 connector out of its socket on the bottom of the logic board.
 - ⓘ Disconnecting the MagSafe 2 connector can be difficult. If you are only removing the logic board to temporarily get it out of the way, such as for a battery replacement, you may find it easier to simply [remove the two 2.5 mm T5 Torx screws securing the MagSafe DC-In board](#), and then remove the logic board and MagSafe board together.

Step 33



- Remove the logic board assembly from the MacBook Pro.
- ☑ When reinstalling the motherboard, make sure all cables are visible and not trapped under the motherboard.
 - Clockwise from top: battery, right speaker, keyboard backlight, AirPort/camera, display, microphone, left speaker, keyboard, and trackpad.

Step 34 — Upper Case Assembly




- Remove the single 2.6 mm T5 Torx screw securing the left rubber hinge cover in place.
- Slide the hinge cover out of its bezel, then lift it up and out of the device.
- ⓘ The screw in the right hinge cover should already have been removed.
- Slide the right cover out of its bezel, then lift it out of the device.

Step 35



- Insert the edge of a plastic opening tool underneath the upper microphone.
- Slide the blade of a plastic opening tool along the bottom of the upper microphone, releasing the adhesive.

 Be careful when releasing the adhesive holding the cable down, as these cables have been known to tear easily.

- In a similar manner, release the adhesive underneath the lower microphone.
- Lift the cable out of the device.

Step 36



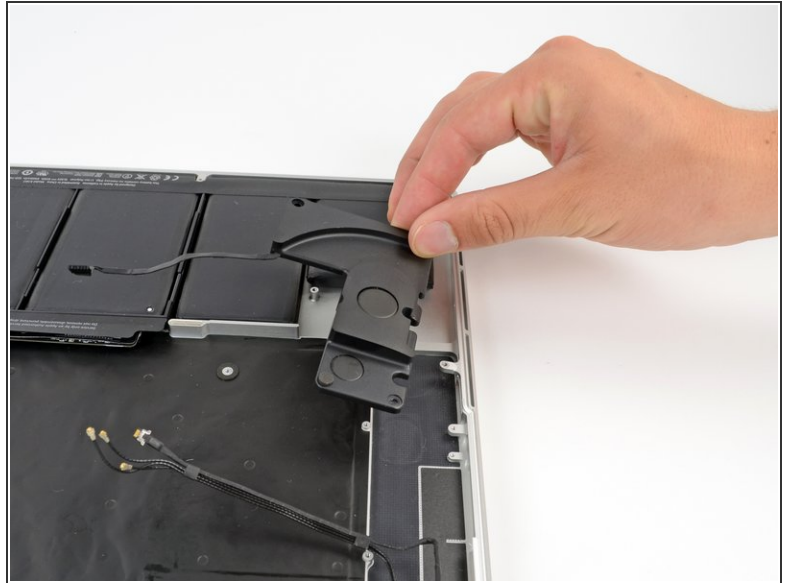
- Remove the two 4.0 mm T5 Torx screws securing the MagSafe DC-In board to the upper case.
- Slide the MagSafe DC-In board towards the right to free it from its recess within the upper case.
- Lift and remove the MagSafe DC-In board out of the upper case assembly.

Step 37



- Remove the following three screws securing the left speaker to the upper case:
 - One 5.6 mm T5 Torx screw
 - One 6.9 mm T5 Torx screw
 - One 2.6 mm T5 Torx screw
- Lift the left speaker out of the upper case and set it aside.

Step 38



- Remove the following three screws securing the right speaker to the upper case:
 - One 5.6 mm T5 Torx screw
 - One 6.9 mm T5 Torx screw
 - One 2.6 mm T5 Torx screw
- Remove the right speaker from the MacBook Pro.

Step 39



- Remove four out of the six 5.3 mm T8 Torx screws securing the display to the upper case.
- ⓘ We purposely have you leave two screws attaching the display to the upper case to aid in future steps.

Step 40



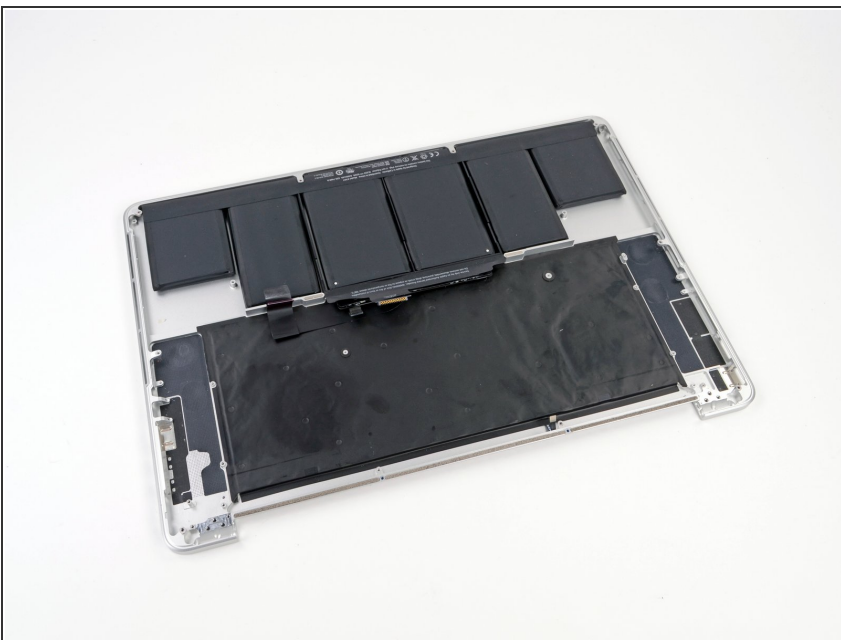
- ⓘ Open the device between 90 and 100 degrees, then rest it on its side.
- While supporting both halves of the device with one hand, unscrew the upper 5.3 mm T8 Torx screw.
- ⓘ Repeat the same process for the identical bottom screw.
- ⚠ Be sure to hold the display and upper case together with one hand. Failure to do so may cause the freed display/upper case to fall, potentially damaging each component.

Step 41



- Grip both halves of the device. Firmly put one hand on the top center of the upper case (left) and one in the same place on the display assembly (right).
- While holding the display assembly in place, slowly push forward on the upper case, releasing it from the display assembly.

Step 42



- Upper case remains.

To reassemble your device, follow these instructions in reverse order.