

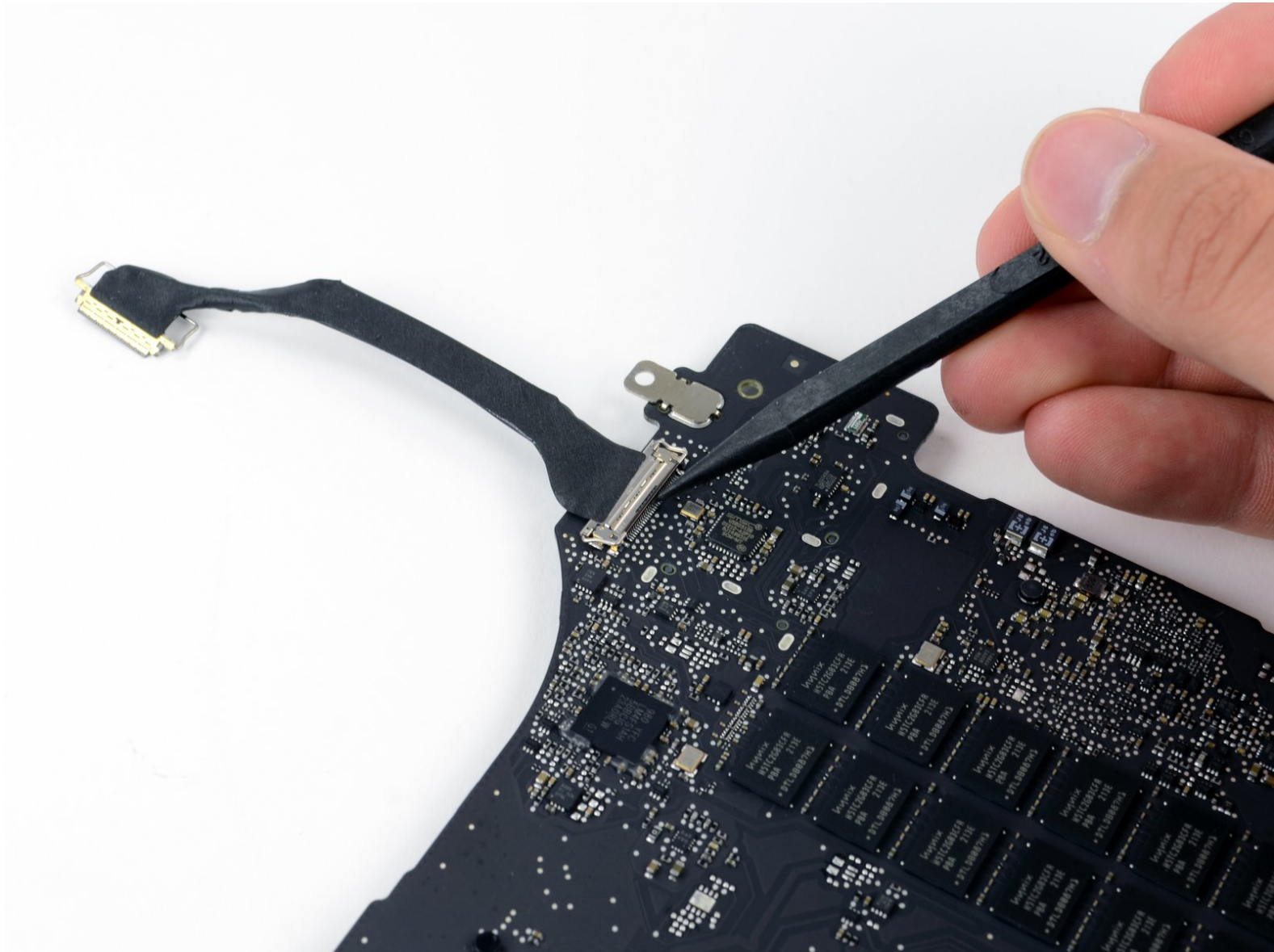


MacBook Pro 15" Retina Display Mid 2012

HDMI Data Transfer Cable Replacement

Pre-req only

Written By: Jake Devincenzi



INTRODUCTION

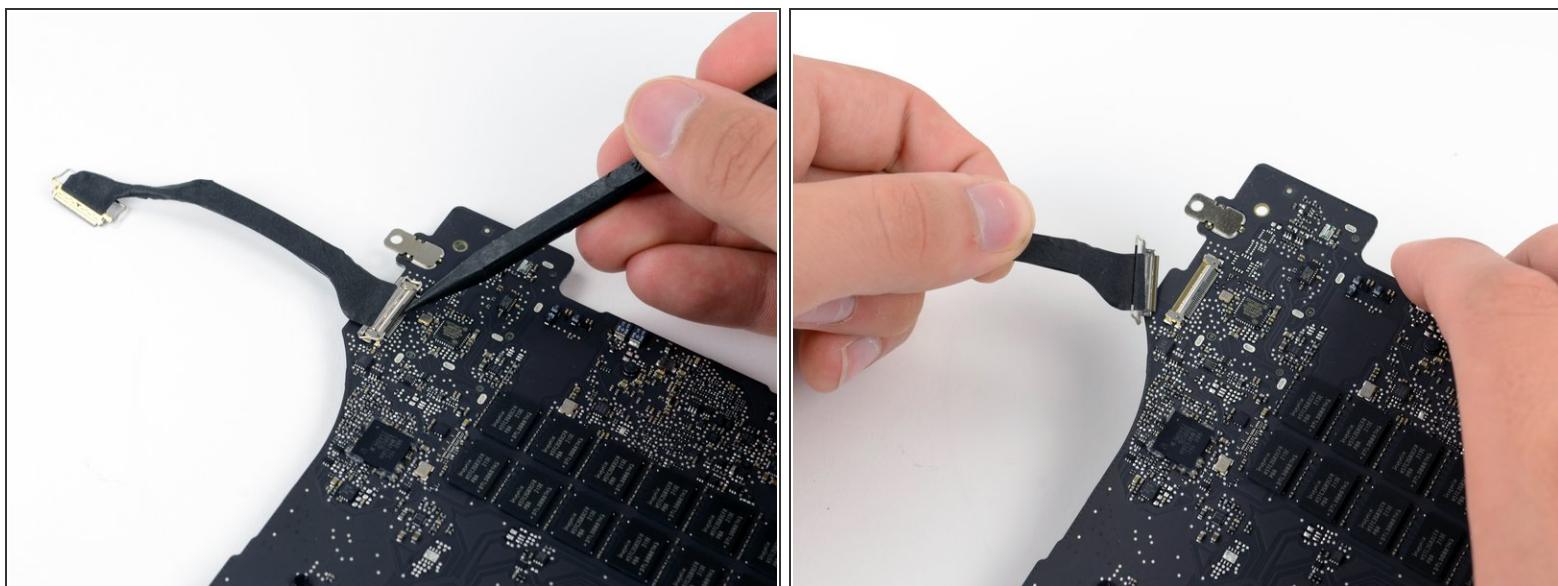
Pre-req only




TOOLS:

- [Spudger](#) (1)
-

Step 1 — HDMI Data Transfer Cable



- Use the tip of a spudger to pry the HDMI data transfer cable lock and rotate it upwards.
- Pull the HDMI data transfer cable straight out of its socket on the logic board.

 Do not lift up on the display data cable, as its socket is very fragile. Pull the cable parallel to the face of the logic board.

To reassemble your device, follow these instructions in reverse order.