



MacBook Pro 15" Retina Display Mid 2012

Logic Board Assembly Replacement

Replacing the Logic Board Assembly. Pre-req.

Written By: Brett Hartt



INTRODUCTION

Pre-req only.



TOOLS:

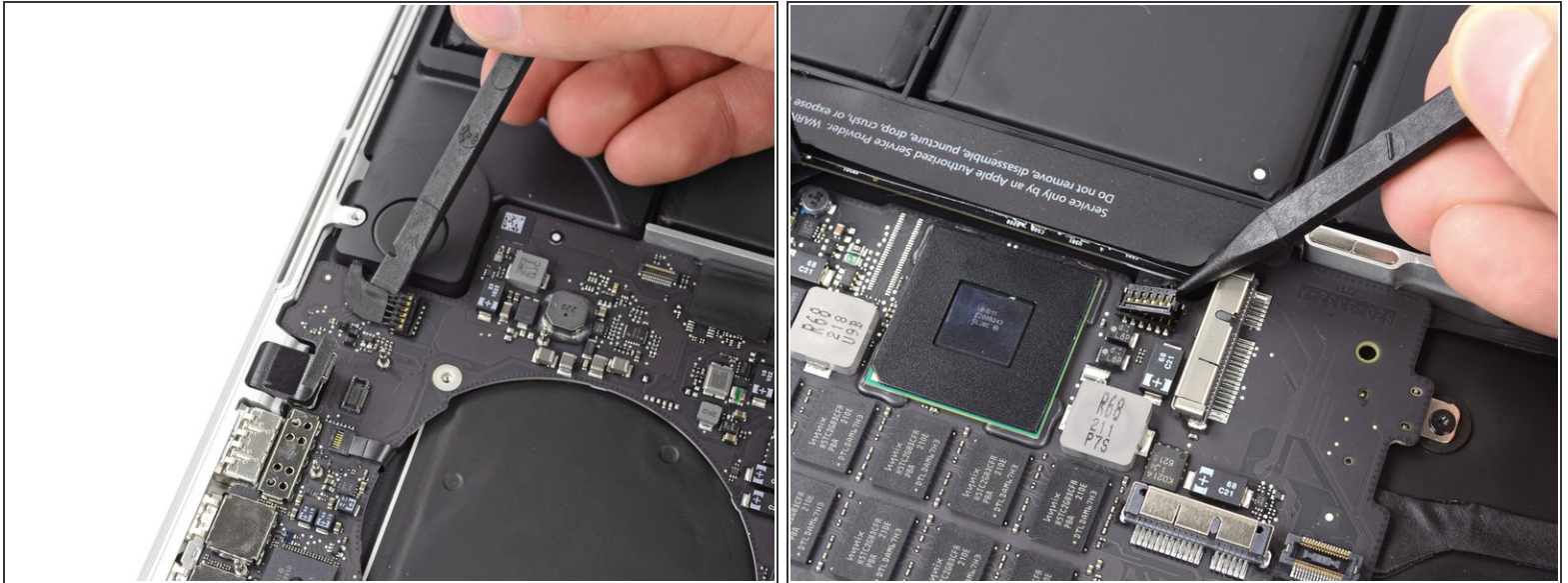
- [Spudger](#) (1)
 - [T5 Torx Screwdriver](#) (1)
-

Step 1 — Logic Board Assembly



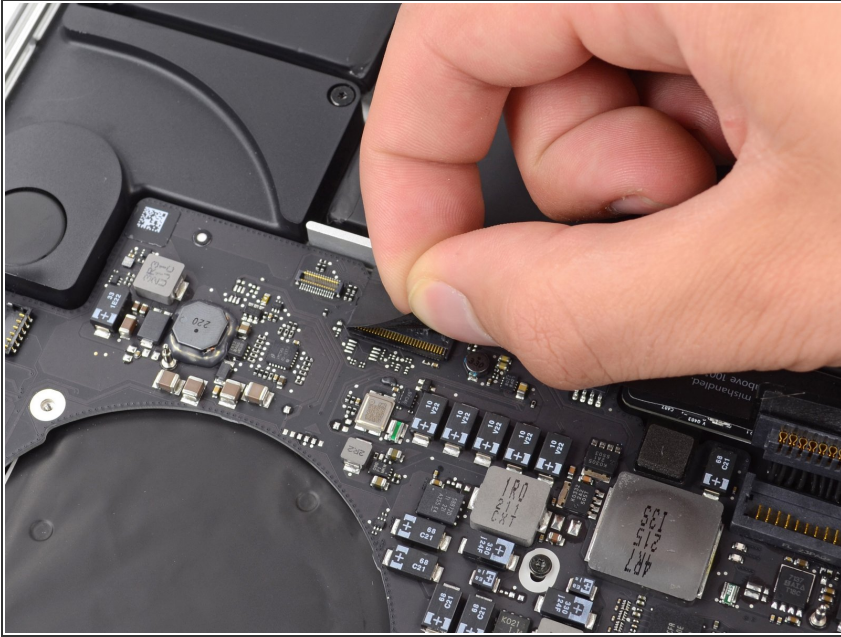
- Use the flat end of a spudger to pry the headphone jack connector up from its socket on the logic board.

Step 2



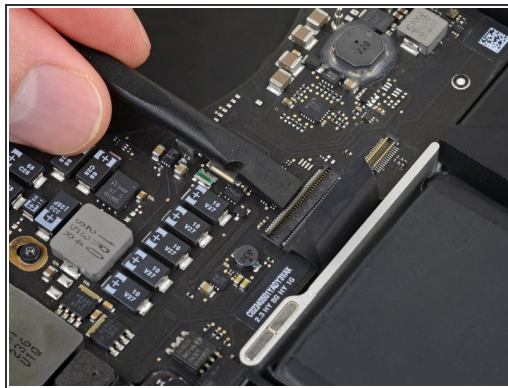
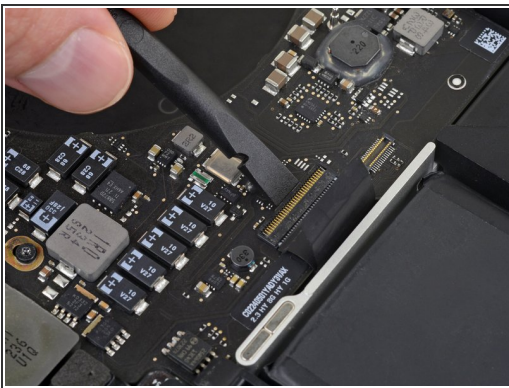
- Use the flat end of a spudger to pry the left speaker connector up and out of its socket on the logic board.
 - Use the tip of a spudger to pry the right speaker connector up and out of its socket on the logic board
- ⚠ Be sure to pry on the cable head, and not on the socket itself. Prying on the socket may cause it to separate from the logic board.


Step 3



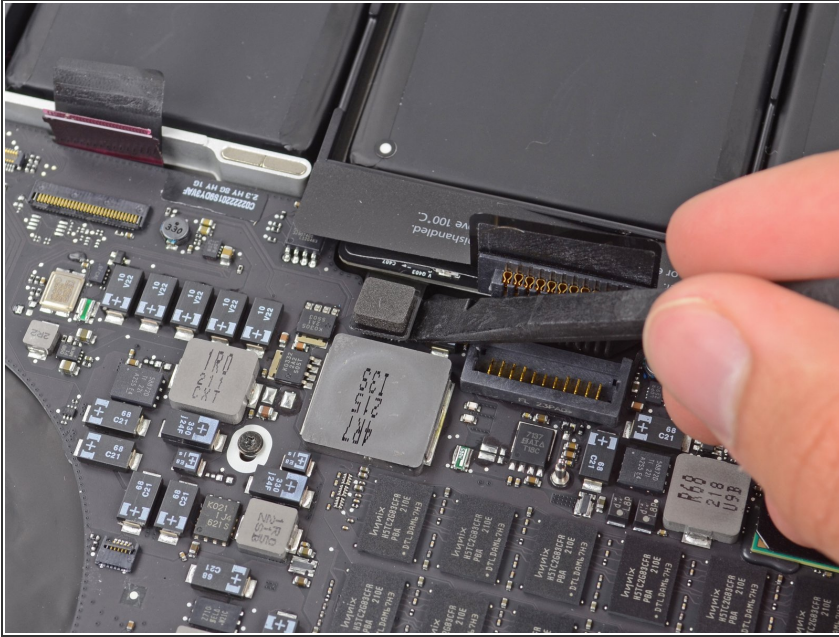
- Peel back any tape covering the keyboard ribbon cable connector.

Step 4



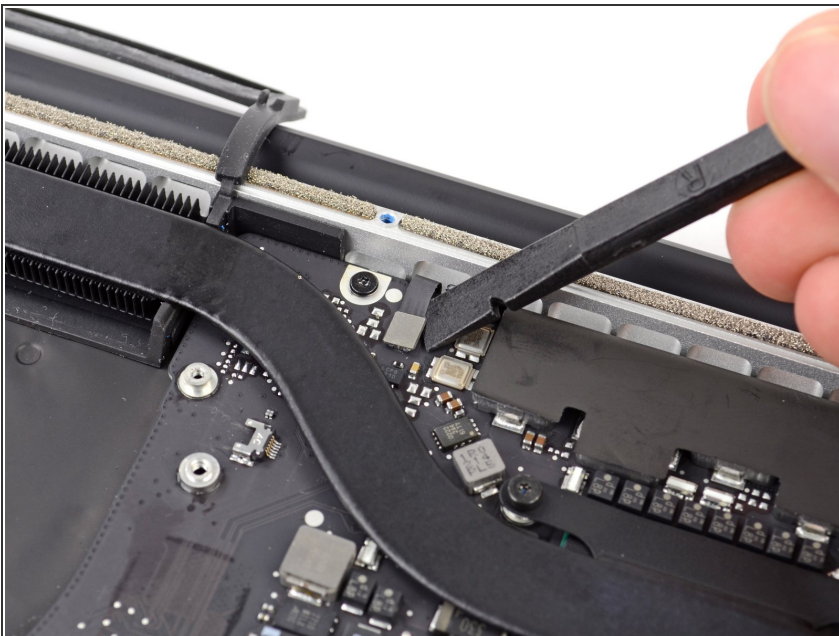
- Use the flat end of a spudger to flip up the retaining flap on the keyboard ribbon cable ZIF socket.
 Pry only under the hinged retaining flap, **not** the socket itself, or you may break it off the board.
- Use the flat end of a spudger to gently back the keyboard ribbon cable out of its socket by pushing first at one side, then the other.

Step 5



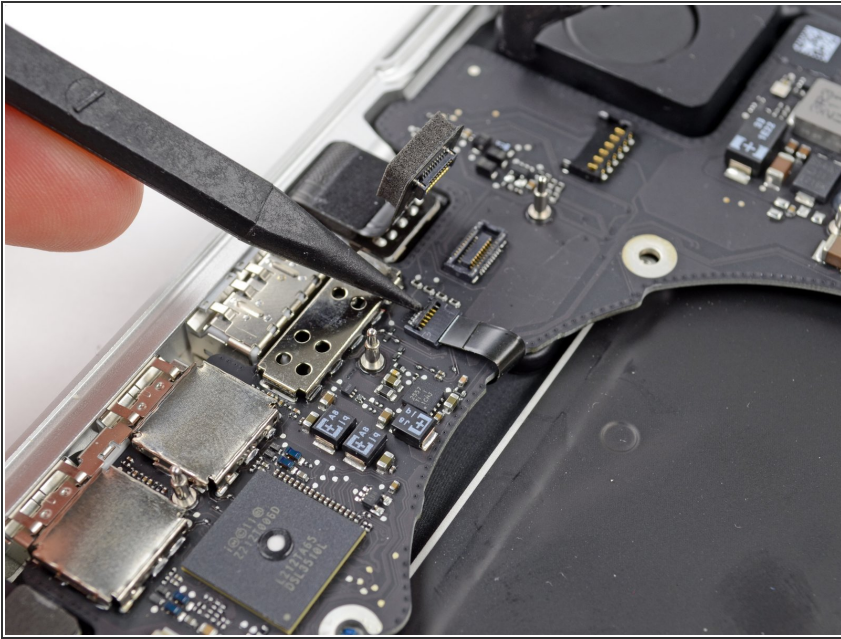
- Use the flat end of a spudger to pry the trackpad ribbon cable connector up from its socket on the logic board.

Step 6



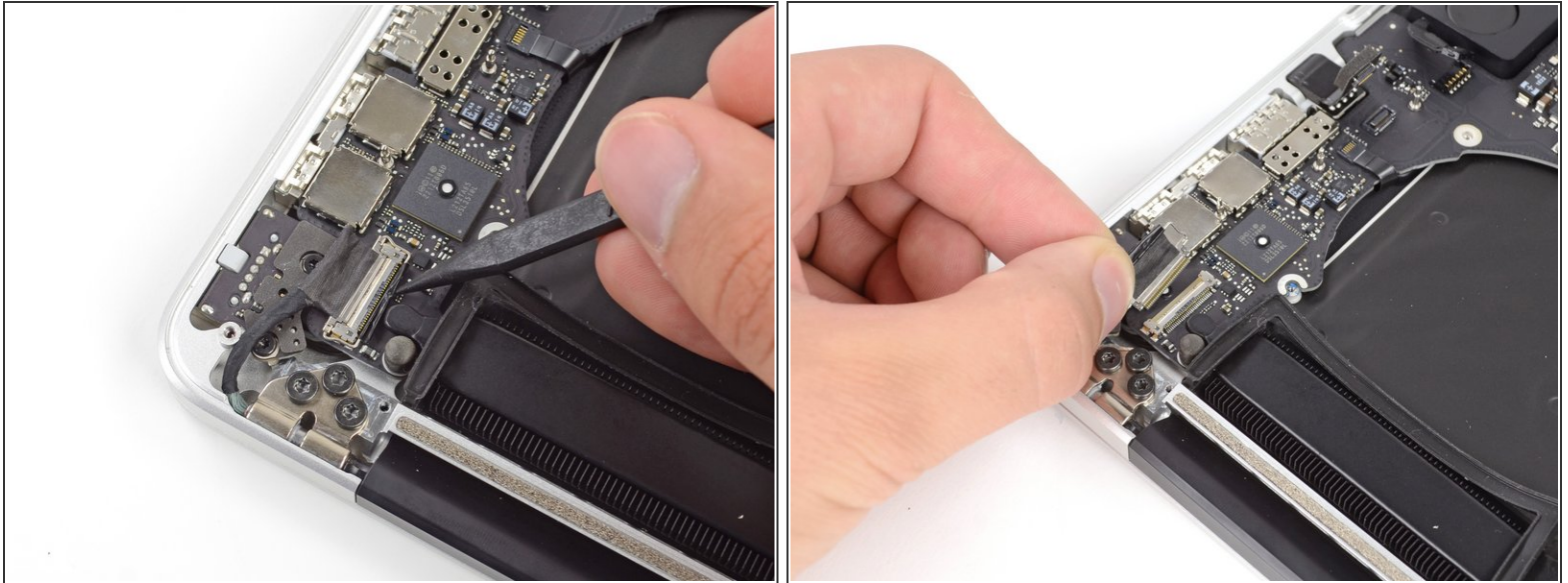
- Use the flat end of a spudger to pry the keyboard backlight connector up from its socket on the logic board.

Step 7



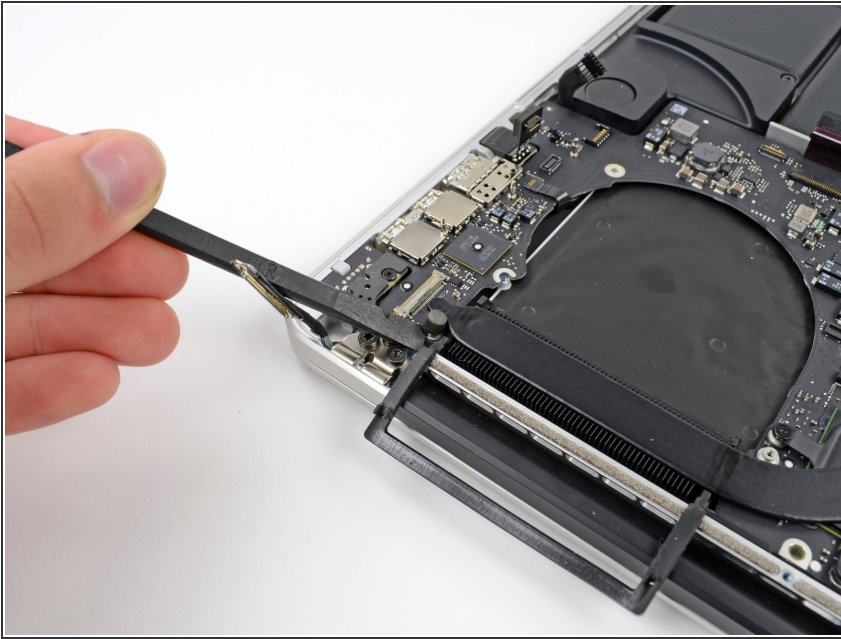
- Use the tip of a spudger or your fingernail to flip up the retaining flap on the microphone ribbon cable ZIF socket.
- ⚠ Be sure you are prying up on the hinged retaining flap, **not** the socket itself.
- Pull the microphone ribbon cable out of its socket.

Step 8



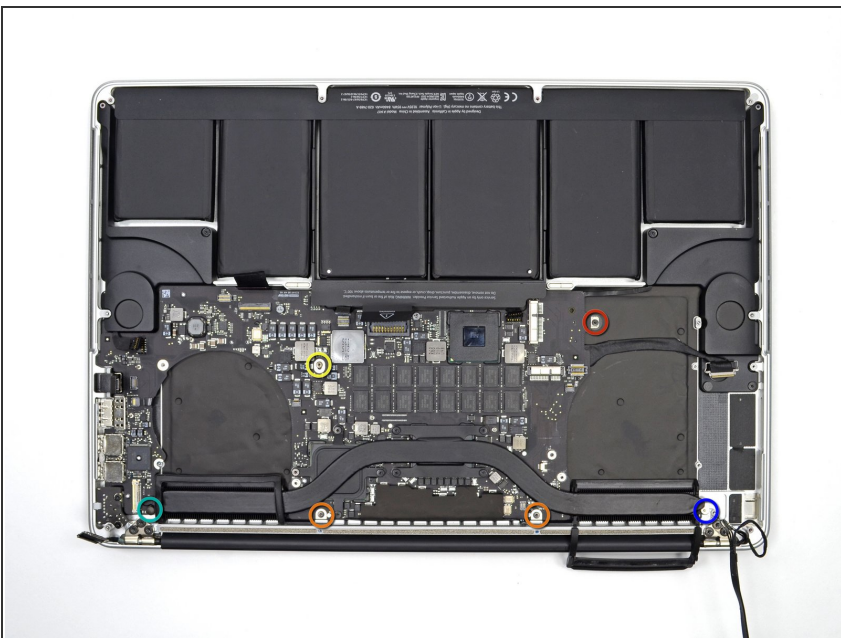
- Use the tip of a spudger to pry the display data cable lock and rotate it toward the DC-In side of the computer.
 - Pull the display data cable straight out of its socket on the logic board.
- ⚠ Do not lift up on the display data cable, as its socket is very fragile. Pull the cable parallel to the face of the logic board.

Step 9



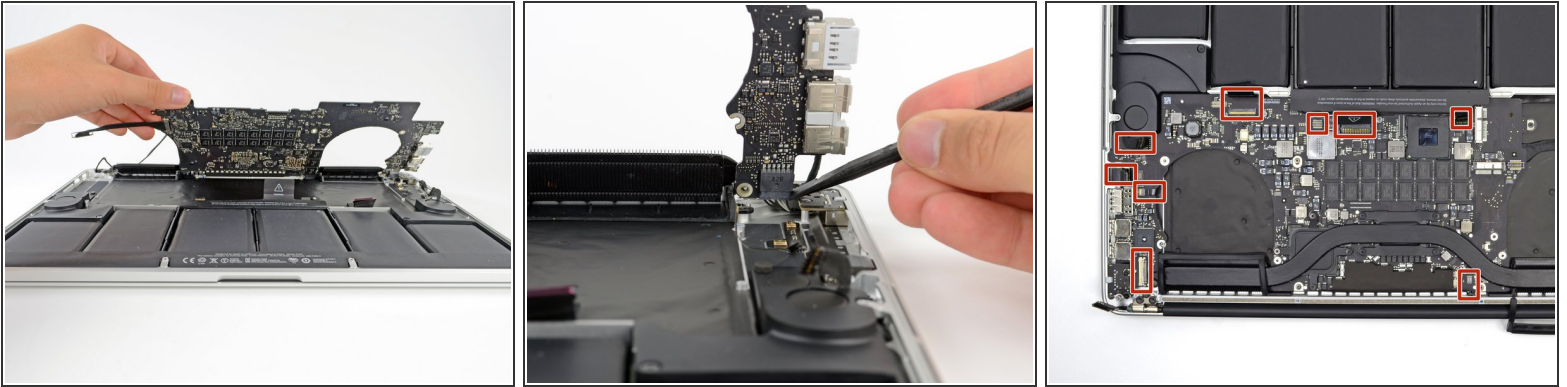
- Use the flat end of a spudger to carefully pry off the rubber screw cap on the raised screw head near to the MagSafe 2 connector.

Step 10



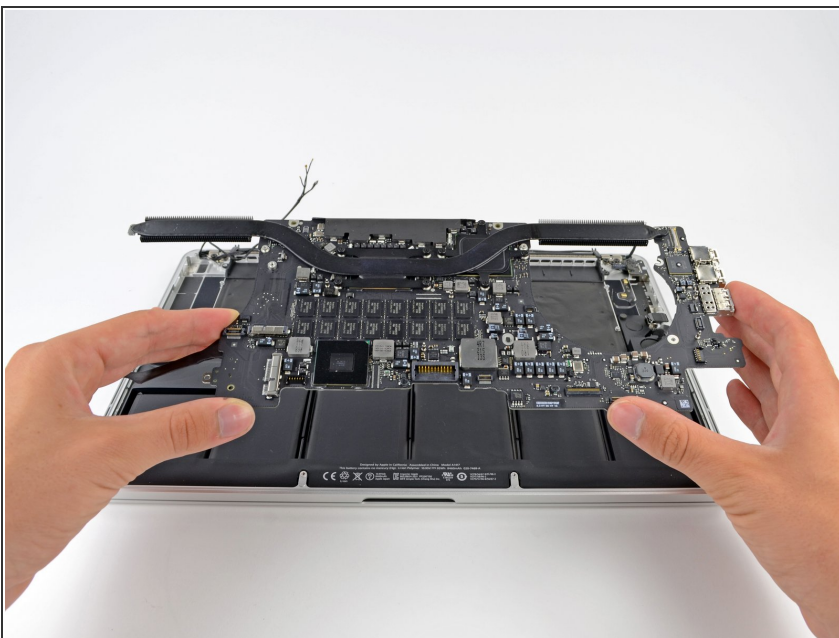
- Remove the following six screws securing the logic board to the upper case:
 - One 2.6 mm T5 Torx screw
 - Two 5.8 mm T5 Torx screws
 - One 3.8 mm T5 Torx screw
 - One 5.2 mm Raised Head T5 Torx screw
 - One 3.5 mm Silver T5 Torx screw

Step 11



- Lifting from the side nearest the battery, rotate the logic board toward the top of the MacBook Pro.
- Using the flat end of a spudger, carefully push the MagSafe 2 connector out of its socket on the bottom of the logic board.
- ☑ When reinstalling the logic board, check the cables at the marked locations to make sure they don't get pinned underneath the logic board.
 - Clockwise from top: keyboard, trackpad, battery, right speaker, keyboard backlight, display, microphone, headphone jack, left speaker.

Step 12



- Remove the logic board assembly from the MacBook Pro.

To reassemble your device, follow these instructions in reverse order.