



MacBook Pro 15" Retina Display Mid 2015 Display Assembly Replacement

Replace the display assembly in your MacBook Pro 15" Retina Display Mid 2015.

Written By: Andrew Optimus Goldheart



INTRODUCTION

Do you have a cracked screen or see weird vertical lines? Fear not! Use this guide to remove/replace the display assembly if something terrible has happened to the beautiful Retina display of your MacBook Pro.



TOOLS:

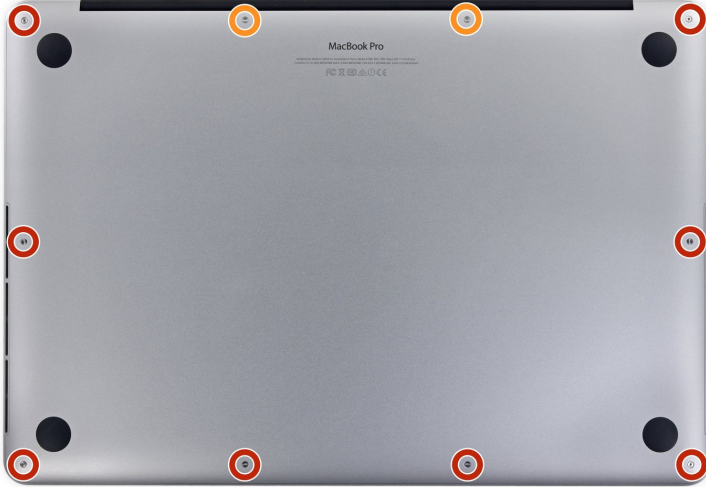
- [P5 Pentalobe Screwdriver Retina MacBook Pro and Air](#) (1)
- [Spudger](#) (1)
- [T5 Torx Screwdriver](#) (1)
- [T8 Torx Screwdriver](#) (1)
- [Tweezers](#) (1)



PARTS:

- [MacBook Pro 15" Retina \(Mid 2015\) Display Assembly](#) (1)

Step 1 — Lower Case



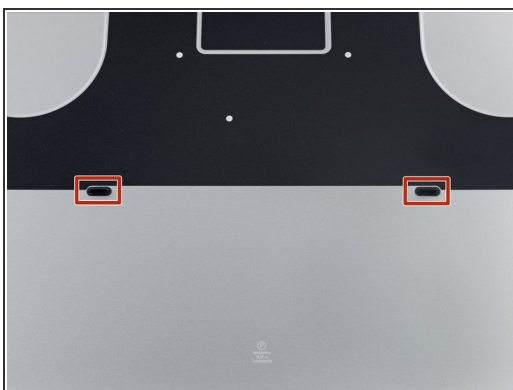
- Remove the following P5 pentalobe screws securing the lower case to the MacBook Pro:
 - Eight 3.1 mm
 - Two 2.3 mm



Step 2



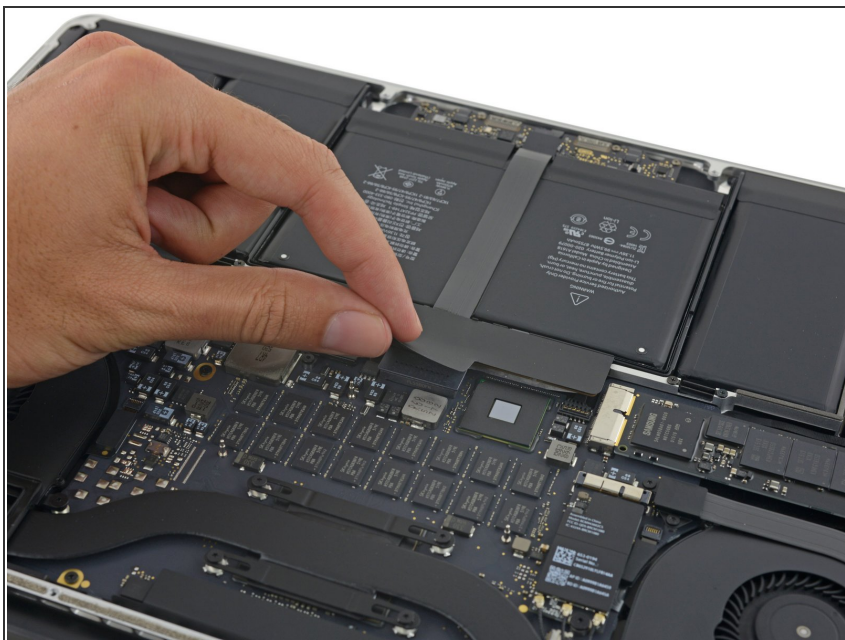
- Lifting from the edge nearest the clutch cover, lift the lower case off the MacBook Pro.

Step 3



-  The lower case has two plastic pegs (red) that fit into plastic clips in the upper case (orange).
-  During reassembly, gently push down the center of the lower case to reattach the case to its two plastic clips.

Step 4 — Battery Connector



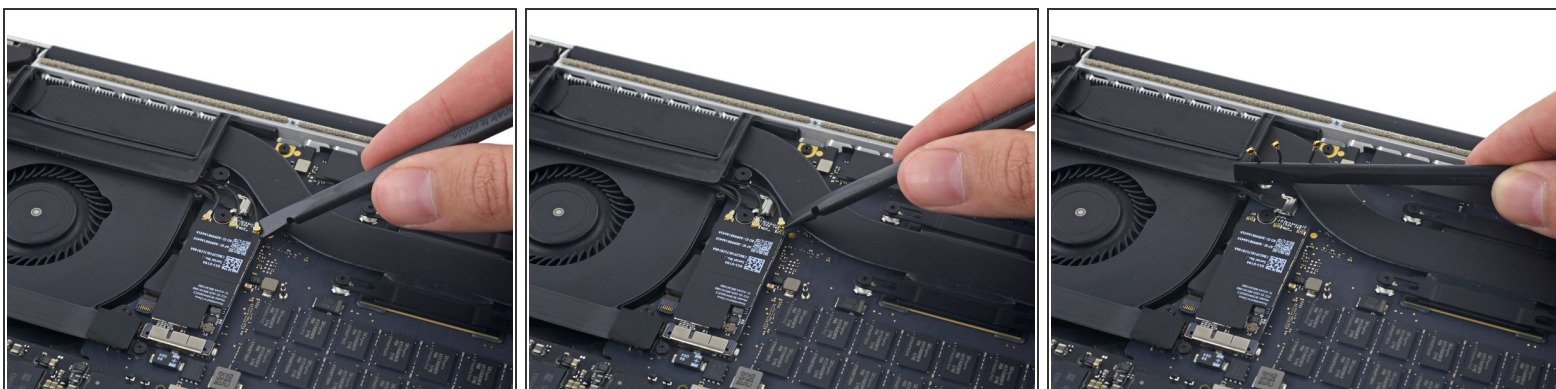
- Peel back the sticker covering the battery connector.

Step 5



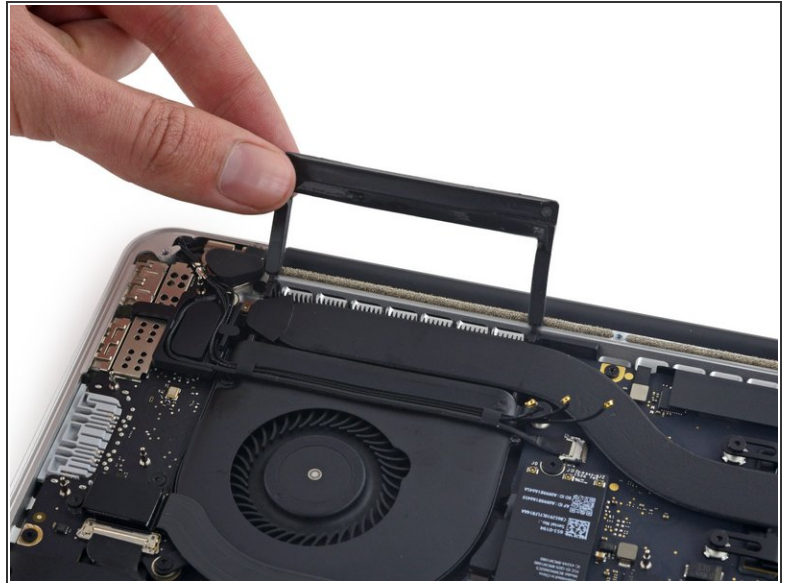
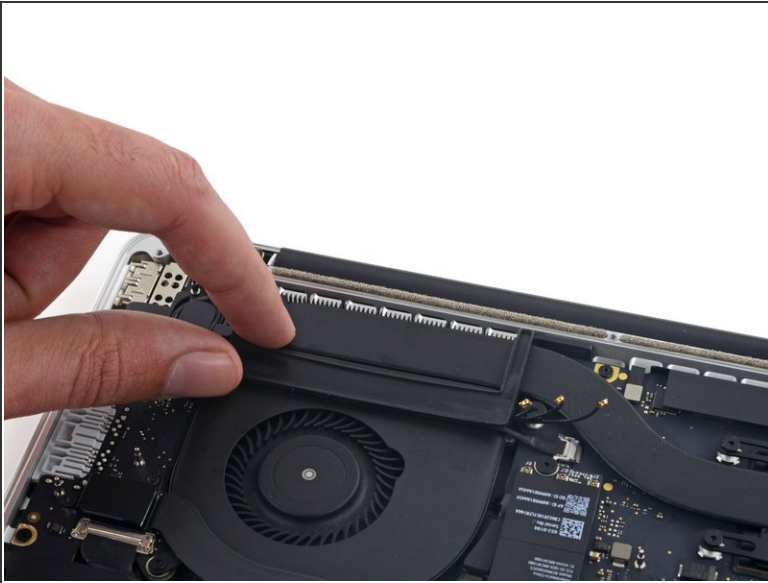
- Gently lift each side of the battery connector to pry the connector out of its socket on the logic board.
- Bend the connector back toward the battery, ensuring that the battery connector doesn't accidentally make contact with the logic board.

Step 6 — AirPort/Camera Cables



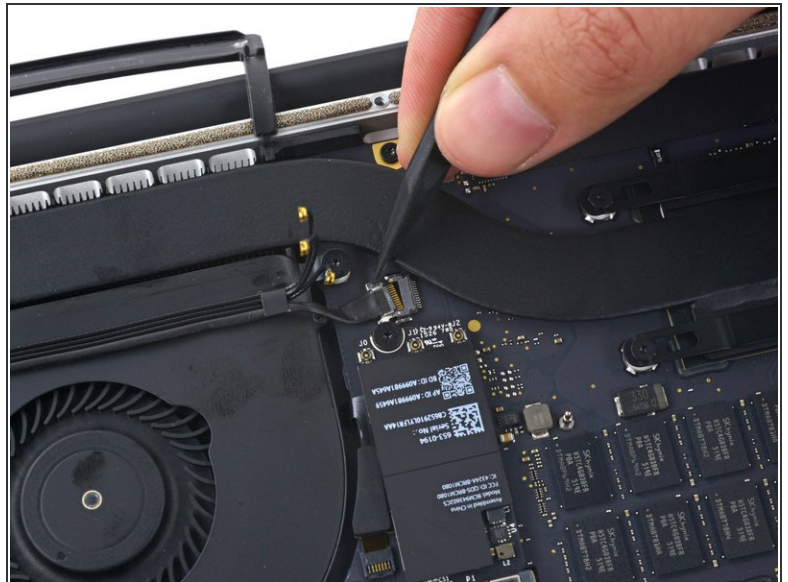
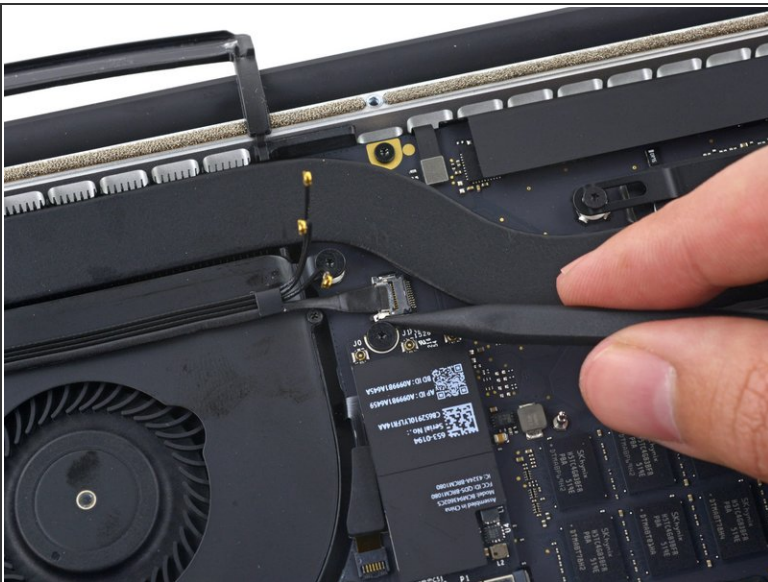
- Use a spudger or tweezers to pry the three AirPort antenna cables straight up off of their sockets on the AirPort board, and bend them up and out of the way.
- ⚠ The cable connection points are **very** fragile. Be careful to lift only on the connector, and not on the socket or cable.
- ☑ To reconnect, align the connector carefully into position over the socket, and press it down firmly with the flat of your spudger.

Step 7



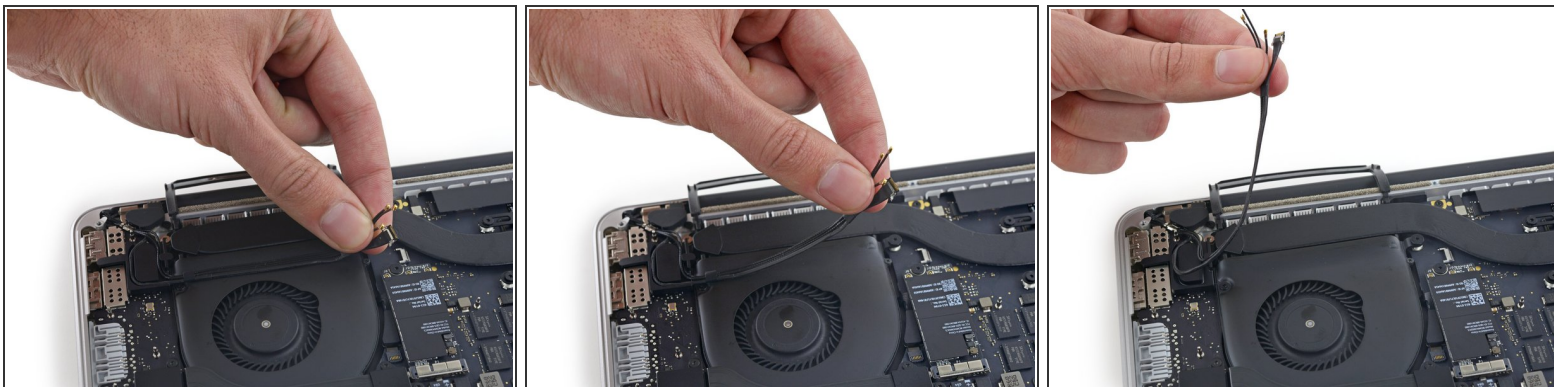
- Peel the right rubber cover up off the fan and fold it out of the way.

Step 8



- Use the tip of a spudger to push the camera cable connector out of its socket on the logic board.
 - ⓘ Be sure to push parallel to the board, pushing first on one side, then the other to "walk" the connector out of its socket.

Step 9



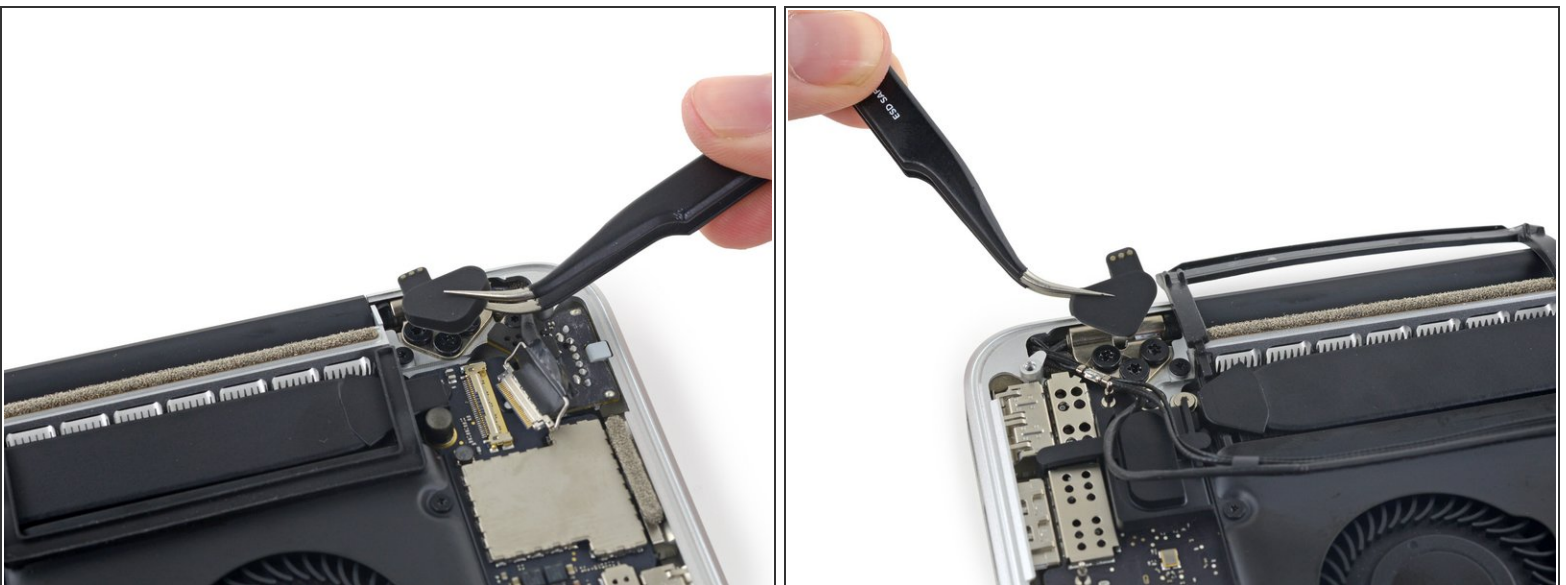
- Use your fingers to pull the AirPort/Camera cables up off the fan.
 - ❗ The cables are adhered to the fan, so peel them up carefully to avoid damaging them.
 - Carefully de-route the cables from the plastic cable guide.
- ✦ On reassembly, there should be enough adhesive still on these cables to stick them back down to the fan.

Step 10 — Display Assembly



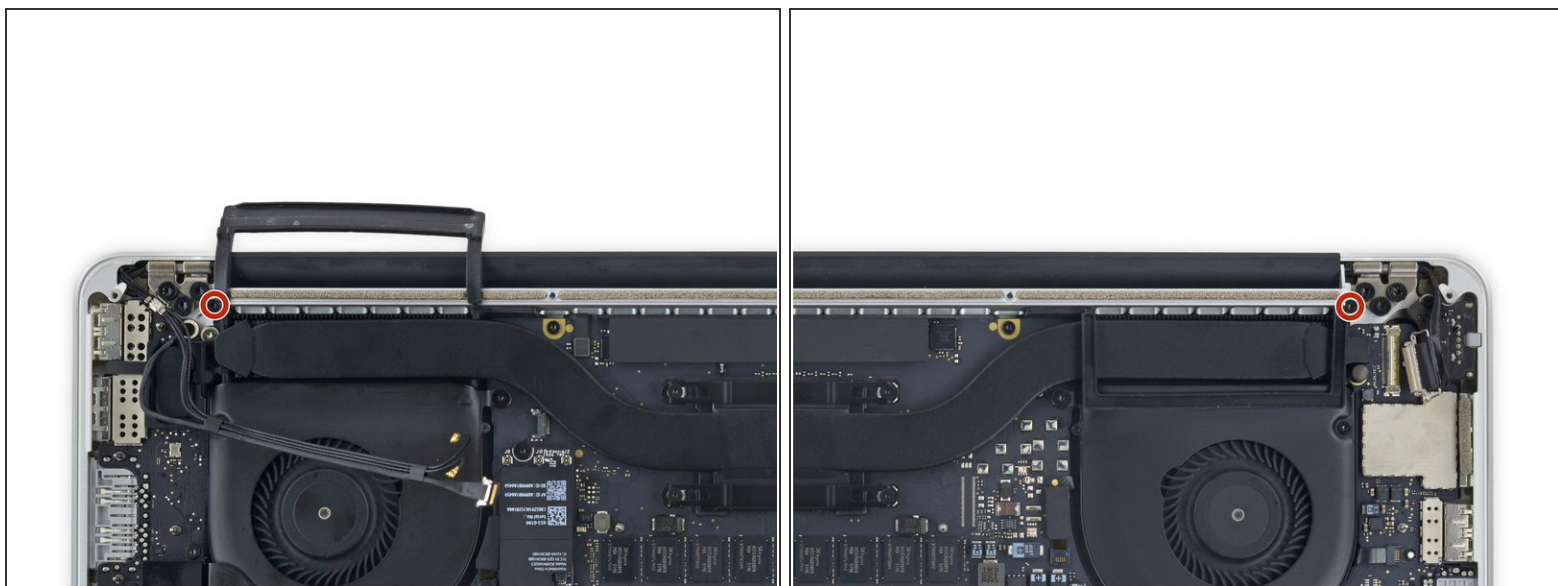
- Use the tip of a spudger to flip up the display data cable lock and rotate it toward the MagSafe 2 power port side of the computer.
- Pull the display data cable straight out of its socket on the logic board.
 - ⚠ Do not lift up on the display data cable, as its socket is very fragile. Pull the cable parallel to the face of the logic board.
 - ⚠ Do not touch the contacts on the data connector or its socket with your fingers or any tools, as you may deposit oils or damage the pins.

Step 11



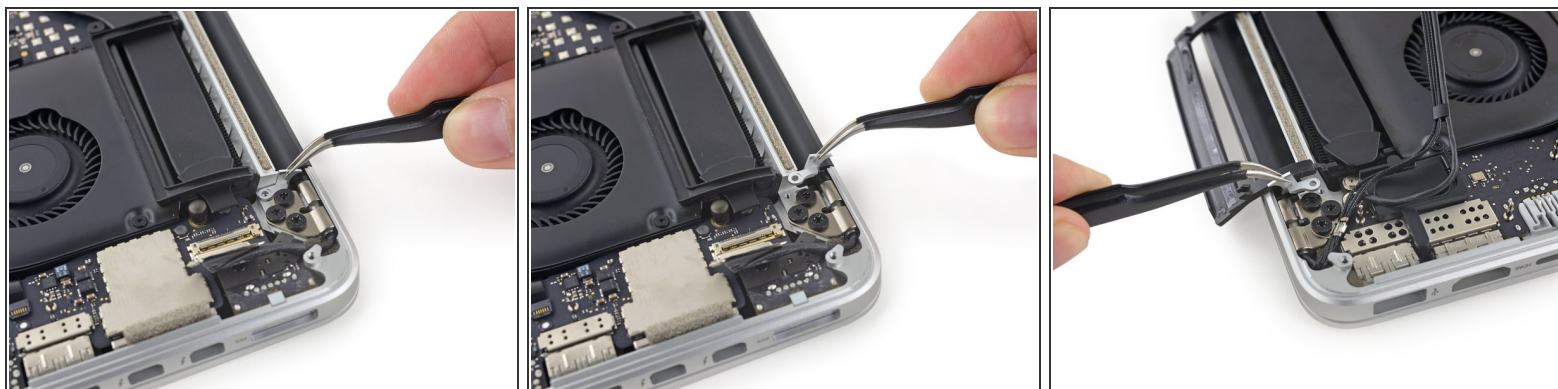
- Remove the two rubber hinge covers.

Step 12



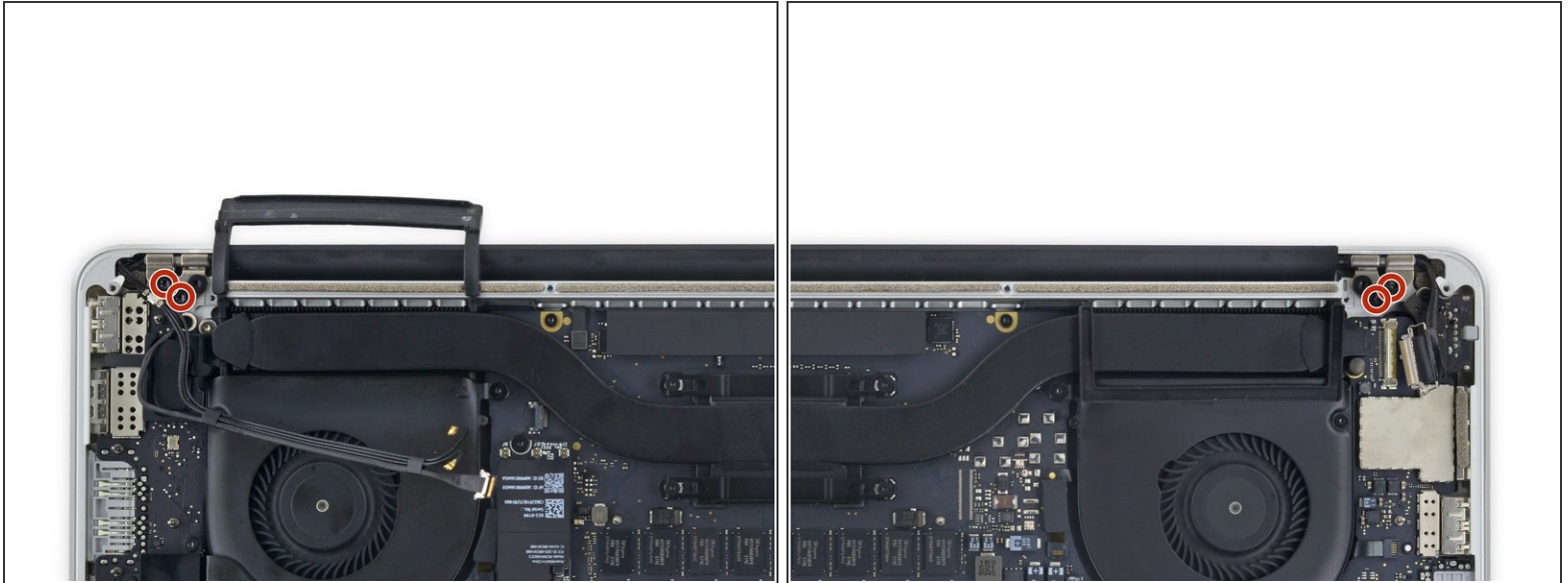
- Remove the two 3.2 mm T5 Torx screws securing the aluminum hinge covers to the upper case.

Step 13



- Remove the two aluminum hinge covers from the MacBook Pro.

Step 14



- Remove four out of the six 5.3 mm T8 Torx screws securing the display to the upper case.
 - Leave the innermost screws (one from each hinge) in place.
- ☒ When reassembling, be sure the two screws going back into the hinge on the left go back through the webcam/AirPort cable bracket.

Step 15



- Open the MacBook Pro approximately 110 degrees, and place it sideways on the table, as shown.


Step 16



- While holding the display and upper case together with your left hand, remove the remaining T8 Torx screw from the lower (closer to the table) display bracket.

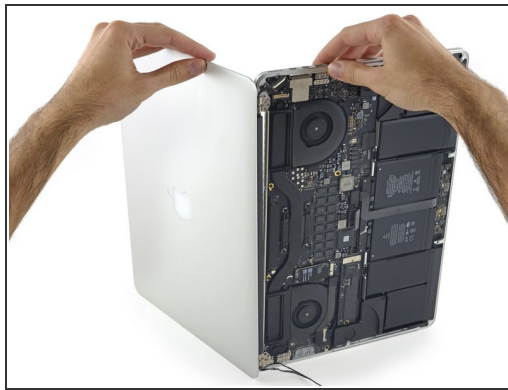
Step 17




 Be sure to hold the display and upper case together with your left hand. Failure to do so may cause the freed display/upper case to fall, potentially damaging each component.

- While holding the display and upper case together with your left hand, remove the remaining T8 Torx screw from the upper display bracket.

Step 18



- Grip both halves of the device, one in each hand.
 - Gently push forward on the bottom half of the device to detach it from the display assembly.
 - Carefully set each component aside, making sure to set down the bottom half keyboard-side down to avoid damaging internal components.
-  Replacement displays may not have their hinges adjusted to the correct angle. Use needle nose pliers to gently adjust them to match the hinges on the display being replaced.

To reassemble your device, follow these instructions in reverse order.