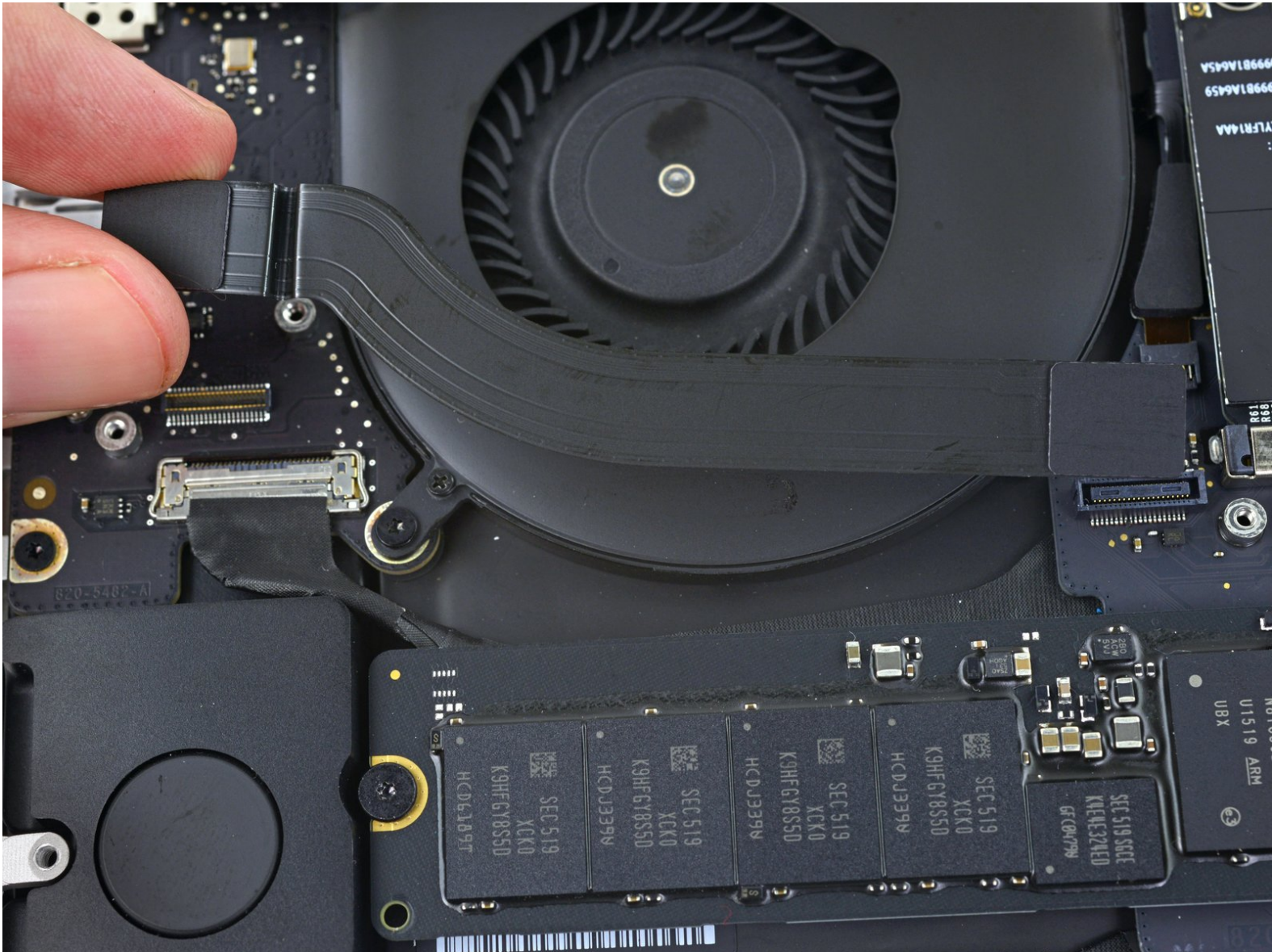




MacBook Pro 15" Retina Display Mid 2015 I/O Board Cable (Top) Replacement

Replace the Top I/O board cable in a MacBook Pro 15" Retina Display Mid 2015.

Written By: Andrew Optimus Goldheart



INTRODUCTION

Input, Output, Sideput. Whatever kind of puting you will be doing, a faulty I/O board cable is going to severely limit the functionality of your MacBook Pro. This guide will show you how to replace it.



TOOLS:

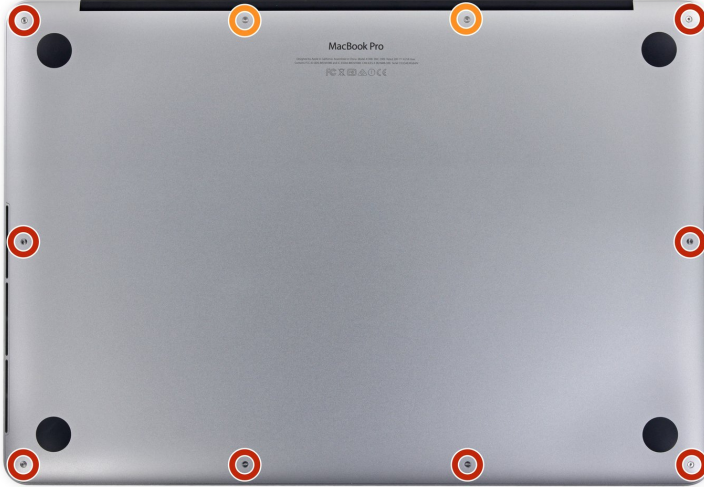
- [T5 Torx Screwdriver](#) (1)
- [Tweezers](#) (1)
- [P5 Pentalobe Screwdriver Retina MacBook Pro and Air](#) (1)
- [Spudger](#) (1)



PARTS:

- [MacBook Pro 15" Retina \(Mid 2015\) I/O Board Cable](#) (1)

Step 1 — Lower Case



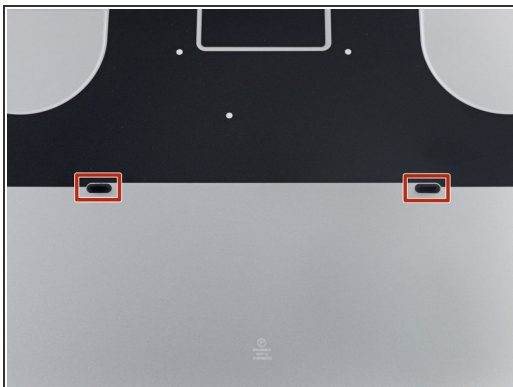
- Remove the following P5 pentalobe screws securing the lower case to the MacBook Pro:
 - Eight 3.1 mm
 - Two 2.3 mm



Step 2



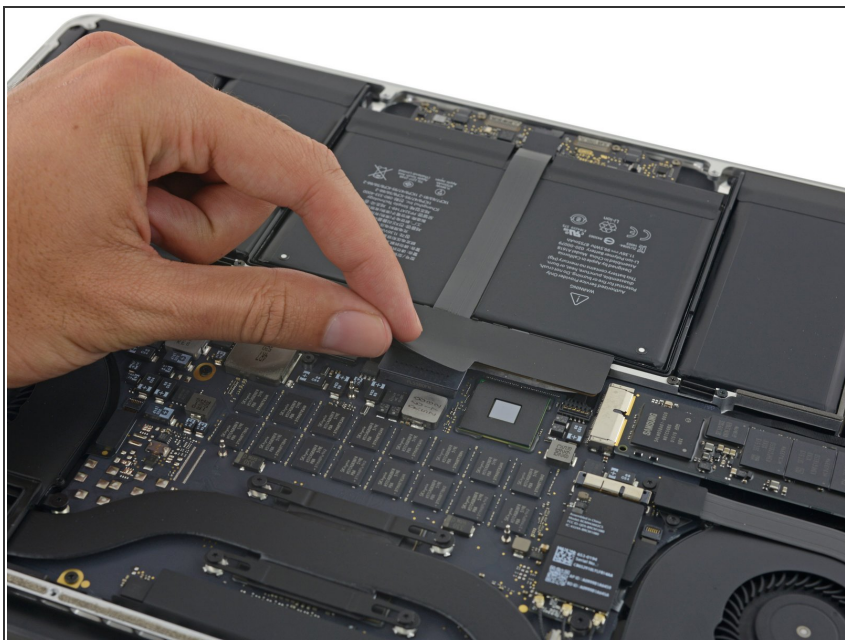
- Lifting from the edge nearest the clutch cover, lift the lower case off the MacBook Pro.

Step 3



-  The lower case has two plastic pegs (red) that fit into plastic clips in the upper case (orange).
-  During reassembly, gently push down the center of the lower case to reattach the case to its two plastic clips.

Step 4 — Battery Connector



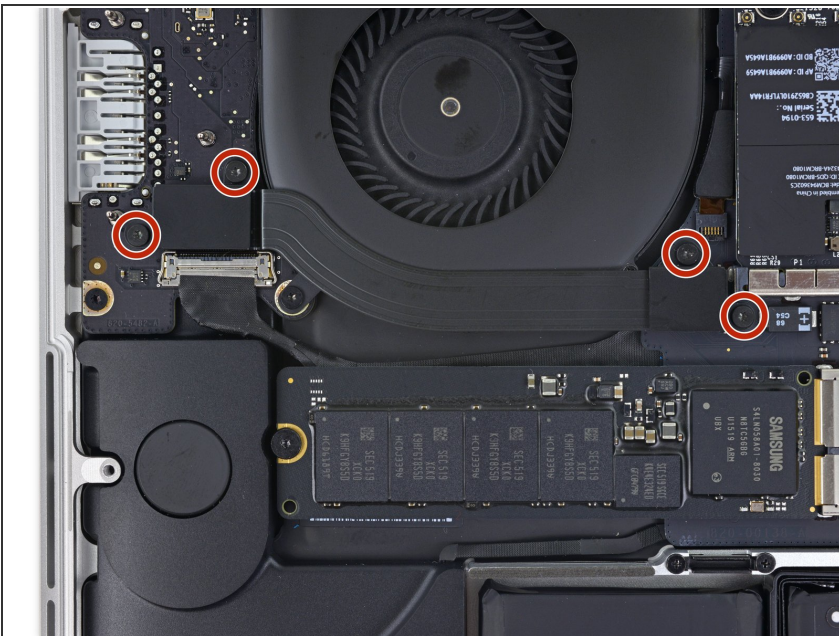
- Peel back the sticker covering the battery connector.

Step 5



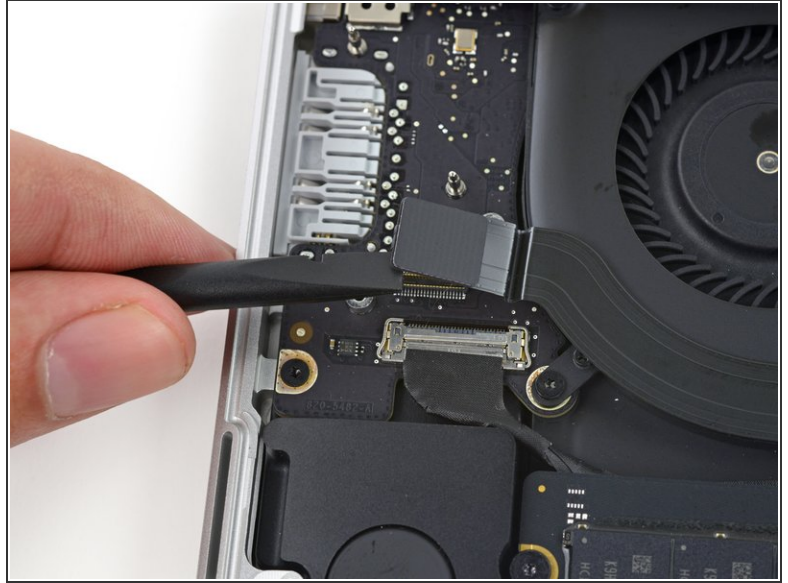
- Gently lift each side of the battery connector to pry the connector out of its socket on the logic board.
- Bend the connector back toward the battery, ensuring that the battery connector doesn't accidentally make contact with the logic board.

Step 6 — I/O Board Cable (Top)



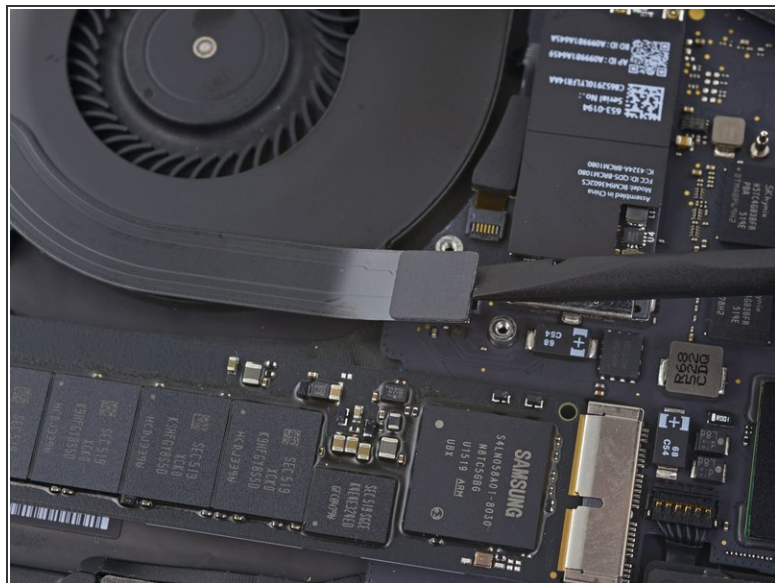
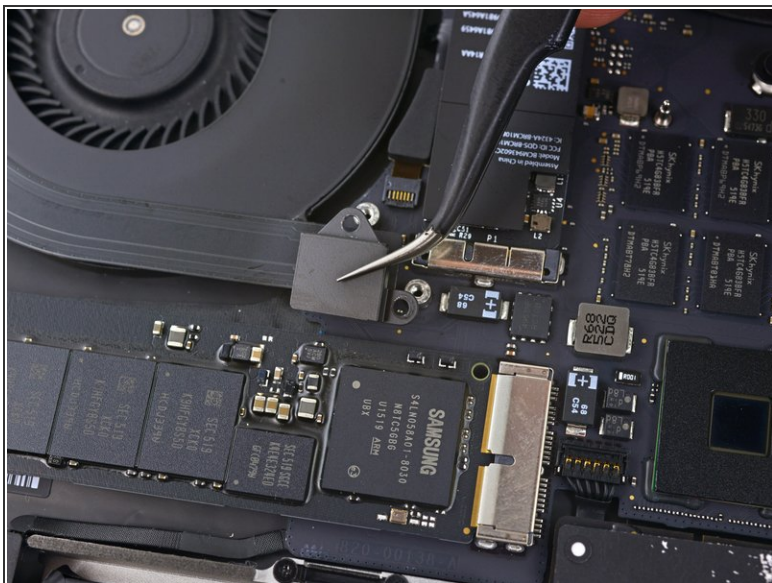
- Remove the four 2.2 mm T5 Torx screws securing the I/O board cable connector covers.

Step 7



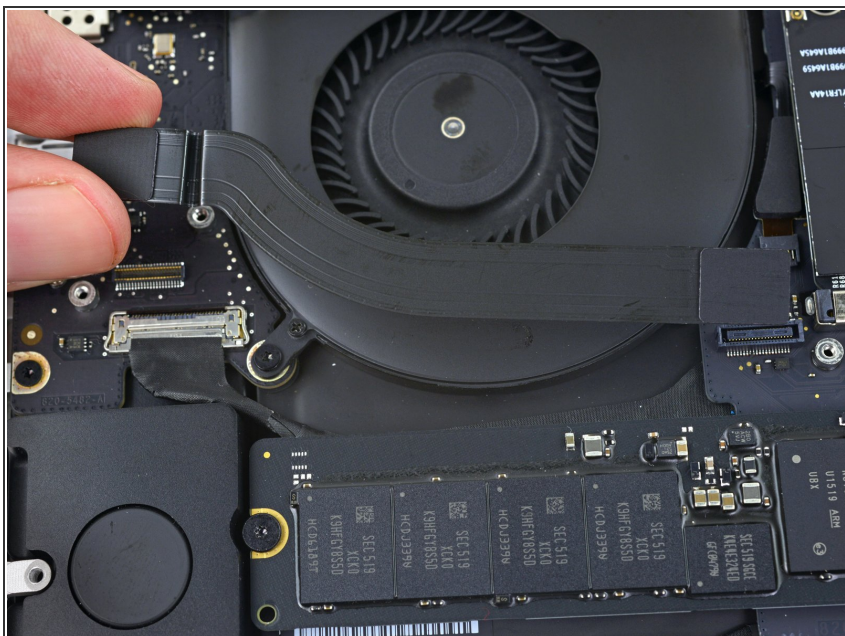
- Remove the left connector cover.
- Use the flat end of a spudger to pry the left end of the I/O board cable up from its socket on the logic board.

Step 8



- Remove the right connector cover.
- Use the flat end of a spudger to pry the right end of the I/O board cable up from its socket on the logic board.

Step 9



- Peel the top I/O board cable up from the adhesive securing it to the fan.
- Remove the cable.

To reassemble your device, follow these instructions in reverse order.