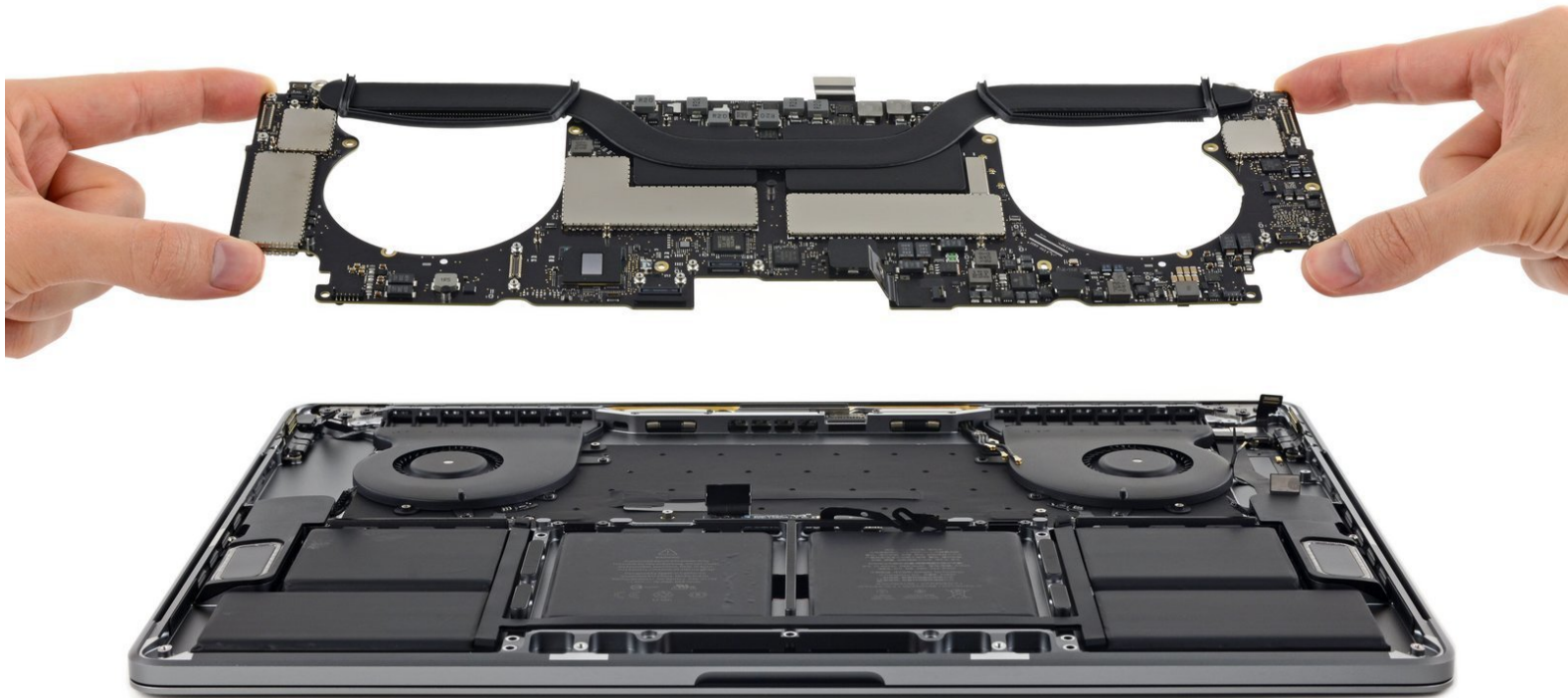




MacBook Pro 15" Touch Bar Late 2016 Logic Board Replacement

Use this guide to replace the Logic Board in your MacBook Pro 15" Touch Bar Late 2016

Written By: Arty



INTRODUCTION

[video: https://www.youtube.com/watch?v=wbZ_Q-Z7Sk4]

Use this guide to replace the Logic Board in your MacBook Pro 15" Touch Bar Late 2016.

Don't forget to clean and re-apply thermal paste if you remove the heat sink. Follow [this guide](#) to learn how.

To reassemble your device, follow these instructions in reverse order.