



# MacBook Pro 15" Unibody 2.53 GHz Mid 2009 Battery Replacement

If your battery no longer holds a charge, use this guide to replace it.

Written By: Walter Galan



# INTRODUCTION

Use this guide to replace an old or faulty battery. If your battery is swollen, [take appropriate precautions](#).



## TOOLS:

- [P6 Pentalobe Screwdriver 2009 MacBook Pro Battery](#) (1)
- [Phillips #00 Screwdriver](#) (1)



## PARTS:

- [MacBook Pro 15" Unibody \(Mid 2009/Mid 2010\) Replacement Battery](#) (1)

## Step 1 — Lower Case



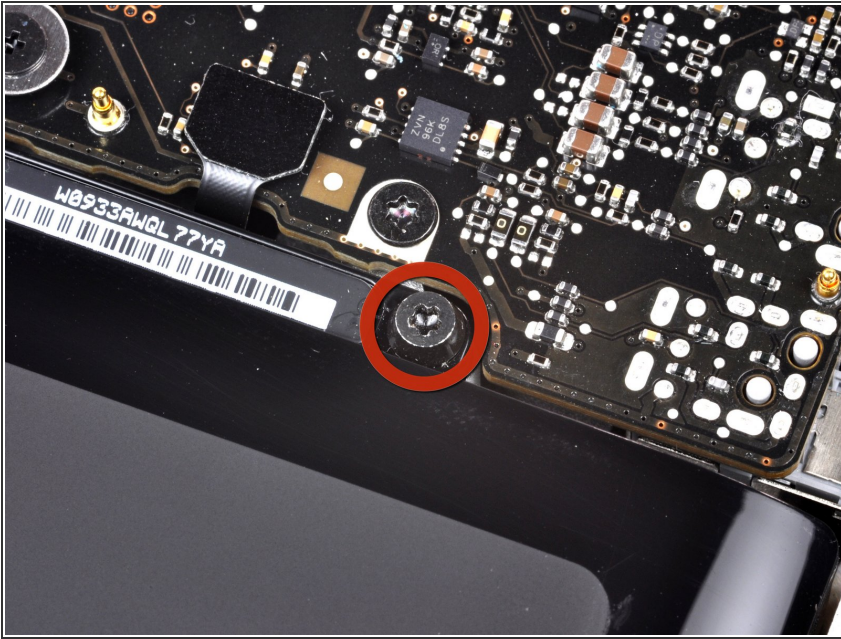
- Remove the following ten screws securing the lower case to the upper case:
  - Seven 3 mm Phillips screws.
  - Three 13.5 mm Phillips screws.

## Step 2



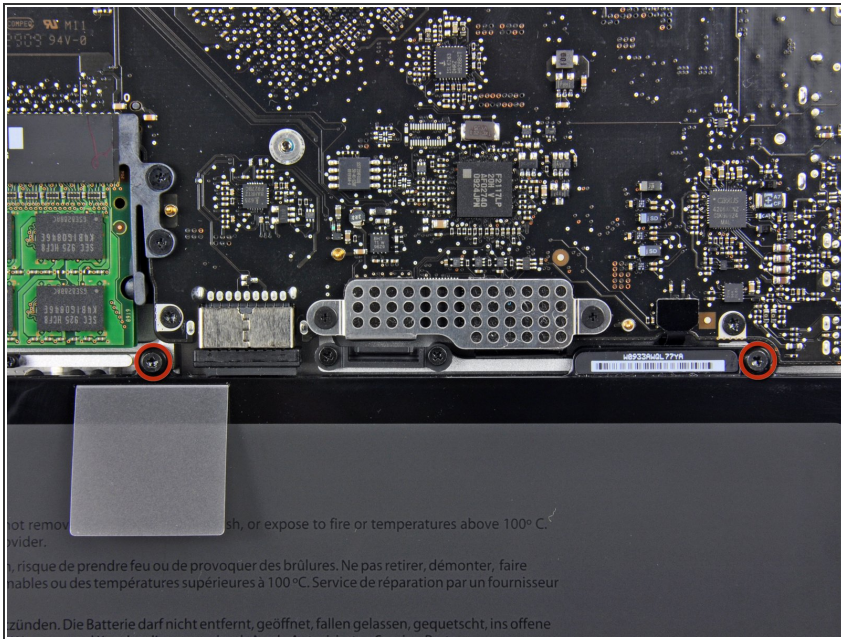
- Using both hands, lift the lower case near the vent to pop it off two clips securing it to the upper case.
- Remove the lower case and set it aside.

## Step 3 — Battery



- Three Pentalobe screws secure the battery to the upper case. They can be removed with [this special driver](#).
- ⓘ If you don't have a Pentalobe driver, a 1.5 mm flathead screwdriver can be used in a pinch. Be sure the head of your flathead screwdriver fits snugly across two of the five "points" of the screw head before trying to break the screw free, as a loose fit will easily strip the screw head.
- ⓘ If the head of your screwdriver fits too loosely, find a bigger bit and file it down until it fits snugly before proceeding.
- ⓘ You do not necessarily have to follow steps 3-7 to remove the battery in order to replace the hard drive. However, it is recommended to remove all power sources from electronics before working on them.

## Step 4



- Remove the two exposed five-point Pentalobe screws along the top edge of the battery.

## Step 5



- Use the tip of a spudger to bend back the finger of the "Warning: Do not remove the battery" sticker while you remove the five-point Pentalobe screw hidden underneath.

## Step 6



- Lift the battery by its plastic pull tab and slide it away from the long edge of the upper case.

⚠ Do not try to completely remove the battery just yet.

## Step 7



- Tilt the battery back enough to access the battery cable connector.
- Pull the battery cable connector away from its socket on the logic board and remove the battery from the upper case.
- ☑ If you're installing a new battery, you should [calibrate](#) it as soon as possible.

To reassemble your device, follow these instructions in reverse order.