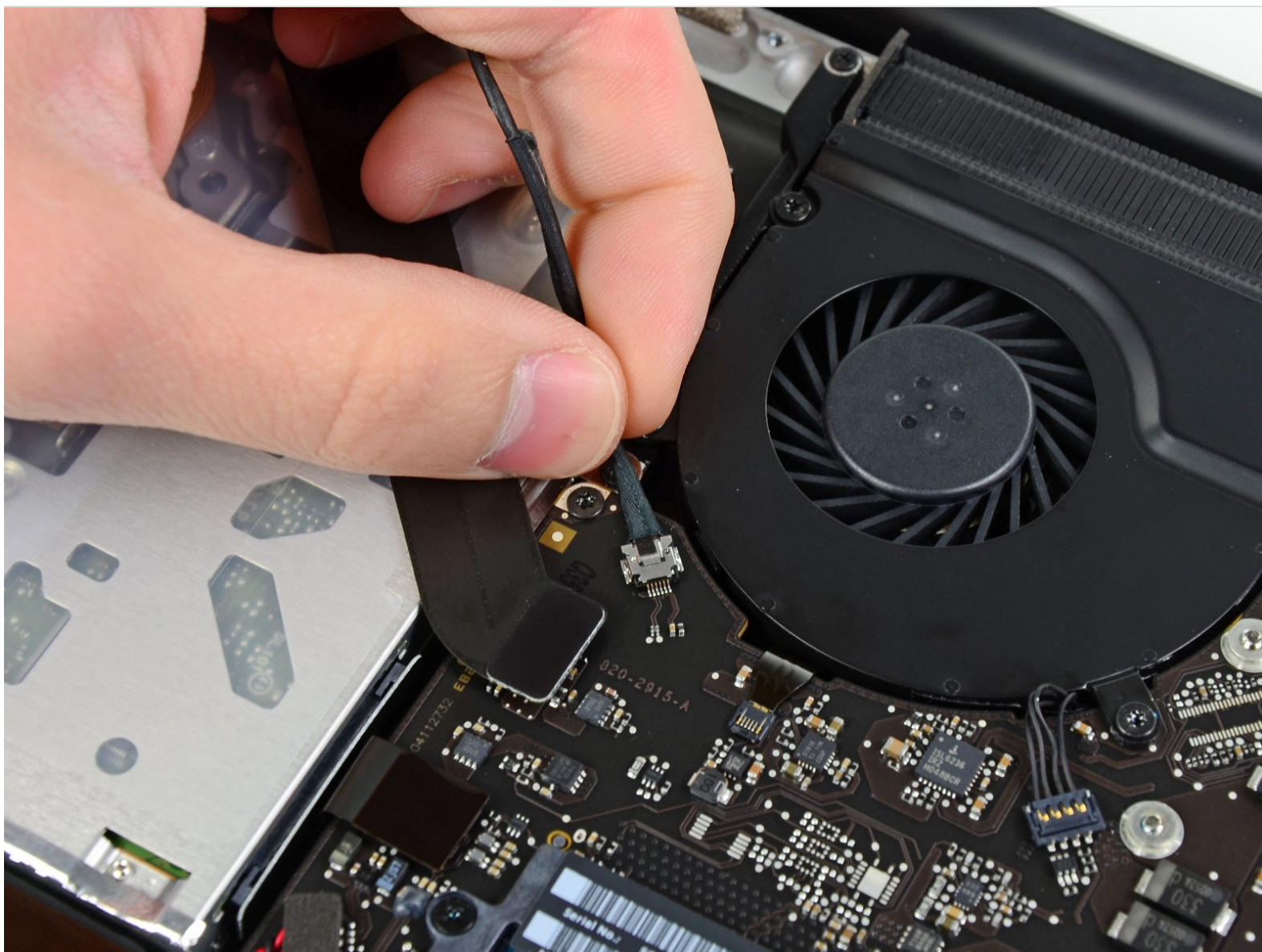




# MacBook Pro 15" Unibody Early 2011 AirPort/Bluetooth Board Assembly Replacement

AirPort/Bluetooth Board Assembly prereq.

Written By: Walter Galan



---

## INTRODUCTION

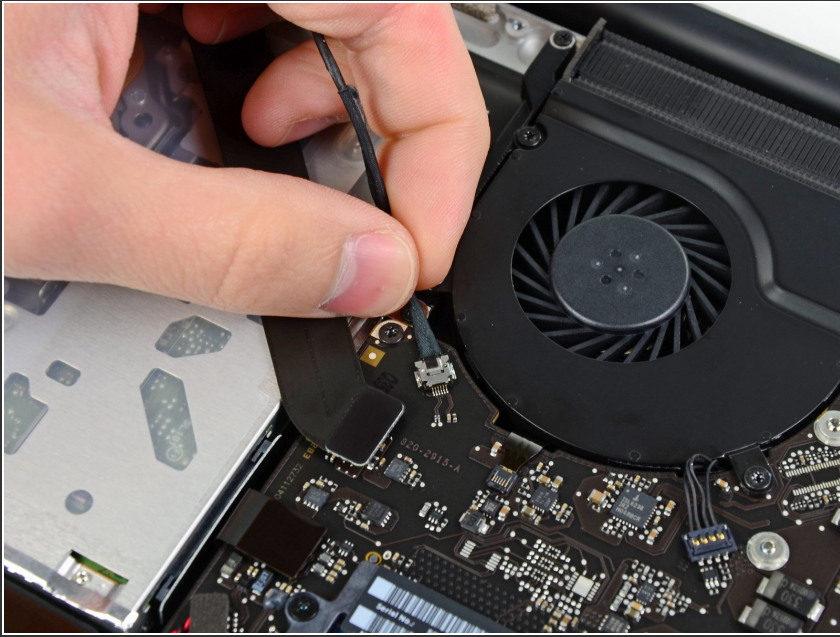
This guide is prereq only.



### TOOLS:

- [Phillips #00 Screwdriver](#) (1)
  - [Spudger](#) (1)
-

## Step 1 — AirPort/Bluetooth Board Assembly



- Pull the camera cable connector straight out of its socket on the logic board.
- ⓘ Pull the cable parallel to the face of the logic board toward the optical drive opening.

## Step 2



- Use the flat end of a spudger to carefully pry the AirPort/Bluetooth ribbon cable up off its socket on the logic board.



## Step 3



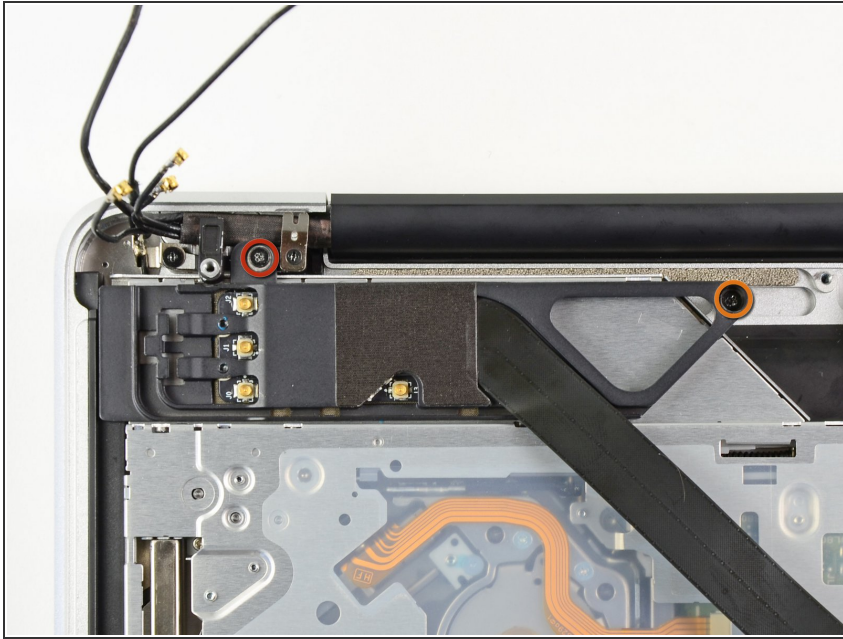
- Use the tip of a spudger to pry the four antenna connectors up from their sockets on the AirPort/Bluetooth board.

## Step 4



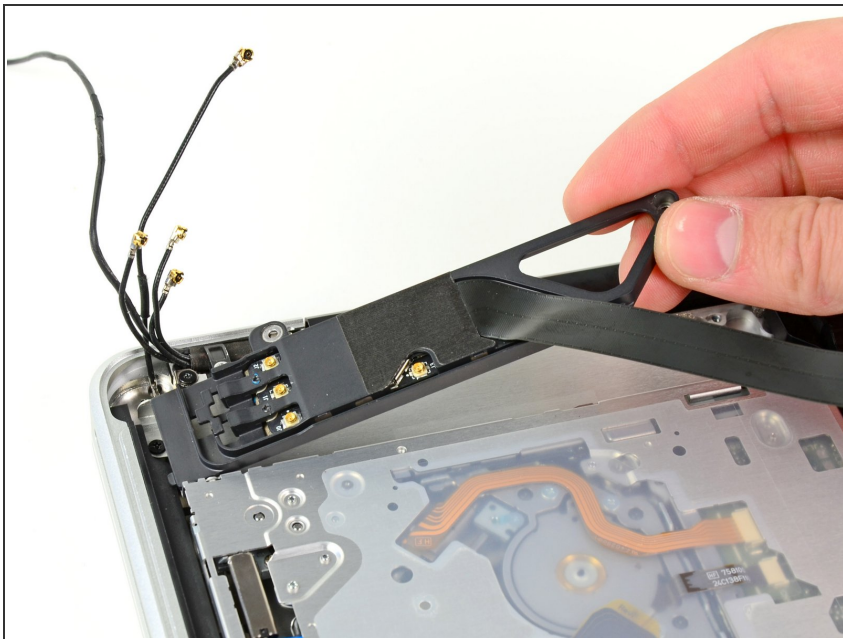
- De-route all four antenna cables from their channels in the AirPort/Bluetooth housing.
- De-route the camera cable from its channel in the AirPort/Bluetooth housing.

## Step 5



- Remove the following two screws securing the AirPort/Bluetooth assembly to the upper case:
  - One 8.6 mm Phillips screw
  - One 3.9 mm Phillips screw

## Step 6



- Remove the AirPort/Bluetooth assembly from the upper case, minding any cables that may get caught.

To reassemble your device, follow these instructions in reverse order.