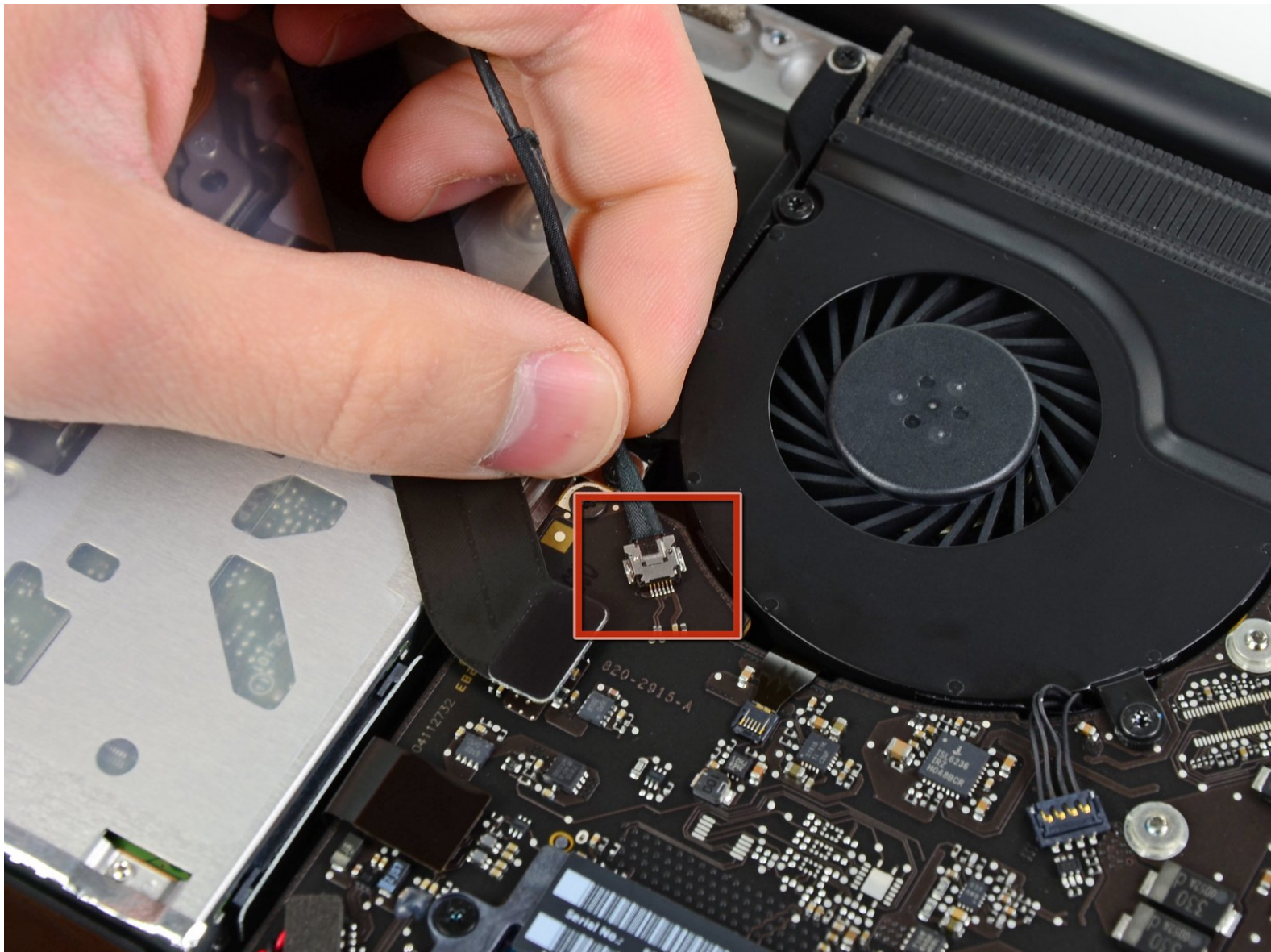




MacBook Pro 15" Unibody Early 2011 Optical Drive Replacement

Optical Drive replacement.

Written By: Walter Galan



INTRODUCTION

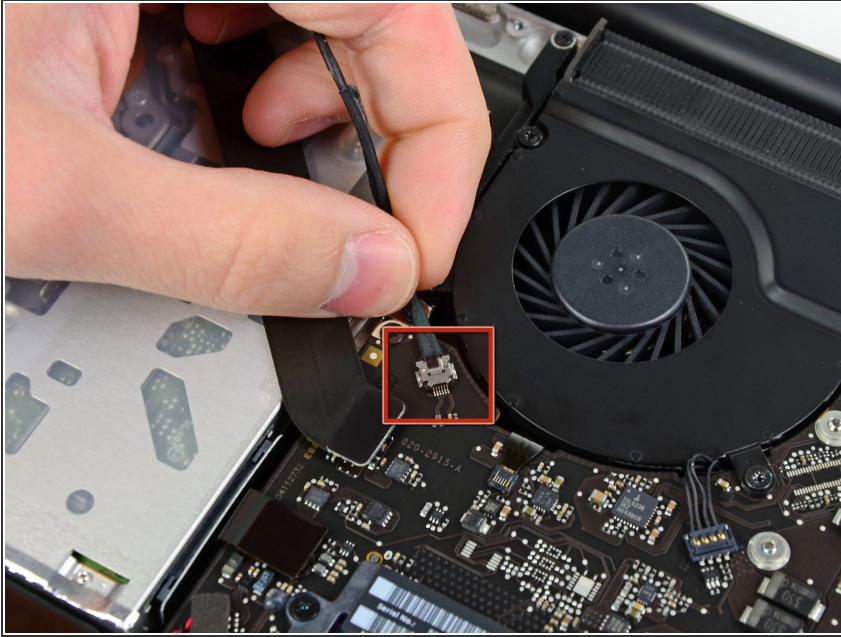
Optical Drive replacement.



TOOLS:

- [T6 Torx Screwdriver](#) (1)
 - [Phillips #00 Screwdriver](#) (1)
 - [Spudger](#) (1)
-

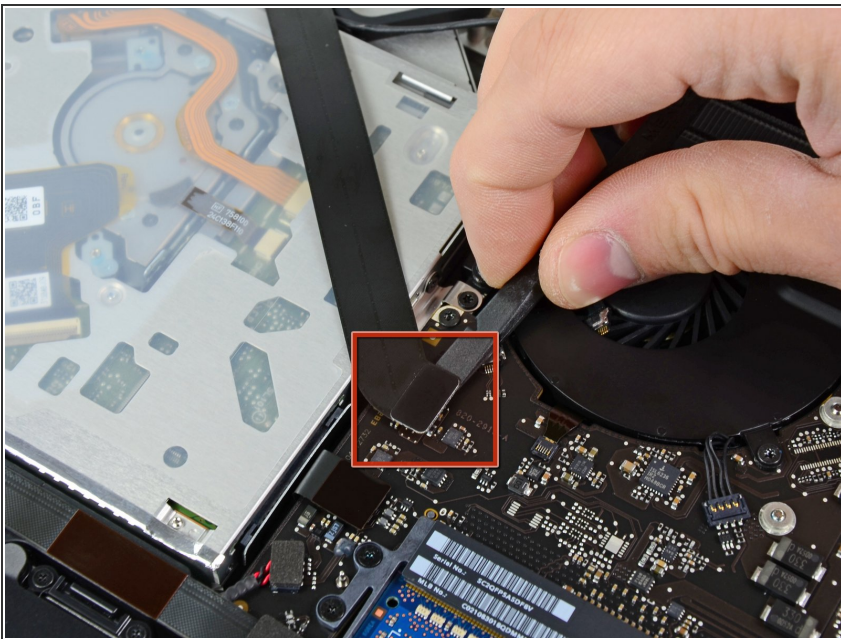
Step 1 — Optical Drive



- Disconnect the camera cable connector from its socket on the logic board.

⚠ Do not lift up on the cable as you disconnect it from the logic board. Pull the cable parallel to the face of the logic board.

Step 2



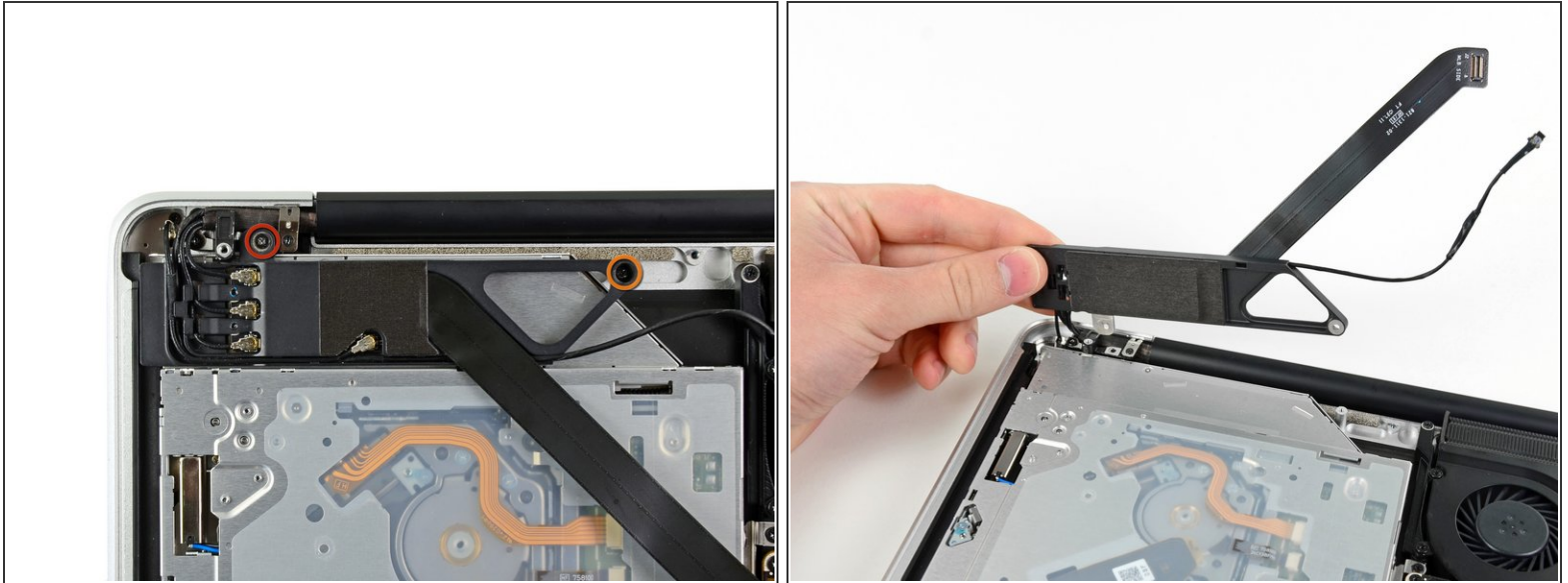
- Use the flat end of a spudger to pry the AirPort/Bluetooth connector up from its socket on the logic board.

Step 3



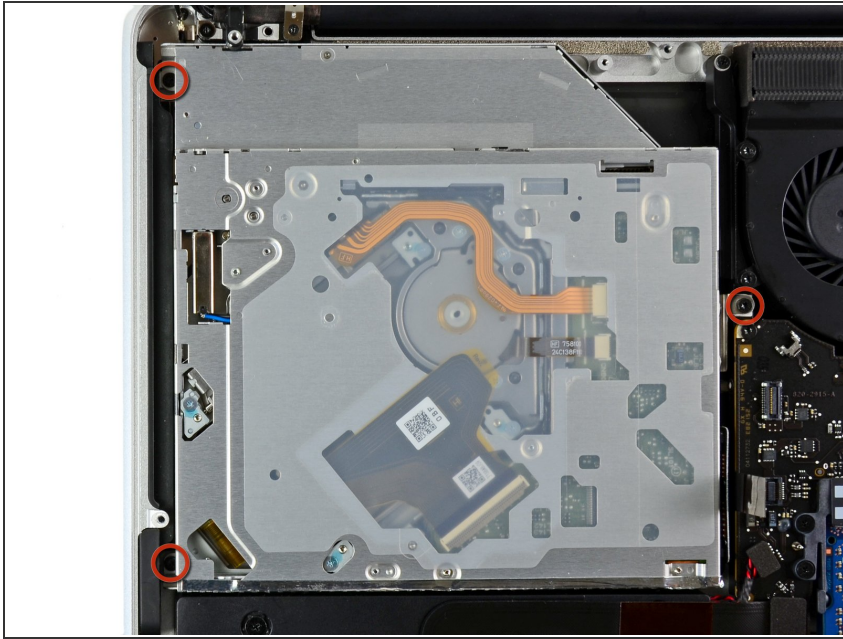
- Use the flat end of a spudger to pry the optical drive connector up from its socket on the logic board.

Step 4



- Remove following two screws:
 - ⚠ Take care, as these screws are unusually easy to strip. Apply firm pressure while unscrewing. Read comments before proceeding.
 - One 8.6 mm Phillips screw
 - One 3.9 mm Phillips screw
- Carefully rotate the AirPort/Bluetooth board housing (with AirPort/Antenna cables still attached) out of the lower case.

Step 5



- Remove the three 3.5 mm T6 Torx screws securing the optical drive to the upper case.

Step 6



- Lift the optical drive near its connector and pull it away from the upper case to remove it from the computer.

To reassemble your device, follow these instructions in reverse order.