



A close-up photograph showing a person's hand holding a 2.5-inch SATA solid-state drive (SSD). The drive is black with a silver metal frame. A screwdriver with a black handle is being used to remove a screw from the bottom edge of the drive. Two screws are highlighted with red circles: one on the bottom edge and one on the right edge. The drive's label includes various certification logos (CE, RoHS, REACH, etc.), a barcode, and technical specifications: "Hitachi Made in Thailand 12 TeraB, 120GB", "ECC 128b, 16MB, 16MB, 16MB, 16MB, 16MB", "SATA 6Gb/s, 15MB/s, 15MB/s, 15MB/s, 15MB/s, 15MB/s", "P1505A733 MLC-DAS11 1.00-08".

INTRODUCTION

When replacing your hard drive, you must transfer the Torx screws from the old drive to the new one.



TOOLS:

- [Phillips #00 Screwdriver](#) (1)
- [Spudger](#) (1)
- [T6 Torx Screwdriver](#) (1)



PARTS:

- [MacBook and MacBook Pro \(Non-Retina\) SSD Upgrade Bundle](#) (1)
 - [250 GB SSD](#) (1)
 - [500 GB SSD](#) (1)
 - [1 TB SSD](#) (1)
 - [500 GB SSD Hybrid 2.5" Hard Drive](#) (1)
- [Upgrade Kit](#)
This kit contains the drive and all tools needed.
 - [1 TB SSD Hybrid 2.5" Hard Drive](#) (1)
- [Upgrade Kit](#)
This kit contains the drive and all tools needed.
 - [500 GB 5400 RPM 2.5" Hard Drive](#) (1)
 - [1 TB 5400 RPM 2.5" Hard Drive](#) (1)
 - [MacBook Pro 15" Unibody \(Late 2008 Early 2009\) Hard Drive Bracket](#) (1)
 - [Universal Drive Adapter](#) (1)

Step 1 — Access Door



- With the case closed, place the Unibody top-side down on a flat surface.
- Depress the grooved side of the access door release latch enough to grab the free end. Lift the release latch until it is vertical.

Step 2



- The access door should now be raised enough to lift it up and out of the Unibody.

Step 3 — Battery



- ❗ Be sure the access door release latch is vertical before proceeding.
- Grab the translucent plastic tab and pull the battery up and out of the Unibody.
- If the latch is depressed it will lock the battery in place.

Step 4 — Hard Drive



- Remove the single Phillips screw securing the hard drive bracket to the upper case.
- ★ This screw is captive to the hard drive bracket.

Step 5



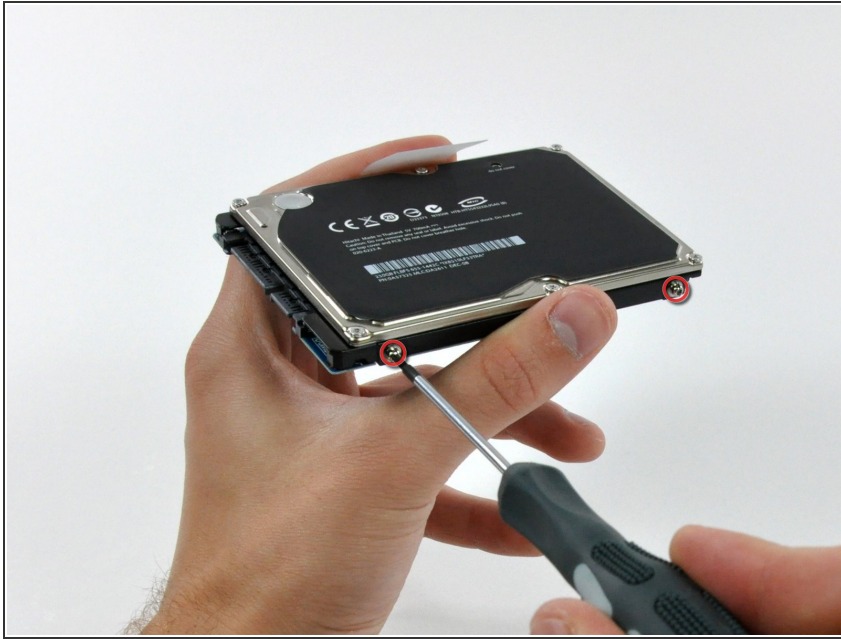
- Lift the hard drive by its pull tab enough to grab and remove the retaining bracket.
- Lift the hard drive out of the upper case, minding the cable attaching it to the computer.

Step 6



- Remove the hard drive from its cable by pulling the cable connector straight away from the drive.

Step 7 — Hard Drive



- Remove two T6 Torx screws from each side of the hard drive (four screws total).
- ★ You'll need to transfer these screws to your new hard drive if you're changing drives.
- ⓘ If you are installing a new hard drive, we have an [OS X install guide](#) to get you up and running.

To reassemble your device, follow these instructions in reverse order.