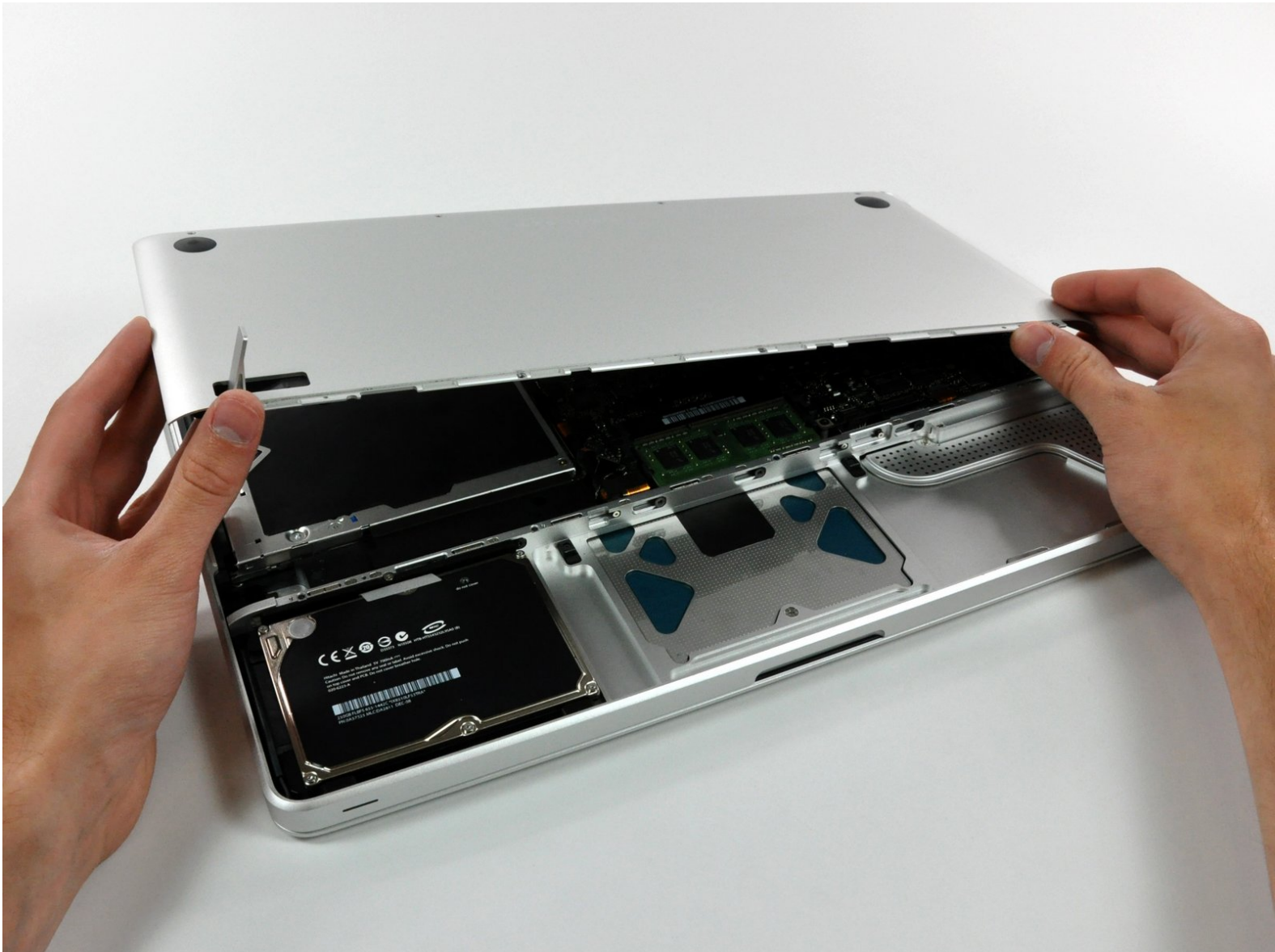




# MacBook Pro 15" Unibody Late 2008 and Early 2009 Lower Case Replacement

Replace the aluminum bottom case in a MacBook Pro Unibody.

Written By: Walter Galan



# INTRODUCTION

Replace the aluminum bottom case in a MacBook Pro Unibody.



## TOOLS:

- [Phillips #00 Screwdriver](#) (1)



## PARTS:

- [MacBook Pro 15" Unibody \(Late 2008/Early 2009\) Lower Case](#) (1)

## Step 1 — Access Door



- With the case closed, place the Unibody top-side down on a flat surface.
- Depress the grooved side of the access door release latch enough to grab the free end. Lift the release latch until it is vertical.

## Step 2



- The access door should now be raised enough to lift it up and out of the Unibody.

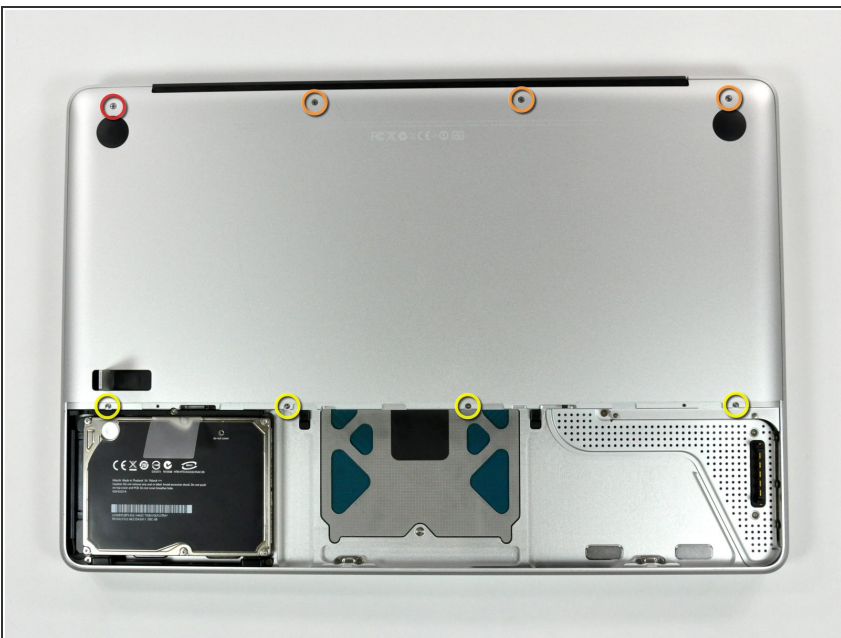


## Step 3 — Battery



- ❗ Be sure the access door release latch is vertical before proceeding.
- Grab the translucent plastic tab and pull the battery up and out of the Unibody.
- If the latch is depressed it will lock the battery in place.

## Step 4 — Lower Case



- Remove the following eight screws securing the lower case to the chassis:
  - One 5.4 mm Phillips screw.
  - Three 14 mm Phillips screws.
  - Four 3.5 mm Phillips screws.

## Step 5



- Using both hands, lift and remove the lower case off the upper case.

To reassemble your device, follow these instructions in reverse order.