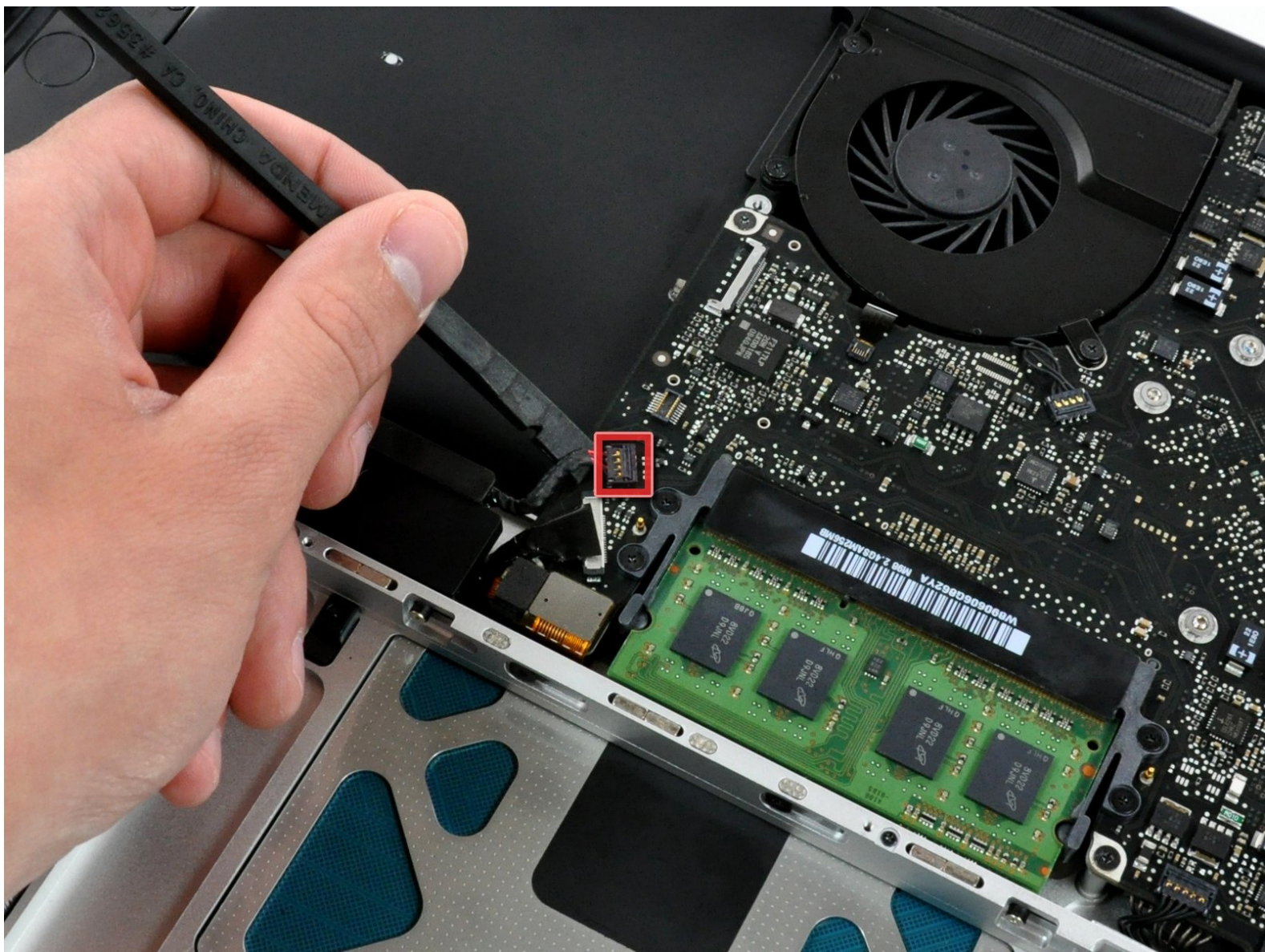






MacBook Pro 15" Unibody Late 2008 and Early 2009 Subwoofer & Right Speaker Replacement

Written By: Walter Galan

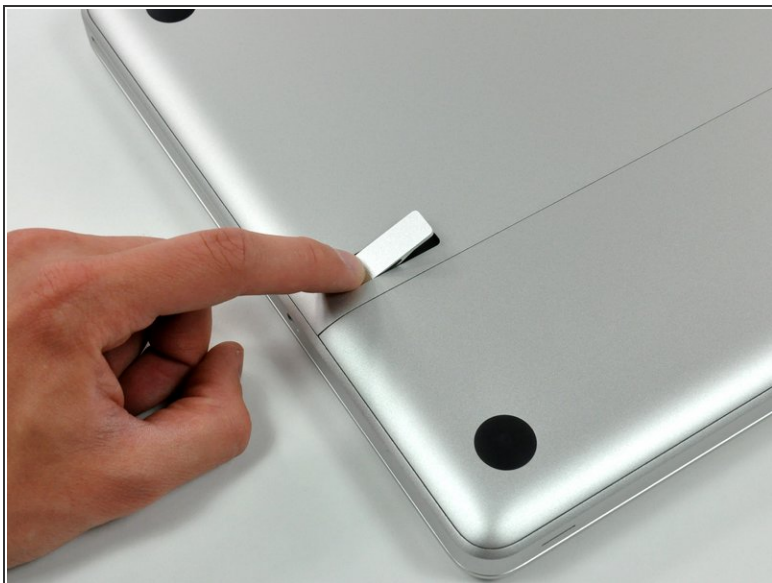


INTRODUCTION

Restore sound to your laptop by replacing the subwoofer and right speaker.

<div> TOOLS:</div> <div><ul style="list-style-type: none">• Phillips #00 Screwdriver (1)• Spudger (1)</div>	<div><div></div> PARTS:</div> <div><ul style="list-style-type: none">• MacBook Pro 15" Unibody (Late 2008/Early 2009) Subwoofer/Right Speaker (1)</div>
--	---

Step 1 — Access Door



- With the case closed, place the Unibody top-side down on a flat surface.
- Depress the grooved side of the access door release latch enough to grab the free end. Lift the release latch until it is vertical.

Step 2



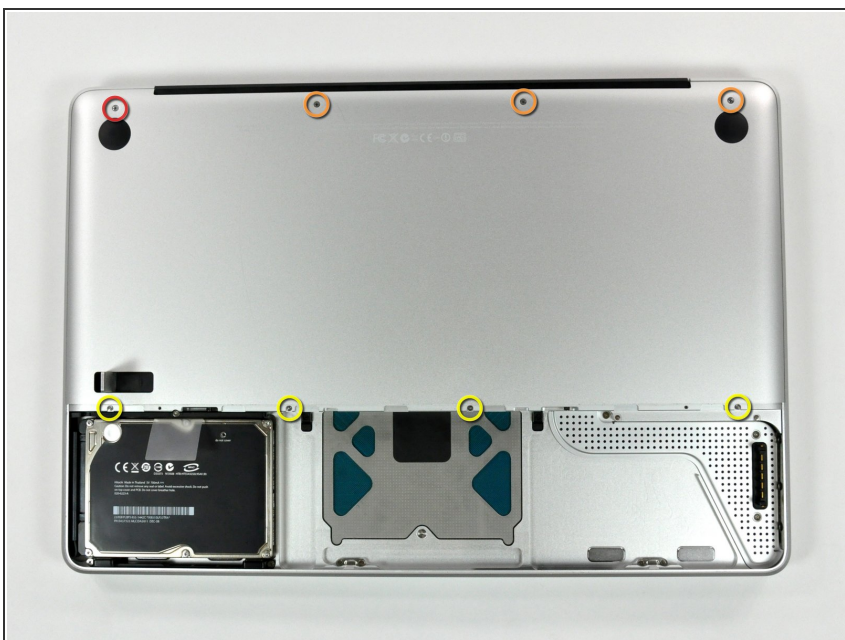
- The access door should now be raised enough to lift it up and out of the Unibody.

Step 3 — Battery



- **i** Be sure the access door release latch is vertical before proceeding.
- Grab the translucent plastic tab and pull the battery up and out of the Unibody.
- If the latch is depressed it will lock the battery in place.

Step 4 — Lower Case



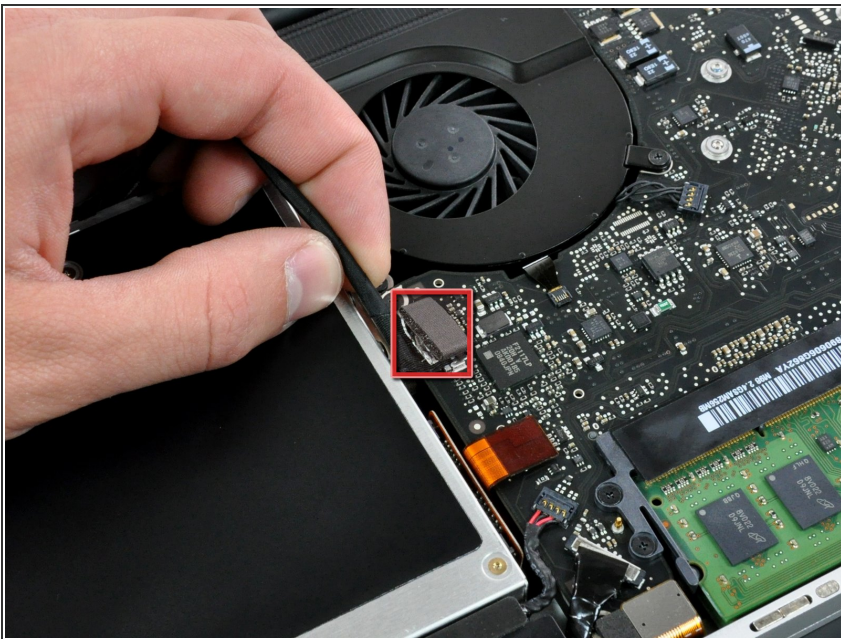
- Remove the following eight screws securing the lower case to the chassis:
 - One 5.4 mm Phillips screw.
 - Three 14 mm Phillips screws.
 - Four 3.5 mm Phillips screws.

Step 5



- Using both hands, lift and remove the lower case off the upper case.

Step 6 — Optical Drive



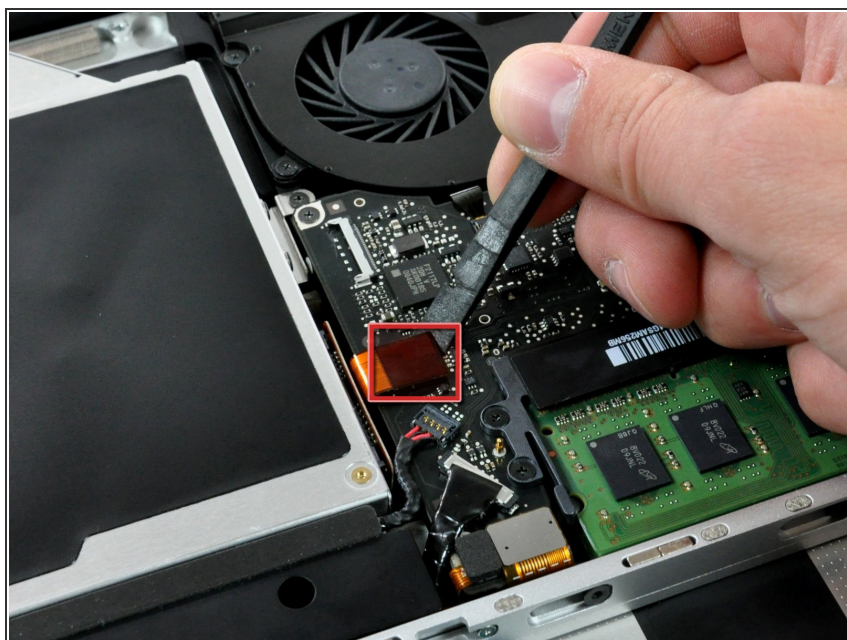
- Disconnect the camera cable by pulling the male end straight away from its socket.

Step 7



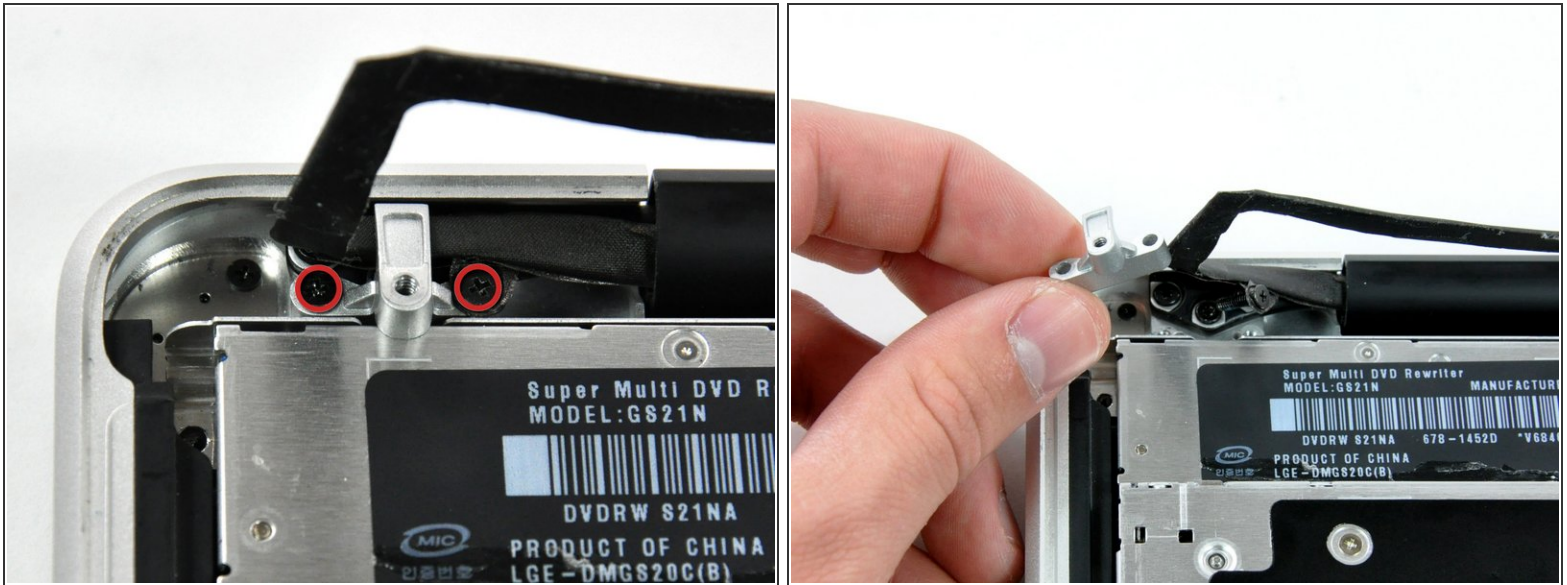
- Deroute the camera data cable from the channel in the optical drive.

Step 8



- Use a spudger to pry the optical drive connector straight up off the logic board.

Step 9



- Remove two 8 mm Phillips screws securing the camera cable bracket to the upper case.
- ⓘ The rightmost screw may remain captive in the camera cable.
- Lift the camera cable bracket out from the upper case.

Step 10



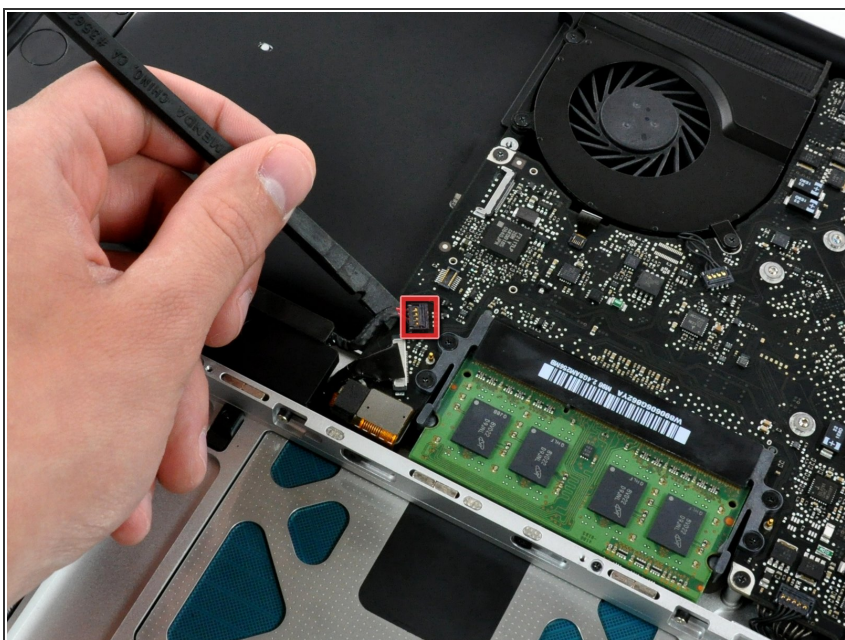
- Remove the following three Phillips screws securing the optical drive to the upper case:
 - One 3.5 mm Phillips screw.
 - Two 2.5 mm Phillips screws.

Step 11



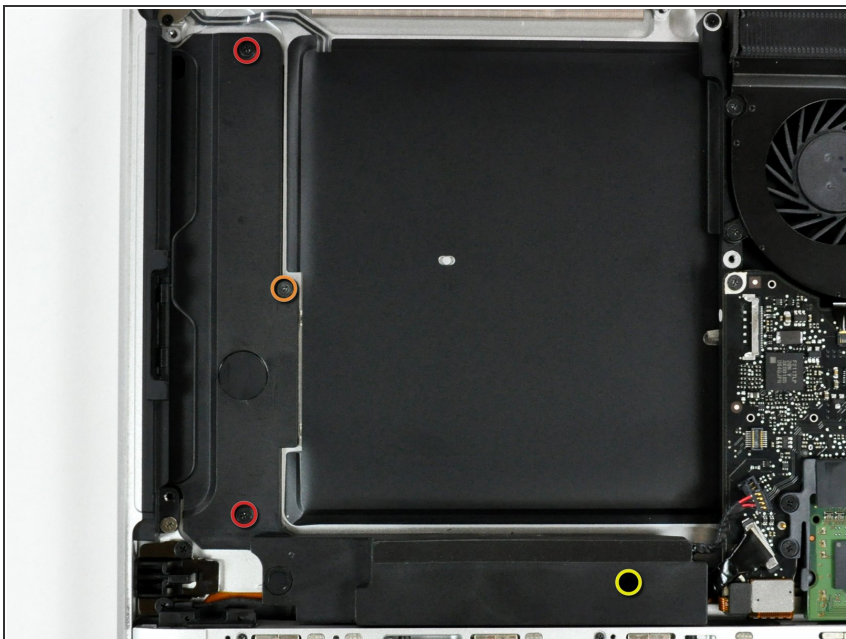
- Lift the optical drive from its left edge and pull it out of the computer.

Step 12 — Subwoofer & Right Speaker



- Using the flat end of a spudger, pry the subwoofer connector straight up off the logic board.

Step 13



- Remove the following four screws securing the subwoofer and right speaker to the upper case:
 - Two 3.2 mm Phillips screws.
 - One 2.6 mm Phillips screw.
 - One 5 mm Phillips screw.

Step 14



- Lift the subwoofer and right speaker assembly out of the upper case.

To reassemble your device, follow these instructions in reverse order.