



MacBook Pro 15" Unibody Late 2011 Display Replacement

Replace a broken display assembly on your Late 2011 MacBook Pro 15" Unibody.

Written By: Miroslav Djuric



INTRODUCTION

Replacing a broken display assembly gives you a new LCD, front glass, display enclosure, iSight camera, and new AirPort antennas.



TOOLS:

- [Phillips #00 Screwdriver](#) (1)
- [Spudger](#) (1)
- [T6 Torx Screwdriver](#) (1)



PARTS:

- [MacBook Pro 15" Unibody \(Early 2011/Late 2011\) Display Assembly](#) (1)
- [MacBook Pro 15" Unibody \(Late 2008 through Late 2011\) LCD Panel](#) (1)
- [MacBook Pro 15" Unibody LVDS Display Cable](#) (1)

Step 1 — Lower Case



- Remove the following ten screws securing the lower case to the upper case:
 - Three 13.5 mm (14.1 mm) Phillips screws.
 - Seven 3 mm Phillips screws.

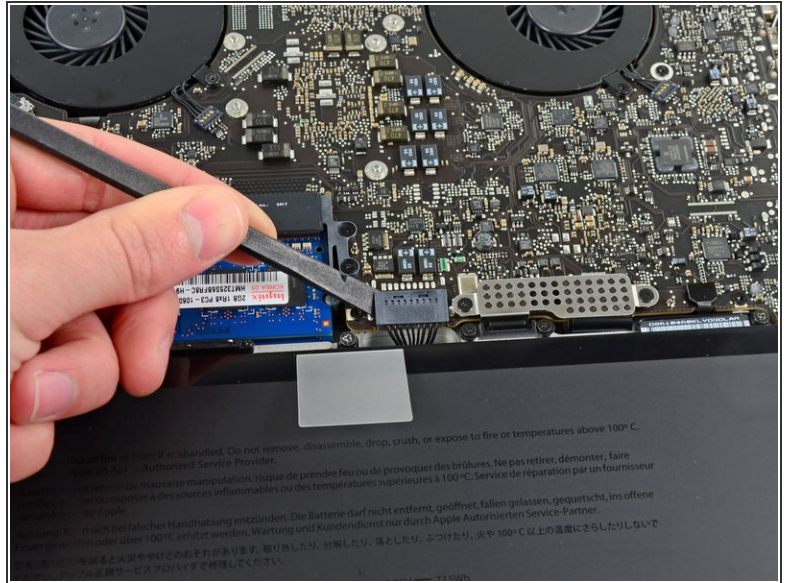
★ When removing these screws, note how they come out at a slight angle. They must be reinstalled the same way.

Step 2



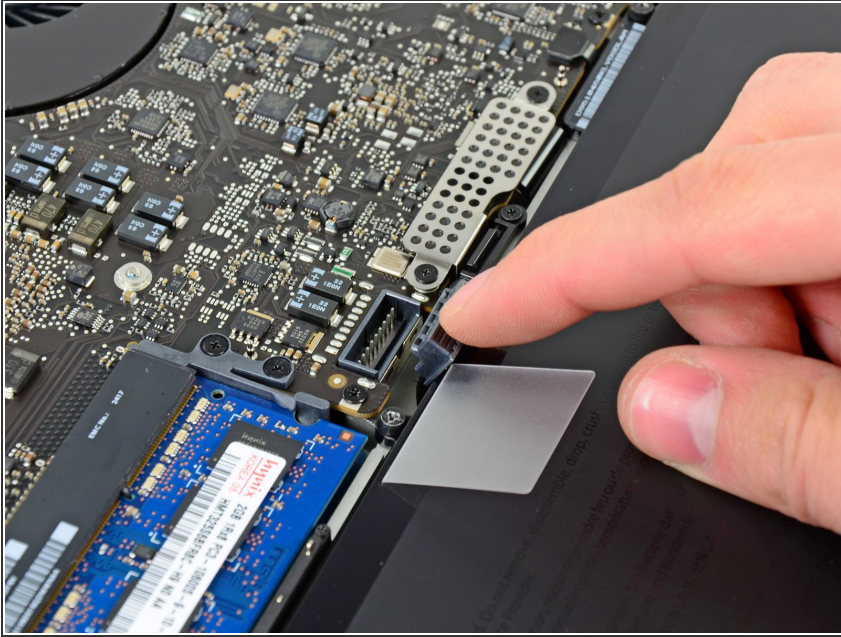
- Using both hands, lift the lower case near the vent to pop it off two clips securing it to the upper case.
- Remove the lower case and set it aside.

Step 3 — Battery Connector



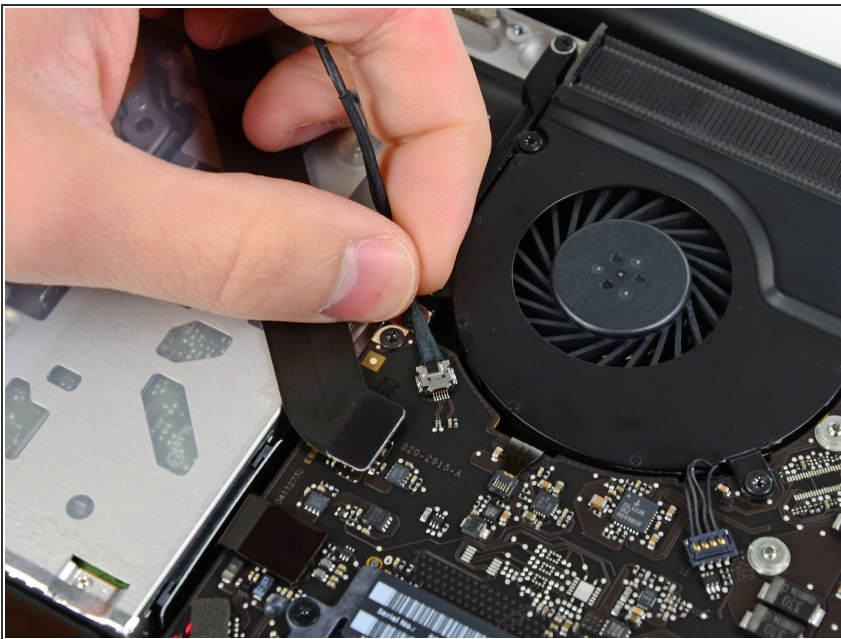
- ☑ For certain repairs (e.g. hard drive), disconnecting the battery connector is not necessary but it prevents any accidental shorting of electronics on the motherboard. If you do not disconnect the battery connector, please be careful as parts of the motherboard might be electrified.
- Use the edge of a spudger to pry the battery connector upwards from its socket on the logic board.
- ℹ It is useful to pry upward on both short sides of the connector to "walk" it out of its socket.

Step 4



- Bend the battery cable slightly away from its socket on the logic board so it does not accidentally connect itself while you work.

Step 5 — AirPort/Bluetooth Board Assembly



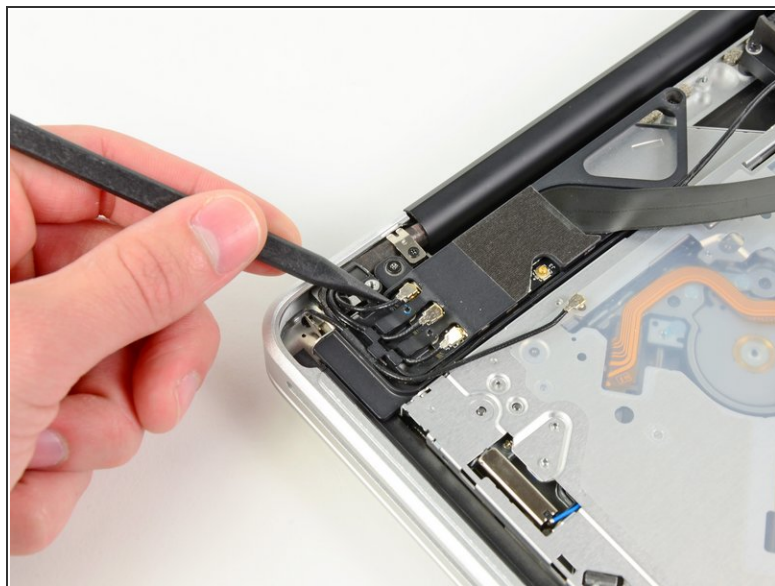
- Pull the camera cable connector straight out of its socket on the logic board.
- ⓘ Pull the cable parallel to the face of the logic board toward the optical drive opening.

Step 6



- Use the flat end of a spudger to carefully pry the AirPort/Bluetooth ribbon cable up off its socket on the logic board.

Step 7



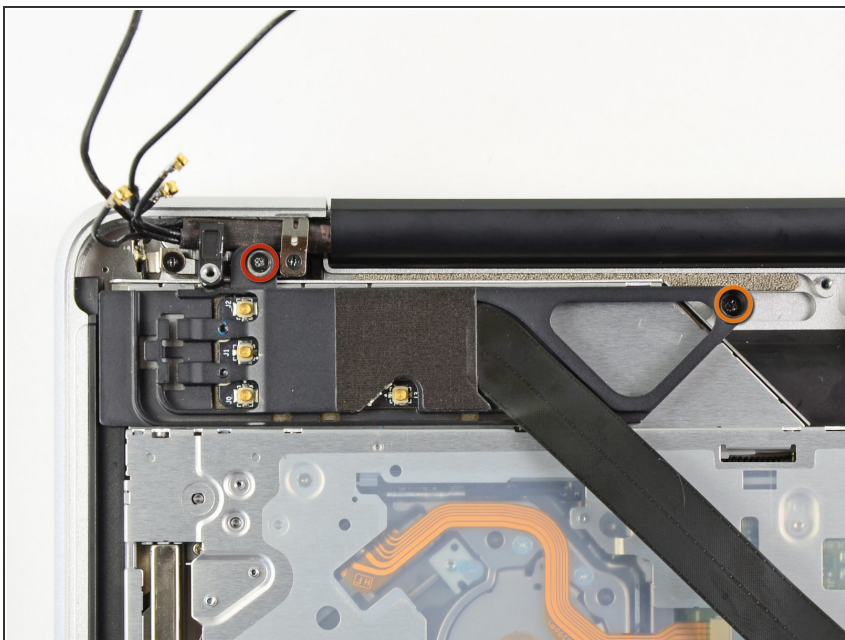
- Use the tip of a spudger to pry the four antenna connectors up from their sockets on the AirPort/Bluetooth board.

Step 8



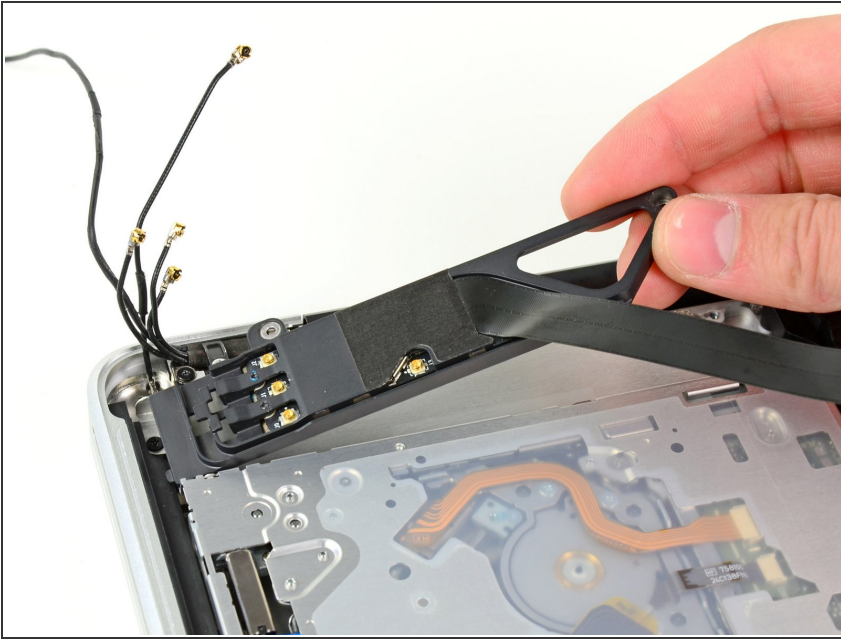
- De-route all four antenna cables from their channels in the AirPort/Bluetooth housing.
- De-route the camera cable from its channel in the AirPort/Bluetooth housing.

Step 9



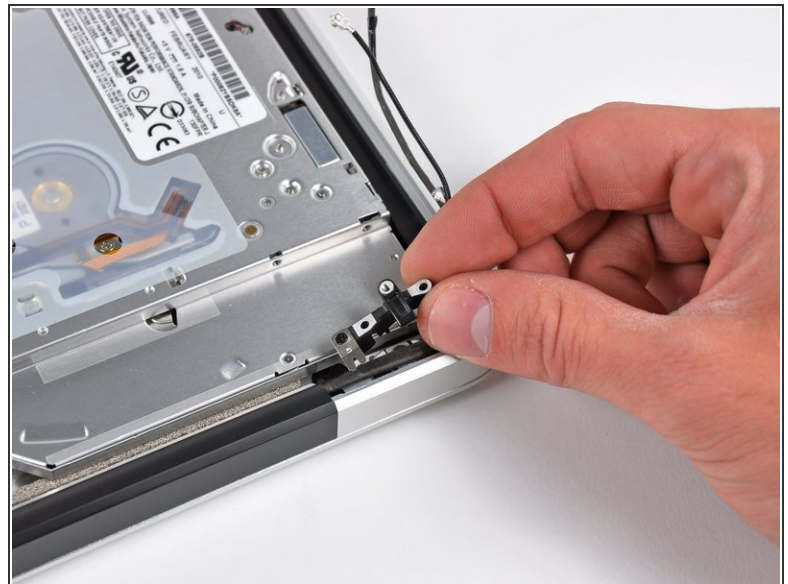
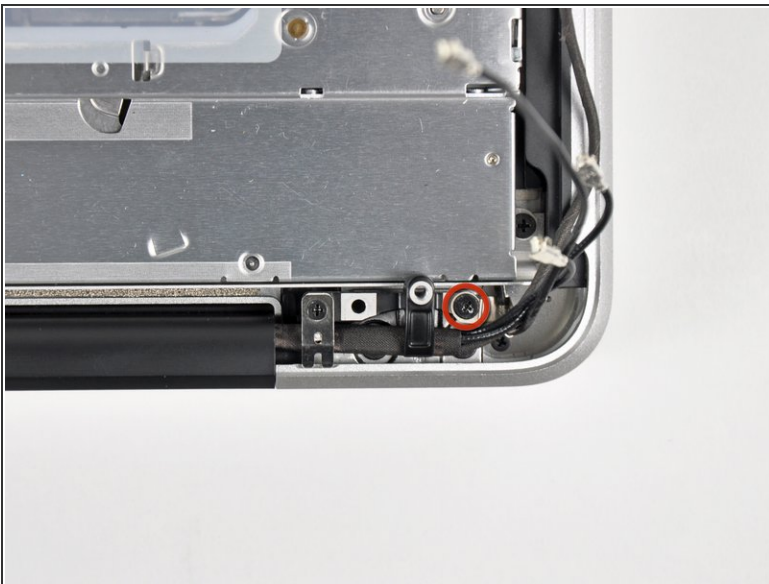
- Remove the following two screws securing the AirPort/Bluetooth assembly to the upper case:
 - One 8.6 mm Phillips screw
 - One 3.9 mm Phillips screw

Step 10



- Remove the AirPort/Bluetooth assembly from the upper case, minding any cables that may get caught.

Step 11 — Display



- Remove the 8.6 mm Phillips screw securing the antenna/camera cable retainer to the upper case.
- Remove the antenna/camera cable retainer from the upper case.
- ☑ During reassembly, place the nearby metal grounding tab on top of the hole that the Phillips screw goes into, and then install the screw.

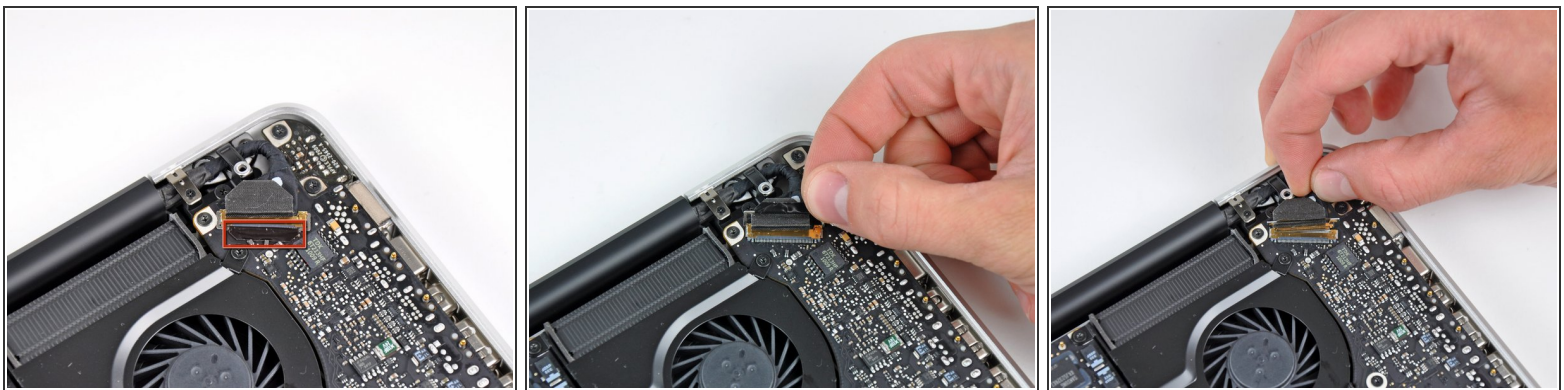
This document was generated on 2019-09-22 06:52:07 PM (MST).

Step 12



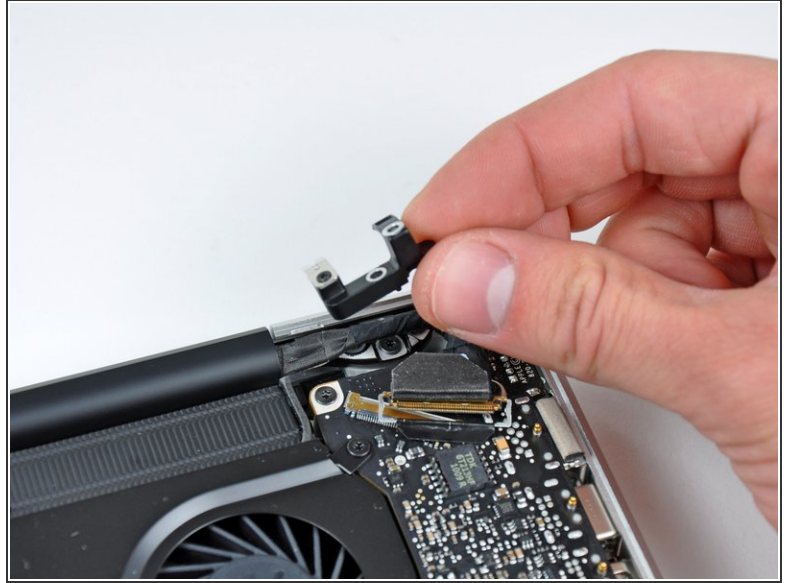
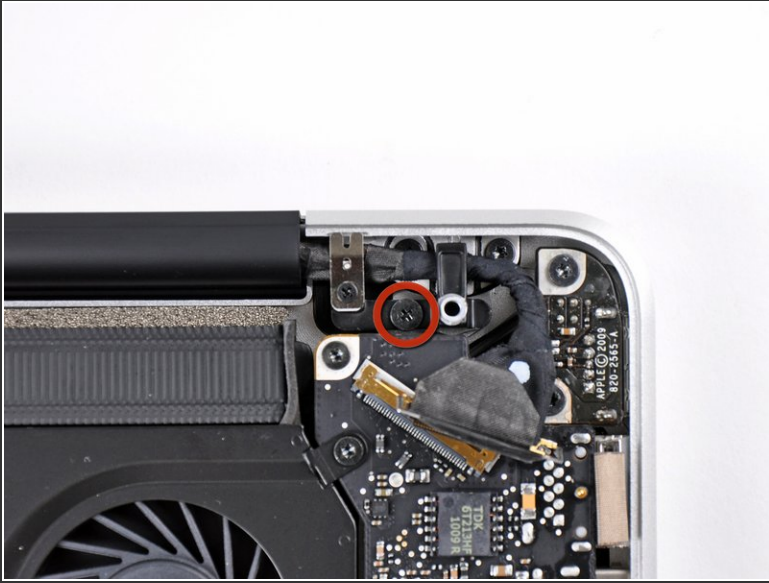
- Remove two of the three 6 mm T6 Torx screws securing the right side of the display to the upper case.
- ⓘ We purposely have you leave one screw attaching the display to the upper case to aid in future steps.
- ✦ Before reinstalling the screw nearest to the corner of the case, make sure the nearby metal grounding tab doesn't get caught under the hinge.

Step 13



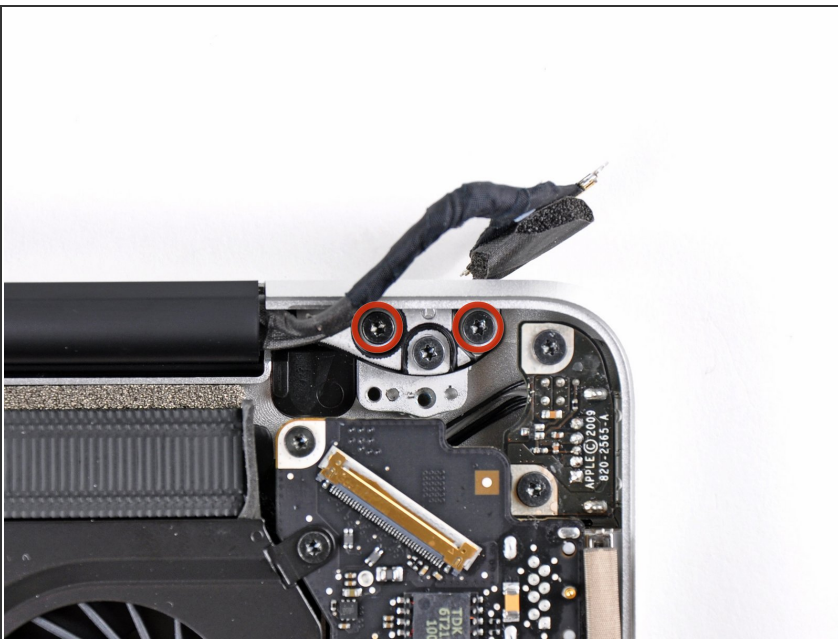
- Grab the plastic pull tab secured to the display data cable lock and rotate it up and over the connector, toward the DC-In side of the computer.
- Pull the display data cable straight back (not up) out of its socket on the logic board.
- ⓘ Do not lift up on the display data cable, as its socket is very fragile. Pull the cable parallel to the face of the logic board.

Step 14



- Remove the 8.6 mm Phillips screw securing the display data cable retainer to the upper case.
- Remove the display data cable retainer from the upper case.

Step 15



- Remove two of the three 6 mm T6 Torx screws securing the left side of the display to the upper case.
- ⓘ We purposely have you leave one screw attaching the display to the upper case to aid in future steps.

- ✦ The display assembly and MacBook body can be subtly misaligned on reassembly. With all six T6 Torx screws in place and the notebook closed, check for alignment. Loosen these six screws to correct the alignment if necessary, and then re-tighten them.


Step 16



- Open your MacBook Pro so the display is perpendicular to the upper case.
- Place your opened MacBook Pro on a table as pictured.
- While holding the display and upper case together with your left hand, remove the remaining T6 Torx screw from the upper display bracket.

Step 17



 Be sure to hold the display and upper case together with your left hand. Failure to do so may cause the freed display/upper case to fall, potentially damaging each component.

- Remove the last remaining T6 Torx screw securing the display to the upper case.

Step 18



- Grab the upper case with your right hand and rotate it slightly toward the top of the display so the upper display bracket clears the edge of the upper case.
- Rotate the display slightly away from the upper case.
- Lift the display up and away from the upper case, minding any brackets or cables that may get caught.

To reassemble your device, follow these instructions in reverse order.

This document was generated on 2019-09-22 06:52:07 PM (MST).

