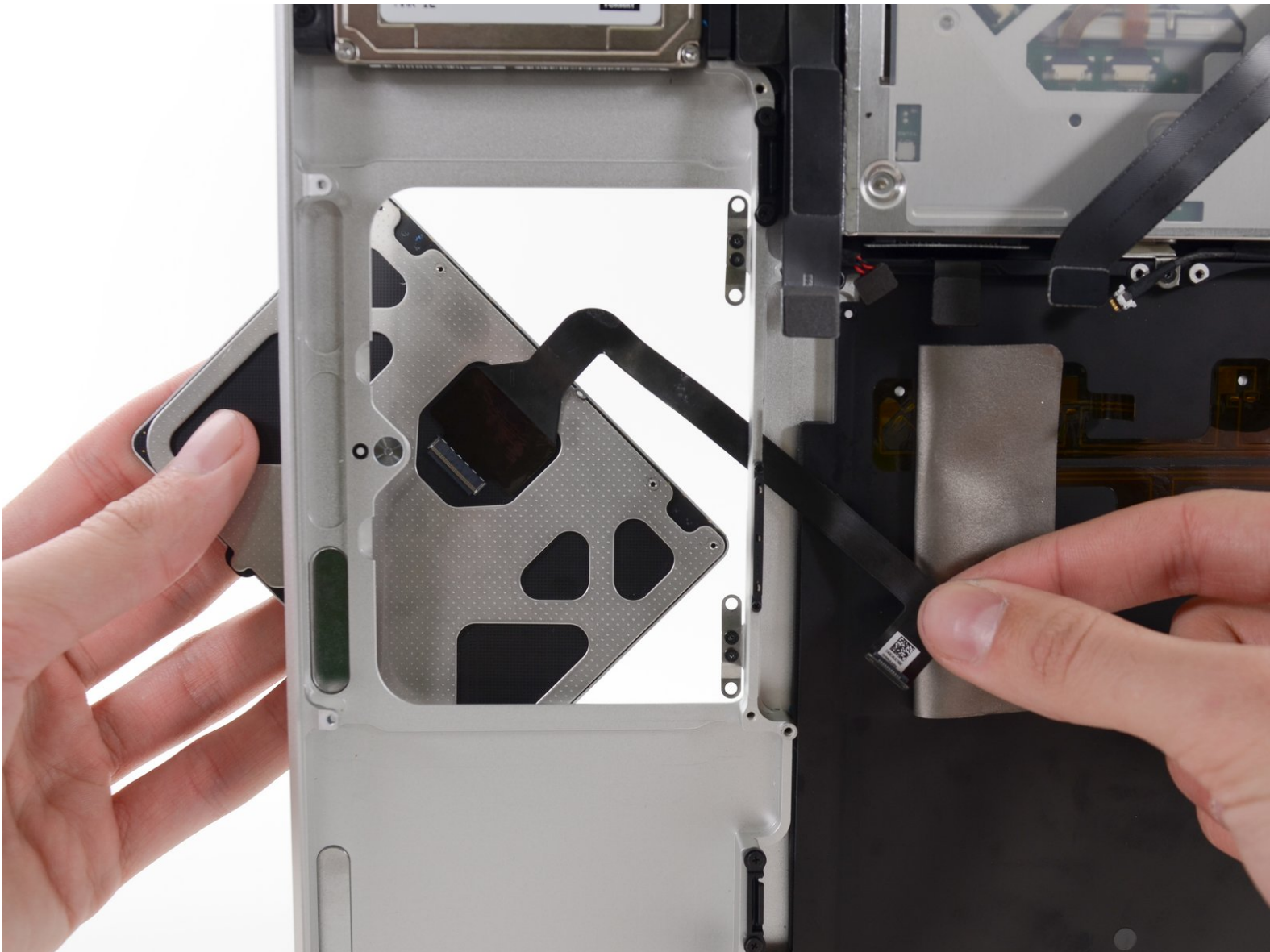




# MacBook Pro 15" Unibody Late 2011 Trackpad Replacement

MacBook Pro 15" trackpad replacement.

Written By: Andrew Optimus Goldheart



# INTRODUCTION

Has your MacBook Pro lost its magic touch? Bring it back with a new trackpad.



## TOOLS:

- [Phillips #00 Screwdriver](#) (1)
- [Spudger](#) (1)
- [T6 Torx Screwdriver](#) (1)
- [Tri-point Y0 Screwdriver](#) (1)



## PARTS:

- [MacBook Pro 15" Unibody \(Mid 2009 to Mid 2012\) Trackpad](#) (1)
- [MacBook Pro Unibody \(Mid 2009 through Mid 2012\) Trackpad Mounting Screws](#) (1)

## Step 1 — Lower Case



- Remove the following ten screws securing the lower case to the upper case:
  - Three 13.5 mm (14.1 mm) Phillips screws.
  - Seven 3 mm Phillips screws.

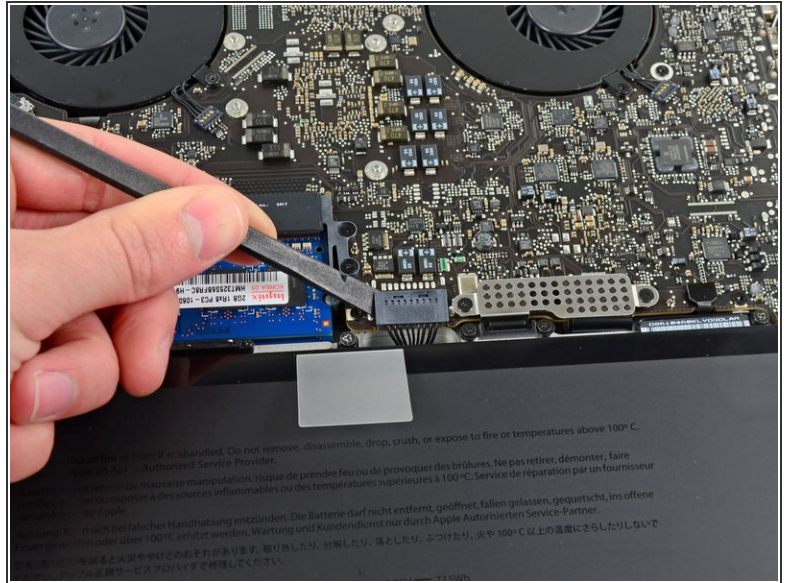
★ When removing these screws, note how they come out at a slight angle. They must be reinstalled the same way.

## Step 2



- Using both hands, lift the lower case near the vent to pop it off two clips securing it to the upper case.
- Remove the lower case and set it aside.

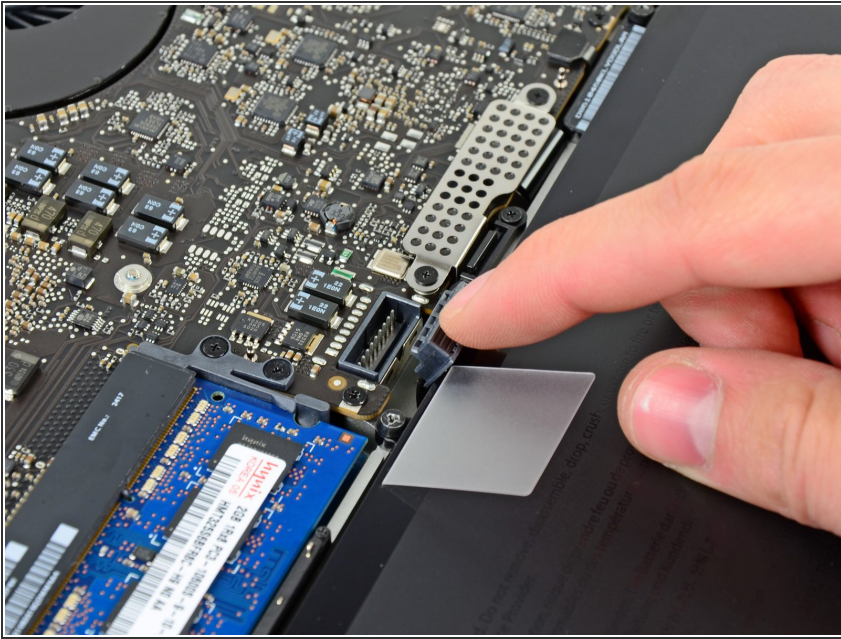
## Step 3 — Battery Connector



- ✦ For certain repairs (e.g. hard drive), disconnecting the battery connector is not necessary but it prevents any accidental shorting of electronics on the motherboard. If you do not disconnect the battery connector, please be careful as parts of the motherboard might be electrified.
- Use the edge of a spudger to pry the battery connector upwards from its socket on the logic board.
- i It is useful to pry upward on both short sides of the connector to "walk" it out of its socket.

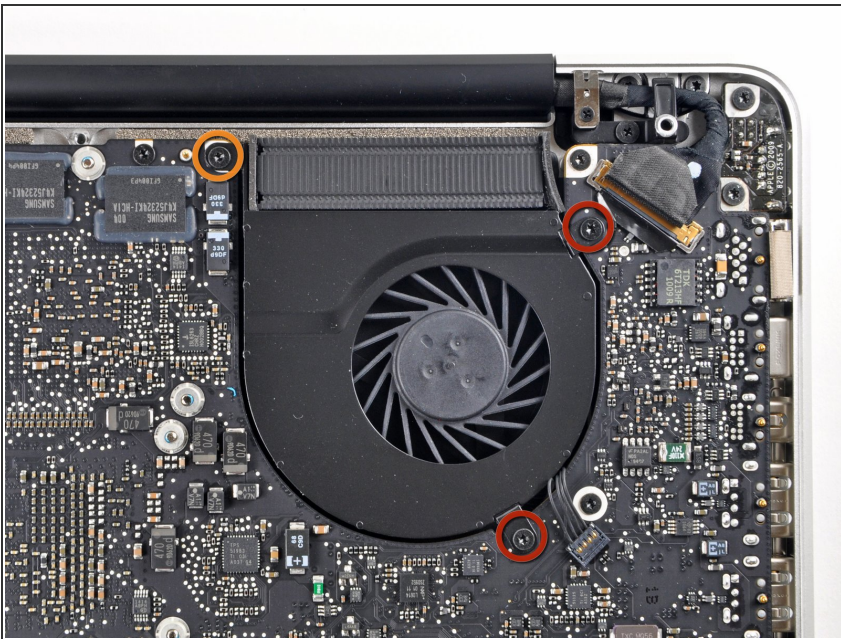


## Step 4



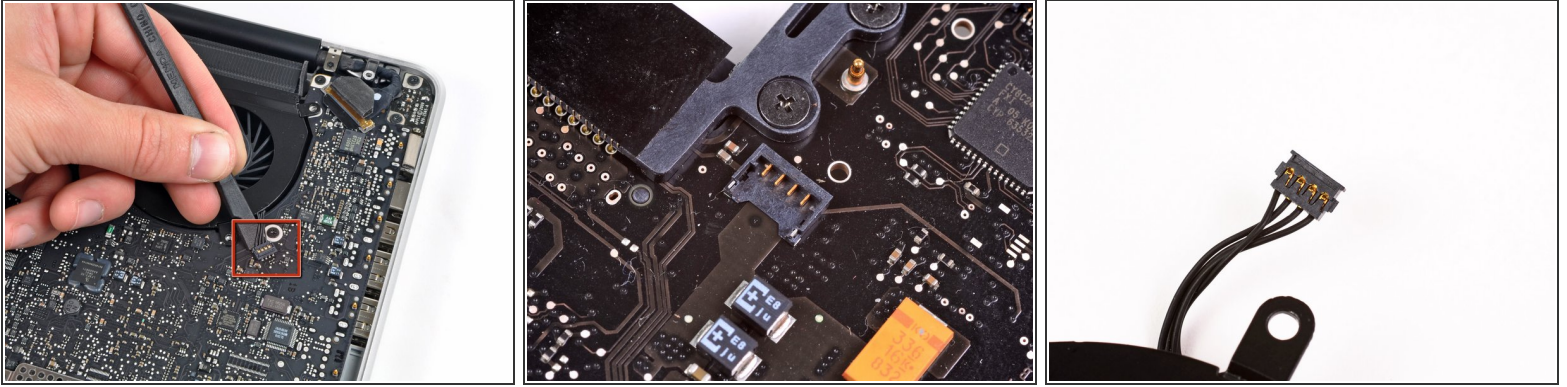
- Bend the battery cable slightly away from its socket on the logic board so it does not accidentally connect itself while you work.

## Step 5 — Left Fan



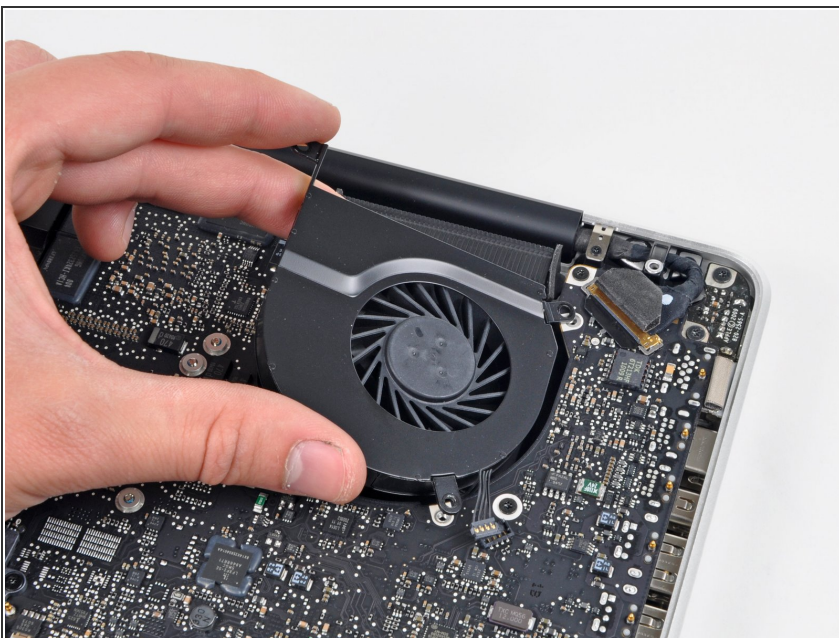
- Remove the following three screws securing the left fan to the logic board:
  - Two 3.5 mm T6 Torx screws.
  - One 4.2 mm T6 Torx screw.

## Step 6



- Use the flat end of a spudger to disconnect the left fan connector from the logic board.
- ⓘ It is useful to twist the spudger axially from beneath the fan cable wires to release the connector.
- ⚠ The fan socket and the fan connector can be seen in the second and third pictures. Be careful not to break the plastic fan socket off the logic board as you use your spudger to lift the fan connector straight up and out of its socket.
- ⓘ The layout of the logic board shown in the second picture may look slightly different than your machine but the fan socket is the same.

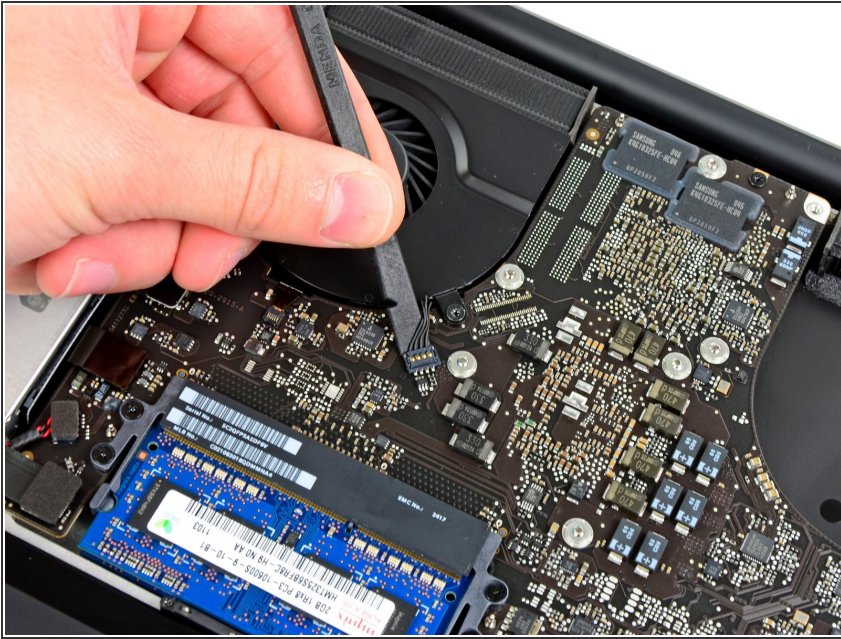
## Step 7



- Lift the left fan out of the upper case.

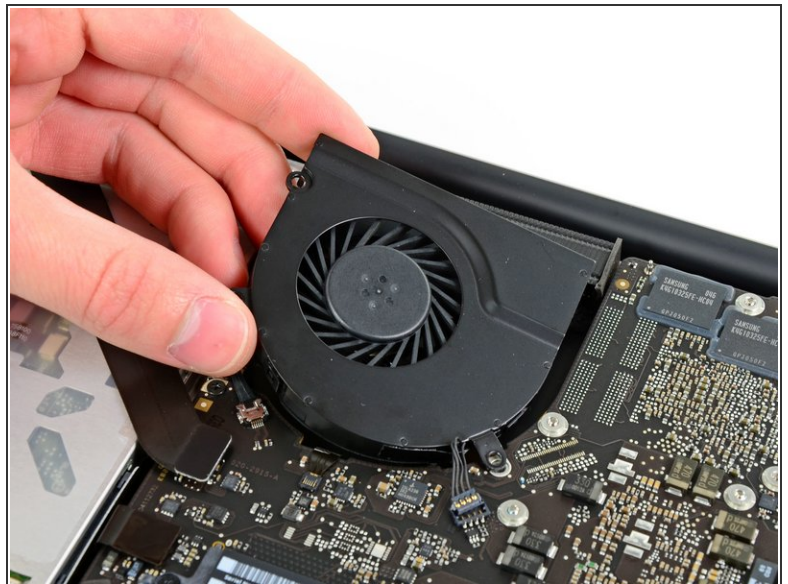


## Step 8 — Logic Board



- Use the flat end of a spudger to lift the right fan connector out of its socket on the logic board.
- ⓘ It is useful to twist the spudger axially from beneath the fan cable wires to release the connector.

## Step 9



- Remove the three 3.4 mm (3.1 mm) T6 Torx screws securing the right fan to the logic board.
- Lift the right fan out of its opening in the logic board.

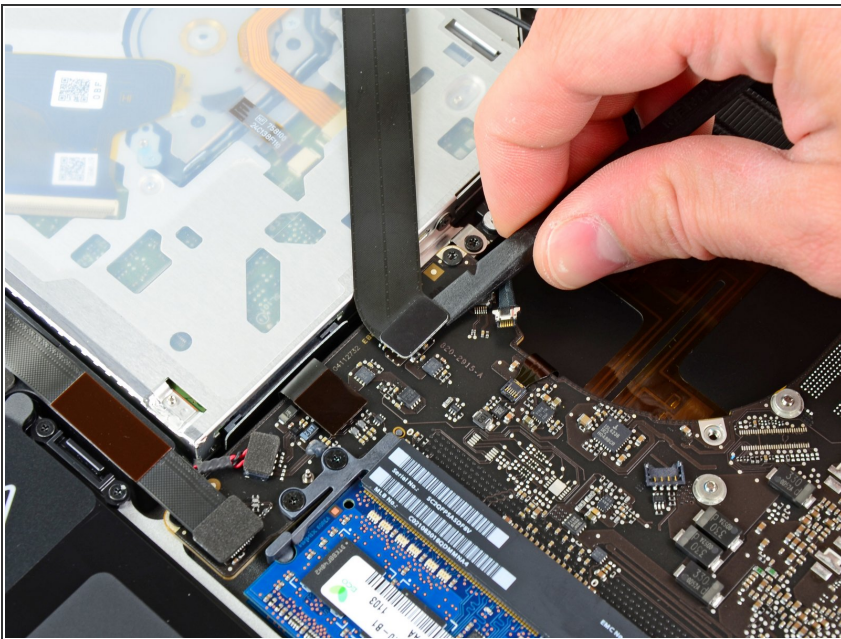


## Step 10



- Pull the camera cable out of its socket on the logic board.
- ⚠ Don't lift upward on the camera cable as you disconnect it. Pulling upward on the cable may damage both the cable and the logic board. Pull the cable parallel to the face of the logic board.

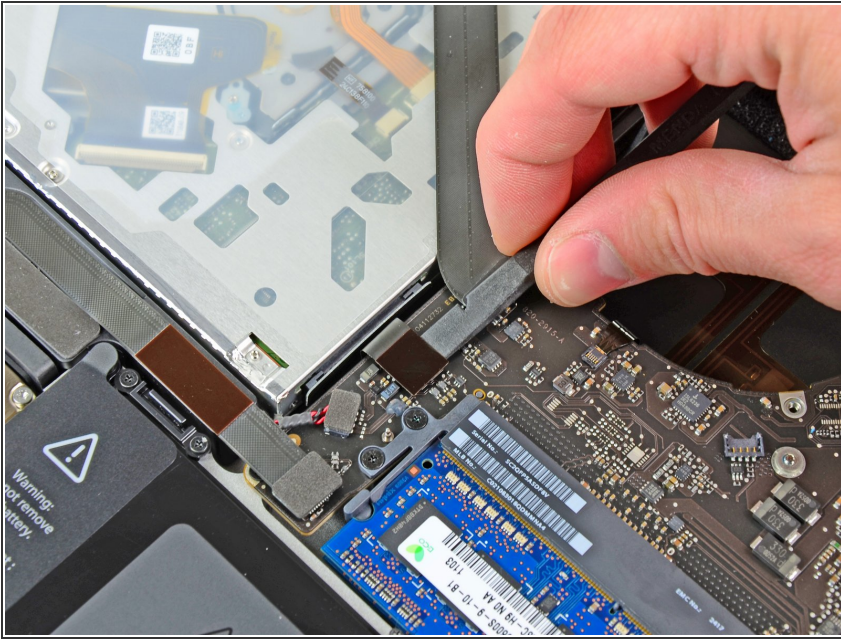
## Step 11



- Use the flat end of a spudger to pry the AirPort/Bluetooth connector up from its socket on the logic board.



## Step 12



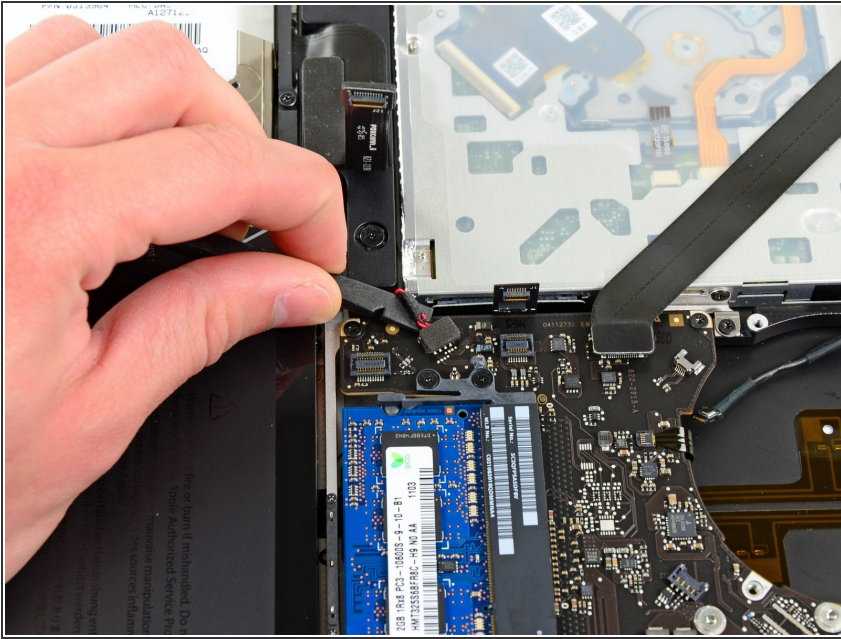
- Use the flat end of a spudger to lift the optical drive connector out of its socket on the logic board.

## Step 13



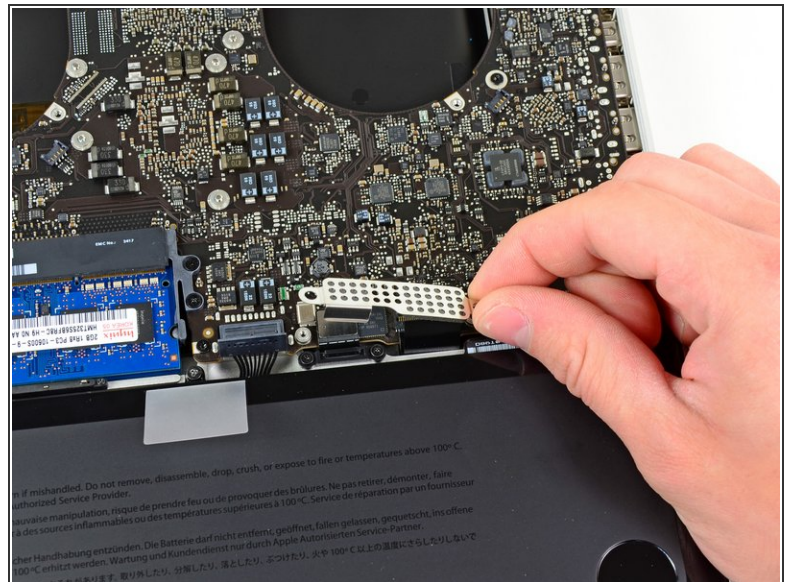
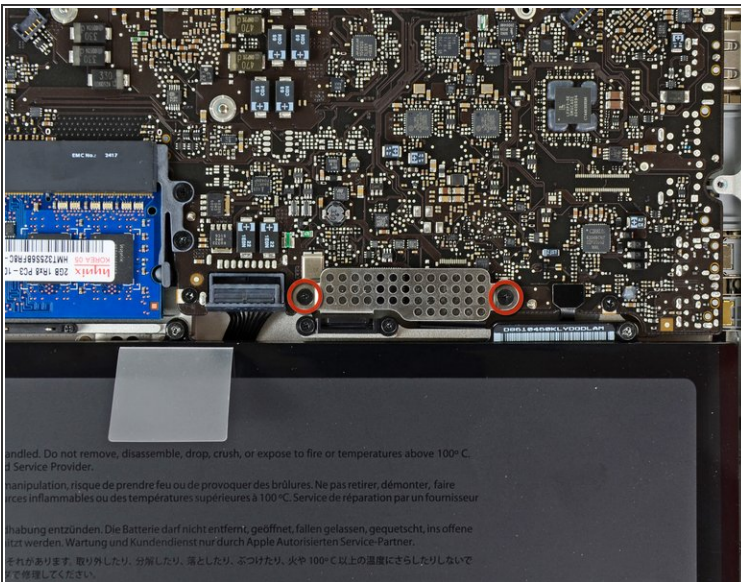
- Disconnect the hard drive/IR sensor cable from its socket on the logic board by lifting up from beneath its connector.

## Step 14



- Use the flat end of a spudger to lift the subwoofer/right speaker connector out of its socket on the logic board.
- ⓘ Pry up from beneath the wires.

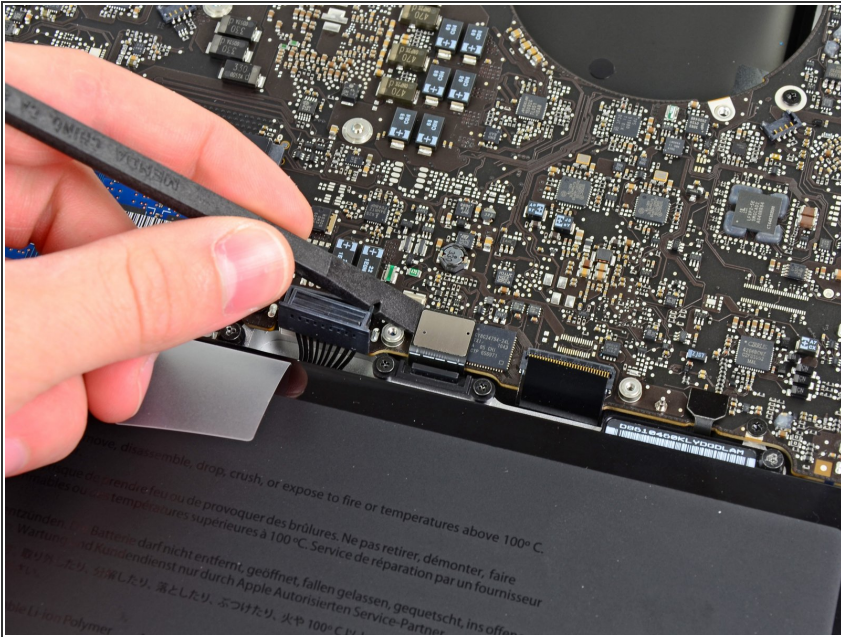
## Step 15



- Remove the two 1.5 mm ( 1.2 mm ) Phillips screws securing the keyboard/trackpad cable cover to the logic board.
- Lift the cover off the logic board and set it aside.

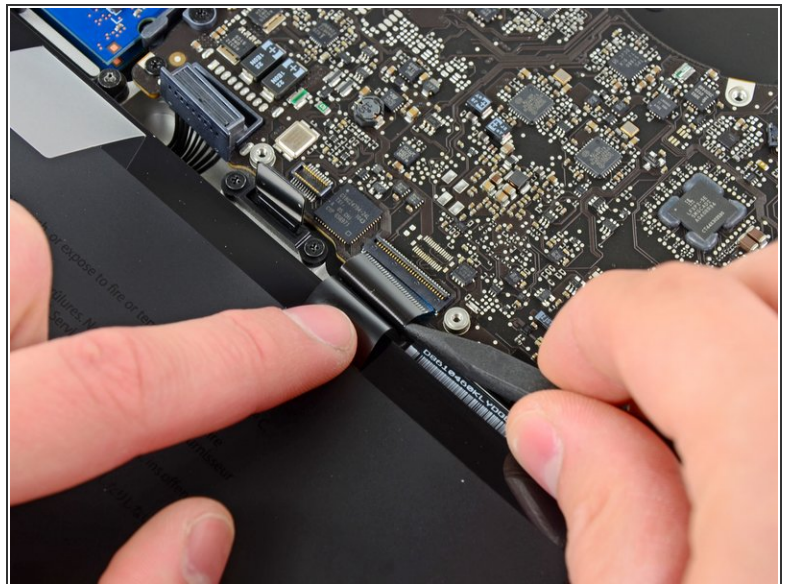
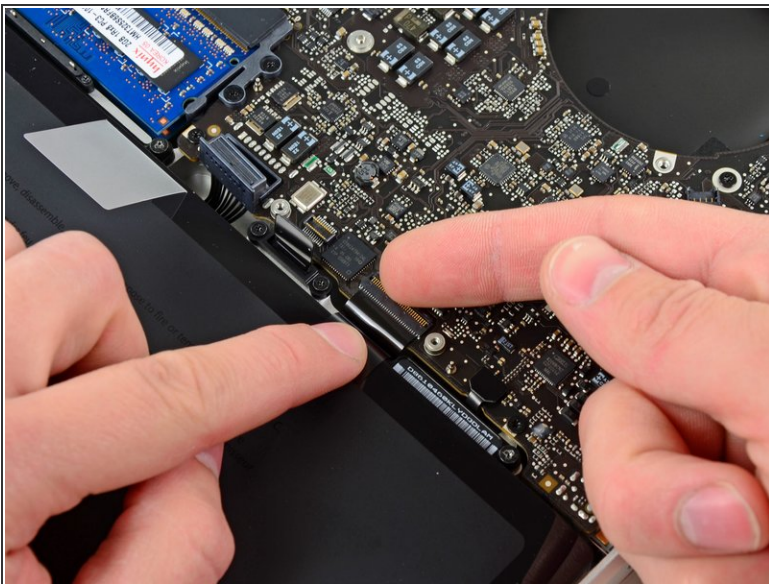


## Step 16



- Use the flat end of a spudger to pry the trackpad connector up and out of its socket on the logic board.

## Step 17

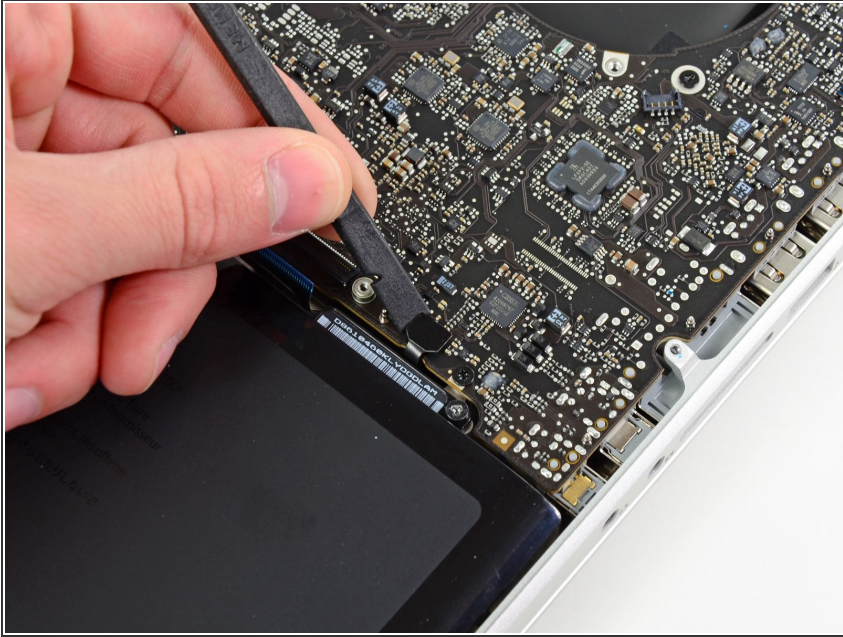


- Use your fingernail to flip up the retaining flap on the keyboard ribbon cable ZIF socket.

⚠ Be sure you are prying up on the hinged retaining flap, **not** the socket itself.

- Use the tip of a spudger to pull the keyboard ribbon cable out of its socket.

## Step 18



- Use the flat end of a spudger to lift the battery indicator connector up and out of its socket on the logic board.

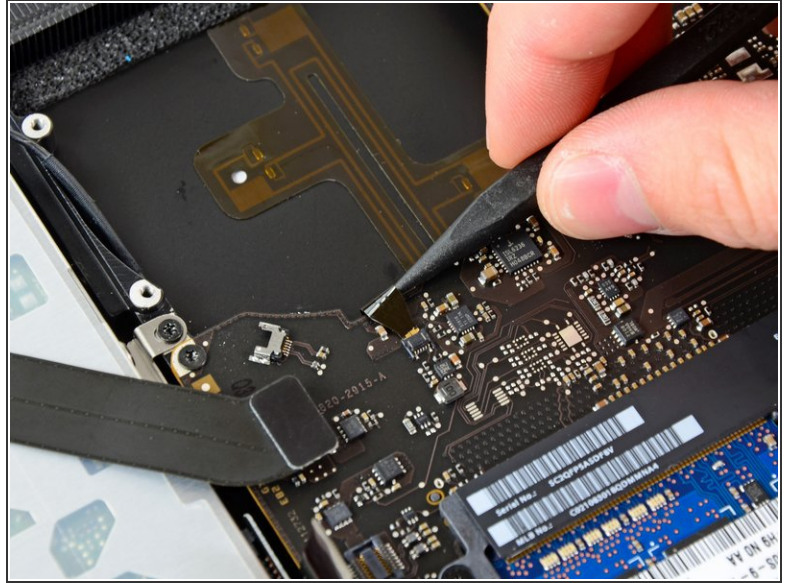
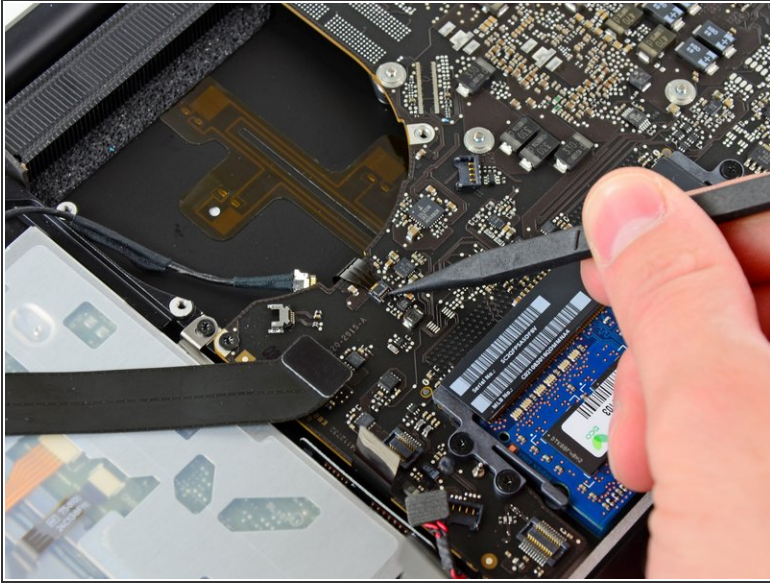


## Step 19



- Grab the plastic pull tab secured to the display data cable lock and rotate it toward the DC-In side of the computer.
  - Pull the display data cable straight out of its socket on the logic board.
- ⚠ Do not lift up on the display data cable, as its socket is very fragile. Pull the cable parallel to the face of the logic board.

## Step 20



- Use the tip of a spudger to flip up the retaining flap on the keyboard backlight ribbon cable ZIF socket.

⚠ Be sure you are flipping up the hinged retaining flap, **not** the socket itself.

- Pull the keyboard backlight ribbon cable out of its socket.

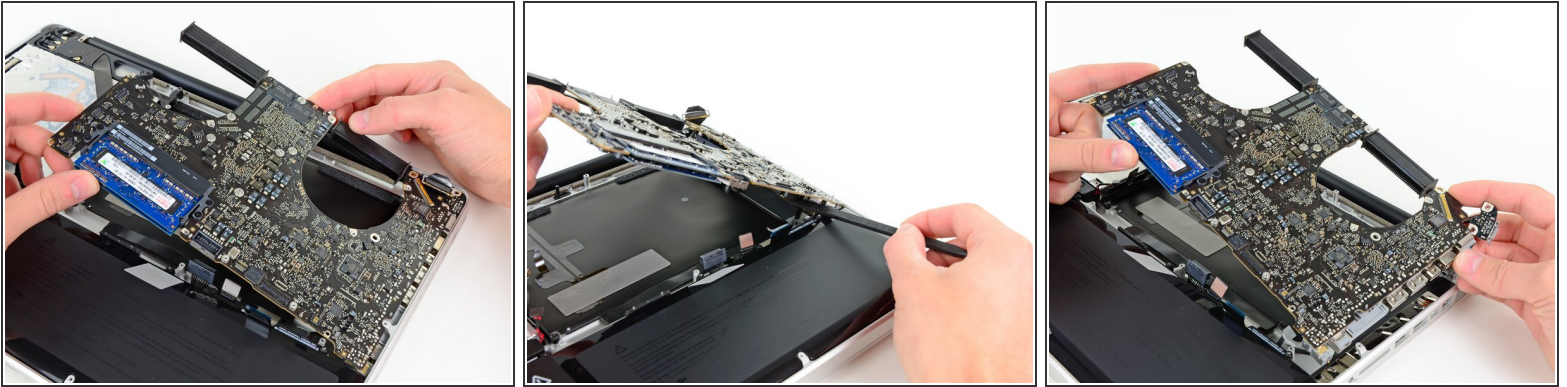
## Step 21



- Remove the following nine screws:
  - Seven 3.4 mm ( 3.1 mm) T6 Torx screws on the logic board
  - Two 8 mm T6 Torx screws on the DC-In board

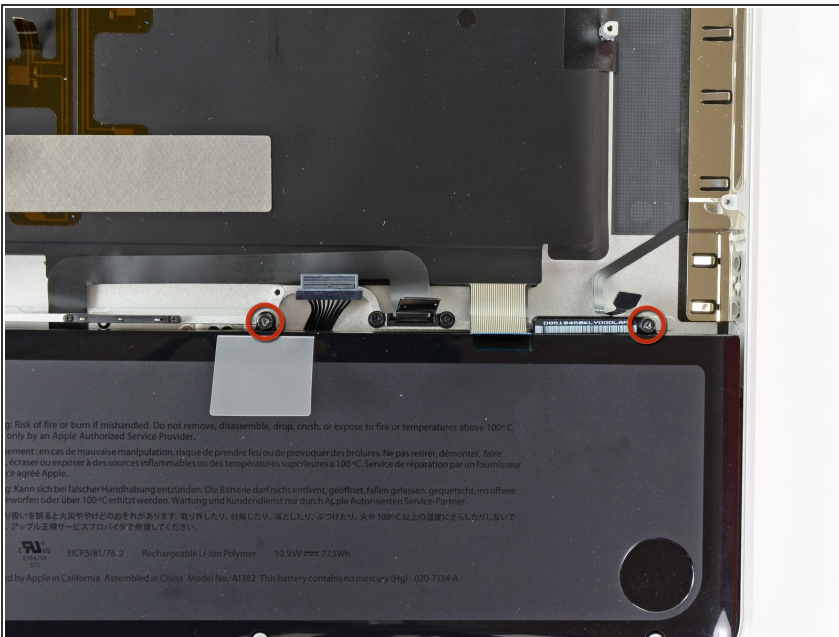


## Step 22



- Carefully lift the logic board assembly from its left side and work it out of the upper case, minding the optical drive cable and the I/O ports that may get caught during removal.
- If necessary, use the flat end of a spudger to separate the microphone from the upper case.
- Pull the I/O port side of the logic board away from the side of the upper case and remove the logic board assembly.

## Step 23 — Battery



- Remove the two 7.5 mm ( 7.2 mm ) Tri-point screws securing the battery to the upper case.

## Step 24



- Carefully peel the battery warning label off the upper case between the battery and the optical drive to reveal an additional Tri-point screw.

- Remove the last 7.5 mm ( 7.2 mm ) Tri-point screw securing the battery to the upper case.

⚠ Do not remove the label from the battery.

## Step 25



- Use the attached plastic pull tab to remove the battery from the upper case.

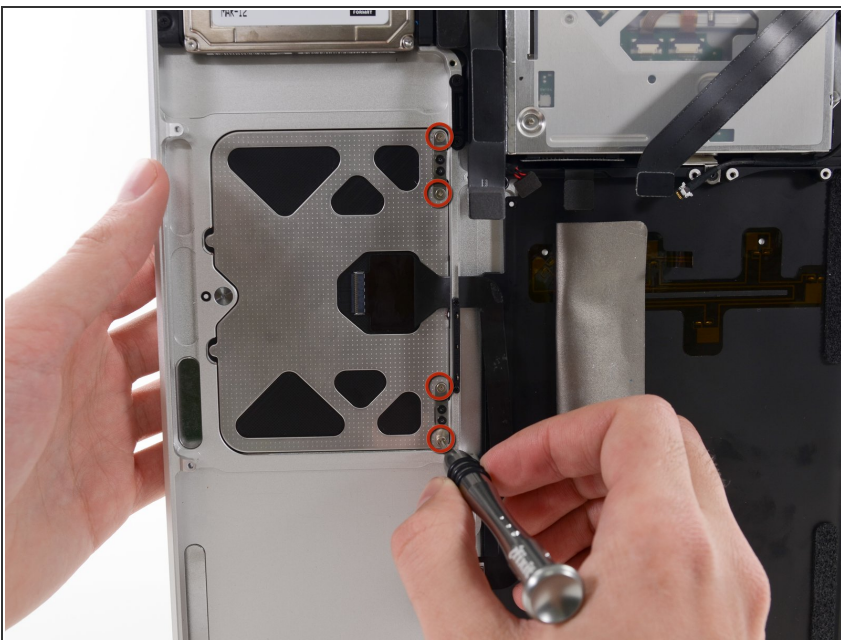


## Step 26 — Trackpad



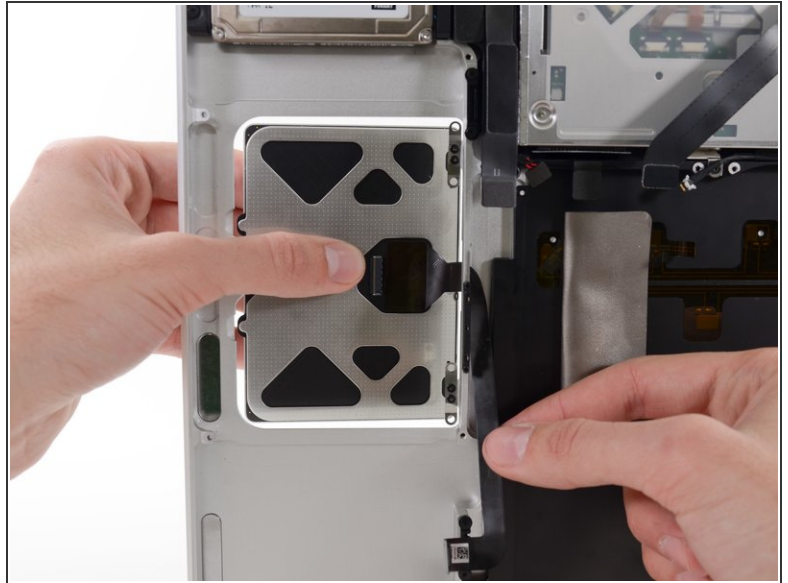
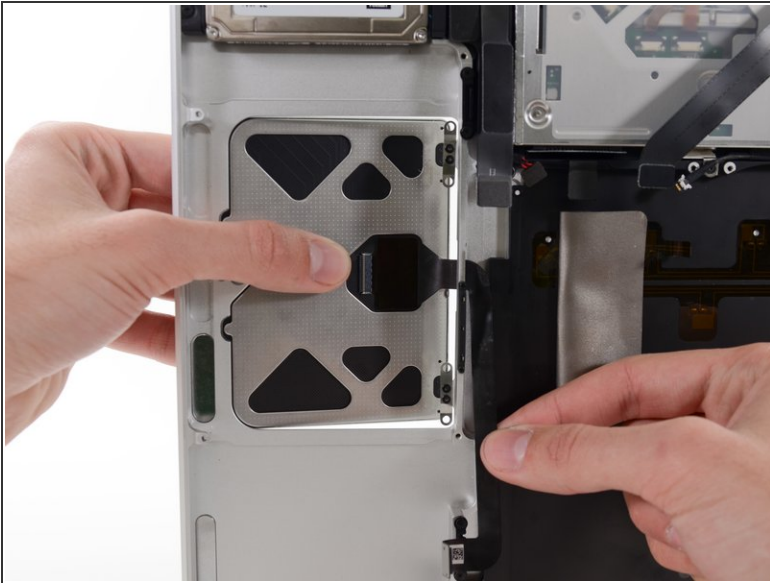
- Use the flat end of a spudger to peel up the edge of the large piece of black tape covering the trackpad cable.
- Peel the tape up and fold it back out of the way of the trackpad cable. Leaving it in place on the upper case will make it easier to reapply it during reassembly.

## Step 27



- ⓘ Open your MacBook Pro about 90 degrees and set it on its side on a table.
- Remove the four silver 1.3 mm Phillips #00 screws from the trackpad spring brackets.

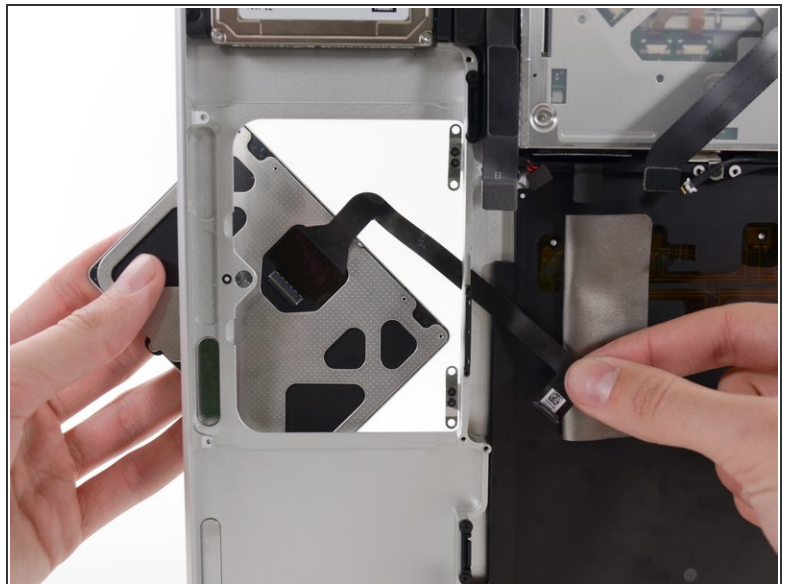
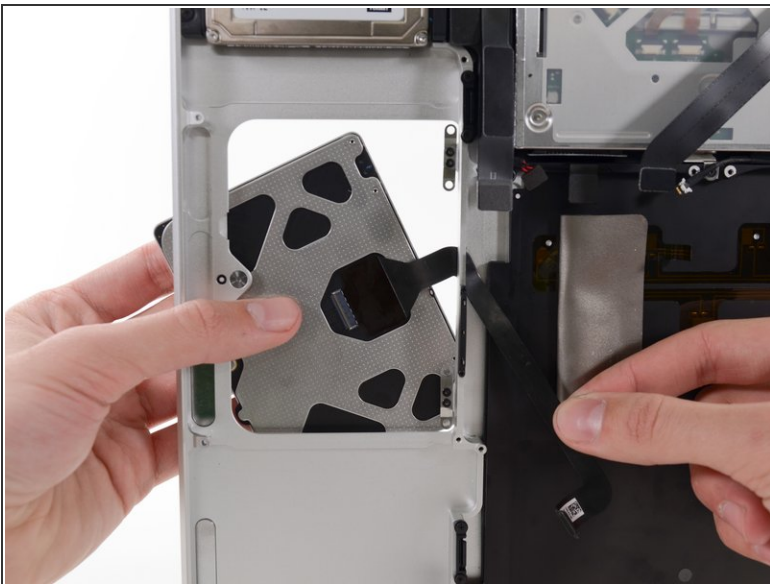
## Step 28



**i** While keeping a hold on the trackpad ribbon cable with one hand to keep it from tearing or creasing, ease the trackpad out of the upper case.

- Move the trackpad back and to the right.

## Step 29



- Once the trackpad is free of the upper case, guide the ribbon cable through the slot cut in the upper case.



## Step 30



- When reinstalling the trackpad, loosely replace the four Phillips screws and check the alignment of the trackpad on the keyboard side of the upper case.
- Once you have centered the trackpad in the upper case, tighten the Phillips screws all the way.
- Use the large Tri-point screw at the bottom of the trackpad to adjust the click stroke.

To reassemble your device, follow these instructions in reverse order.