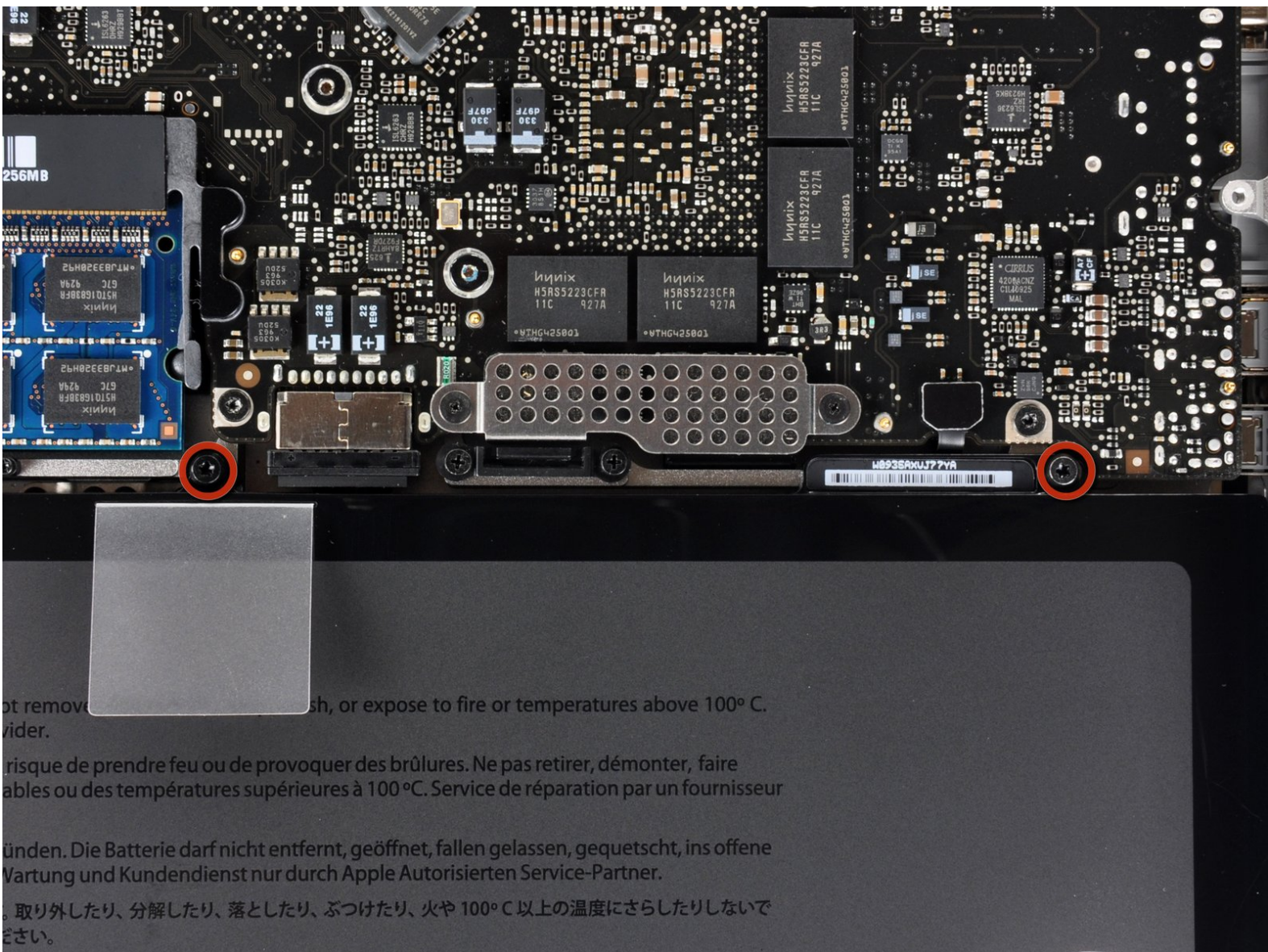




MacBook Pro 15" Unibody Mid 2009 Battery Replacement

Written By: Walter Galan



INTRODUCTION

Use this guide to replace an aging battery. If your battery is swollen, [take appropriate precautions](#).



TOOLS:

- [Phillips #00 Screwdriver](#) (1)
- [Spudger](#) (1)
- [P6 Pentalobe Screwdriver 2009 MacBook Pro Battery](#) (1)



PARTS:

- [MacBook Pro 15" Unibody \(Mid 2009/Mid 2010\) Replacement Battery](#) (1)

Step 1 — Lower Case



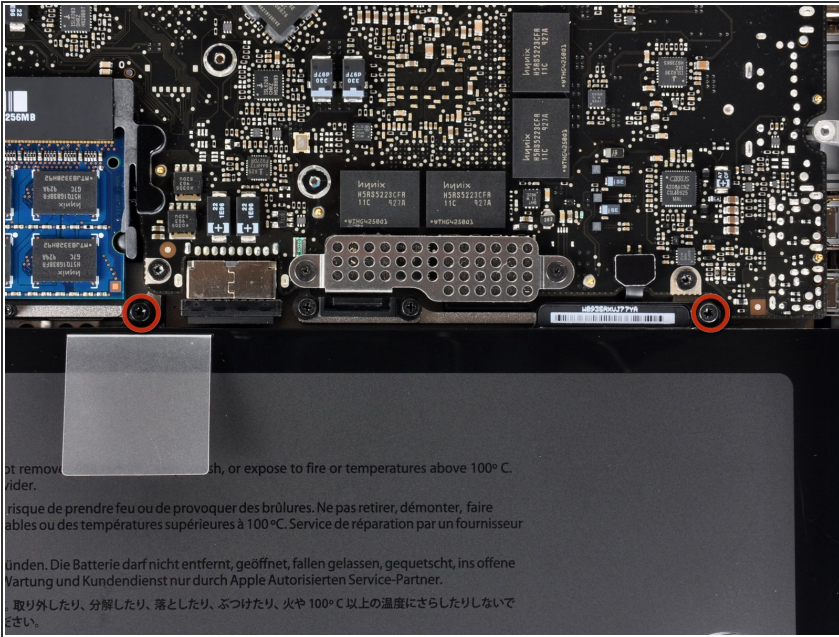
- Remove the following ten screws securing the lower case to the upper case:
 - Seven 3 mm Phillips screws.
 - Three 13.5 mm Phillips screws.

Step 2



- Using both hands, lift the lower case near the vent to pop it off two clips securing it to the upper case.
- Remove the lower case and set it aside.

Step 3 — Battery



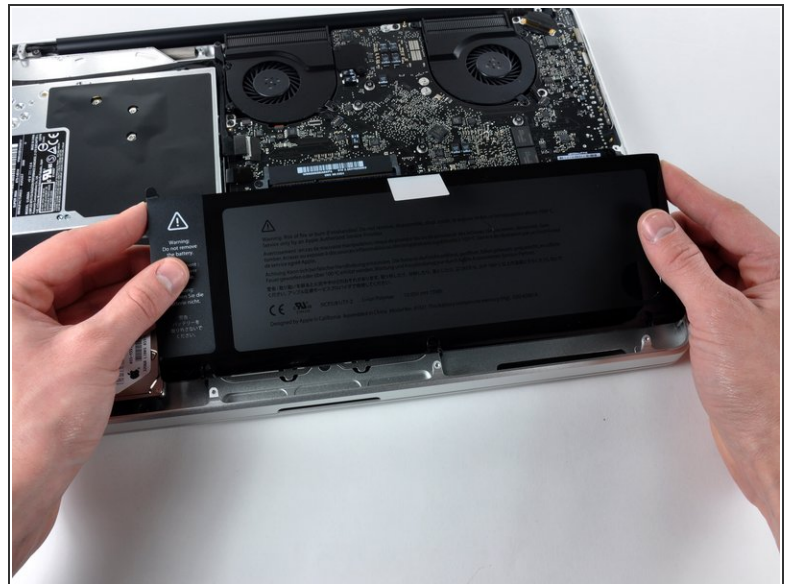
- Remove the two [5-Point Pentalobe](#) screws along the top edge of the battery.
- ⓘ You do not necessarily have to follow steps 3-6 to remove the battery in order to replace the hard drive. However it is recommended to remove all power sources from electronics before working on them.

Step 4



- Use the tip of a spudger to bend back the finger of the "Warning: Do not remove the battery" sticker while you remove third five-point Pentalobe screw hidden underneath.

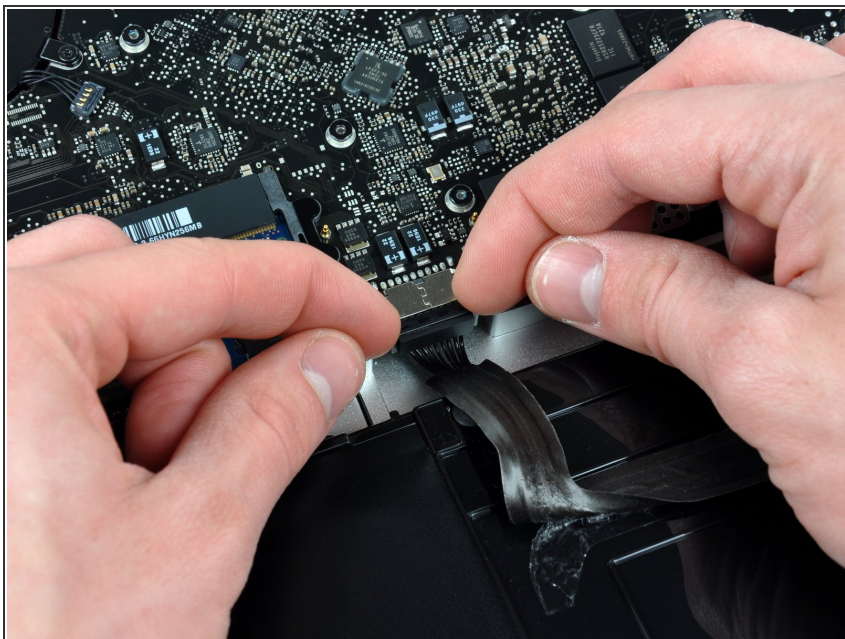
Step 5



- Lift the battery by its plastic pull tab and slide it away from the long edge of the upper case.

⚠ Do not try to completely remove the battery just yet.

Step 6



- Tilt the battery back enough to access the battery cable connector.
- Pull the battery cable connector away from its socket on the logic board and remove the battery from the upper case.
- ☑ If you're installing a new battery, you should [calibrate](#) it after installation.

To reassemble your device, follow these instructions in reverse order.