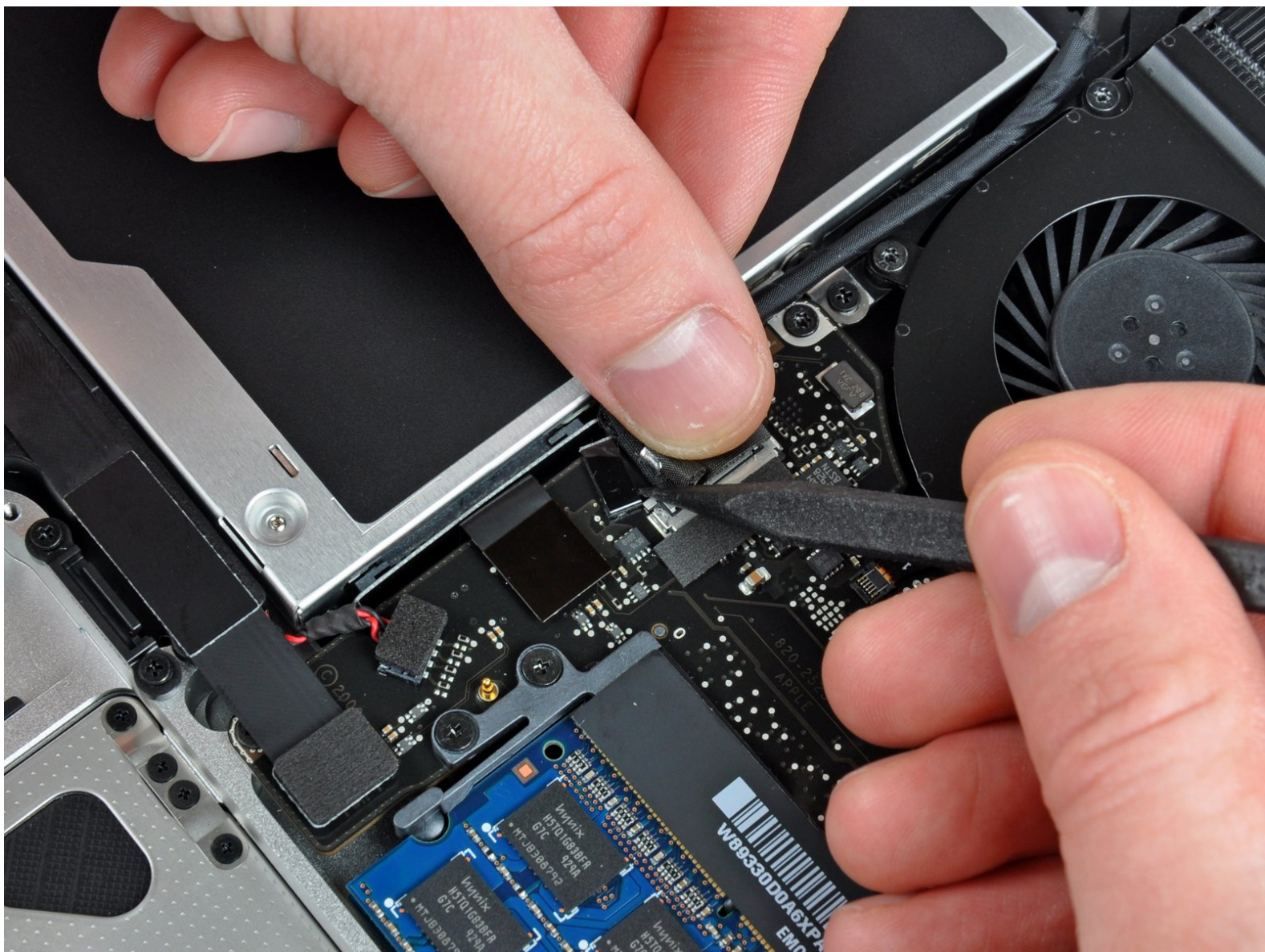




# MacBook Pro 15" Unibody Mid 2009 Display Replacement

Written By: Andrew Bookholt



# INTRODUCTION

Use this guide to replace the entire display assembly.



## TOOLS:

- [Phillips #00 Screwdriver](#) (1)
- [Spudger](#) (1)
- [T6 Torx Screwdriver](#) (1)
- [P6 Pentalobe Screwdriver 2009 MacBook Pro Battery](#) (1)



## PARTS:

- [MacBook Pro 15" Unibody \(Mid 2009\) Display Assembly](#) (1)
- [MacBook Pro 15" Unibody \(Mid 2009\) Anti-Glare Display Assembly](#) (1)

## Step 1 — Lower Case



- Remove the following ten screws securing the lower case to the upper case:
  - Seven 3 mm Phillips screws.
  - Three 13.5 mm Phillips screws.

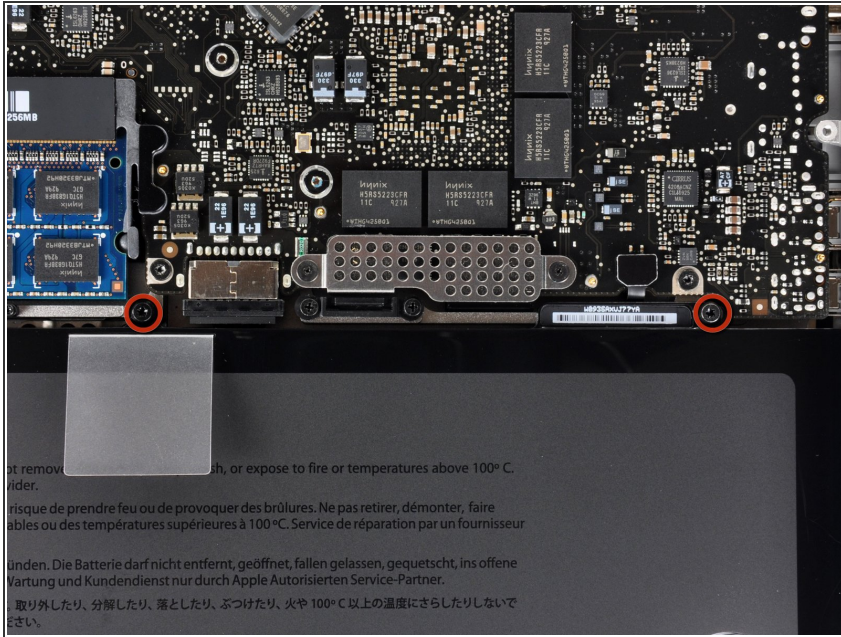
## Step 2



- Using both hands, lift the lower case near the vent to pop it off two clips securing it to the upper case.
- Remove the lower case and set it aside.



## Step 3 — Battery



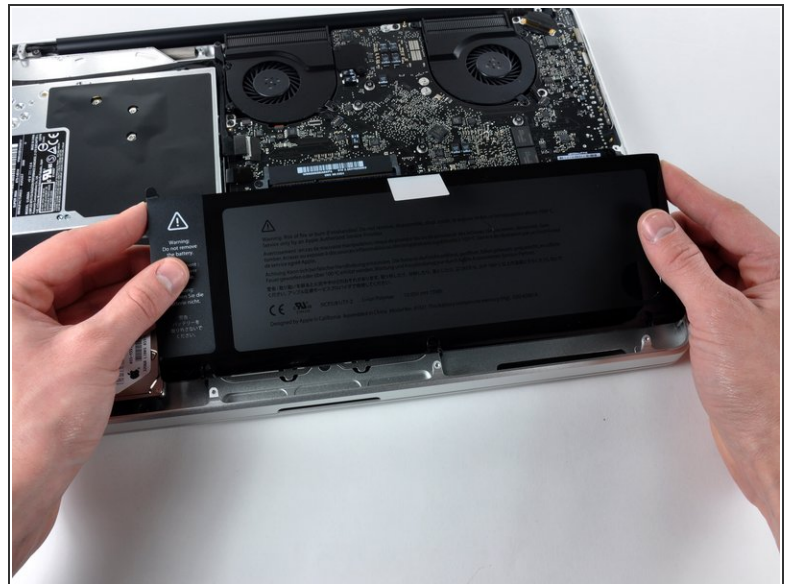
- Remove the two [5-Point Pentalobe](#) screws along the top edge of the battery.
- ⓘ You do not necessarily have to follow steps 3-6 to remove the battery in order to replace the hard drive. However it is recommended to remove all power sources from electronics before working on them.

## Step 4



- Use the tip of a spudger to bend back the finger of the "Warning: Do not remove the battery" sticker while you remove third five-point Pentalobe screw hidden underneath.

## Step 5

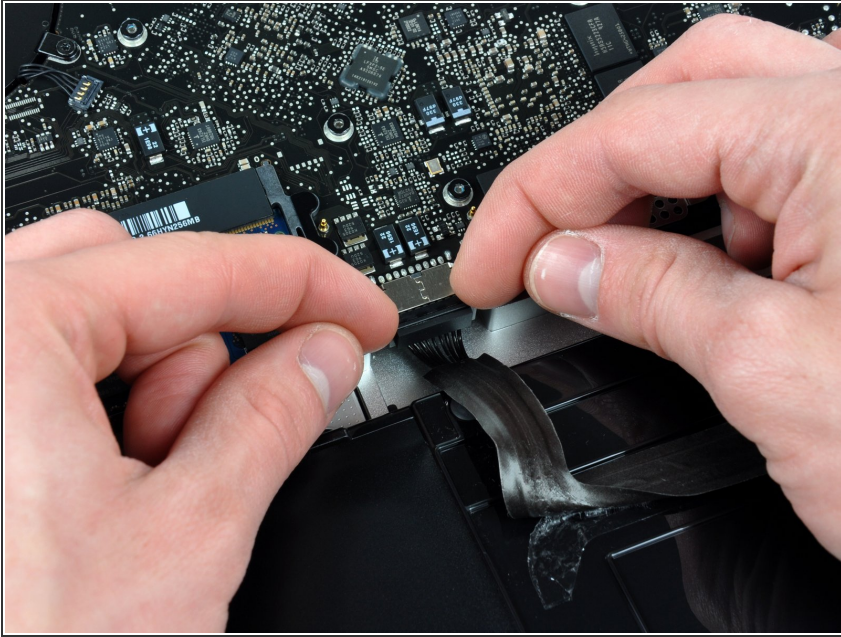


- Lift the battery by its plastic pull tab and slide it away from the long edge of the upper case.

⚠ Do not try to completely remove the battery just yet.

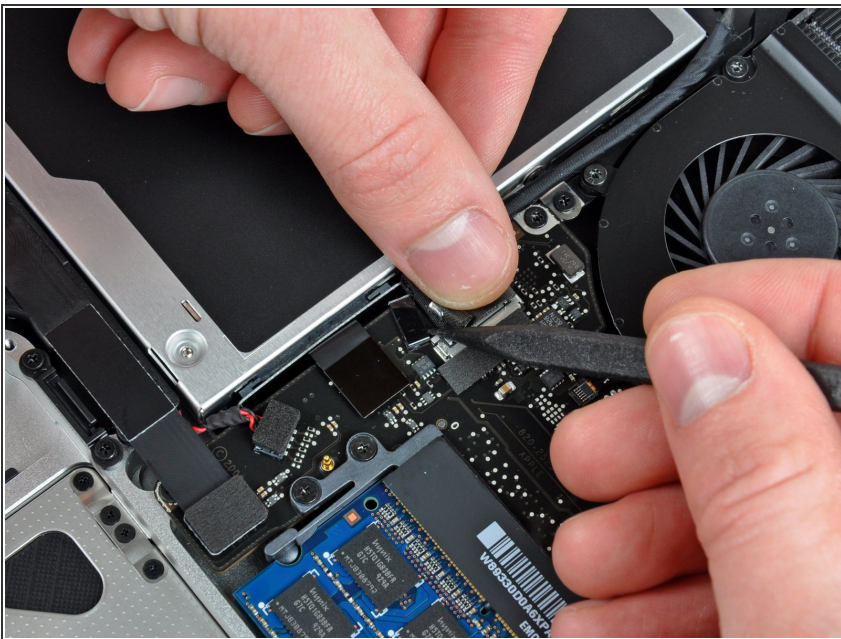


## Step 6



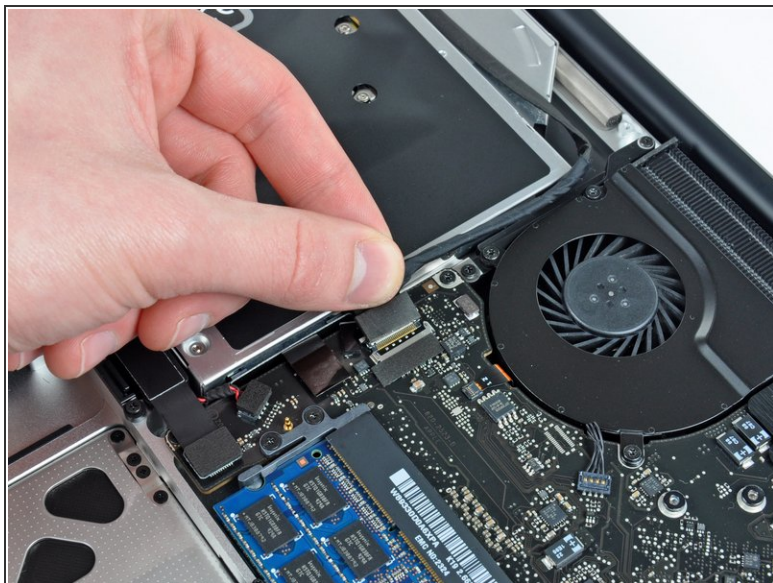
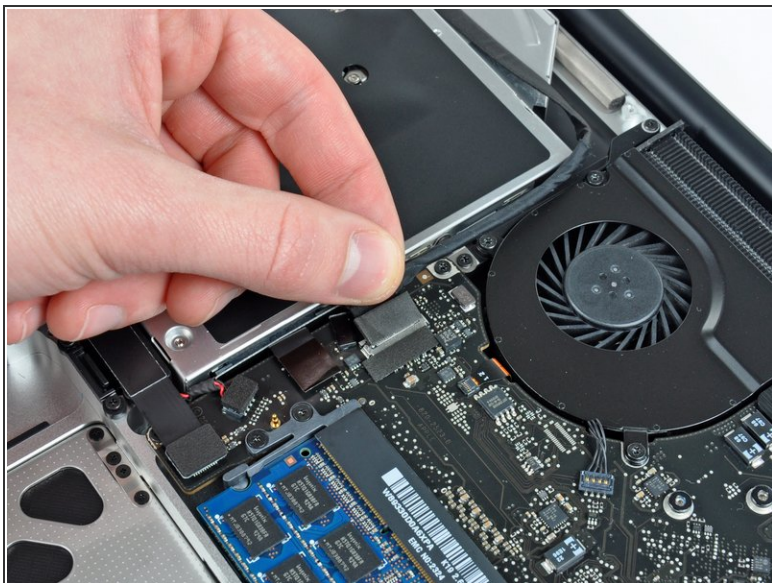
- Tilt the battery back enough to access the battery cable connector.
- Pull the battery cable connector away from its socket on the logic board and remove the battery from the upper case.
- ✦ If you're installing a new battery, you should [calibrate](#) it after installation.

## Step 7 — Display



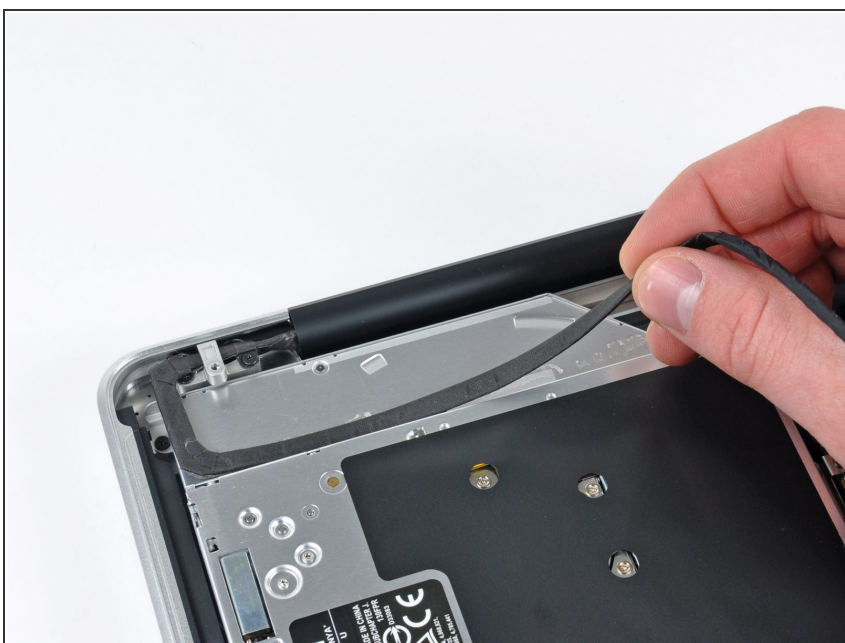
- ⚠ Apple sticks a small strip of clear plastic with adhesive applied to one side of the logic board behind the camera cable connector to keep it in its socket. When moving it out of the way, be sure not to break any surface-mount components off the logic board.
- Use the tip of a spudger to rotate the plastic retainer away from the camera cable connector.

## Step 8



- Pull the camera cable away from its socket on the logic board.
- ⚠ Pull the connector parallel to the face of the logic board, not straight up.

## Step 9



- Peel the camera cable off the adhesive securing it to the body of the optical drive.



## Step 10



**i** This step is only required if you have an anti-glare display. If you have a glossy display, skip to step 12.

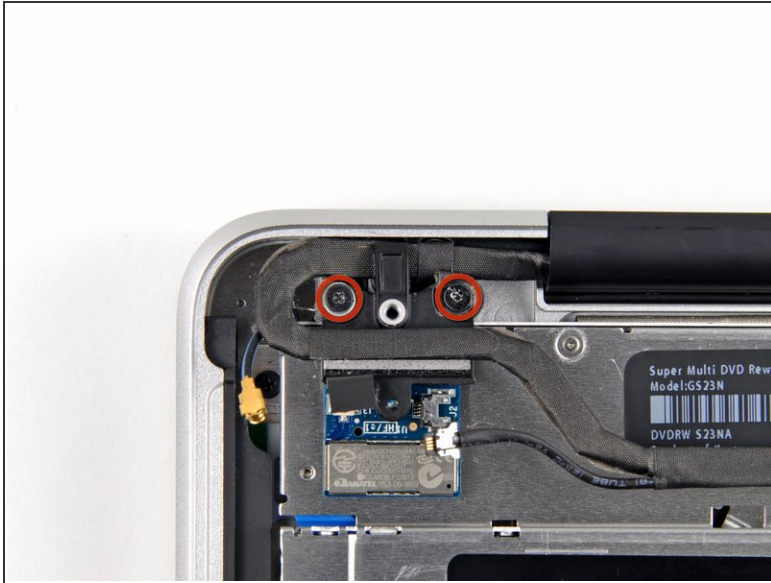
- Disconnect the Bluetooth cable by pulling the male end straight away from its socket.

**!** Pull the connector parallel to the face of the logic board, not straight up.

- Use the flat end of a spudger to pry the Bluetooth antenna cable up from its socket on the board.



## Step 11

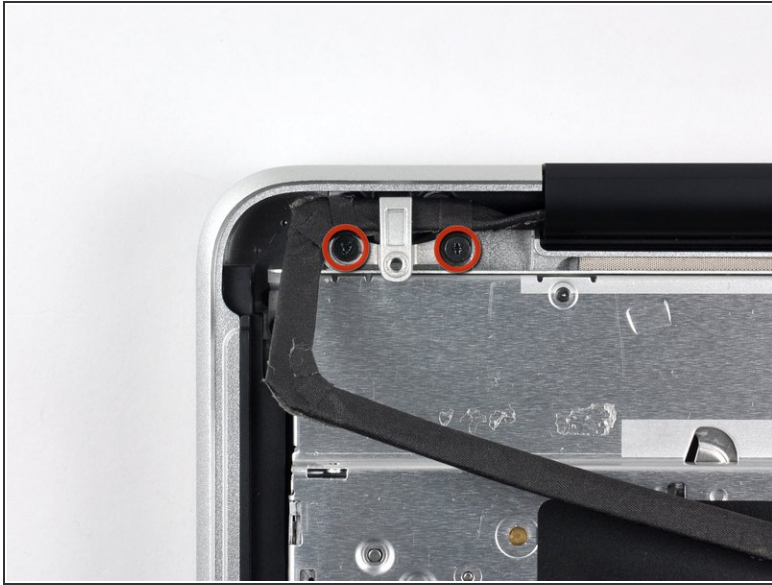




- i** This step is only required if you have an anti-glare display.

  - Remove the two 8 mm Phillips screws securing the Bluetooth/camera cable retainer to the upper case.
- i** One of the screws may remain captive in the Bluetooth/camera cable ground loop. If replacing the display, be sure to transfer this screw to the new unit.

  - Lift the Bluetooth board/cable retainer assembly out of the upper case.

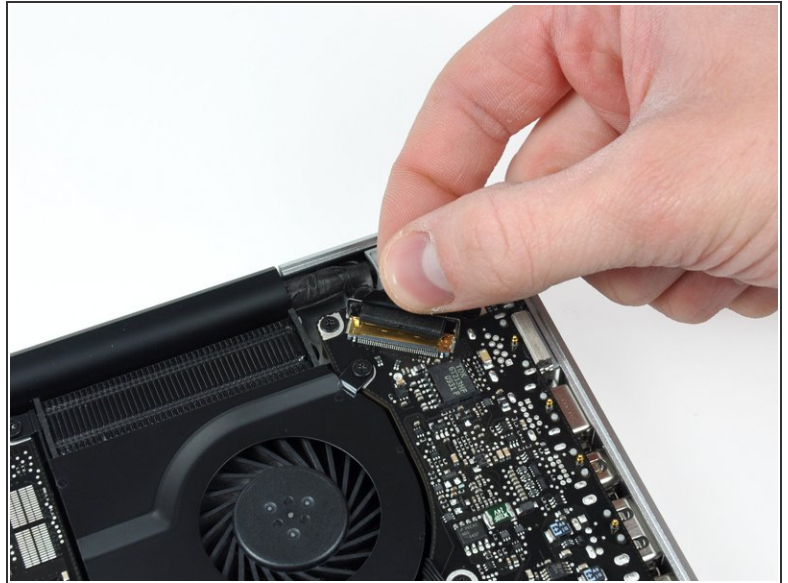
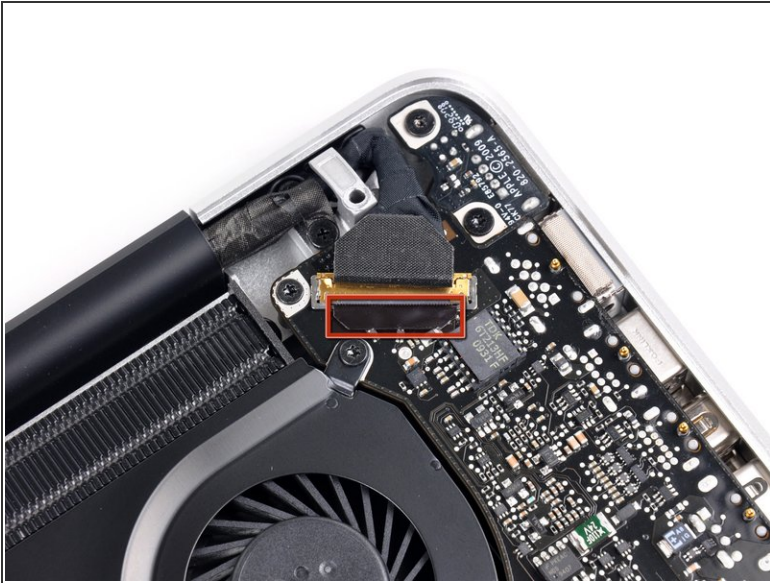
## Step 12



-  This step is only for glossy display machines. If you have an anti-glare display, skip this step.
- Remove the two 8 mm Phillips screws securing the camera cable retainer to the upper case.
  -  One of the screws may remain captive in the camera cable ground loop. If replacing the display, be sure to transfer this screw to the new unit.
  - Lift the camera cable retainer out of the upper case.

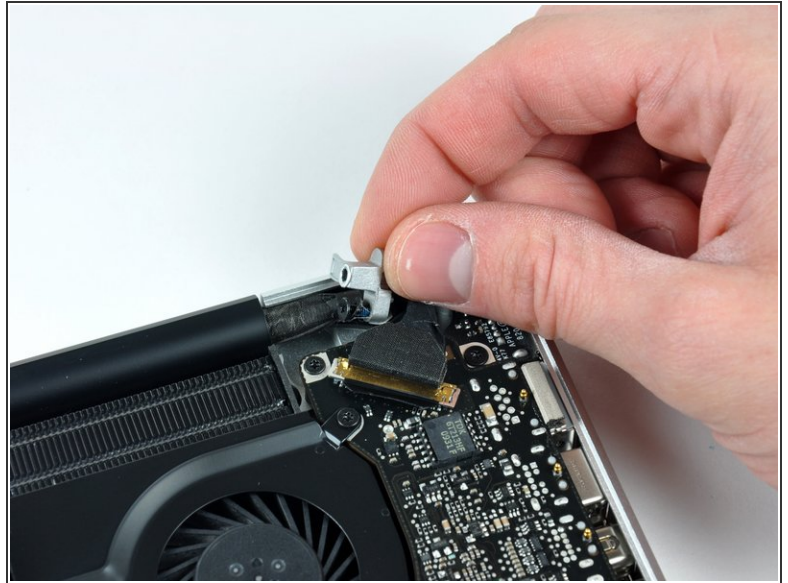


## Step 13



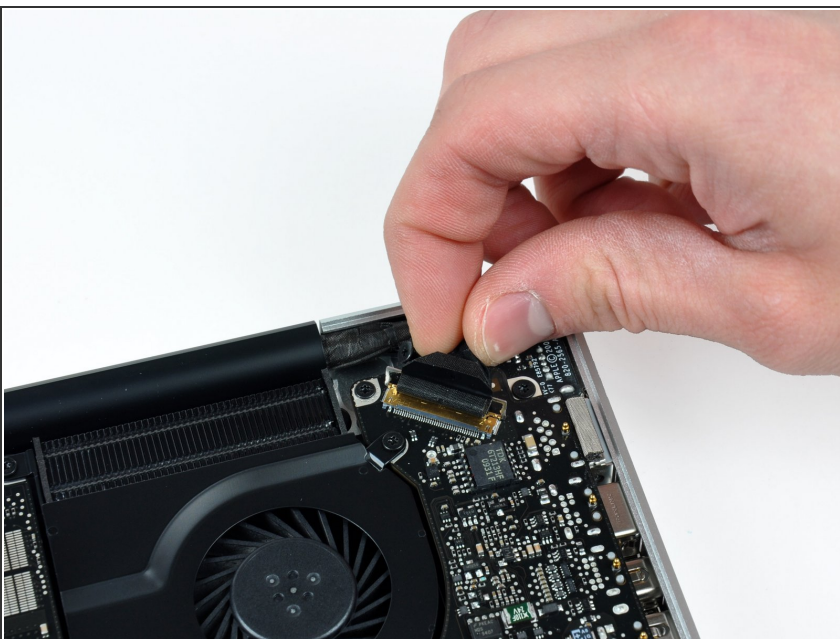
- Grab the plastic pull tab secured to the display data cable lock and rotate it toward the DC-In side of the computer.

## Step 14



- Remove the single 7 mm Phillips screw securing the display data cable retainer to the upper case.
- ☛ This screw may remain captive in the display data cable ground loop. If replacing the display, be sure to transfer this screw to the new unit.
- Remove the display data cable retainer from the upper case.

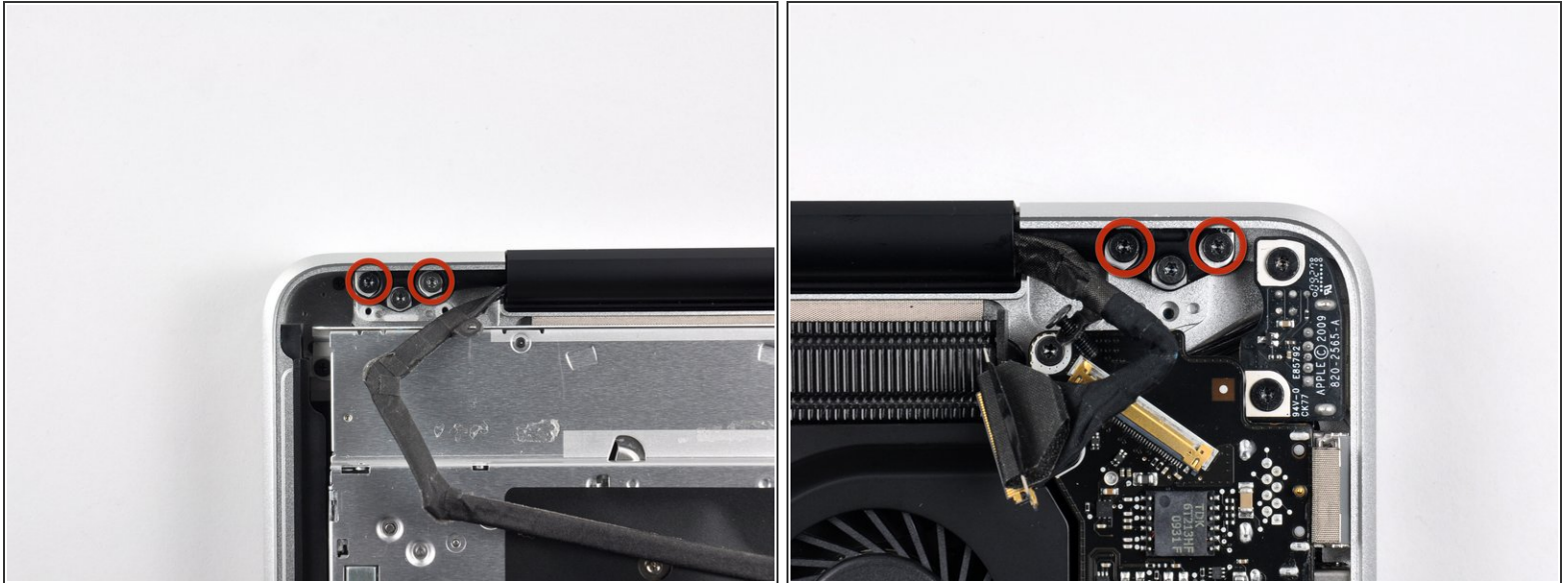
## Step 15



- ⓘ Be sure the display data cable lock is rotated toward the DC-In board before proceeding.
- Pull the display data cable connector straight away from its socket.
- ⚠ Make sure to pull the connector parallel to the face of the logic board, not straight up from its socket.



## Step 16



- Remove the outer two T6 Torx screws securing both display hinges to the upper case (four screws total).


## Step 17



- Open your MacBook Pro so the display is perpendicular to the upper case.
- Place your opened MacBook Pro on a table as pictured.
- While holding the display and upper case together with your left hand, remove the remaining T6 Torx screw from the lower display bracket.

## Step 18



 Be sure to hold the display and upper case together with your left hand. Failure to do so may cause the freed display/upper case to fall, potentially damaging each component.

- Remove the last remaining T6 Torx screw securing the display to the upper case.

## Step 19



- Grab the upper case with your right hand and rotate it slightly toward the top of the display so the upper display bracket clears the edge of the upper case.
- Rotate the display slightly away from the upper case.
- Lift the display up and away from the upper case, minding any brackets or cables that may get caught.

To reassemble your device, follow these instructions in reverse order.

This document was generated on 2019-09-19 02:37:46 AM (MST).



