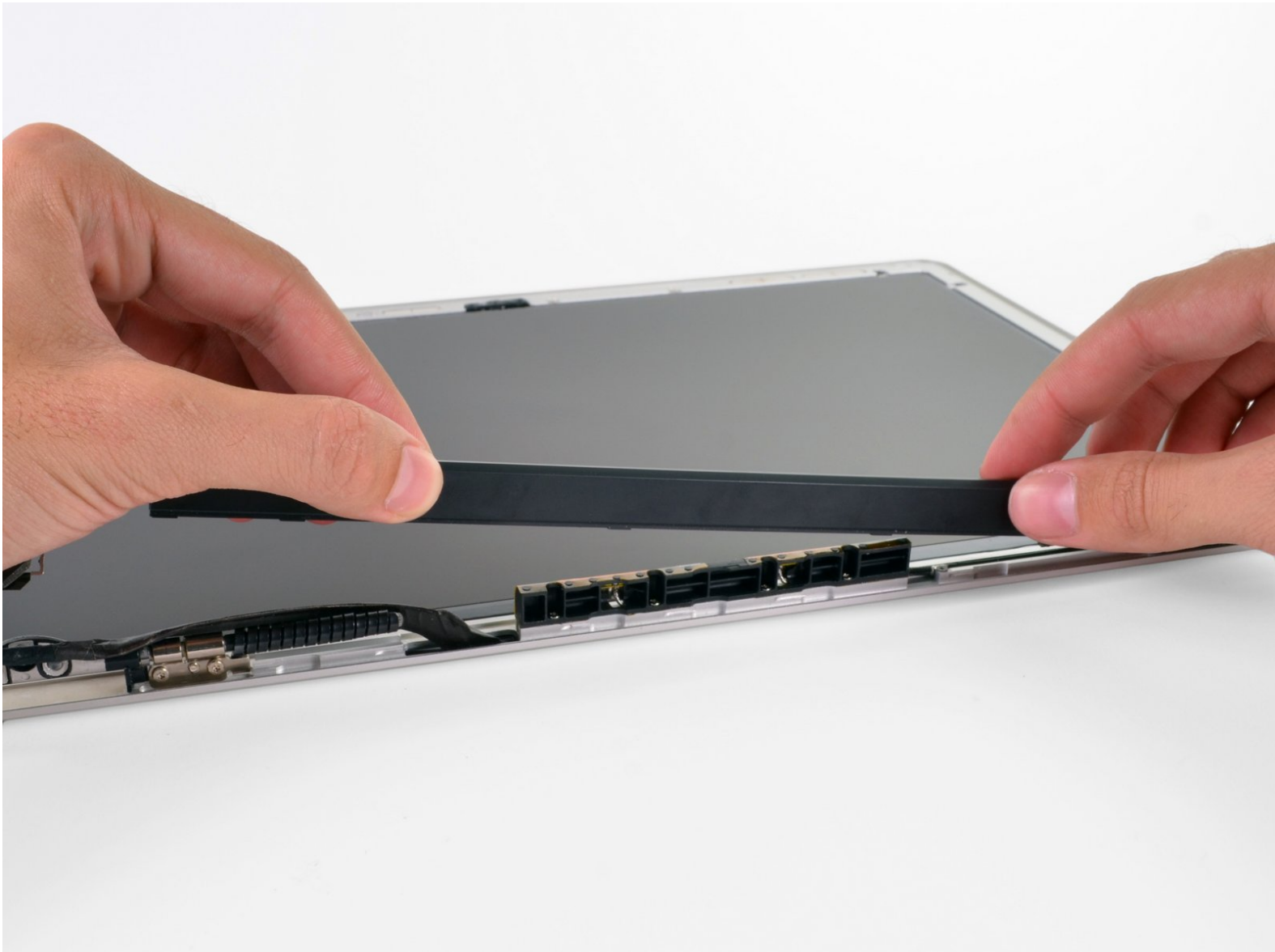




MacBook Pro 15" Unibody Mid 2010 Clutch Cover Replacement

Prereq only for Matte Display.

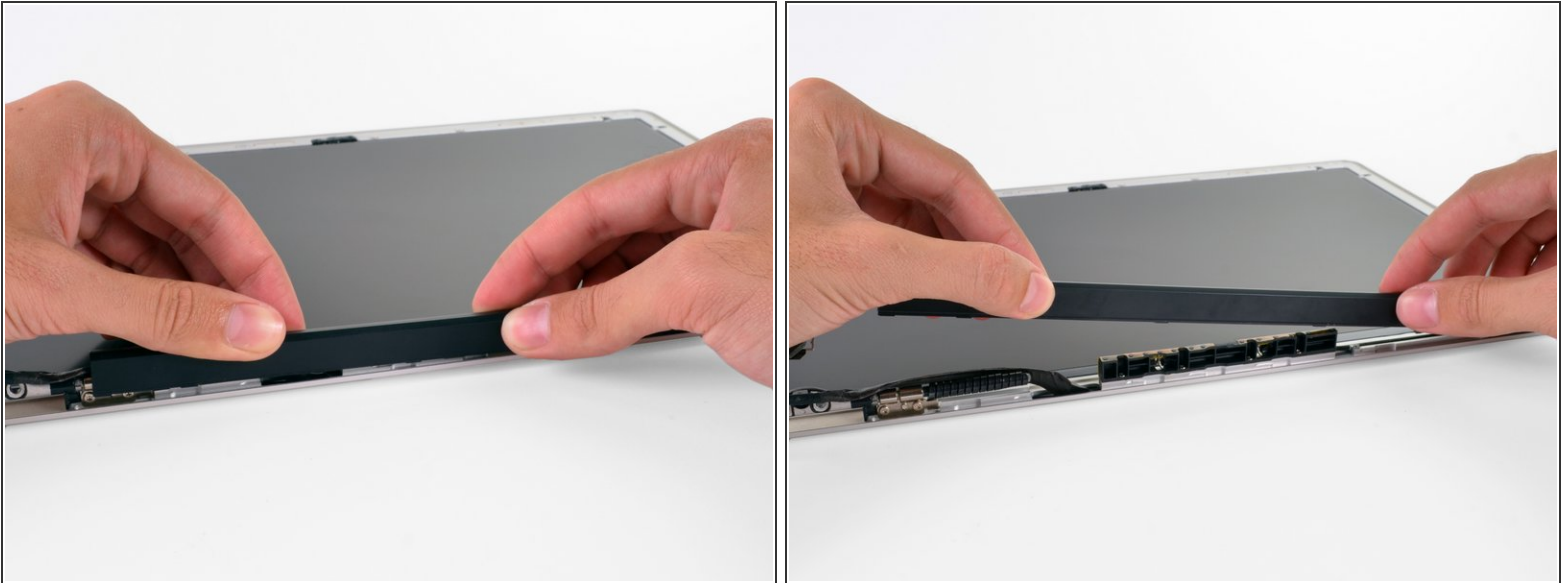
Written By: Walter Galan



INTRODUCTION

Prereq only for removing the Matte Display.

Step 1 — Clutch Cover



- Lifting the left edge of the clutch cover, gently rock it back and forth on its long axis while pulling it away from the display.
- Remove the clutch cover from the display, minding any cables that may get caught.
- ✦ When reinstalling the clutch cover, be sure to widen the opening when slipping it over the small black plastic cosmetic cover that fills the open end of the clutch cover when it is in place. The cosmetic cover has very thin and delicate plastic arms that hold it to the right clutch hinge.

To reassemble your device, follow these instructions in reverse order.