



MacBook Pro 15" Unibody Mid 2010 Logic Board Replacement

Written By: Walter Galan





TOOLS:

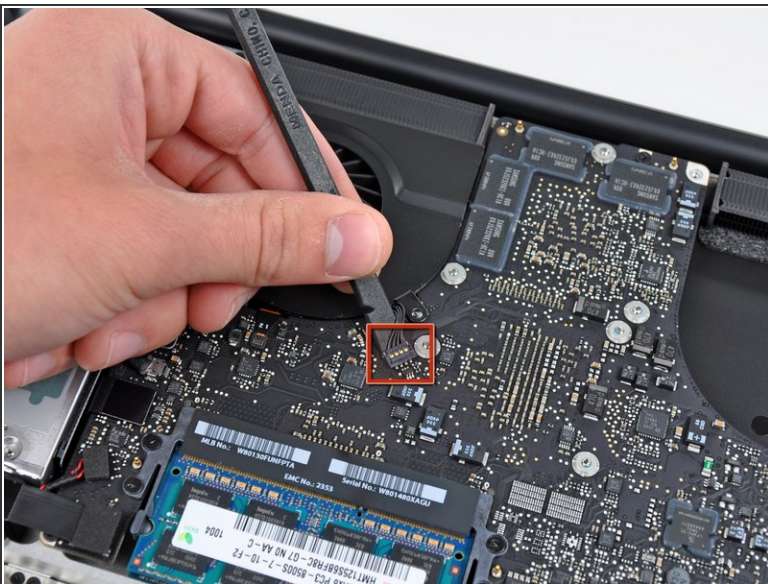
- [T6 Torx Screwdriver](#) (1)
 - [Phillips #00 Screwdriver](#) (1)
 - [Spudger](#) (1)
-

Step 1 — Logic Board



- Remove the three T6 Torx screws securing the right fan to the upper case.

Step 2



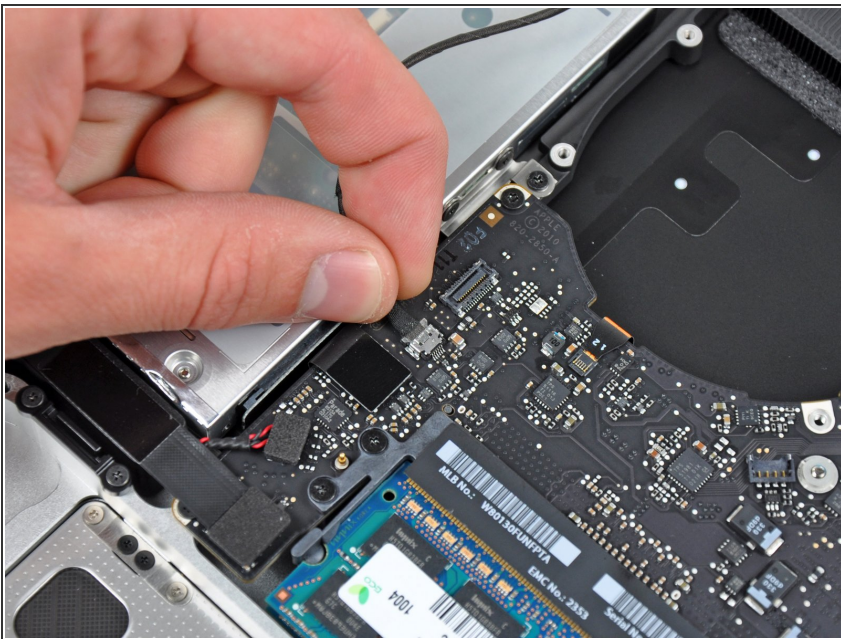
- Use the flat end of a spudger to pry the right fan connector up out of its socket on the logic board.
- ⓘ It is useful to twist the spudger axially from beneath the fan cable wires to release the connector.
- Remove the right fan from the upper case.

Step 3



- Use the flat end of a spudger to pry the AirPort / Bluetooth ribbon cable up off its socket on the logic board.
- ❗ Fold the AirPort / Bluetooth ribbon cable back to keep it out of the way of the logic board.

Step 4



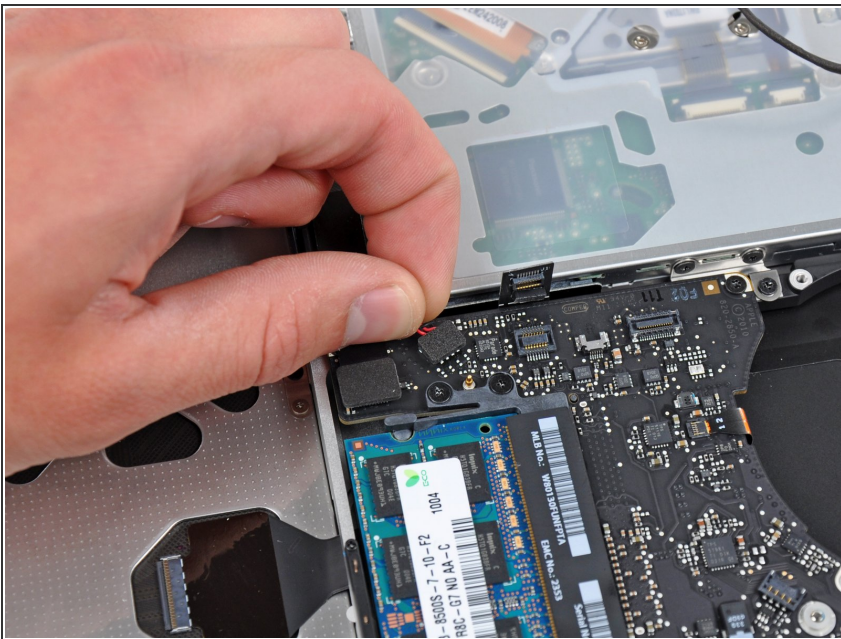
- Disconnect the iSight cable by pulling its connector toward the optical drive opening.

Step 5



- Use the flat end of a spudger to pry the optical drive cable connector up from the logic board.
- ❗ Fold the optical drive cable back to keep it out of the way of the logic board.

Step 6



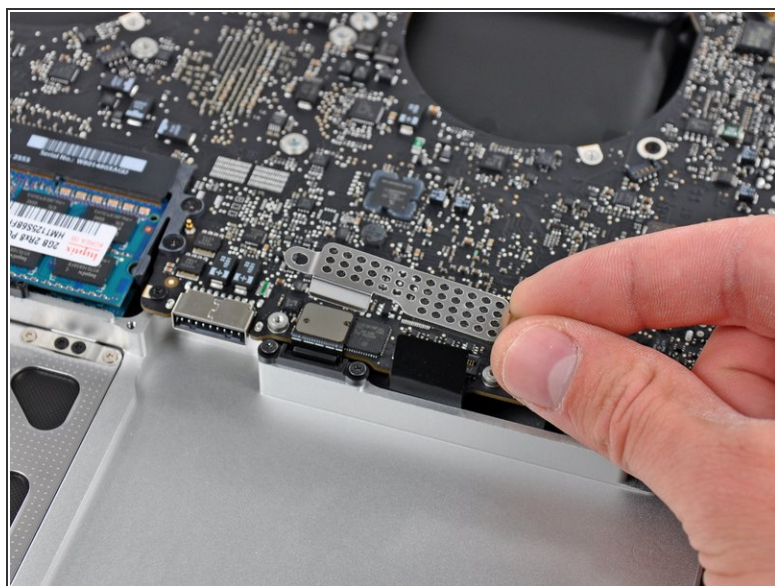
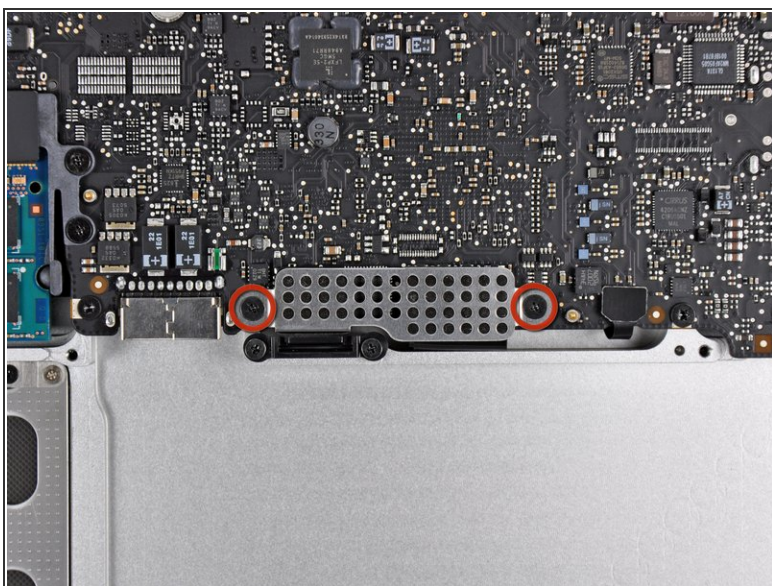
- Carefully pull the subwoofer/right speaker cable up to lift its connector out of its socket on the logic board.

Step 7



- Use the flat end of a spudger to pry the hard drive cable connector up out of its socket on the logic board.

Step 8



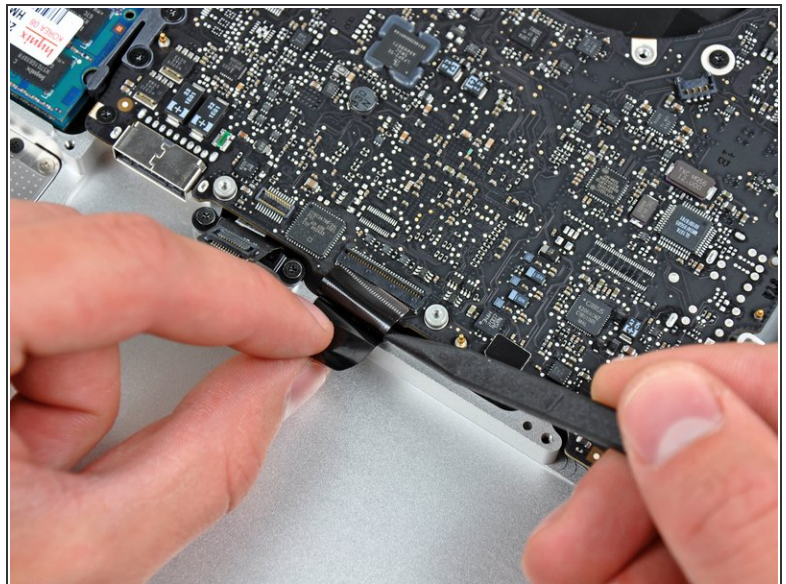
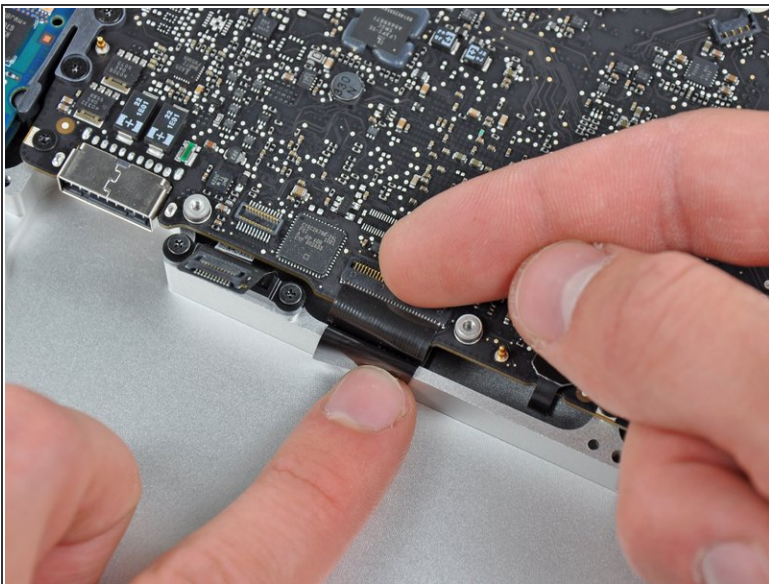
- Remove the two short Phillips screws securing the small EMI shield to the logic board.
- Remove the EMI shield from the logic board.

Step 9



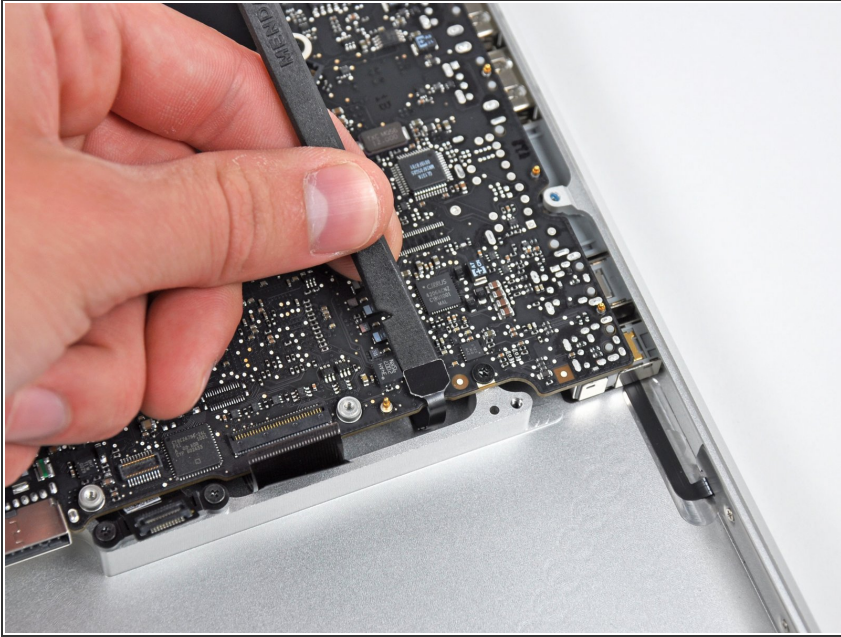
- Use the flat end of a spudger to pry the trackpad cable connector up out of its socket on the logic board.

Step 10



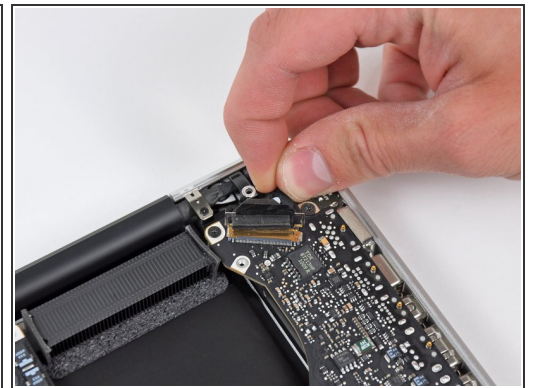
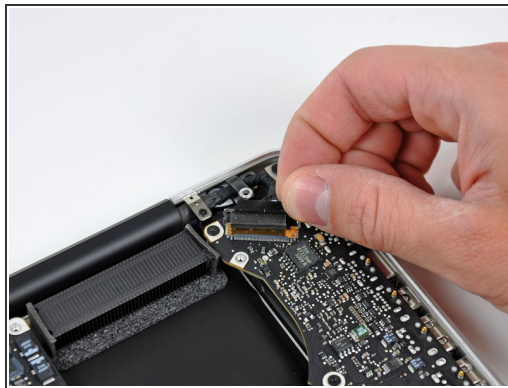
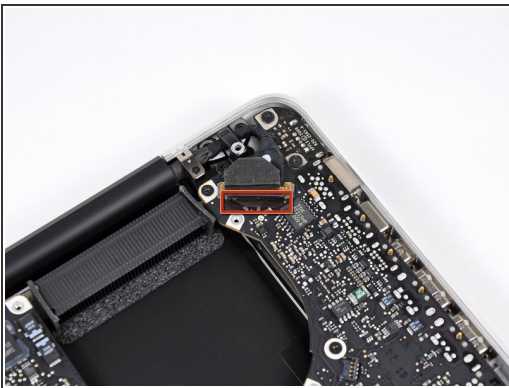
- Use your fingernail to carefully flip up the keyboard ribbon cable retaining flap.
- ⚠ Make sure you are flipping up the retaining flap, **not** the socket itself.
- Use the tip of a spudger to pull the keyboard ribbon cable straight out of its socket.

Step 11



- Use the flat end of a spudger to pry the battery indicator cable connector up out of its socket on the logic board.

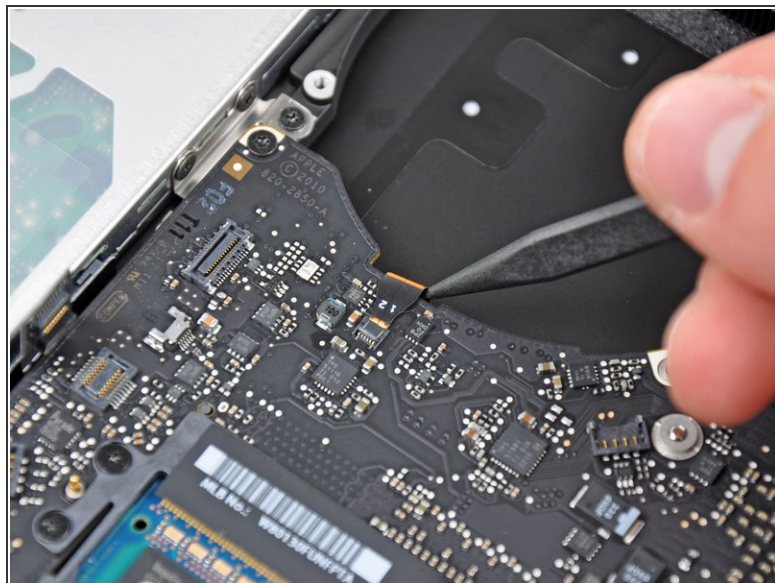
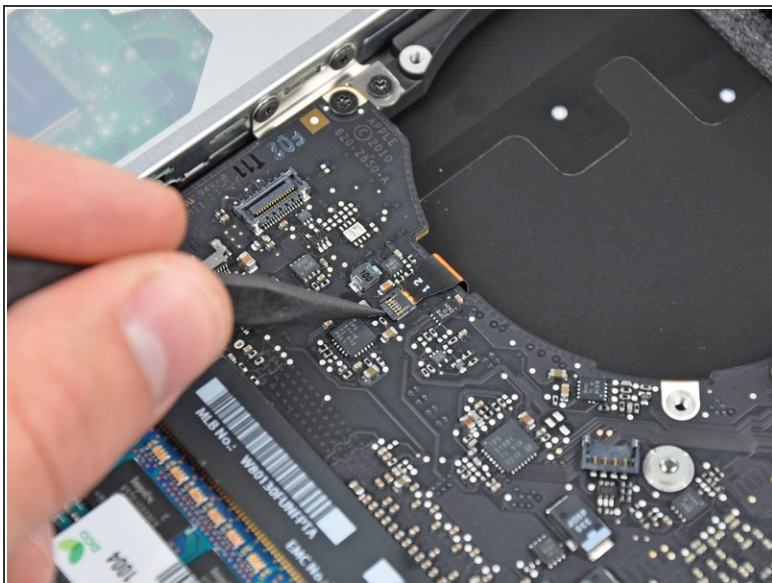
Step 12



- Grab the plastic pull tab secured to the display data cable lock and rotate it toward the DC-In side of the computer.
- Pull the display data cable straight out of its socket.

⚠ Do not pull the cable upward, as the socket is very fragile. Pull the cable parallel to the face of the logic board toward the corner of the upper case.

Step 13

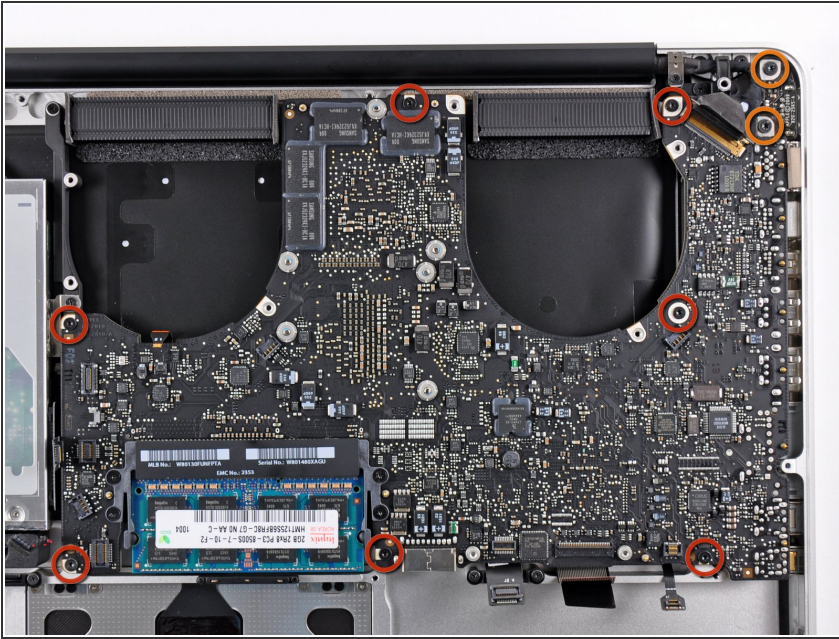


- Use the tip of a spudger or your fingernail to flip up the retaining flap on the keyboard backlight ribbon cable socket.

⚠ Be sure you are prying up on the retaining flap, **not** the socket itself.

- Pull the keyboard ribbon cable straight out of its socket.

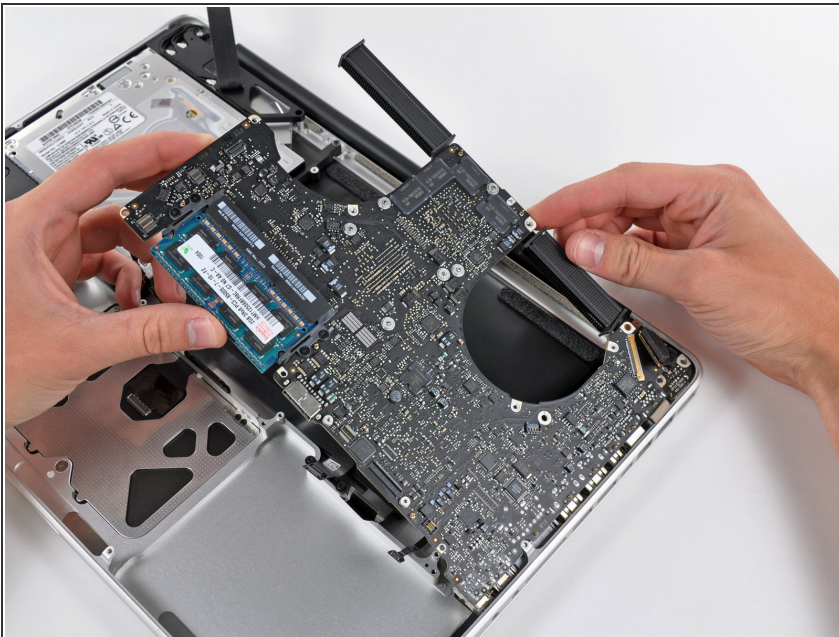
Step 14



- Remove the following screws:
 - Seven 3.3 mm T6 Torx screws securing the logic board to the upper case.
 - Two 8 mm T6 Torx screws securing the DC-In board to the upper case.

⚠ Do not remove the logic board yet! There are components on the underside of the logic board attached to the the upper case that must first be disconnected.

Step 15



- Carefully lift the logic board assembly from the left side and work it out of the upper case, minding the

port side that may get caught during removal.



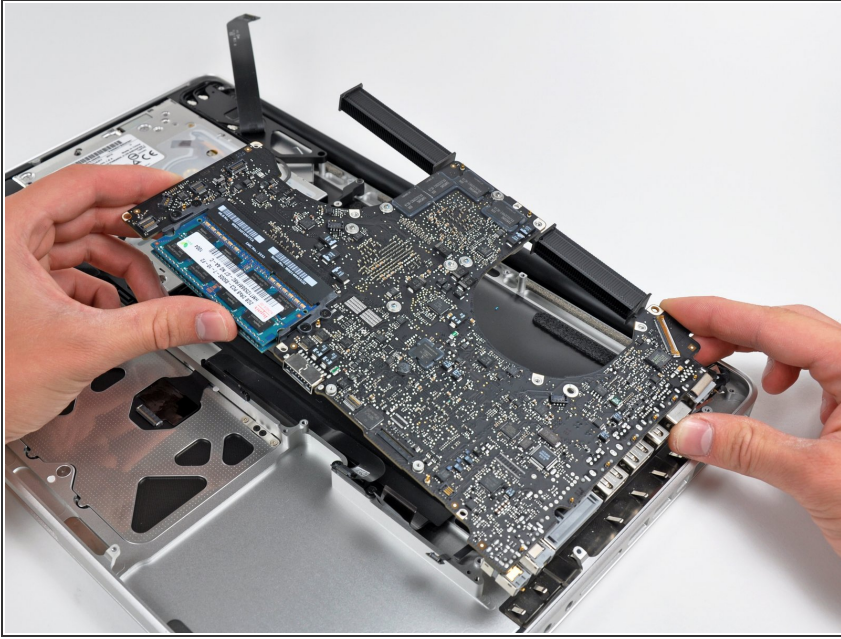
Do not entirely remove the logic board yet!

Step 16



- Lift the logic board enough to gain clearance and use a spudger to pry the microphone up off the upper case.

Step 17



- Slide the logic board away from the port openings and lift the assembly out of the upper case.
- ★ Before reinstalling the logic board, it is easiest to press the microphone down into its housing in the left speaker to keep it in place.
- ⓘ To avoid ESD damage, be sure to lay your logic board on a soft, static free surface during service.

To reassemble your device, follow these instructions in reverse order.