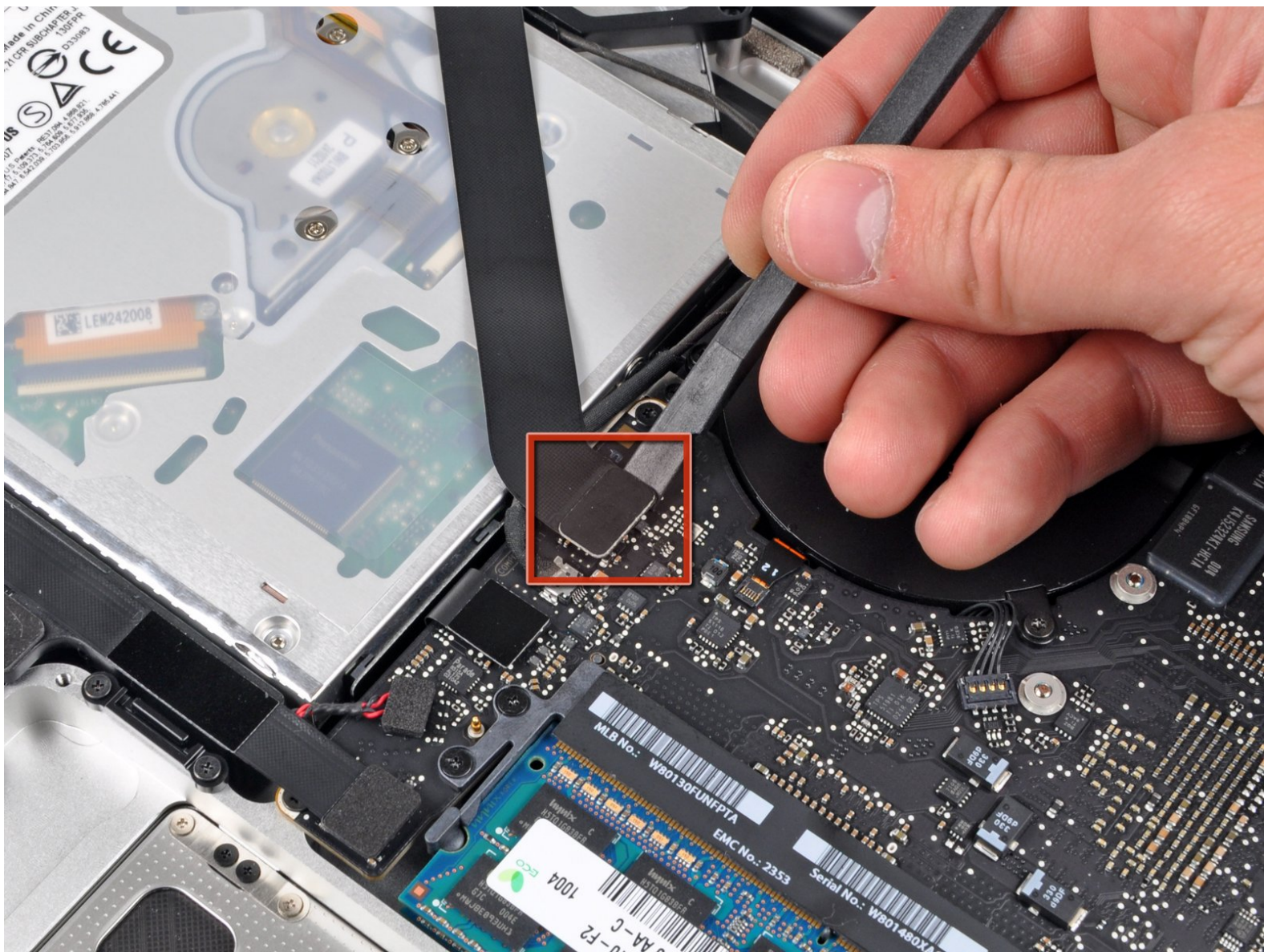




MacBook Pro 15" Unibody Mid 2010 Optical Drive Replacement

Written By: Walter Galan



INTRODUCTION

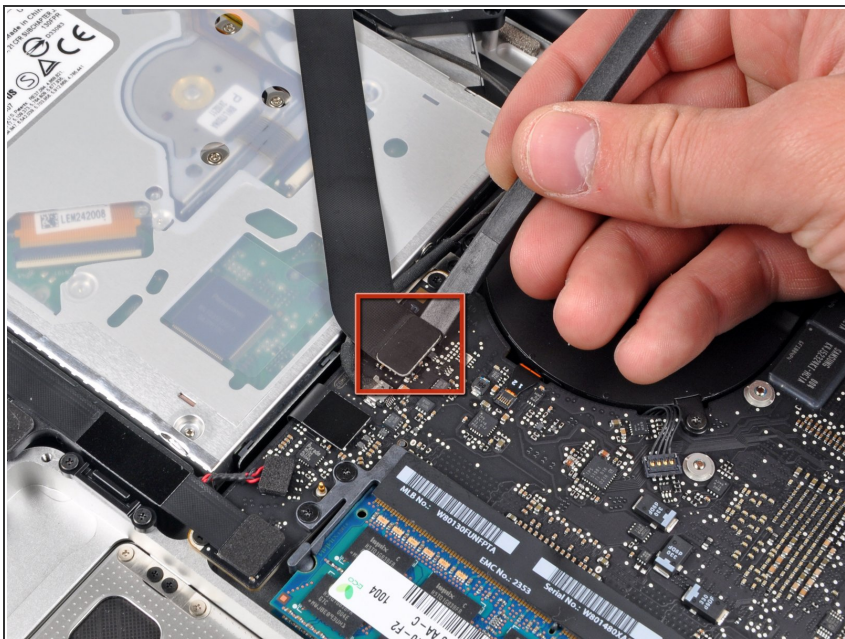
This guide is an internal guide used as a prereq.



TOOLS:

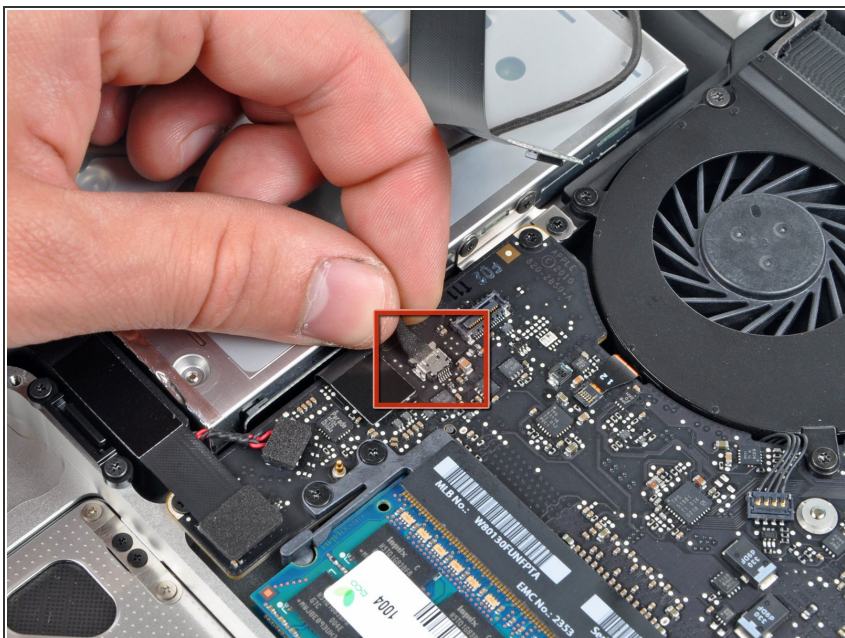
- [Spudger](#) (1)
 - [Phillips #00 Screwdriver](#) (1)
-

Step 1 — Optical Drive



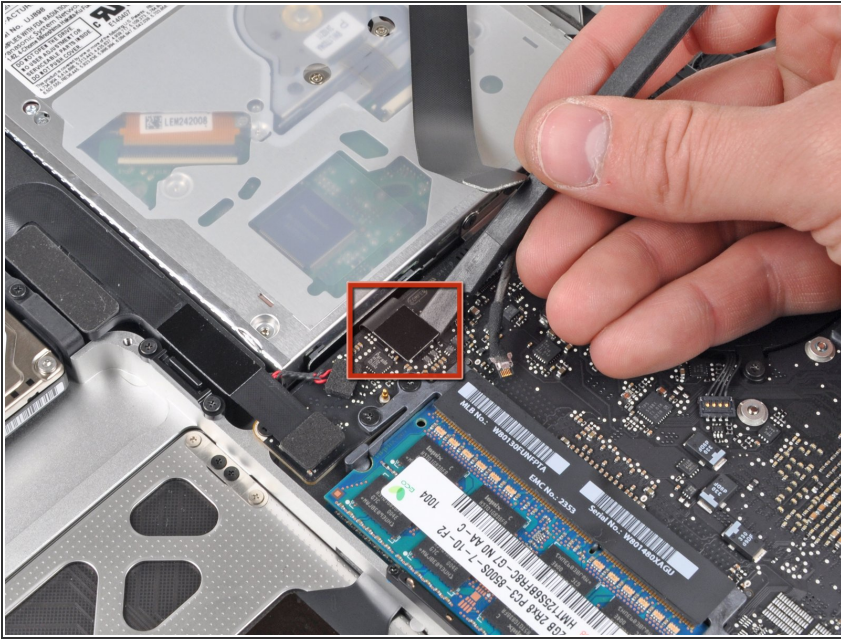
- Use the flat end of a spudger to pry the AirPort/Bluetooth ribbon cable connector up off the logic board.

Step 2



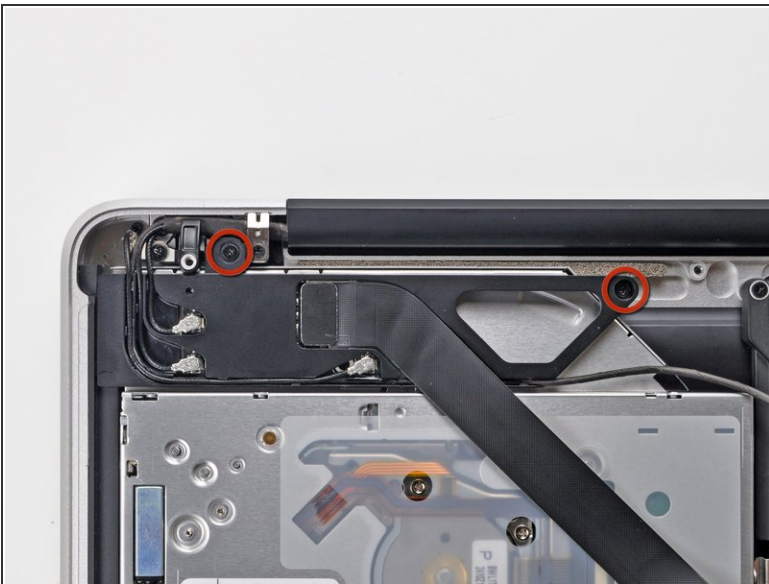
- Disconnect the camera cable by pulling its connector away from the socket (toward the optical drive) on the logic board.

Step 3



- Use the flat end of a spudger to pry the optical drive connector up off the logic board.

Step 4



- Remove the two Phillips screws securing the AirPort/Bluetooth board housing.
- Carefully rotate the AirPort/Bluetooth board housing (with AirPort/Antenna cables still attached) out of the lower case.

Step 5



- Remove the following three Phillips screws securing the optical drive to the upper case:
 - One 4.5 mm Phillips screw securing the optical drive bracket to the upper case near the fan.
 - Two 2.5 mm Phillips screws securing the optical drive to the upper case near the optical drive opening.

Step 6



- Lift the optical drive near its connector and pull it away from the upper case to remove it from the computer.

To reassemble your device, follow these instructions in reverse order.