



MacBook Pro 15" Unibody Mid 2012 Hard Drive/IR Sensor Cable Replacement

Replace the hard drive/IR sensor cable on your MacBook Pro 15" Unibody Mid 2012.

Written By: Andrew Optimus Goldheart



INTRODUCTION

Use this guide to replace the hard drive cable, which also contains the IR sensor and sleep indicator.



TOOLS:

- [Phillips #00 Screwdriver](#) (1)
- [Spudger](#) (1)



PARTS:

- [MacBook Pro 15" Unibody \(Mid 2012\) Hard Drive Cable](#) (1)

Step 1 — Lower Case



- Remove the following ten screws securing the lower case to the upper case:
 - Three 13.5 mm (14.1 mm) Phillips screws.
 - Seven 3 mm Phillips screws.

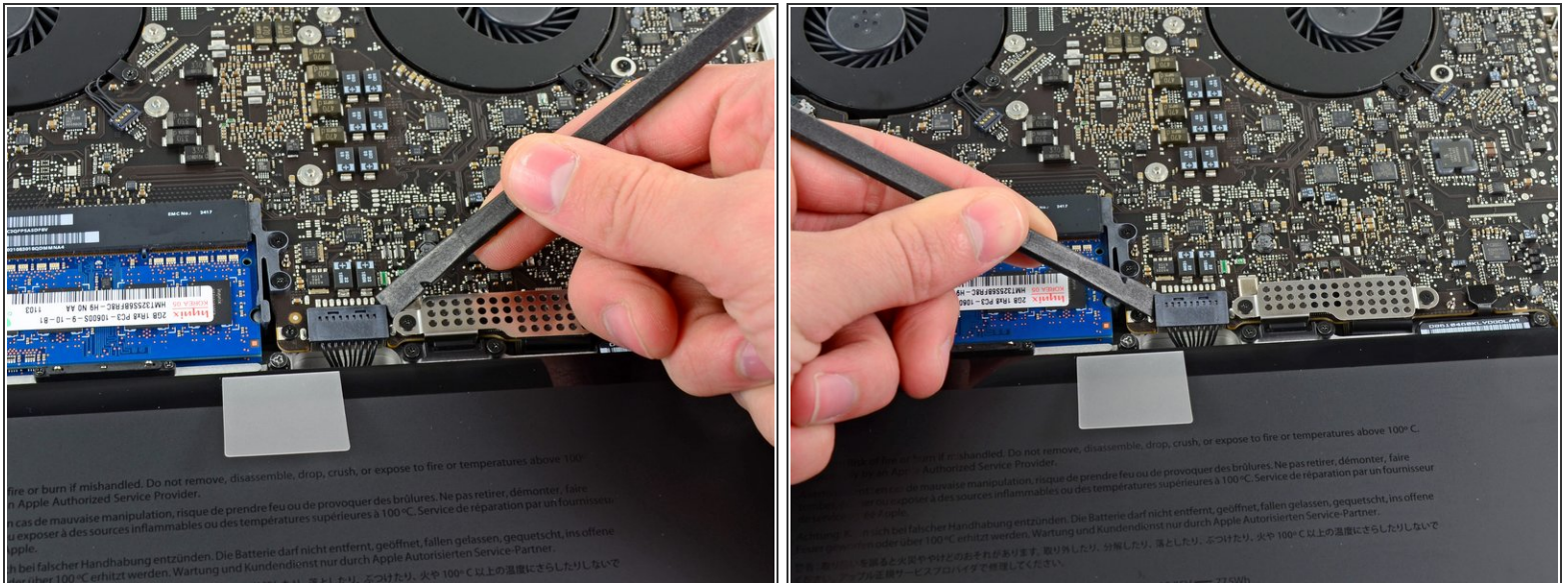
★ When removing these screws, note how they come out at a slight angle. They must be reinstalled the same way.

Step 2



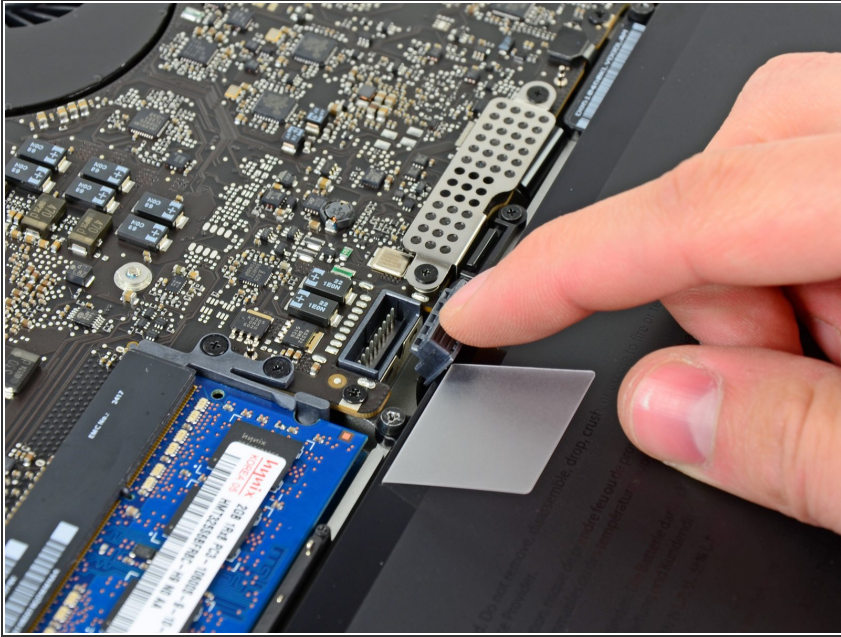
- Using both hands, lift the lower case near the vent to pop it off two clips securing it to the upper case.
- Remove the lower case and set it aside.

Step 3 — Battery Connector



- ✦ For certain repairs (e.g. hard drive), disconnecting the battery connector is not necessary but it prevents any accidental shorting of electronics on the motherboard. If you do not disconnect the battery connector, please be careful as parts of the motherboard might be electrified.
- Use the edge of a spudger to pry the battery connector upwards from its socket on the logic board.
- i It is useful to pry upward on both short sides of the connector to "walk" it out of its socket.

Step 4



- Bend the battery cable slightly away from its socket on the logic board so it does not accidentally connect itself while you work.

Step 5 — Hard Drive



- Remove two Phillips screws securing the hard drive bracket to the upper case.
- ⓘ These screws are captive to the hard drive bracket.

Step 6



- Lift the retaining bracket out of the upper case.

Step 7



- Lift the hard drive by its pull tab and pull it out of the chassis, minding the cable attaching it to the computer.

Step 8



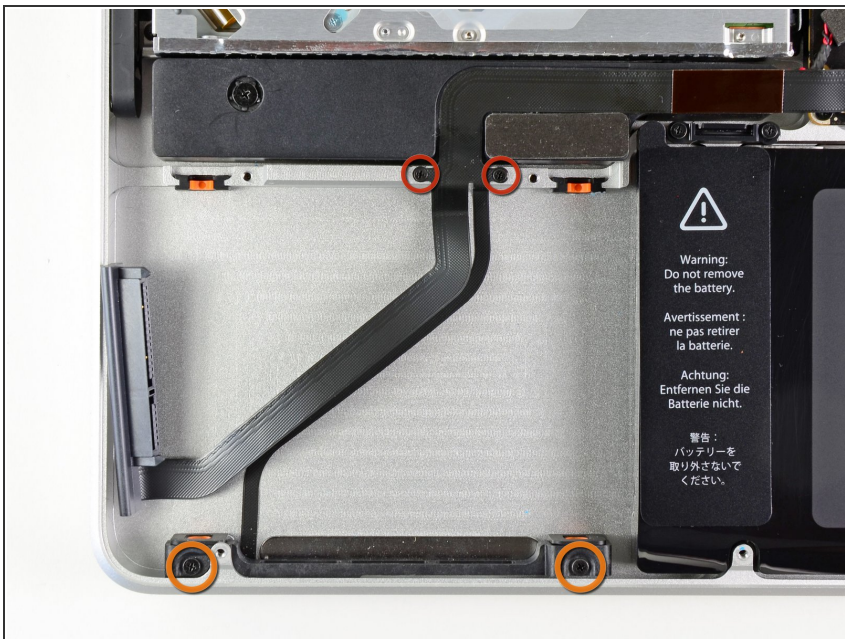
- Remove the hard drive cable by pulling its connector straight away from the hard drive.

Step 9 — Hard Drive/IR Sensor Cable



- Use the flat end of a spudger to pry the hard drive cable connector up off the logic board.

Step 10



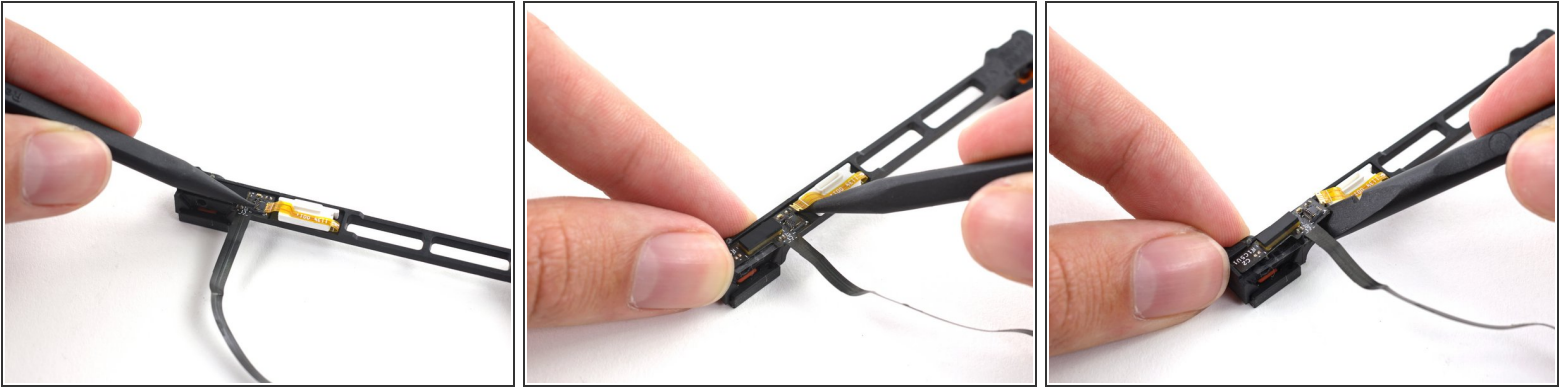
- Remove the following four screws securing the hard drive and IR sensor cable to the upper case:
 - Two 1.5 mm Phillips screws.
 - Two 4 mm Phillips screws.



Step 11



- Slide the hard drive and IR sensor bracket away from the edge of the upper case.
- Carefully peel the hard drive and IR sensor cable from the upper case.
- Lift the hard drive and IR sensor assembly out of the upper case.

Step 12



-  Your replacement part may or may not come with the front (sensor) bracket. If it does not, you'll need to transfer it to your new cable.
- Use the tip of a spudger to flip the ZIF connector on the hard drive cable.
 - Gently pull the sensor bracket cable out of the ZIF connector.
 - Use the flat end of a spudger to pry the hard drive cable up off the sensor bracket.
-  Remove the adhesive backing from your new hard drive cable, stick it onto the sensor bracket, and connect the sensor bracket cable.

To reassemble your device, follow these instructions in reverse order.