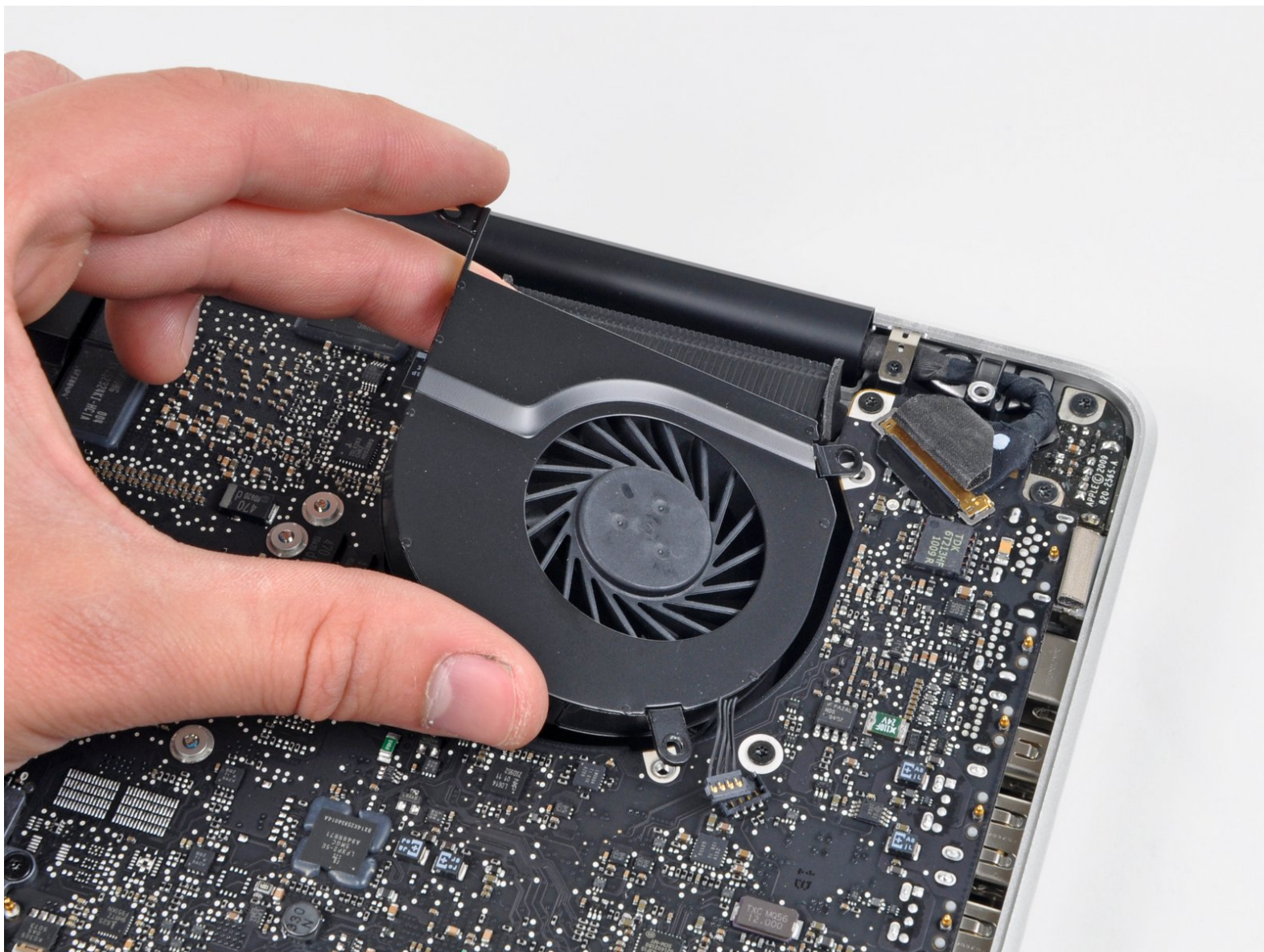




MacBook Pro 15" Unibody Mid 2012 Left Fan Replacement

Replace the left fan in your MacBook Pro 15" Unibody Mid 2012.

Written By: Andrew Optimus Goldheart



INTRODUCTION

Replace a faulty fan to keep things cool.



TOOLS:

- [Phillips #00 Screwdriver](#) (1)
- [Spudger](#) (1)
- [T6 Torx Screwdriver](#) (1)



PARTS:

- [MacBook Pro 15" Late 2008 through Mid 2012 \(excluding Mid 2009 2.53 GHz\) Left Fan](#) (1)

Step 1 — Lower Case



- Remove the following ten screws securing the lower case to the upper case:
 - Three 13.5 mm (14.1 mm) Phillips screws.
 - Seven 3 mm Phillips screws.

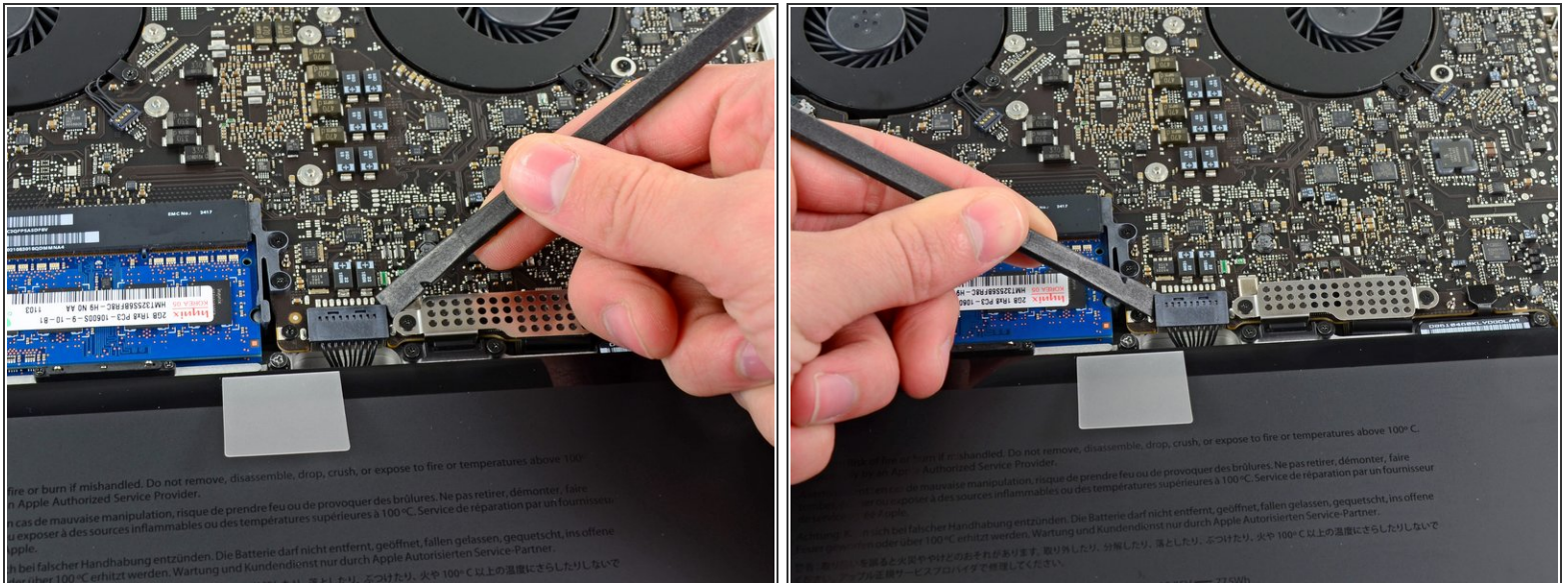
★ When removing these screws, note how they come out at a slight angle. They must be reinstalled the same way.

Step 2



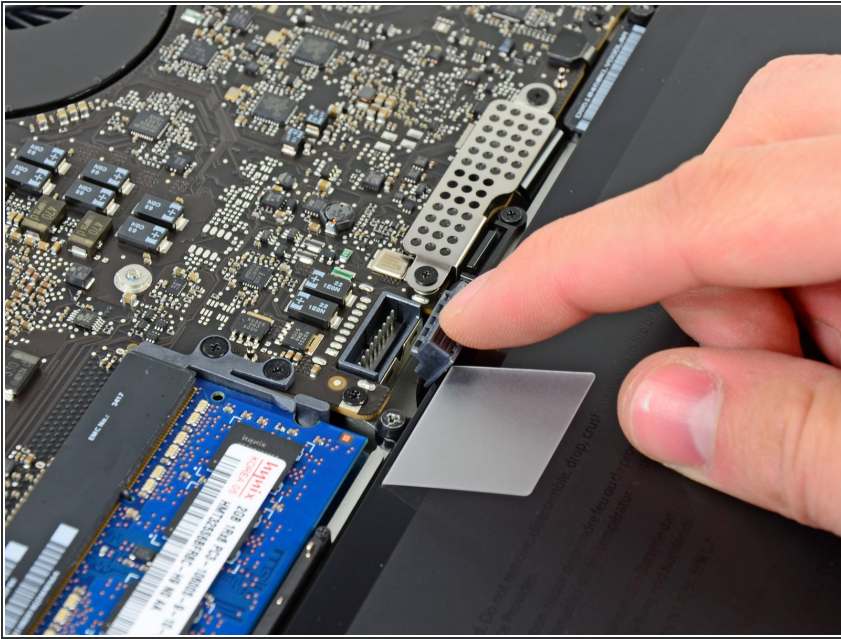
- Using both hands, lift the lower case near the vent to pop it off two clips securing it to the upper case.
- Remove the lower case and set it aside.

Step 3 — Battery Connector



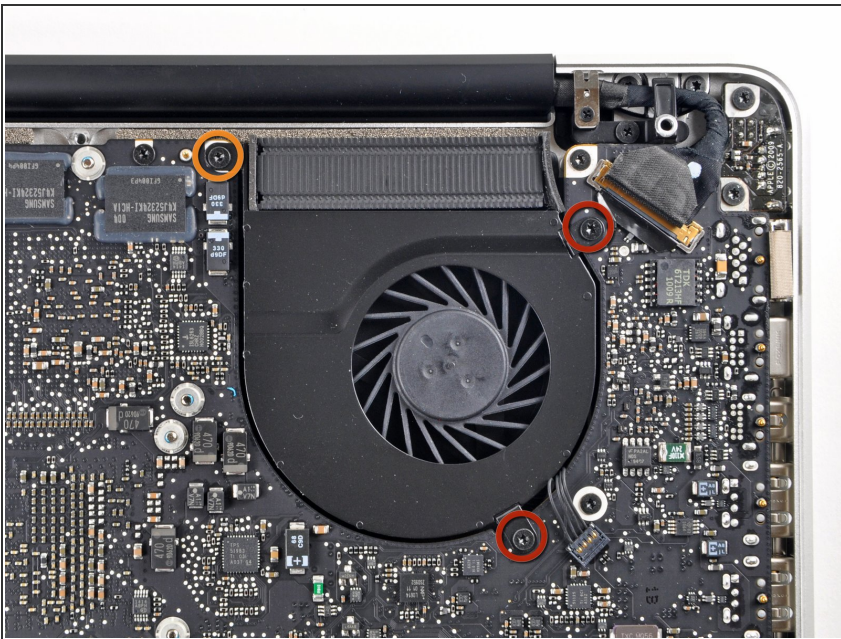
- ☑ For certain repairs (e.g. hard drive), disconnecting the battery connector is not necessary but it prevents any accidental shorting of electronics on the motherboard. If you do not disconnect the battery connector, please be careful as parts of the motherboard might be electrified.
- Use the edge of a spudger to pry the battery connector upwards from its socket on the logic board.
- ℹ It is useful to pry upward on both short sides of the connector to "walk" it out of its socket.

Step 4



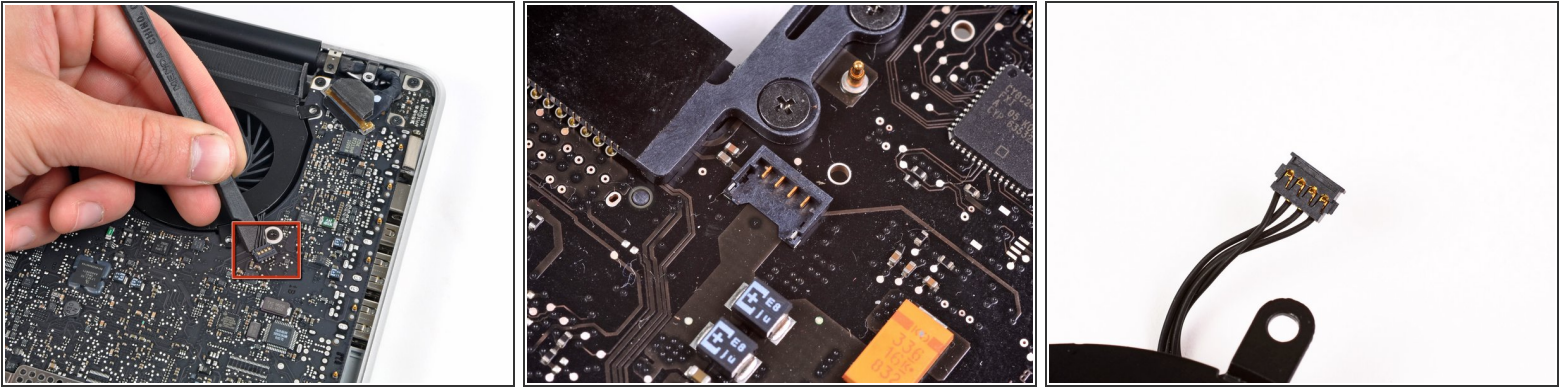
- Bend the battery cable slightly away from its socket on the logic board so it does not accidentally connect itself while you work.

Step 5 — Left Fan





- Remove the following three screws securing the left fan to the logic board:
 - Two 3.5 mm T6 Torx screws.
 - One 4.2 mm T6 Torx screw.


Step 6



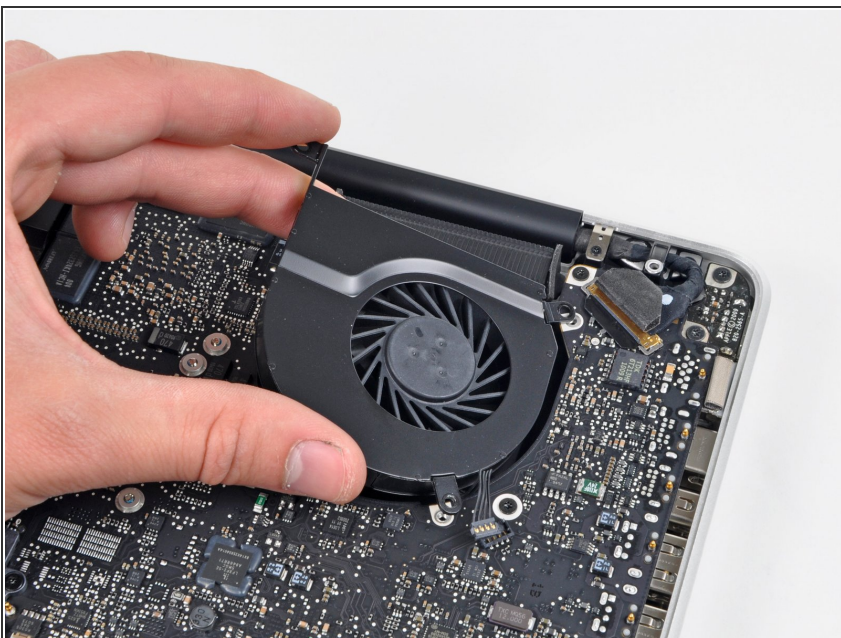
- Use the flat end of a spudger to disconnect the left fan connector from the logic board.

 It is useful to twist the spudger axially from beneath the fan cable wires to release the connector.

 The fan socket and the fan connector can be seen in the second and third pictures. Be careful not to break the plastic fan socket off the logic board as you use your spudger to lift the fan connector straight up and out of its socket.

 The layout of the logic board shown in the second picture may look slightly different than your machine but the fan socket is the same.

Step 7



- Lift the left fan out of the upper case.

To reassemble your device, follow these instructions in reverse order.