



MacBook Pro 17" Models A1151 A1212 A1229 and A1261 Clutch Assembly Replacement

Written By: Andrew Bookholt



INTRODUCTION

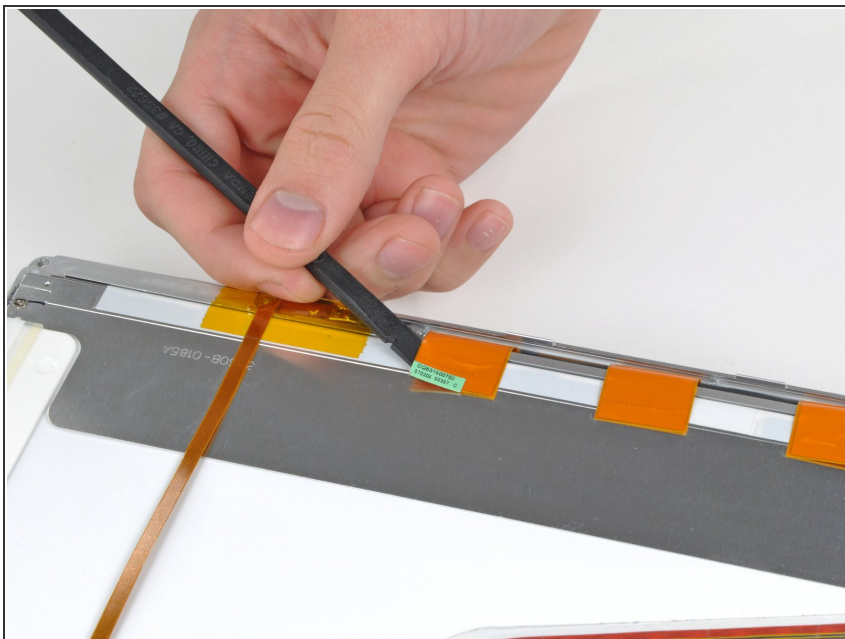
This guide is an internal prerequisite.



TOOLS:

- [Spudger](#) (1)
 - [Phillips #00 Screwdriver](#) (1)
 - [iFixit Opening Tools](#) (1)
-

Step 1 — Clutch Assembly



- Use the flat end of a spudger to carefully peel off the three antenna straps stuck to the lower edge of the LCD.

Step 2



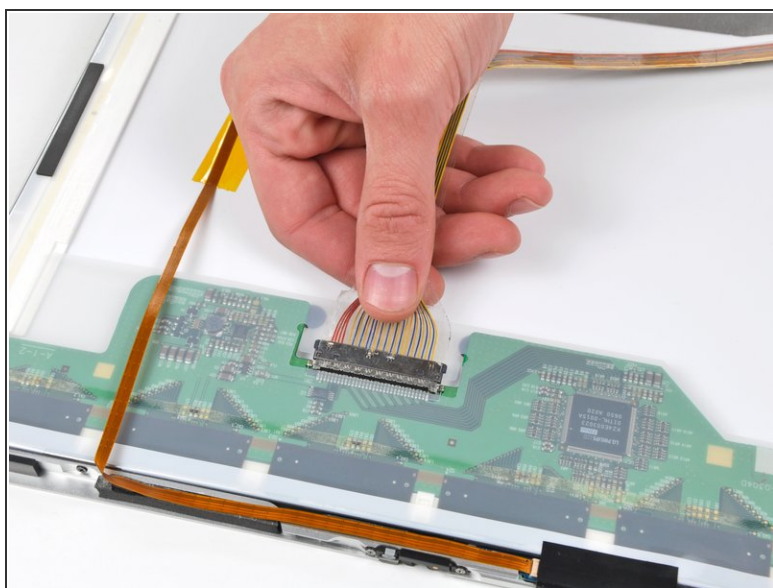
- Remove the five Phillips screws securing the clutch cover to the bottom edge of the front display bezel.

Step 3



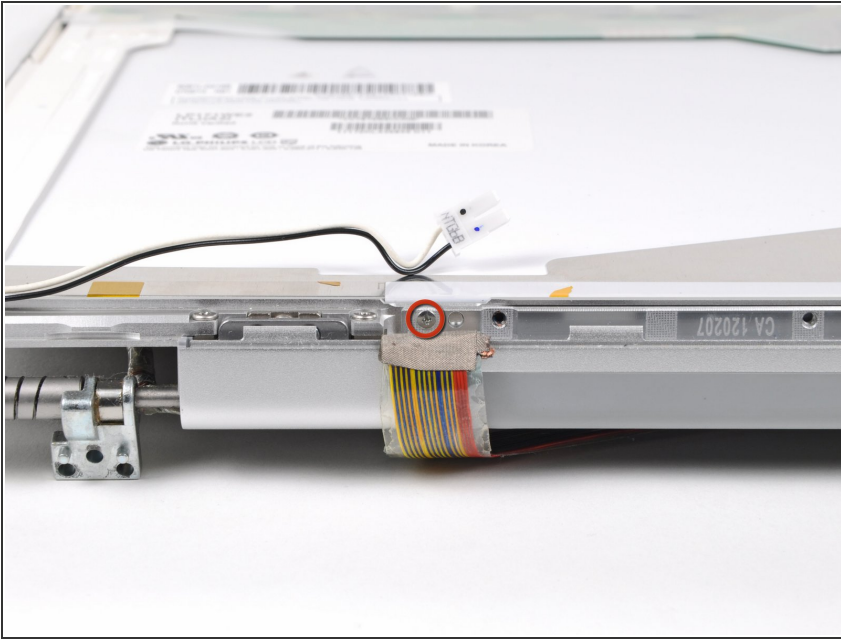
- Remove the two pieces of tape securing the display data cable to the LCD.

Step 4



- Disconnect the display data cable from the LCD by pulling it toward the bottom edge of the display.

Step 5



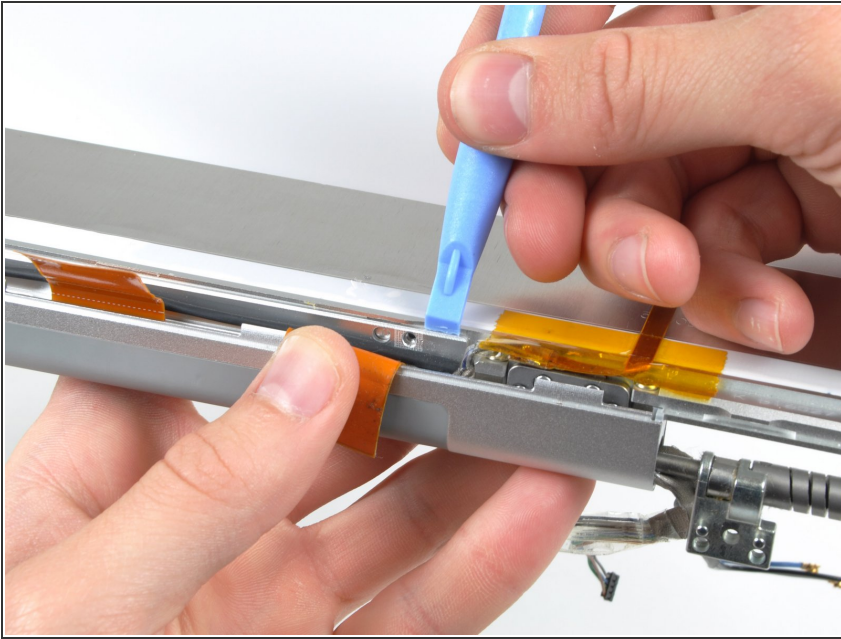
- Move the display data cable out of the way to remove the Phillips screw hidden underneath.

Step 6



- While pulling the clutch assembly away from the clutch hinge with one hand, insert an iPod opening tool between the clutch cover and the front display bezel to lift the clutch cover over the retaining pin on the front display bezel.
- Pull the clutch assembly away from the front display bezel.

Step 7



- Repeat the process covered in the previous step to free the other side of the clutch assembly from the front display bezel.

Step 8



- Remove the clutch assembly from the front display bezel, minding any cables that may get caught.

To reassemble your device, follow these instructions in reverse order.