



# MacBook Pro 17" Unibody Bluetooth Board Replacement

Regain Bluetooth connectivity by replacing your MacBook Pro 17" Unibody's Bluetooth board.

Written By: Andrew Bookholt



# INTRODUCTION

Use this guide to replace your Bluetooth board.



## TOOLS:

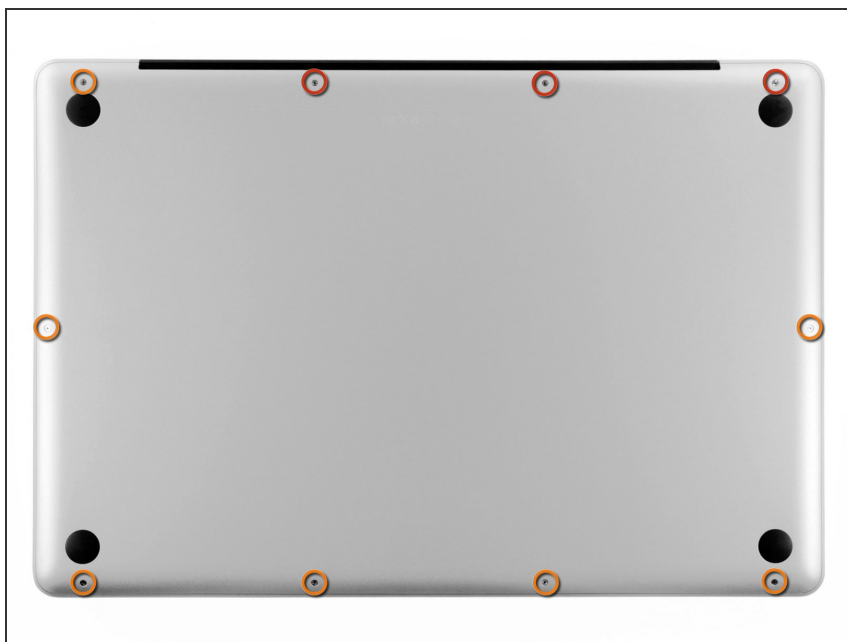
- [Phillips #00 Screwdriver](#) (1)
- [Spudger](#) (1)



## PARTS:

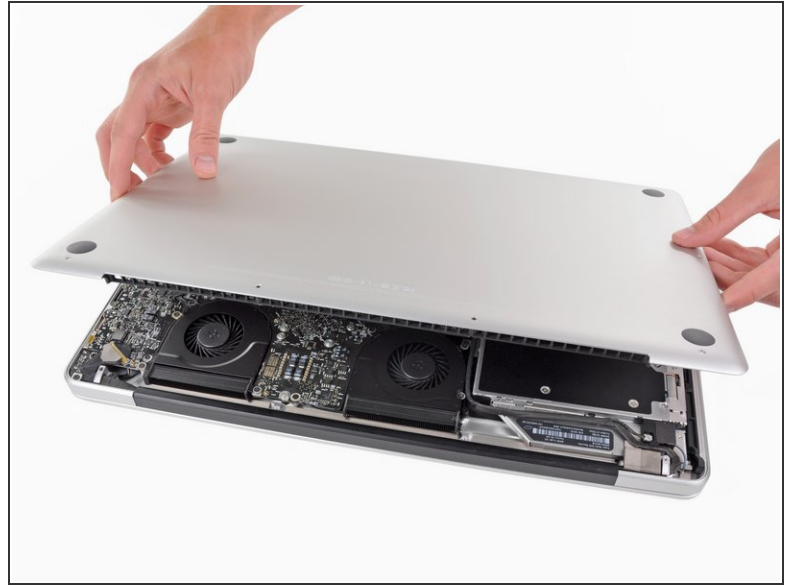
- [MacBook Pro 17" Unibody \(Early/Mid 2009\) Bluetooth Board](#) (1)

## Step 1 — Lower Case



- Remove the following ten screws securing the lower case to the upper case:
  - Three 13.5 mm Phillips screws.
  - Seven 3 mm Phillips screws.

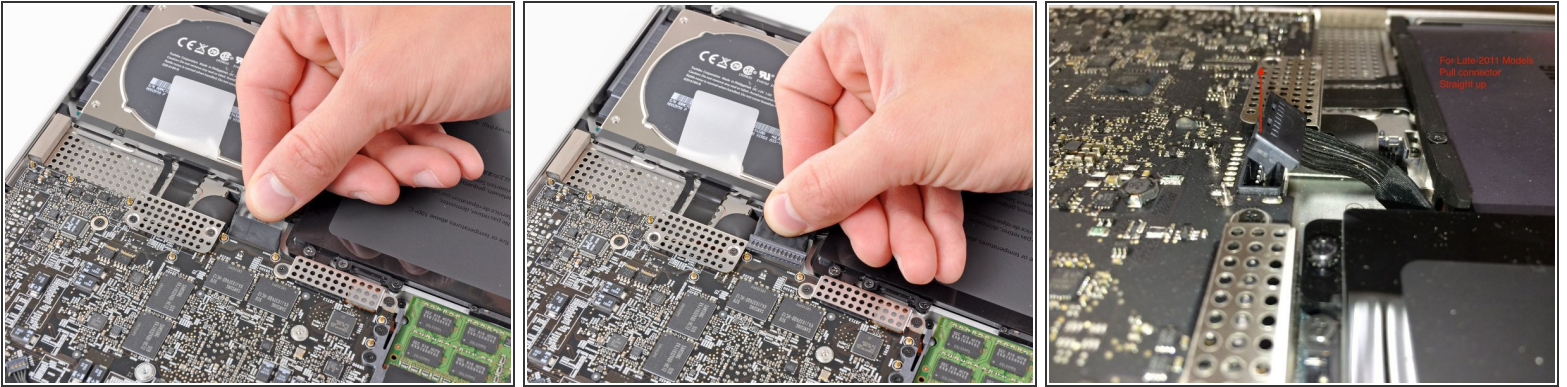
## Step 2



- Wedge your fingers between the lower case and the vent, and lift upward to release the two clips holding the lower case to the upper case.
  - ☑ During reassembly, carefully align the lower case and then press it firmly until both clips engage.
- Remove the lower case.



## Step 3 — Battery



**⚠** Whenever working near the logic board, it is always wise to first disconnect the battery to avoid short circuits.

- If present, grab the plastic tab attached to the battery connector and pull it toward the front edge of the device. For Late-2011 models the battery connector will not have a tab and is simply a plug that inserts straight down into the motherboard--to remove pry the plug straight up.
- i** If the plastic tab is missing, use a spudger to pry the connector up from its socket.
- ★** Pull the tab parallel to the face of the logic board.

## Step 4 — Bluetooth Board



- Carefully pull the Bluetooth cable toward the fans to disconnect it from the Bluetooth board.
- i** Pull the cable parallel to the face of the optical drive.

## Step 5



- Use the flat end of a spudger to peel the thin plastic cover off the top and sides of the Bluetooth board housing.

## Step 6



- Use the flat end of a spudger to pry the Bluetooth antenna connector up and off its socket on the Bluetooth board.

## Step 7



- Remove the two 2.2 mm Phillips screws securing the Bluetooth housing to the side of the optical drive.

## Step 8



- De-route the camera cable from its slot in the Bluetooth housing and remove the Bluetooth board from the upper case.

To reassemble your device, follow these instructions in reverse order.