



MacBook Pro 17" Unibody Hard Drive Removal/Installation Replacement

Installing and Removing a Hard Drive

Written By: jgreenmun





TOOLS:

- [Essential Electronics Toolkit \(1\)](#)
-

Step 1 — Hard Drive Removal/Installation



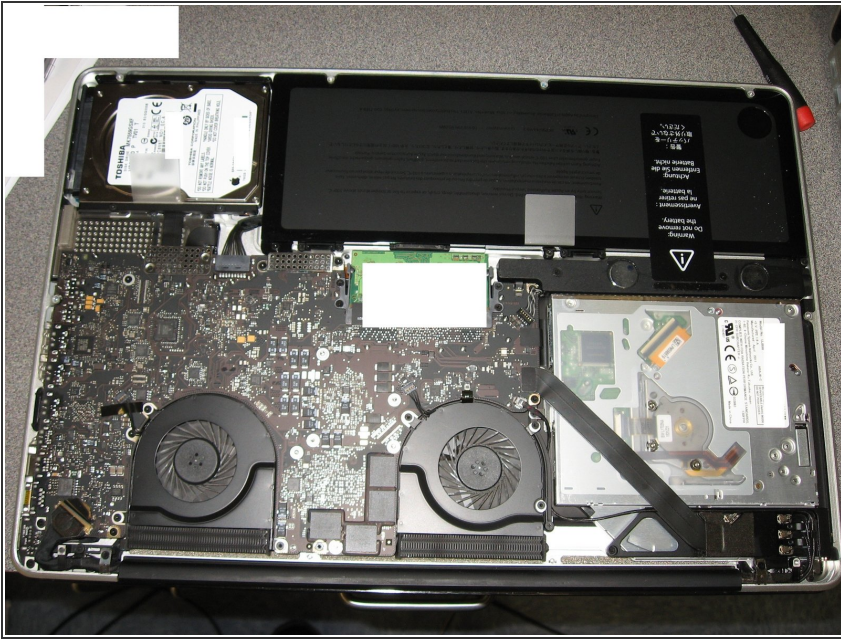
- Turn the computer over and remove all of the screws that holds together the bottom of the case.
- The bottom left three screws are longer. Set those aside for reassembly

Step 2



- Here are the three larger screws. The smaller ones fit the remaining holes

Step 3



- Delicately lift the case off. The hard drive is visible. There is a bracket with two black screws holding it in place. Remove the bracket and you have access to the hard drive.
- Remove the interface from the SATA drive and leave the ribbon connected to the mobo.

To reassemble your device, follow these instructions in reverse order.