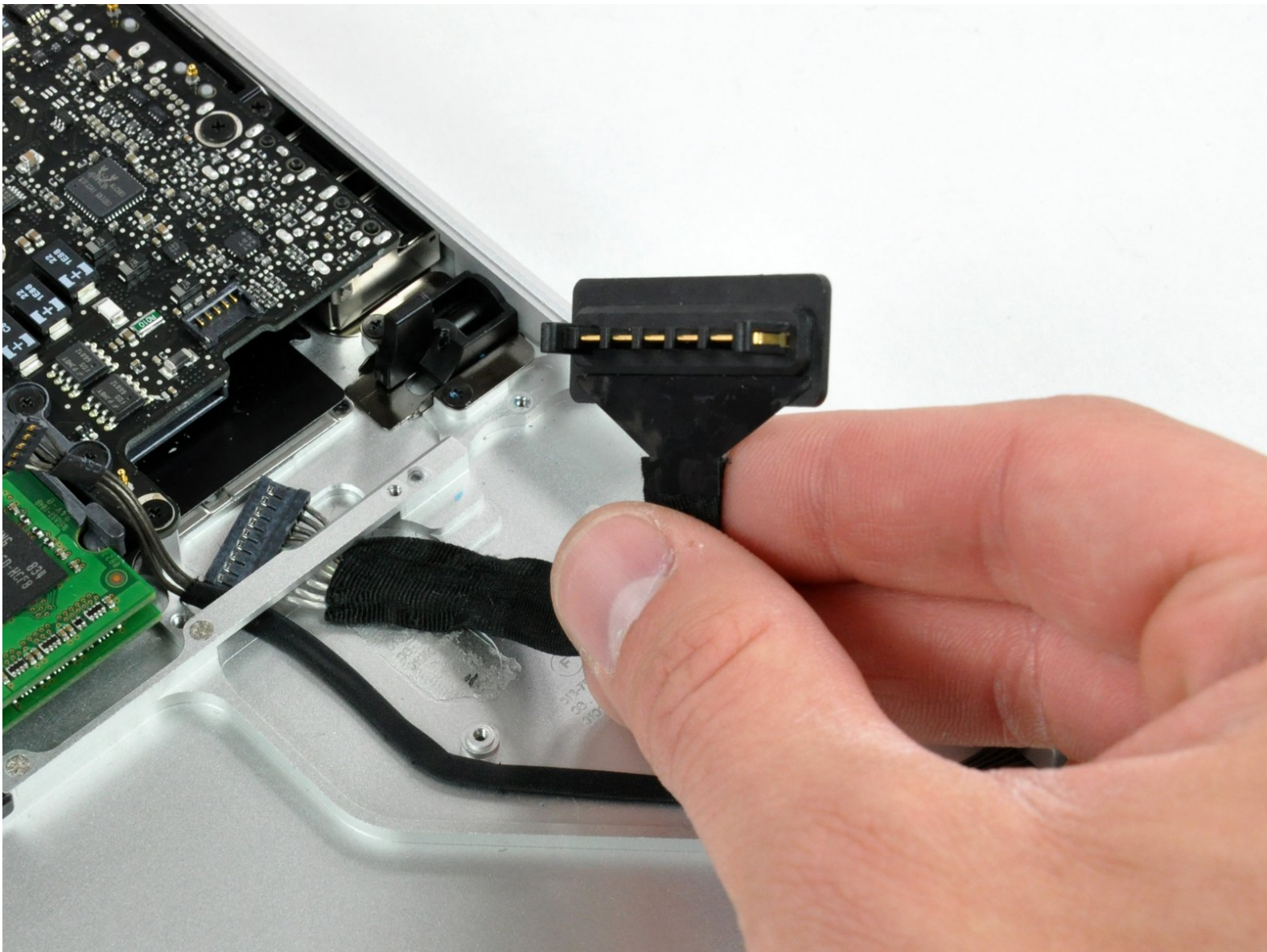




MacBook Unibody Model A1278 Battery Connector Replacement

Written By: Walter Galan



INTRODUCTION

Charges battery and connects battery to logic board.



TOOLS:

- [Phillips #00 Screwdriver](#) (1)



PARTS:

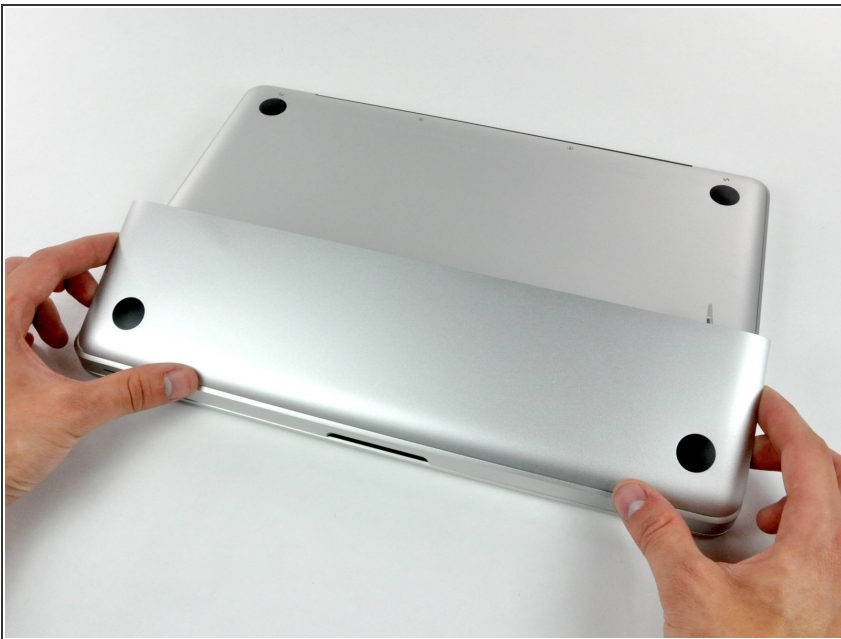
- [MacBook Unibody \(Model No. A1278\) Battery Connector](#) (1)

Step 1 — Access Door



- With the case closed, place the Unibody top-side down on a flat surface.
- Depress the grooved side of the access door release latch enough to grab the free end. Lift the release latch until it is vertical.

Step 2



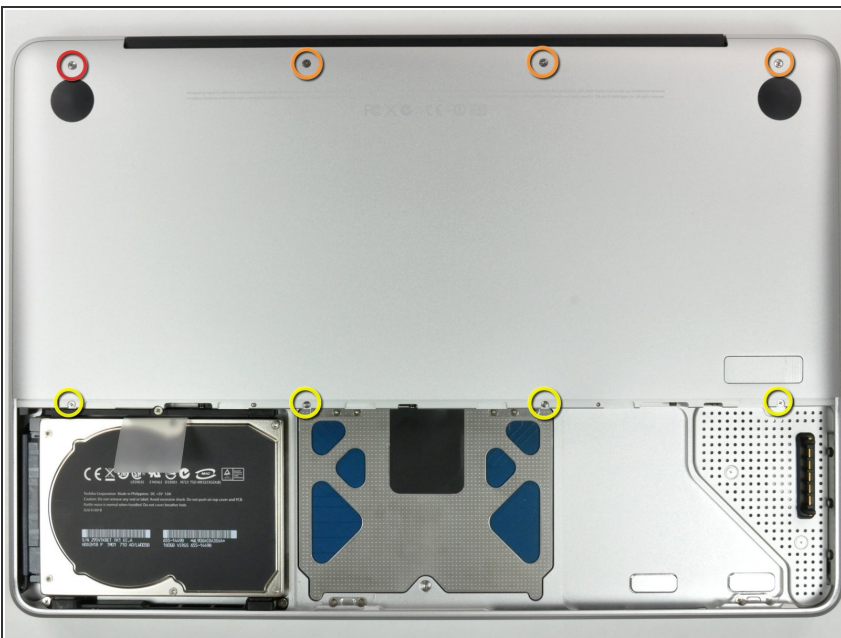
- The access door should now be raised enough to lift it up and out of the Unibody.

Step 3 — Battery



- ❗ Be sure the access door release latch is vertical before proceeding.
- Grab the white plastic tab and pull the battery up and out of the Unibody.

Step 4 — Lower Case



- Remove the following eight screws securing the lower case to the chassis:
 - One 3 mm Phillips screw.
 - Three 13.5 mm Phillips screws.
 - Four 3.5 mm Phillips screws.

Step 5



- Using both hands, lift and remove the lower case off the upper case.

Step 6 — Mid Wall



- Remove the four 10.3 mm Phillips screws securing the mid wall to the upper case.

Step 7



- Lift the mid wall out of the upper case.

Step 8 — Battery Connector



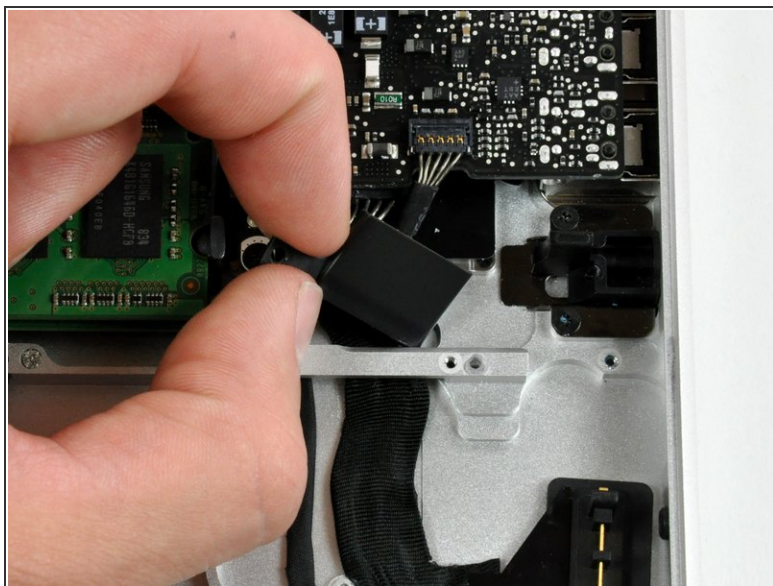
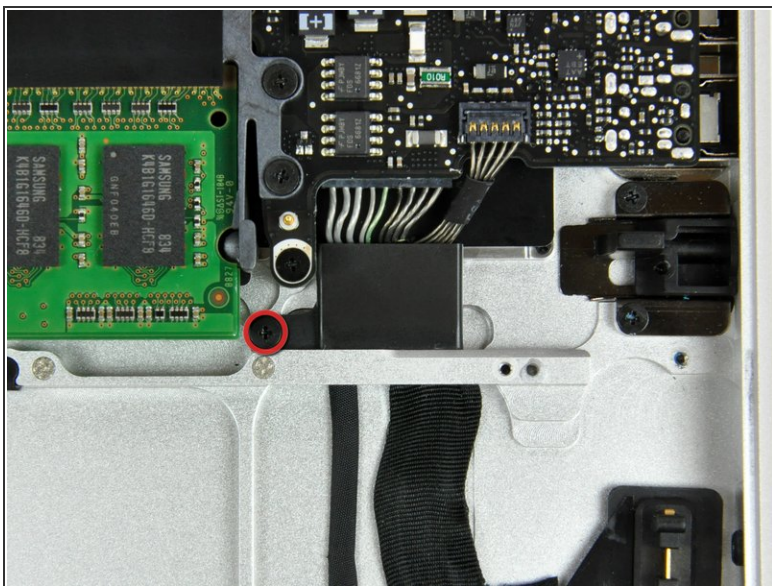
- Remove the following screws securing the battery connector cover to the upper case:
 - One 2.5 mm Phillips screw.
 - Two 1.5 mm Phillips screws.

Step 9



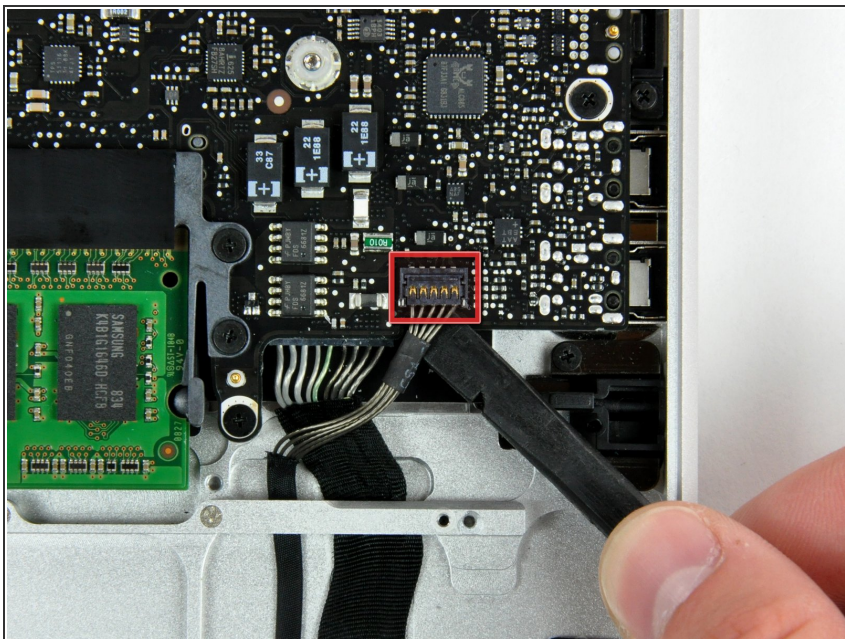
- Lift the battery connector cover out of the upper case.

Step 10



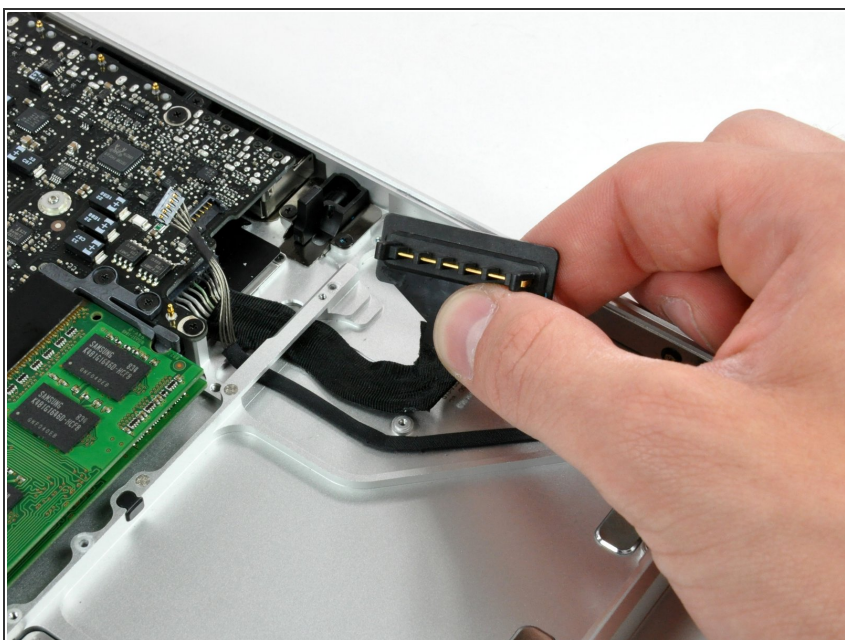
- Remove the single 2.7 mm Phillips screw securing the battery cable cover to the upper case.
- Lift the battery cable cover out of the upper case.

Step 11



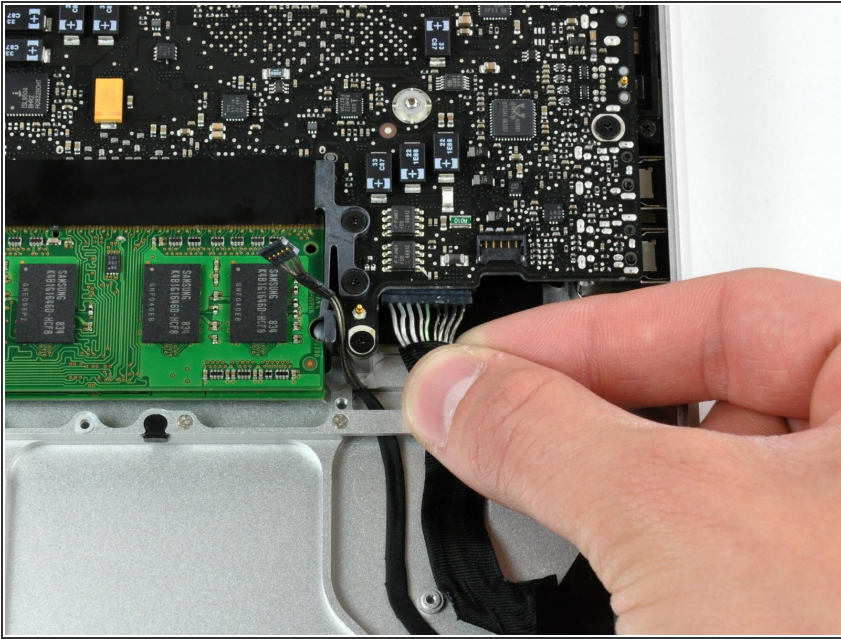
- Using a spudger, pry the battery level indicator cable connector straight up off the logic board.

Step 12



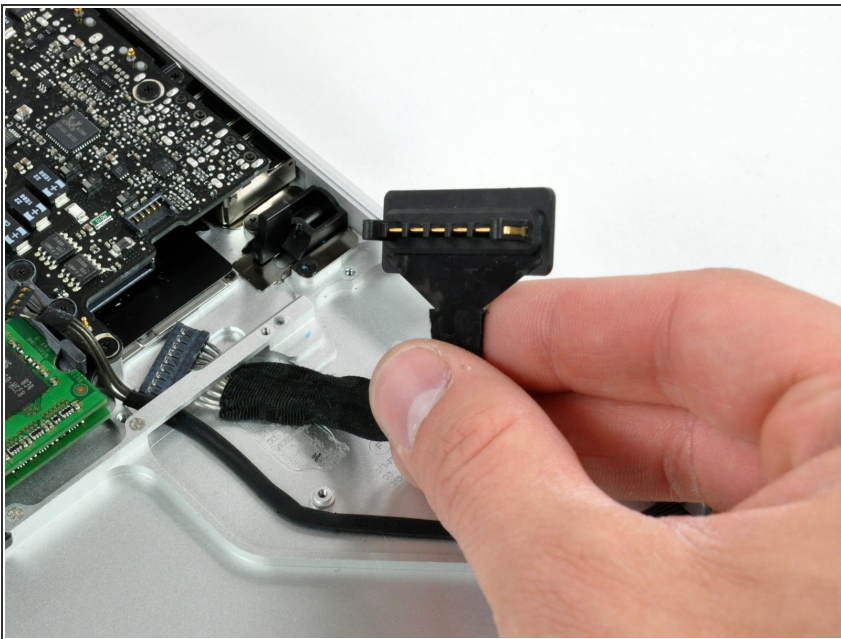
- Peel the battery connector cable off the adhesive securing it to the upper case.

Step 13



- Pull the battery connector cable slightly toward the logic board to give yourself enough slack to grab the cable with your fingers.
- Disconnect the cable by pulling it straight away from the logic board.

Step 14



- De-route the battery connector cable through the gap in the upper case and remove it from the computer.

To reassemble your device, follow these instructions in reverse order.