



# MacBook Unibody Model A1342 AirPort/Bluetooth Board Replacement

Written By: Walter Galan



# INTRODUCTION

Wireless connectivity issues? Use this guide to replace an inoperative AirPort/Bluetooth board.



## TOOLS:

- [Phillips #00 Screwdriver](#) (1)
- [Spudger](#) (1)
- [T8 Torx Screwdriver](#) (1)



## PARTS:

- [MacBook Unibody \(Model No. A1342 Late 2009\) AirPort/Bluetooth Board](#) (1)
- [MacBook Unibody \(Model No. A1342 Mid 2010\) AirPort/Bluetooth Board](#) (1)


## Step 1 — Lower Case



- Remove the eight 4 mm Phillips screws securing the lower case to the MacBook.

## Step 2




 The lower case is constructed of rubber-coated aluminum. Do not excessively bend the aluminum during removal, as any permanent deformation will cause tolerance issues after reassembly.


- Slightly lift the lower case near the vent opening.
- Continue running your fingers between the lower and upper cases until the upper case pops off its retaining clips.

 The location of these three clips is shown in the third picture.

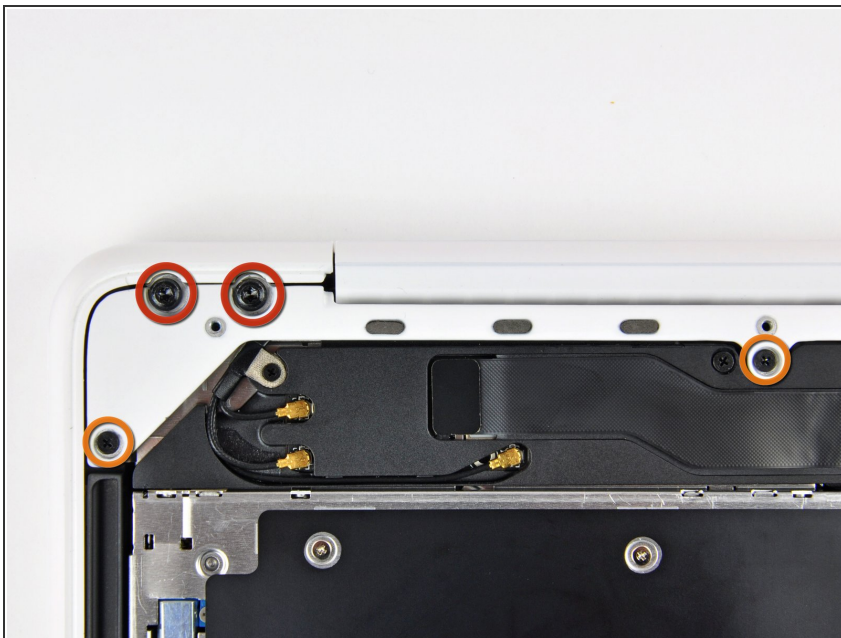
## Step 3 — Battery



 For precautionary purposes, we advise that you disconnect the battery connector from the logic board to avoid any electrical discharge. This step is **optional** and is not required.

- Use the flat end of a spudger to lift the battery connector up out of its socket on the logic board.
-  It may be easier to use your fingernails to lift up on both sides of the connector.

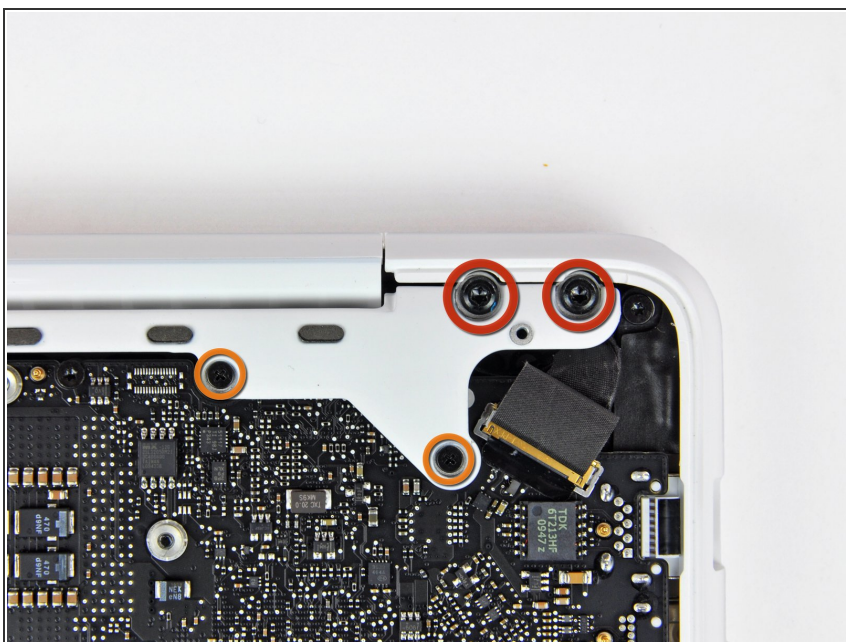
## Step 4 — Rear Vent



- Remove the following screws from the optical drive side of the rear vent:
  - Two 10 mm T8 Torx
  - Two 5.2 mm Phillips



## Step 5



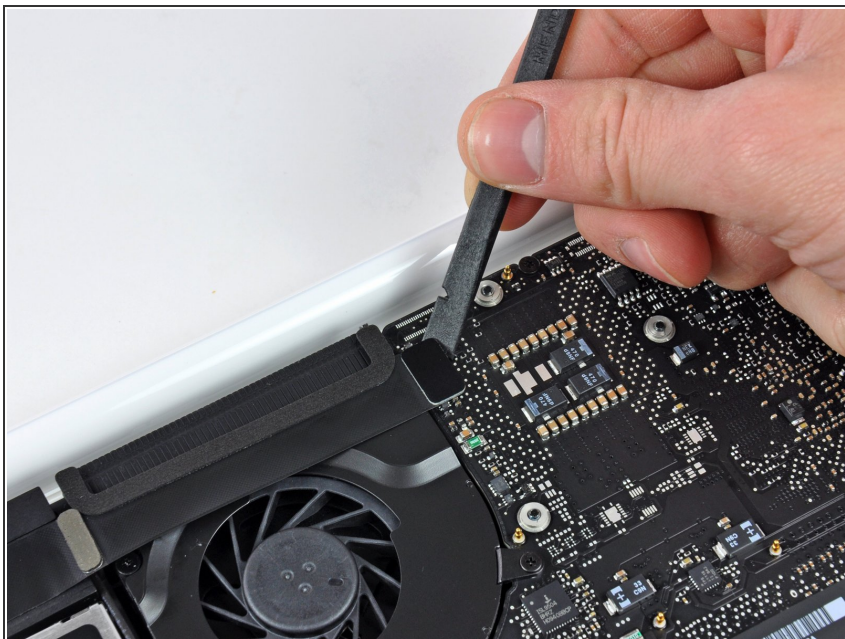
- Remove the following screws from the port side of rear vent:
  - Two 10 mm T8 Torx
  - Two 5.2 mm Phillips

## Step 6



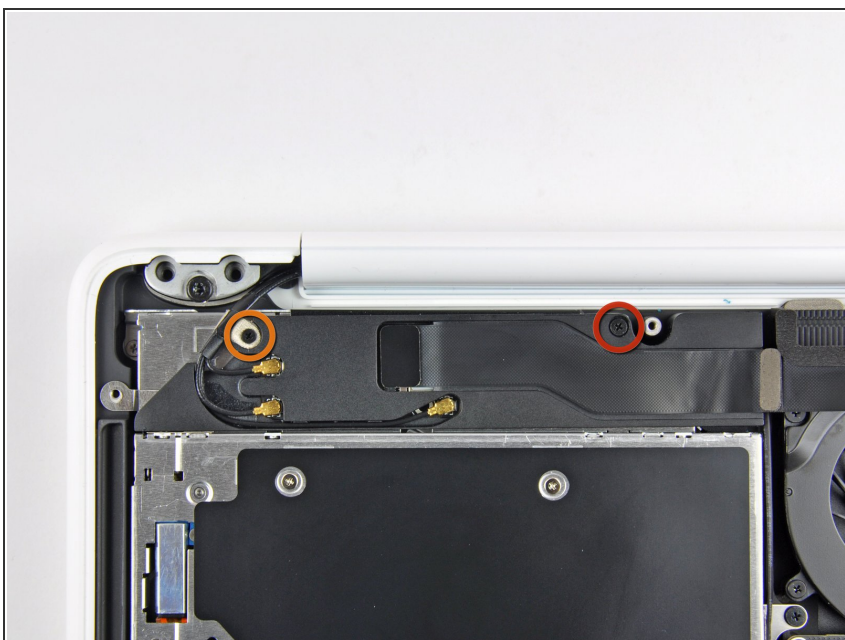
- Carefully lift the rear vent out of the upper case.

## Step 7 — Rear Speaker Assembly



- Use the flat end of a spudger to pry the AirPort/Bluetooth cable connector up off the logic board.

## Step 8



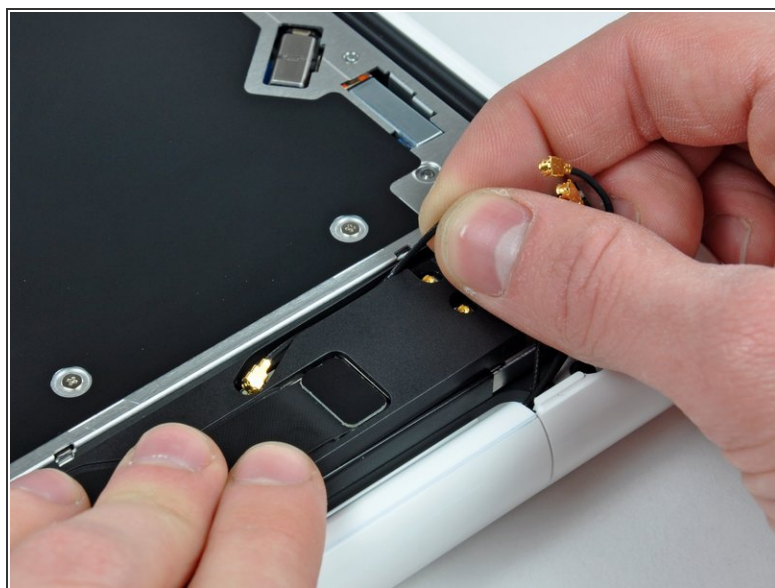
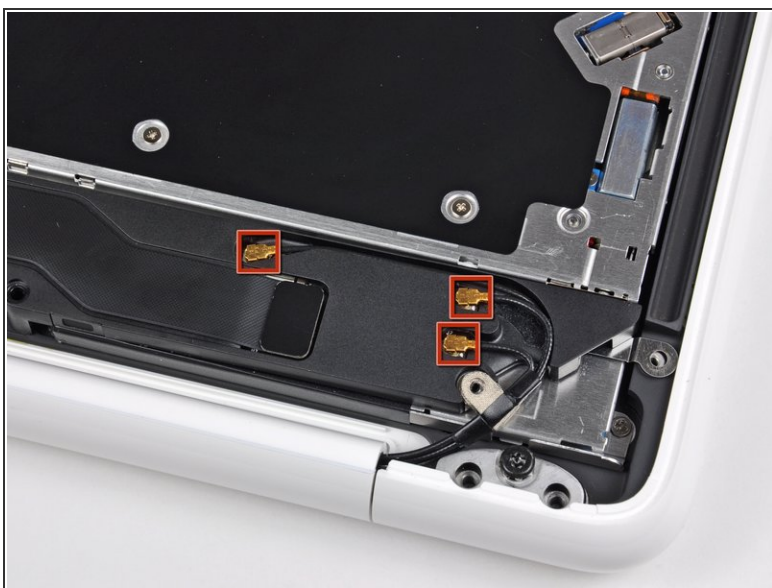
- Remove the following screws securing the right speaker assembly to the upper case:
  - One 12 mm Phillips screw.
  - One 3 mm Phillips screw.

## Step 9



- Remove the single 2.2 mm Phillips screw inserted horizontally into the side of the optical drive.

## Step 10



- Pry the AirPort and Bluetooth antenna connectors (3 total) up off the AirPort/Bluetooth card.
- De-route the long antenna from its channel in the rear speaker housing.



## Step 11



- Use the flat end of a spudger to pry the rear speaker cable connector up off the logic board.

## Step 12



- Remove the rear speaker assembly from the upper case.



## Step 13



- Carefully peel the AirPort/Bluetooth cable from its channel within the rear speaker assembly.
- Use the flat end of a spudger to pry the AirPort/Bluetooth cable up off the rear speaker.

## Step 14



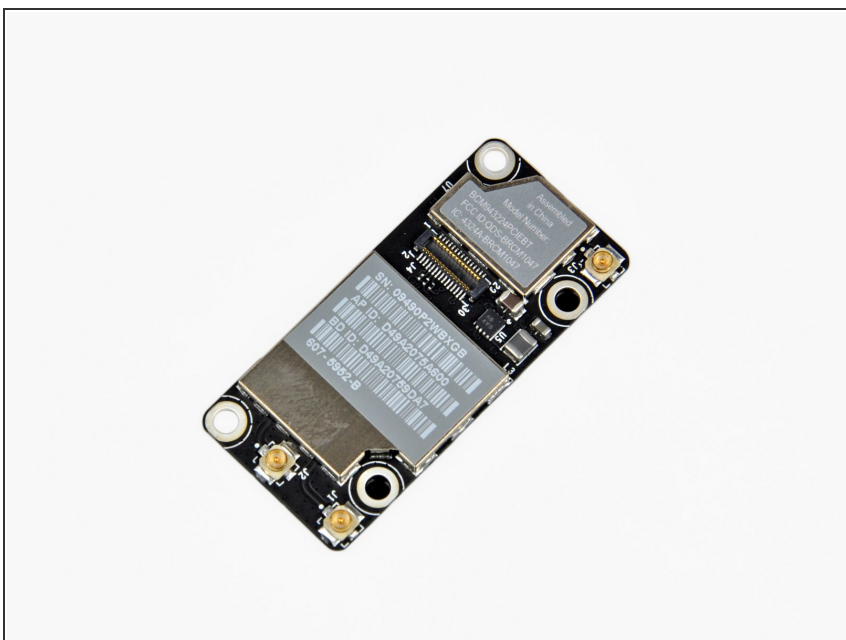
- Remove three 3 mm Phillips screws securing the AirPort/Bluetooth board to the rear speaker assembly.

## Step 15



- Lift the AirPort/Bluetooth board up off the rear speaker assembly.

## Step 16 — AirPort/Bluetooth Board



- AirPort/Bluetooth board remains.

To reassemble your device, follow these instructions in reverse order.