



# MacBook Unibody Model A1342 Display Replacement

Written By: Walter Galan



# INTRODUCTION

Use this guide to replace a broken display on your MacBook Unibody Model A1342.

[video: <http://www.youtube.com/watch?v=taBKfR40xgE>]



## TOOLS:

- [Phillips #00 Screwdriver](#) (1)
- [Spudger](#) (1)
- [T8 Torx Screwdriver](#) (1)



## PARTS:

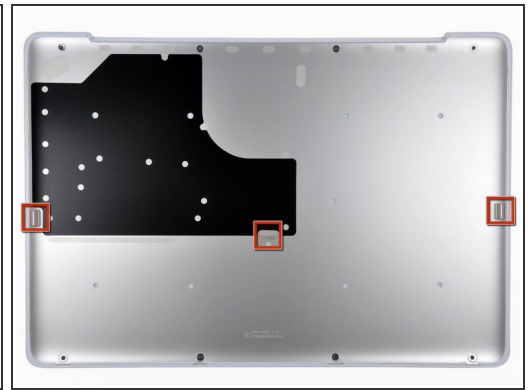
- [MacBook Unibody \(Model No. A1342\)](#)  
[Display Assembly](#) (1)


## Step 1 — Lower Case



- Remove the eight 4 mm Phillips screws securing the lower case to the MacBook.

## Step 2




 The lower case is constructed of rubber-coated aluminum. Do not excessively bend the aluminum during removal, as any permanent deformation will cause tolerance issues after reassembly.


- Slightly lift the lower case near the vent opening.
- Continue running your fingers between the lower and upper cases until the upper case pops off its retaining clips.

 The location of these three clips is shown in the third picture.

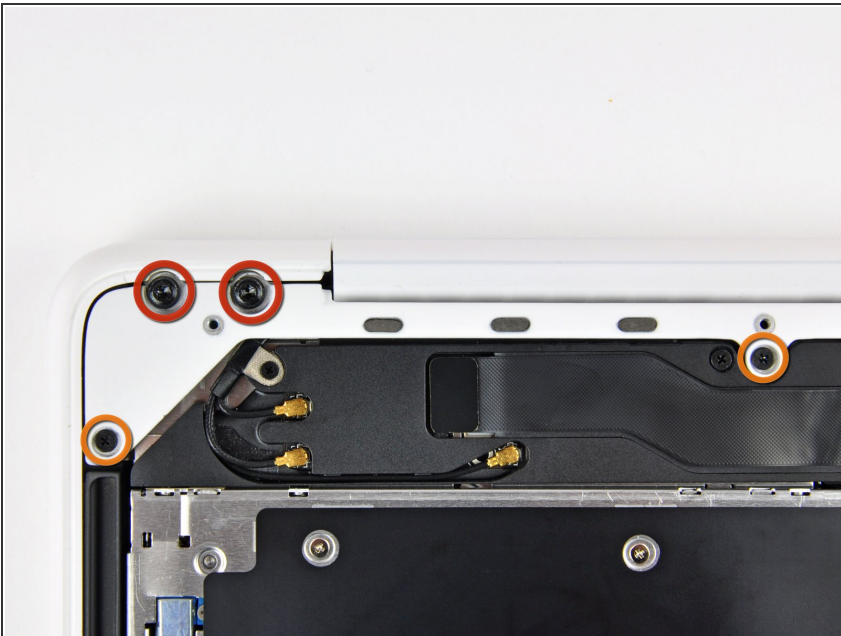
## Step 3 — Battery



 For precautionary purposes, we advise that you disconnect the battery connector from the logic board to avoid any electrical discharge. This step is **optional** and is not required.

- Use the flat end of a spudger to lift the battery connector up out of its socket on the logic board.
-  It may be easier to use your fingernails to lift up on both sides of the connector.

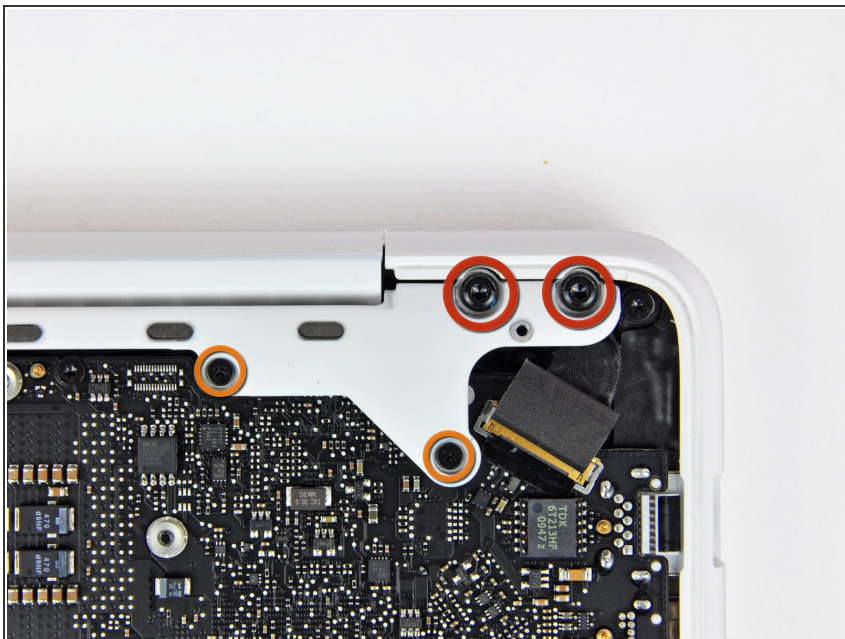
## Step 4 — Rear Vent



- Remove the following screws from the optical drive side of the rear vent:
  - Two 10 mm T8 Torx
  - Two 5.2 mm Phillips



## Step 5



- Remove the following screws from the port side of rear vent:
  - Two 10 mm T8 Torx
  - Two 5.2 mm Phillips

## Step 6



- Carefully lift the rear vent out of the upper case.

## Step 7 — Display



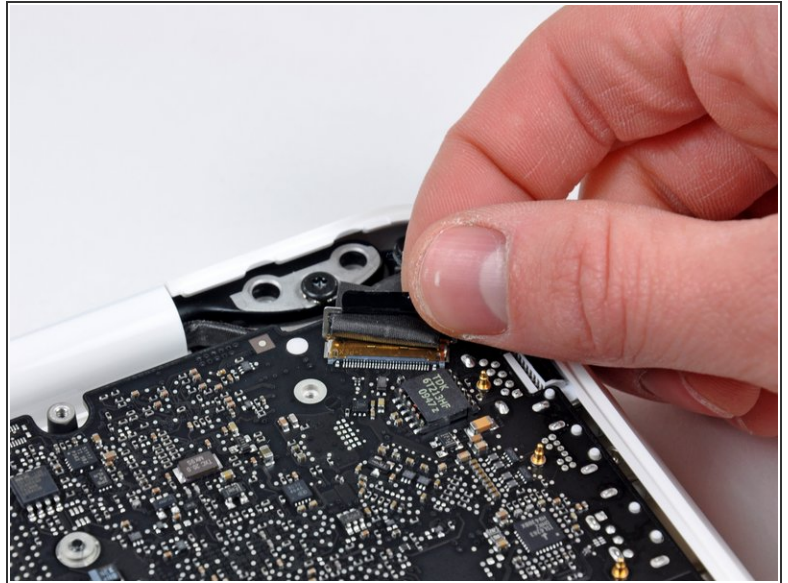
- Remove the single 3 mm Phillips screw securing the AirPort/Bluetooth antenna ground strap to the rear speaker.

## Step 8



- Use the tip of a spudger to pry the AirPort and Bluetooth antenna connectors (3 total) up off the AirPort/Bluetooth card.
- De-route the long antenna from its channel in the rear speaker housing.

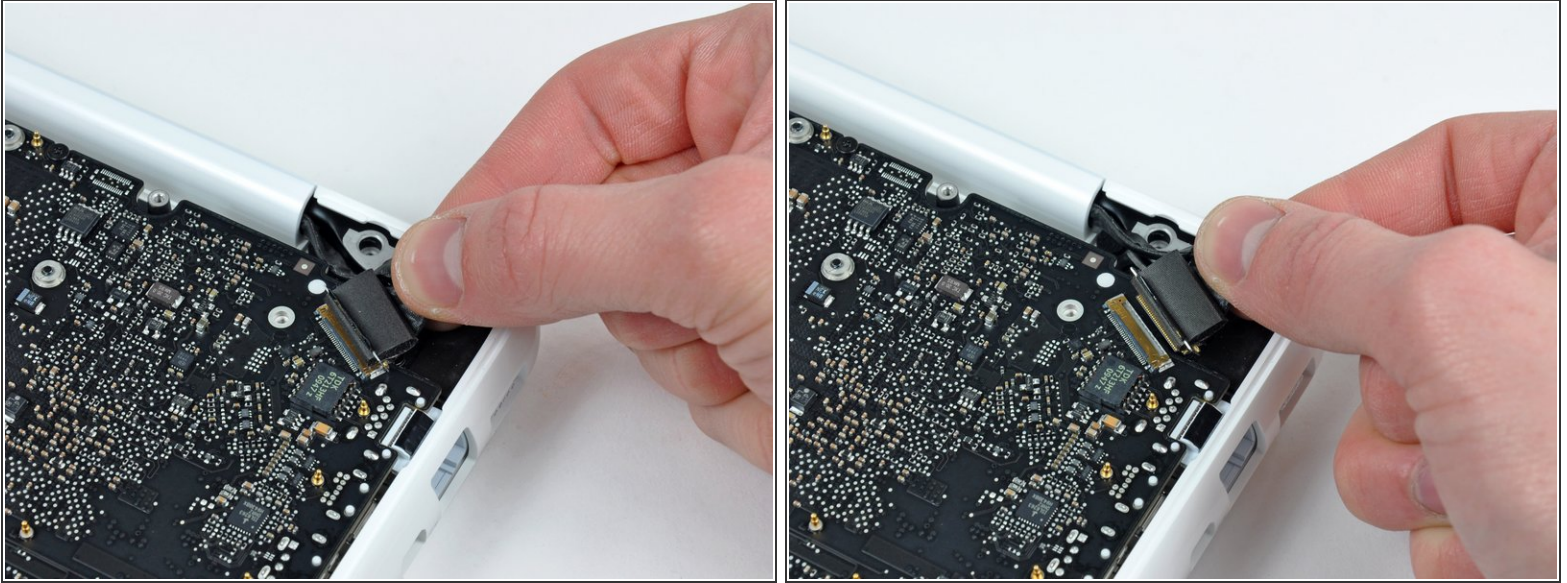
## Step 9



- Grab the plastic pull tab secured to the display data cable lock and rotate it toward the DC-In side of the computer.
- There is also a thin metal lock clip under the plastic tab that has to be released ( Use the tip of a spudger ) before you can disconnect the display data cable.



## Step 10



- Gently pull the display data cable connector away from its socket on the logic board.
- ⓘ Pull the socket parallel to the face of the logic board.
- ⚠ The display data cable socket is made of very thin metal and is easily bent. Be sure to pull the connector straight away from its socket.

## Step 11




- Open your MacBook so the display is perpendicular to the upper case.
- Place your opened MacBook on a table as pictured.
- While holding the display and upper case together with your left hand, remove the remaining 7.8 mm with lock washer T8 Torx screw from the lower display bracket.



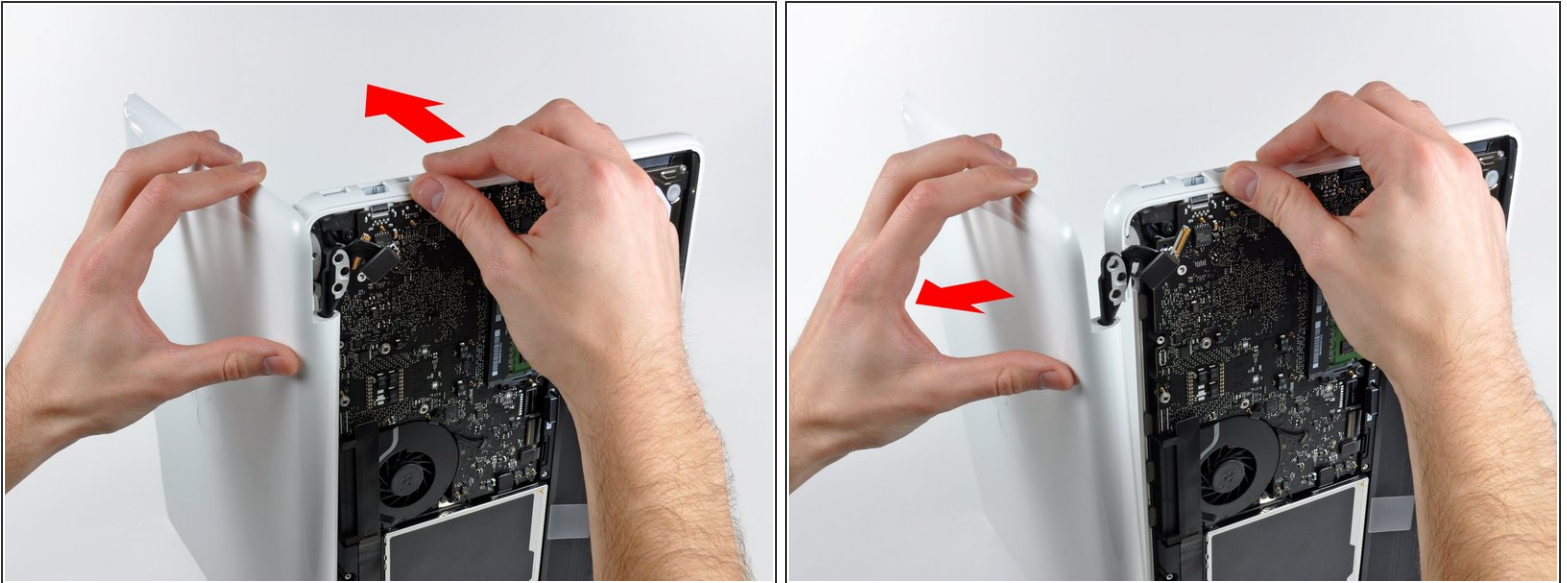
## Step 12



 Be sure to hold the display and upper case together with your left hand. Failure to do so may cause the freed display/upper case to fall, potentially damaging each component.

- Remove the last remaining T8 Torx screw securing the display to the upper case.

## Step 13



- Grab the upper case with your right hand and rotate it slightly toward the top of the display so the upper display bracket clears the edge of the upper case.
- ⓘ The display data cable may cause the upper display bracket to get caught on the upper case. It may be helpful to slightly rotate the upper case away from the display for more clearance.
- Rotate the display slightly away from the upper case.

## Step 14



- Lift the display up and away from the upper case, minding any brackets or cables that may get caught.

To reassemble your device, follow these instructions in reverse order.