



# Mad Catz Dual Force 2 Pro Rear Cover Replacement

If the controller's rear cover just could not handle your skill, here is a guide to replace it.

Written By: Alexander Coyne



## INTRODUCTION

Please remember that these controllers are not designed to be repaired so do not be surprised if you need to be rough with it or something was not initially installed correctly. Also, the same kind of screw was used throughout the controller.



### TOOLS:

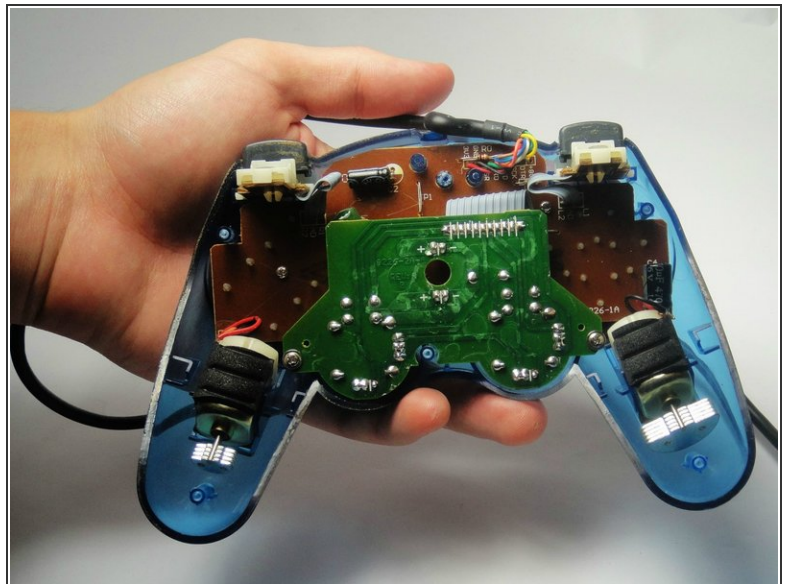
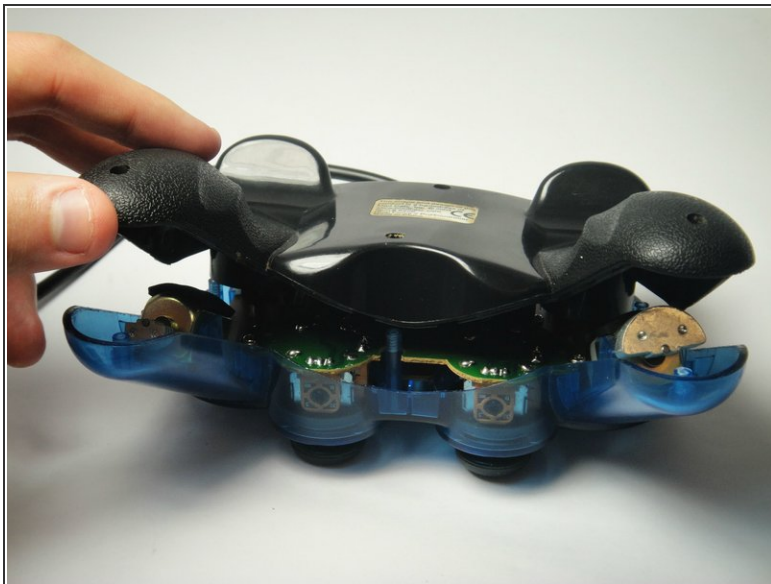
- [Phillips #1 Screwdriver](#) (1)

## Step 1 — Remove the Screws



- Remove the six 7 mm Phillips screws from the rear cover.

## Step 2



- Remove the back of the controller.

**i** There are no loose items in the controller that can fall out, so you can open it, generally, however you want.

To reassemble your device, follow these instructions in reverse order.