



# Mad Catz Street Fighter IV FightPad Front Case Replacement

Front case removal.

Written By: Eric



# INTRODUCTION

Removing the FightPad's front case for replacing the case or front artwork.



## TOOLS:

- [Tweezers](#) (1)
  - [Phillips #00 Screwdriver](#) (1)
  - [iFixit Opening Tools](#) (1)
-

## Step 1 — Rear and Side Case



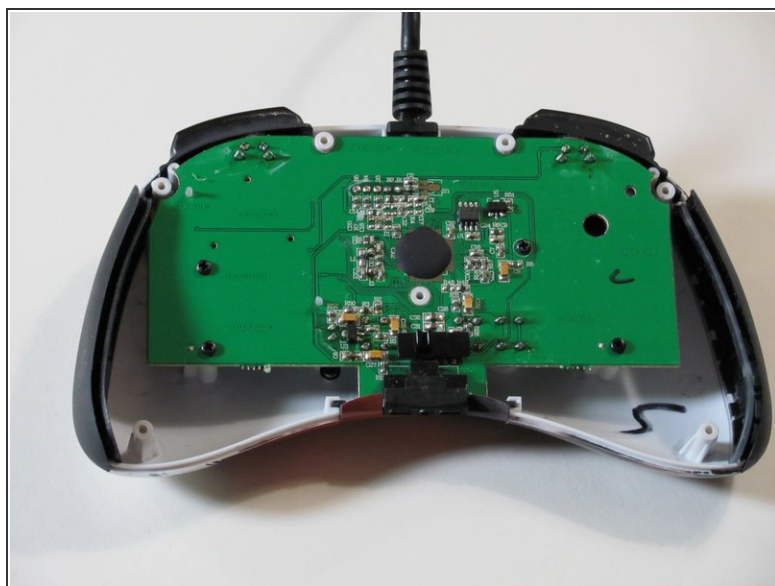
- Use tweezers to completely remove the sticker from the rear of controller.

## Step 2



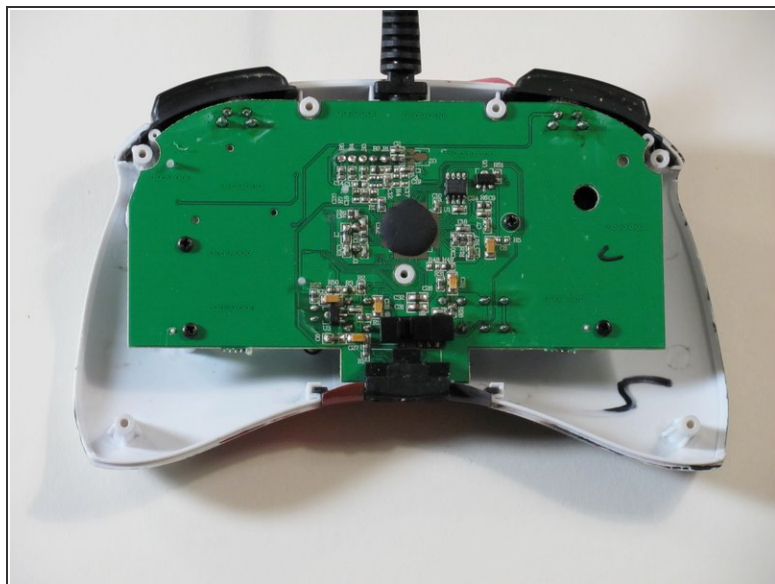
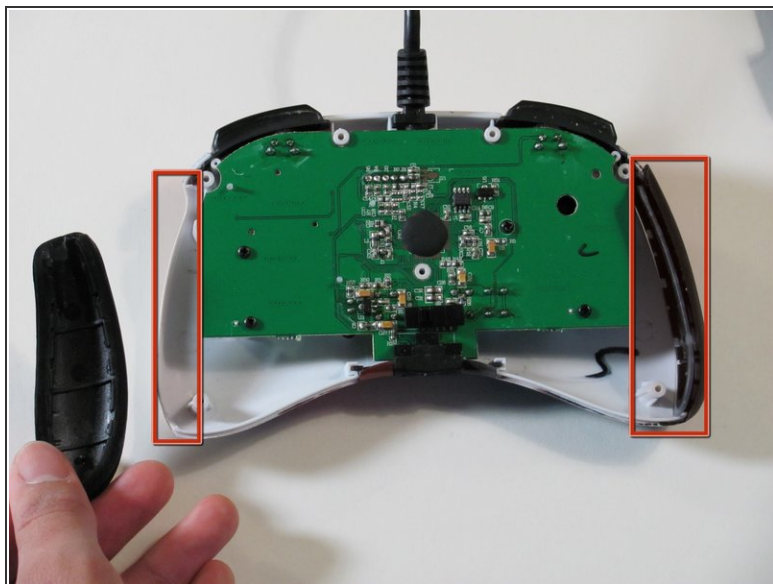
- Find the seven 8.3 mm Phillips screws on the rear of the controller and remove them.

### Step 3



- Use a plastic opening tool to separate the rear and front casing by inserting it in-between the two cases.
- Use the plastic opening tool to pry the two cases apart.

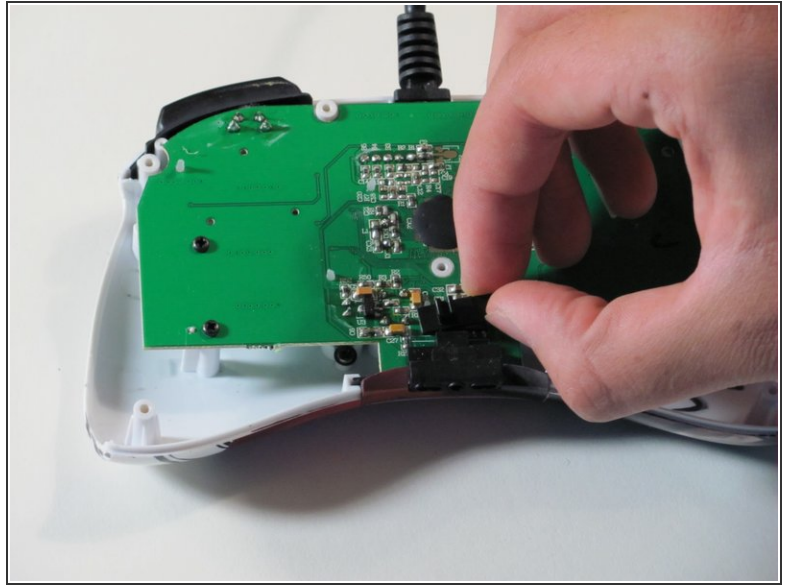
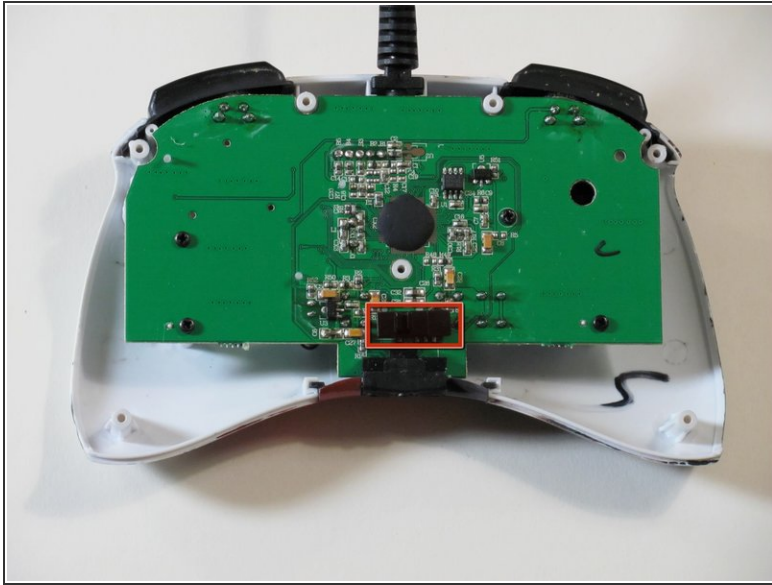
### Step 4



- Remove the two rubber side grips.

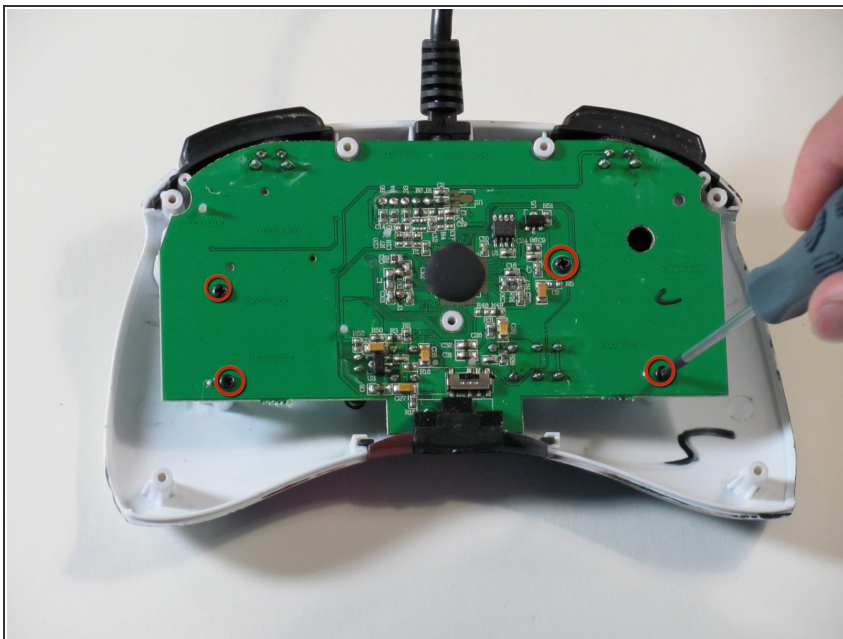


## Step 5 — RS-DP-LS Switch



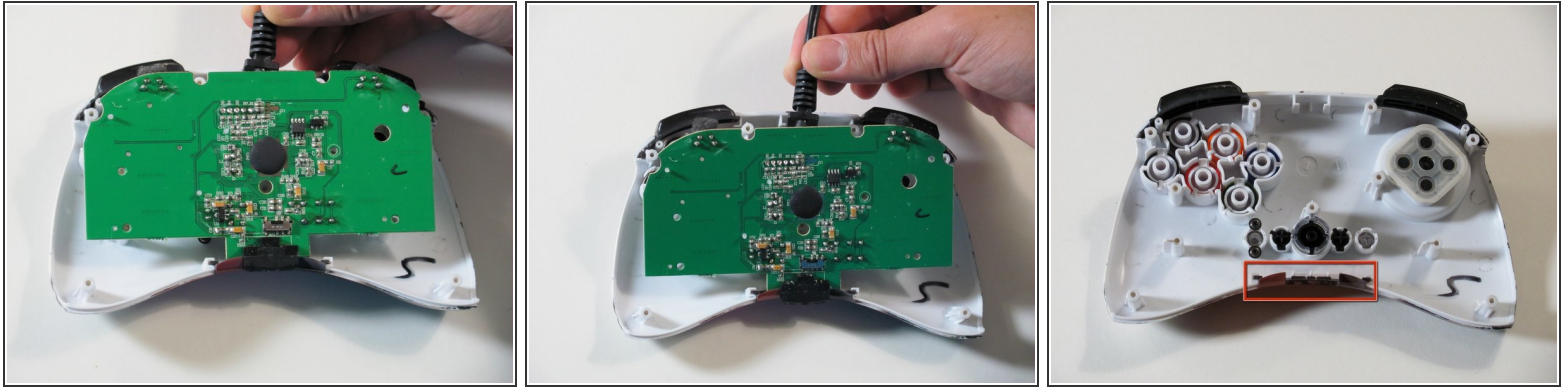
- Locate RS-DP-LS switch.
- Pull upwards on the switch to remove it.

## Step 6 — Circuit Board





- Locate the four 8.3 mm Phillips screws on the circuit board and remove them.

## Step 7

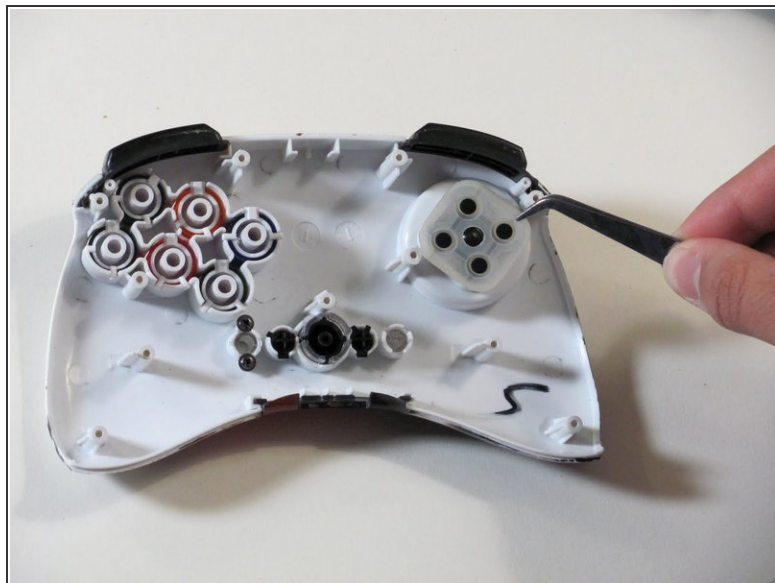
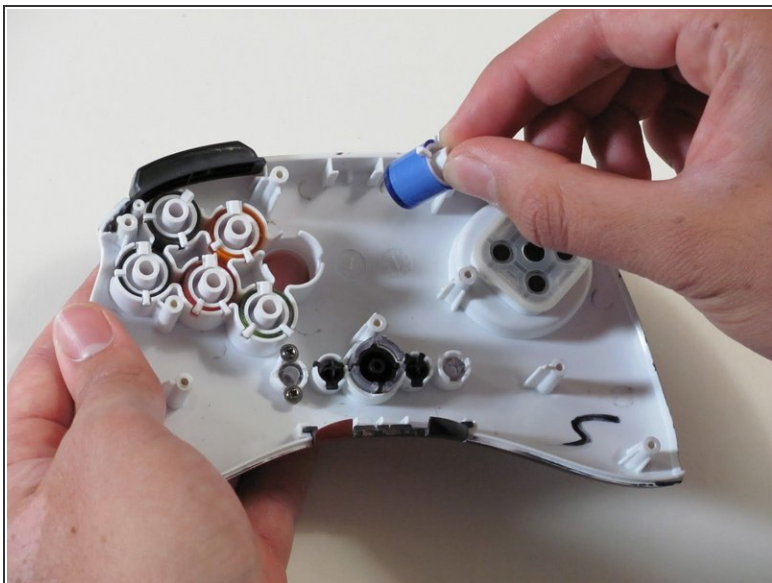


- Hold the controller cable at the area just before it meets the controller and slowly lift upwards to slide it out of its plastic slot and remove the circuit board.

 Be careful with the wires connected to the circuit board itself as they are thin and delicate.

-  When reassembling the controller, make sure that the bottom plastic piece is fully inserted into its slot before replacing the circuit board.

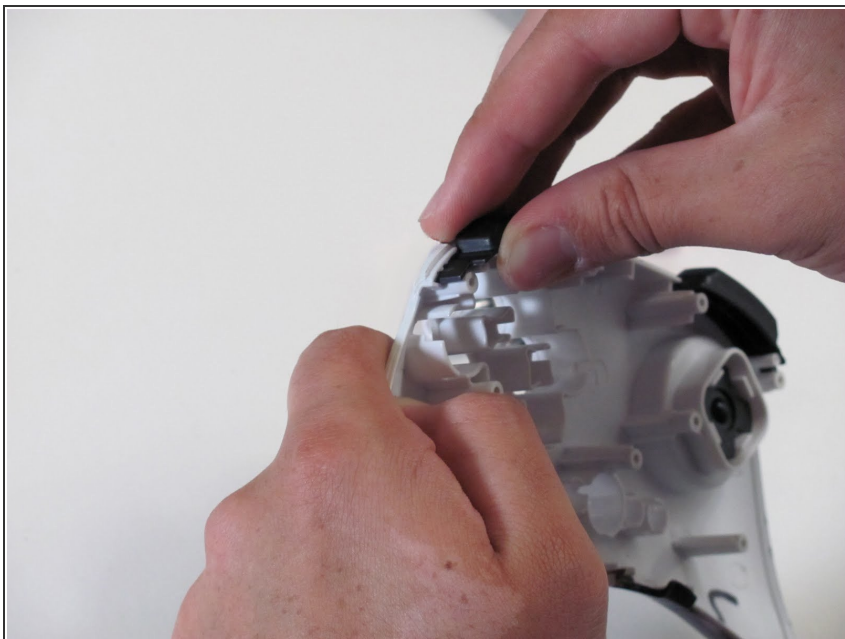
## Step 8 — Buttons



- Remove the six buttons one by one by gripping the back of each one and pushing on them from the front.
  - Use tweezers to remove the rubber part of the directional pad before you try to remove the shoulder buttons.
- ☒ When reinserting the buttons make sure they are in the correct place and oriented correctly.



## Step 9



- Remove the left and right shoulder buttons by sliding them out of their respective slots.

## Step 10 — Front Case



- Pull the plastic piece out from the bottom of the controller.

To reassemble your device, follow these instructions in reverse order.