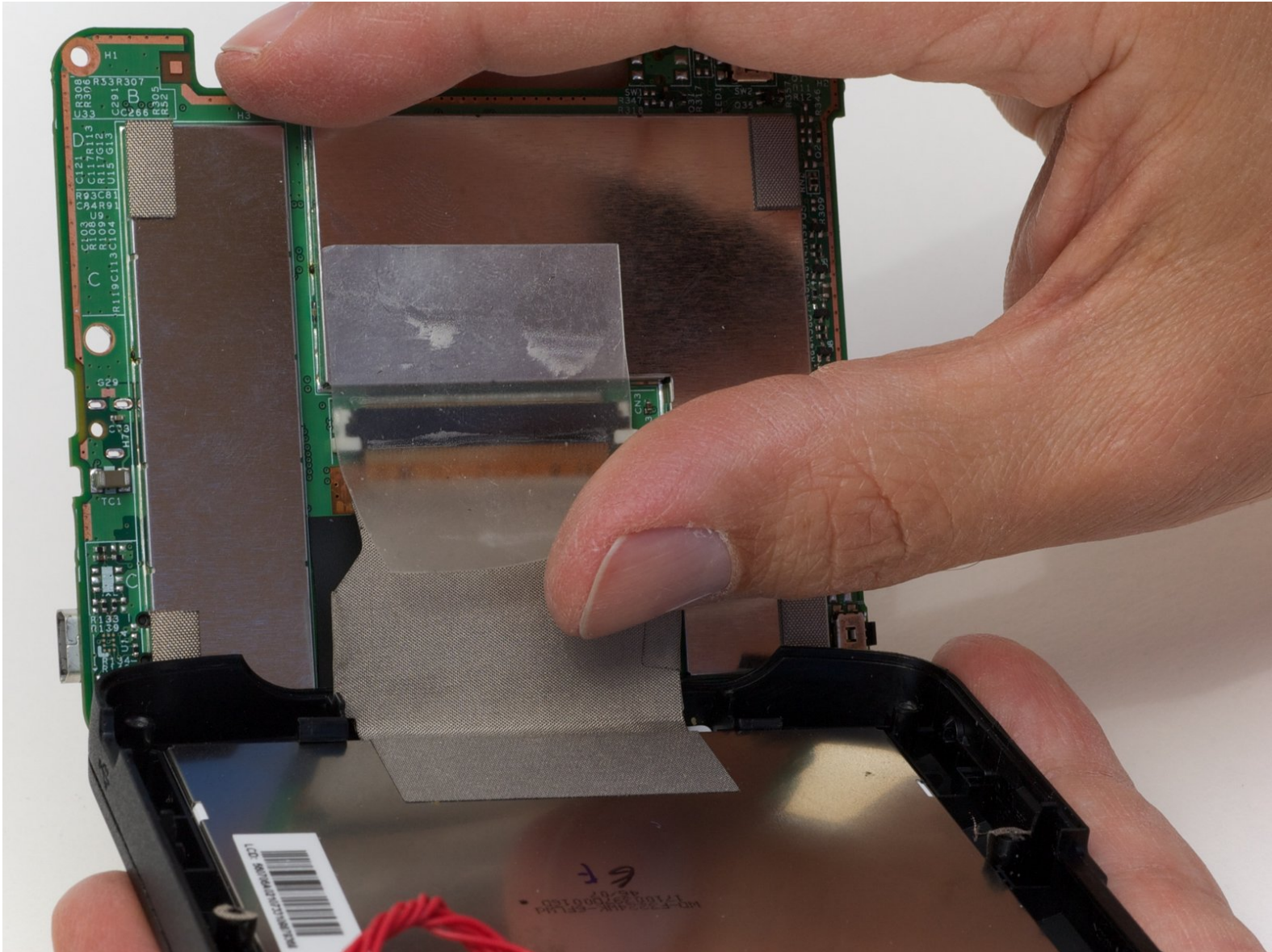




Magellan RoadMate 1200 Display Replacement

Written By: Ross Light



INTRODUCTION

A guide to accessing the RoadMate's display.



TOOLS:

- [Phillips #00 Screwdriver](#) (1)
-

Step 1 — Back Cover



- Remove the four rubber caps from the back by using the Phillips #00 screwdriver.

Step 2




- Remove the four screws holding the cover in place by using the Phillips #00 screwdriver.

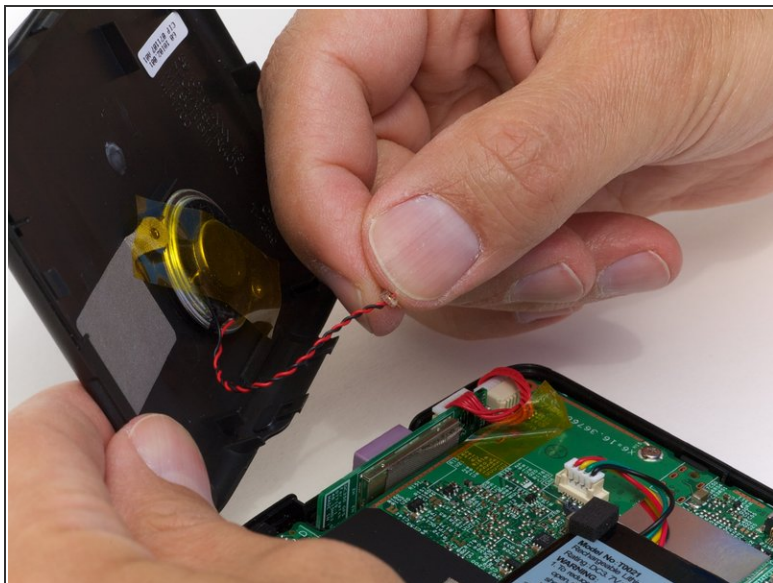
Step 3



- Remove the back cover from the device by separating the back cover along its seam.

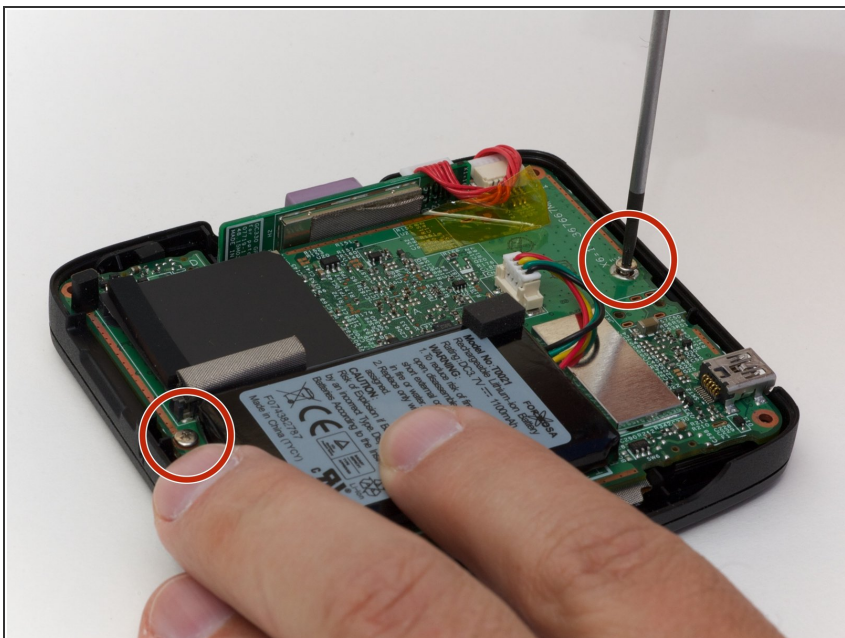
 Slowly lift the cover—the speaker is screwed onto the back cover and is connected to the circuit board.

Step 4



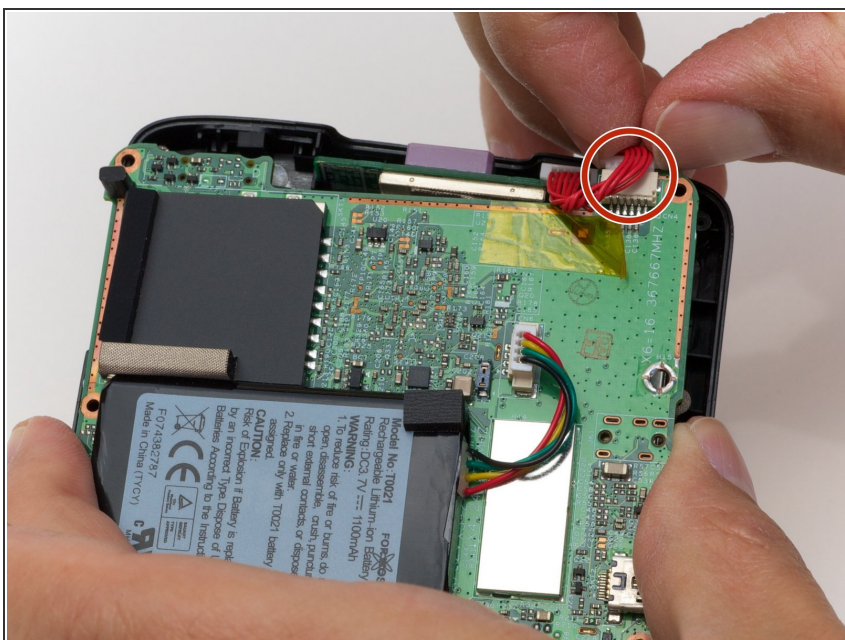
- Pull the speaker cord, horizontally, by its base, away from the motherboard.
- ☑ When reassembling, make sure that you plug the terminal in the same way. The black wire should be on the side farthest from the battery.

Step 5 — Motherboard



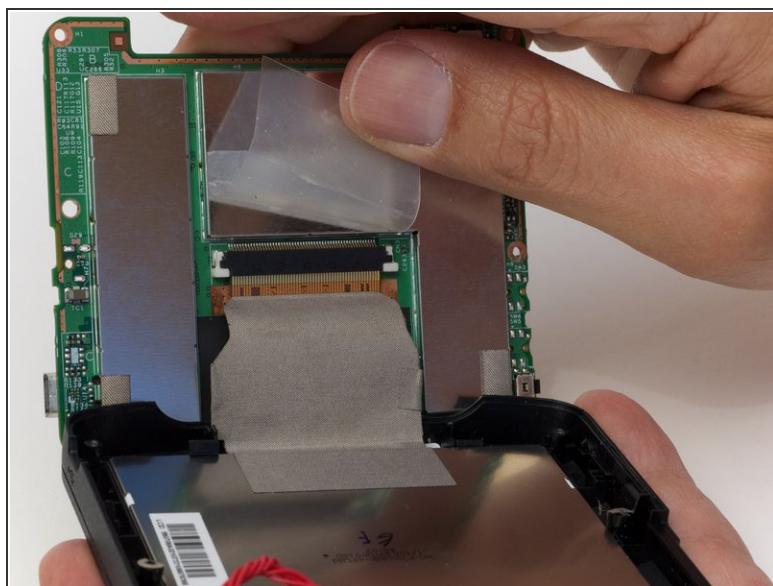
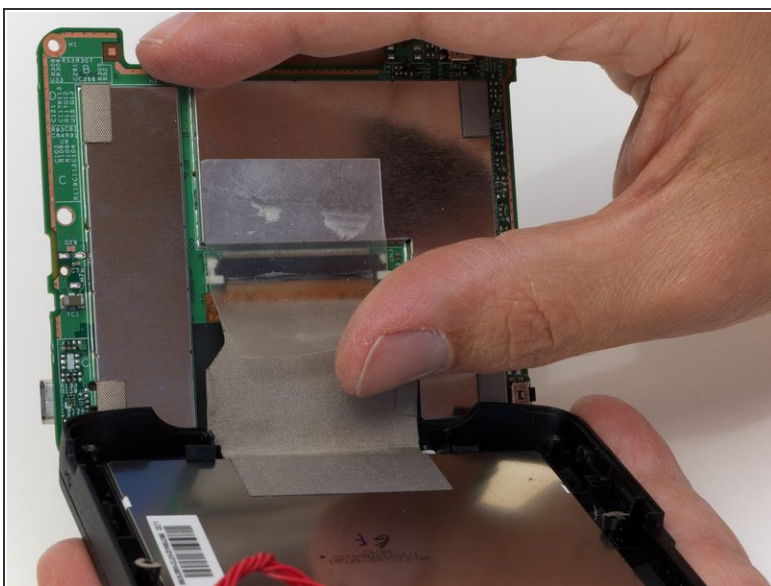
- Remove the two screws on that are located on opposite sides of the board.

Step 6



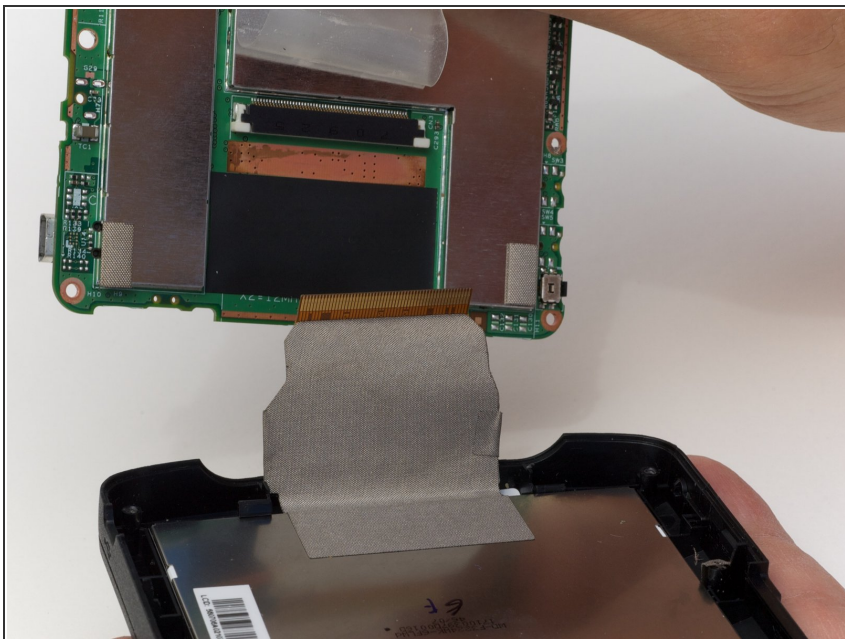
- Lift up the circuit board and disconnect the GPS wire, pulling horizontally from its connector port.

Step 7 — Logic Board



- Peel back the tape securing the display connector to the logic board.

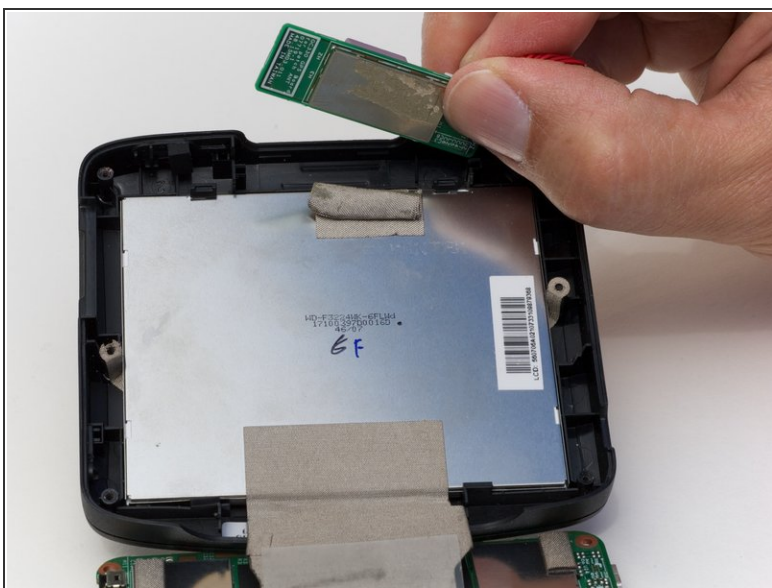
Step 8



- Remove the display connector from the device.

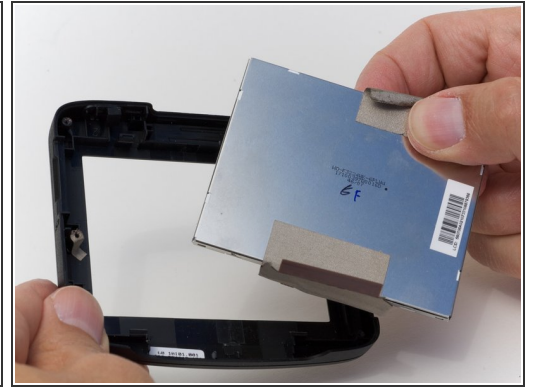
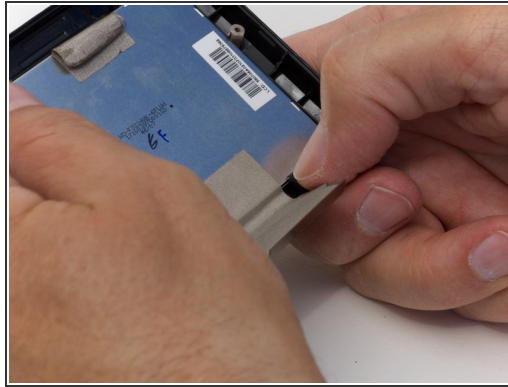
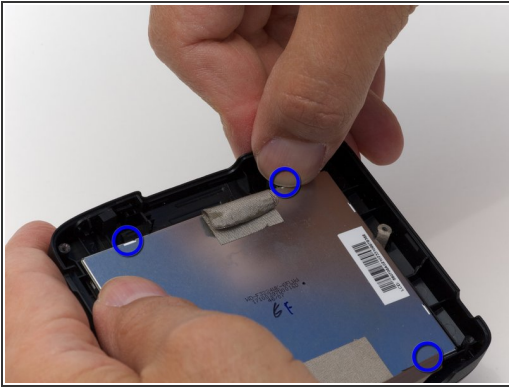
⚠ Do not pull on the cable because you may damage it. Instead, try to pull as closely as you can to the plug.

Step 9 — GPS Sensor



- Carefully flip the circuit board out so you can get to the sensor easily.
- Remove the tape holding the sensor to the display and take out the sensor.

Step 10 — Display



- Undo the 4 clasps holding the display in place.
- Pop the display from the front cover.

To reassemble your device, follow these instructions in reverse order.