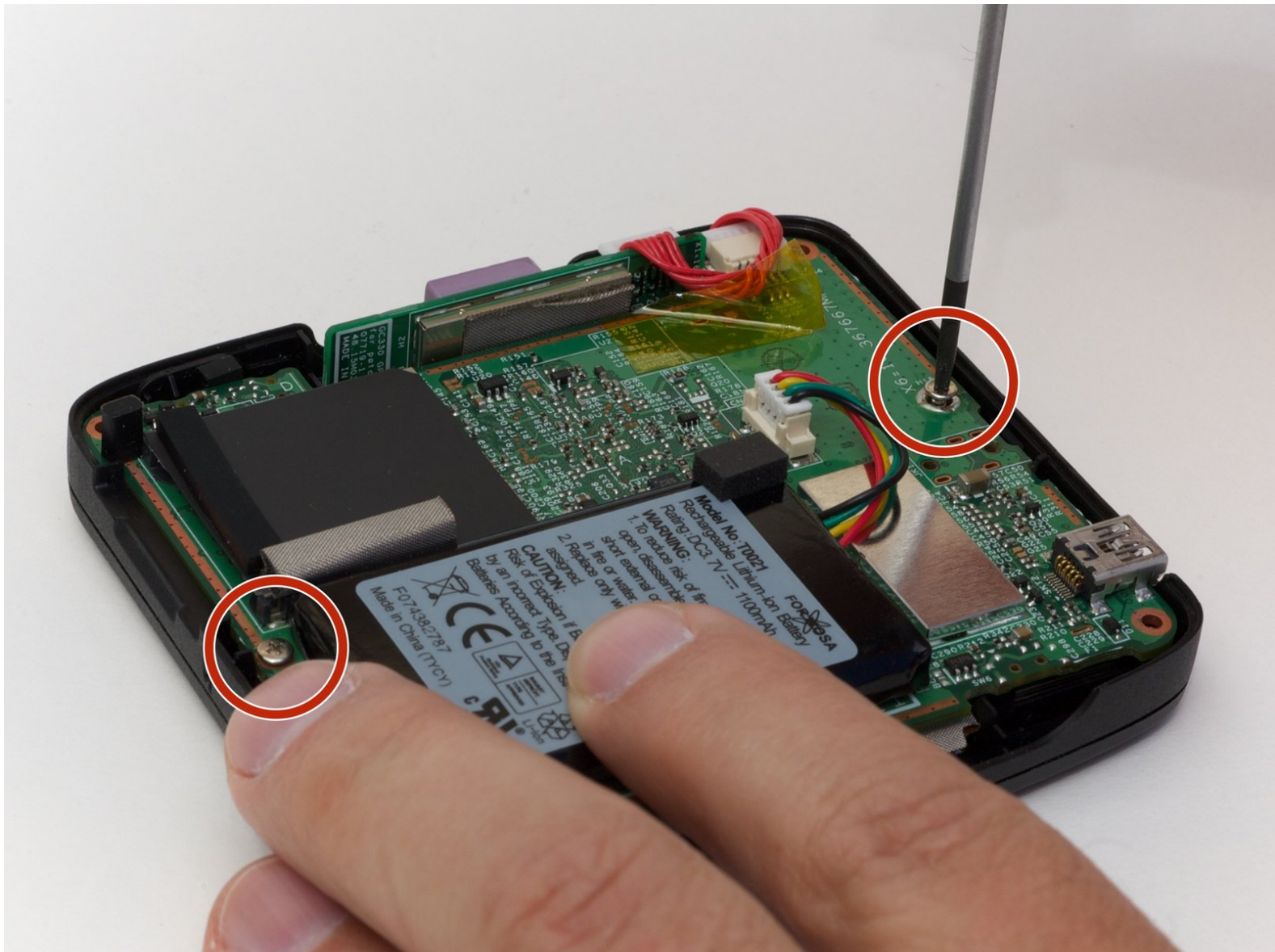




Magellan RoadMate 1200 Motherboard Replacement

How to replace a Magellan RoadMate 1200 motherboard.

Written By: Ross Light



INTRODUCTION

This guide will outline how to replace a Magellan RoadMate 1200 motherboard. This piece is an integral part to the system, and may malfunction or break after a long period of use.

TOOLS:

- [Phillips #00 Screwdriver](#) (1)
-

Step 1 — Back Cover



- Remove the four rubber caps from the back by using the Phillips #00 screwdriver.

Step 2



- Remove the four screws holding the cover in place by using the Phillips #00 screwdriver.

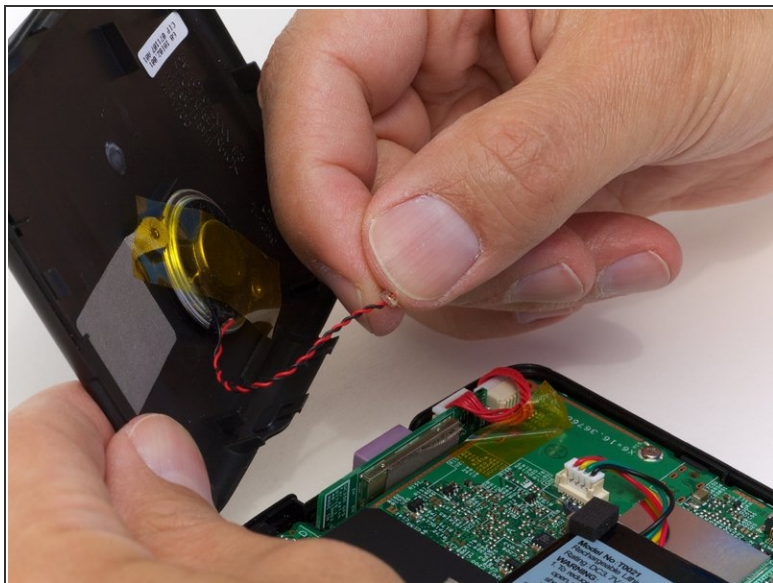
Step 3



- Remove the back cover from the device by separating the back cover along its seam.

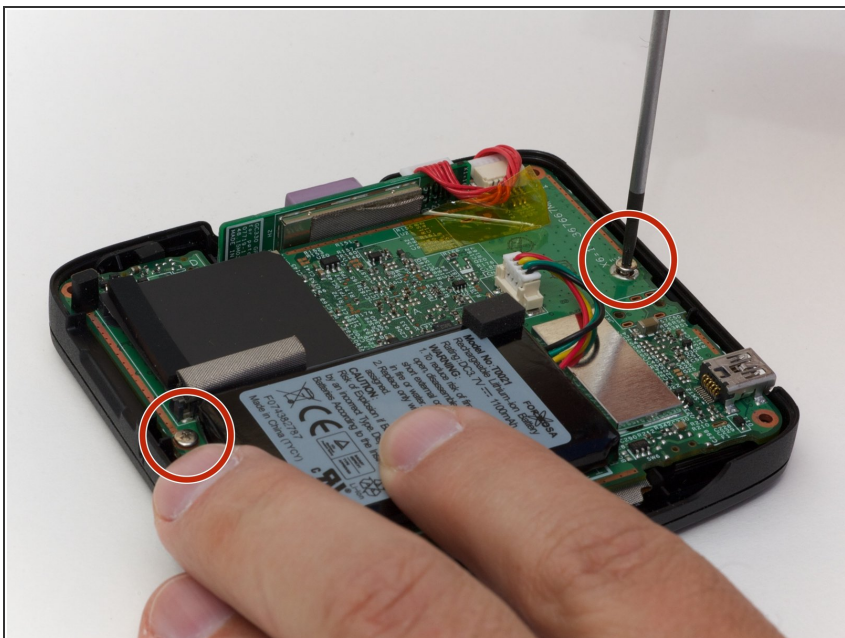
⚠ Slowly lift the cover—the speaker is screwed onto the back cover and is connected to the circuit board.

Step 4



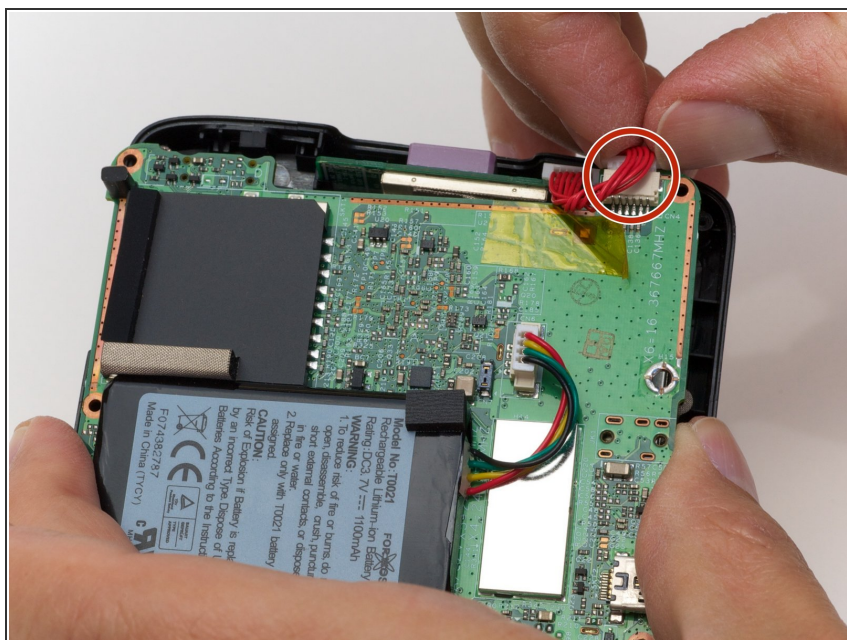
- Pull the speaker cord, horizontally, by its base, away from the motherboard.
- ☑ When reassembling, make sure that you plug the terminal in the same way. The black wire should be on the side farthest from the battery.

Step 5 — Motherboard



- Remove the two screws on that are located on opposite sides of the board.

Step 6



- Lift up the circuit board and disconnect the GPS wire, pulling horizontally from its connector port.

To reassemble your device, follow these instructions in reverse order.