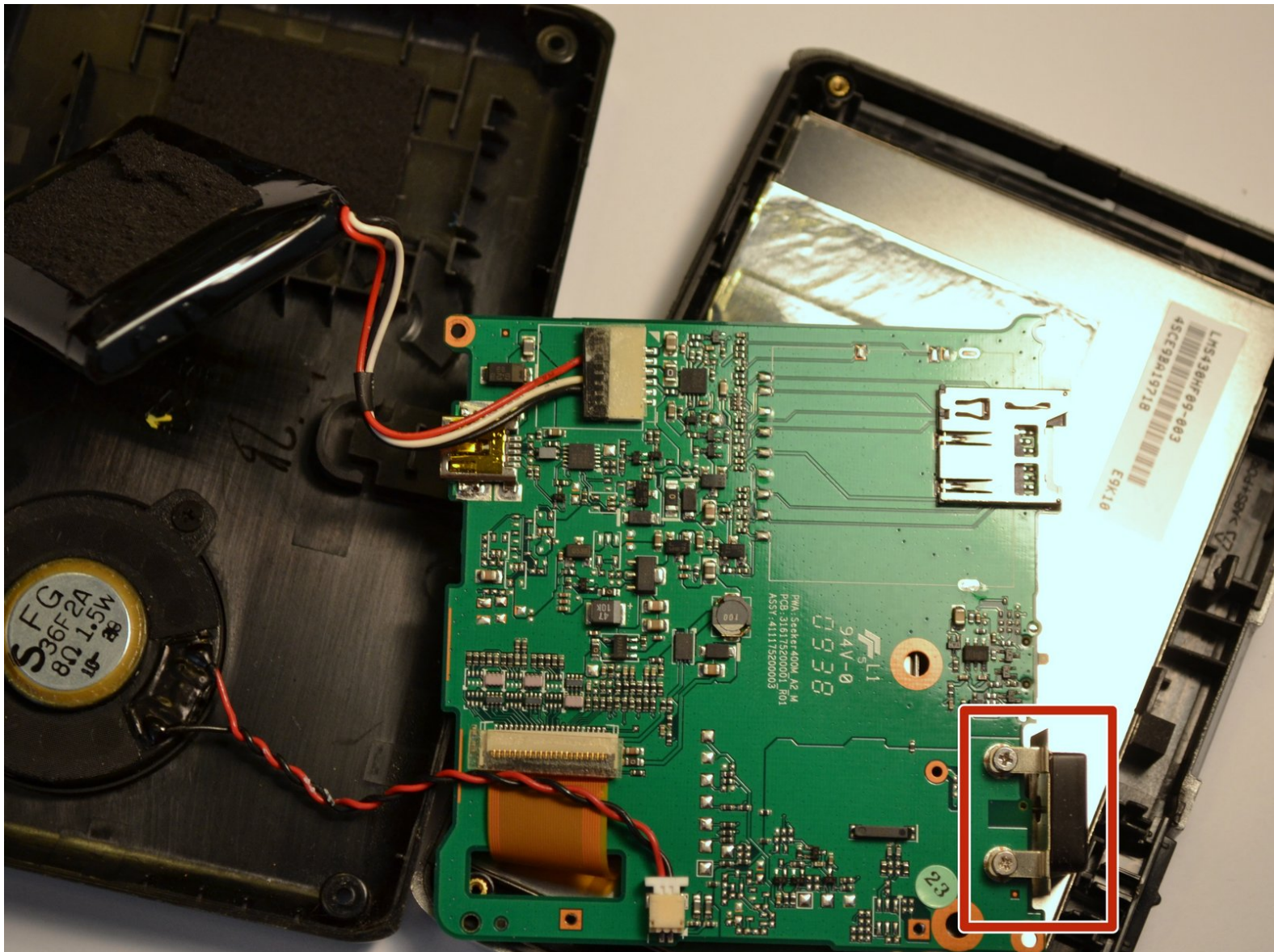




Magellan RoadMate 1440 Antenna Replacement

This guide will illustrate how to replace the device's antenna.

Written By: Benton Burns



INTRODUCTION

This guide will illustrate how to replace the device's antenna.



TOOLS:

- [Heavy-Duty Spudger](#) (1)
 - [Phillips #0 Screwdriver](#) (1)
 - [Portable Soldering Iron](#) (1)
-

Step 1 — Magellan RoadMate 1440 Back Cover Disassembly



- Place the GPS with the screen facing down.

Step 2



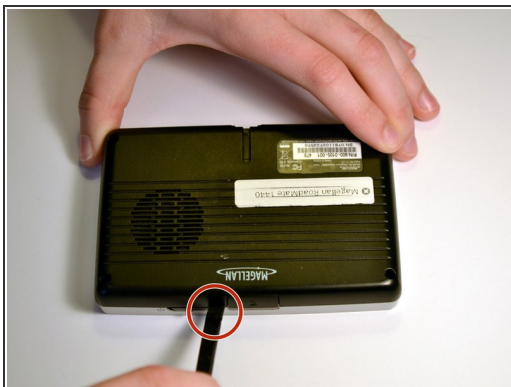
- Remove the four 4.2 mm screws on the back cover of the device using a Phillips #0 screwdriver.

Step 3



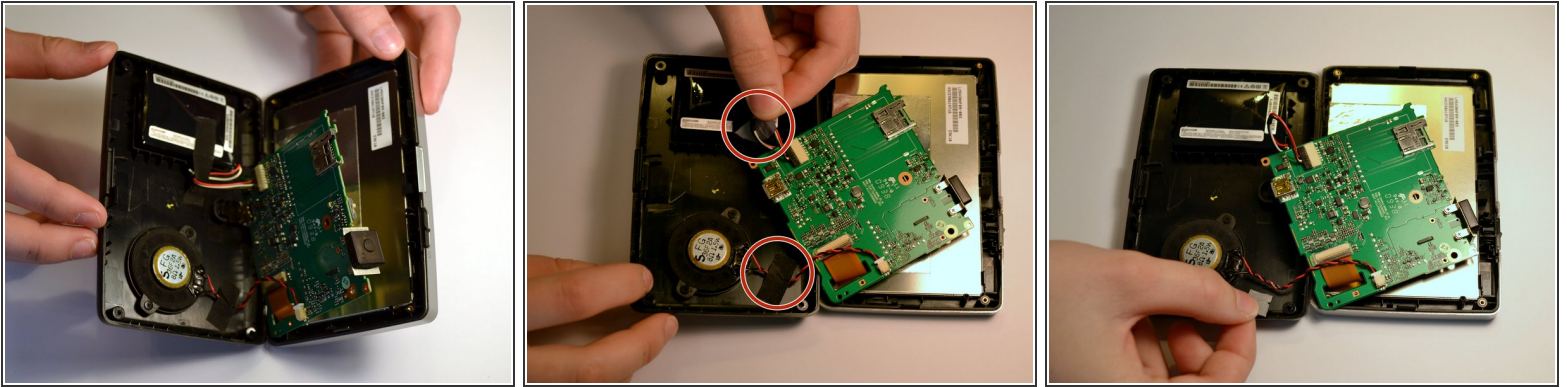
- Remove the two 4.2mm screws at the bottom of the device using a Phillips #0 screwdriver.

Step 4



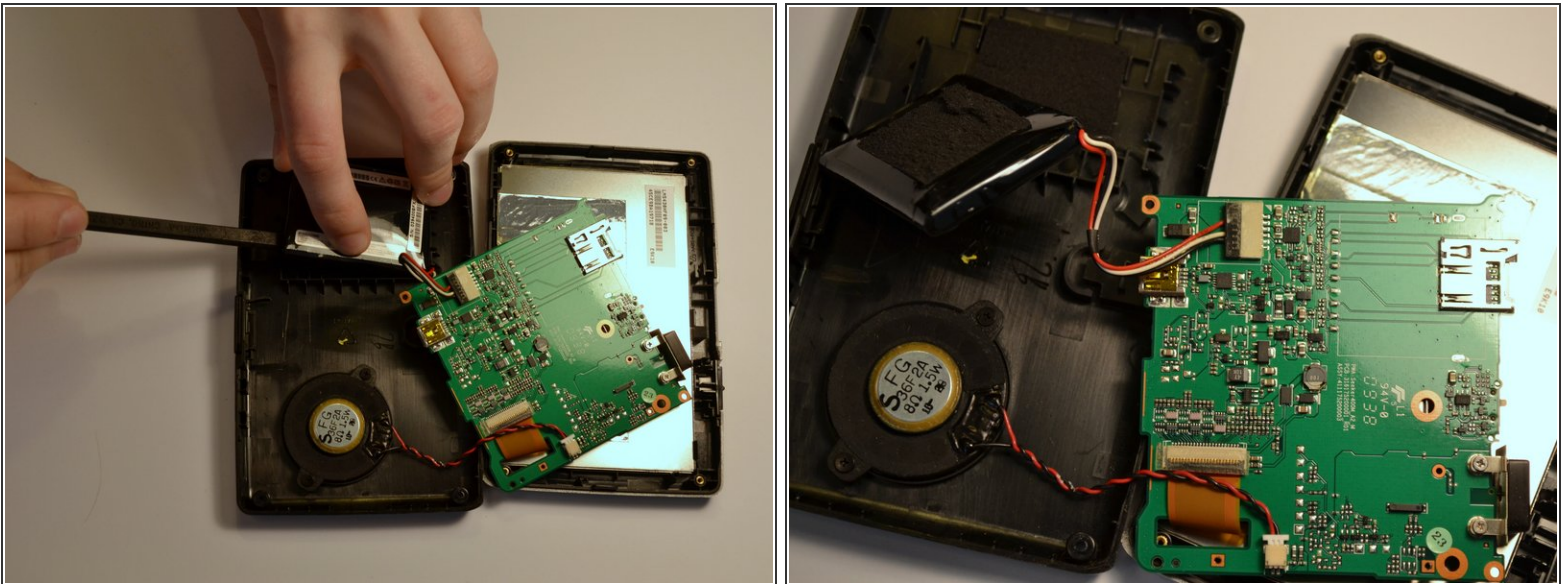
- Insert the black spudger into the crease in the side of the GPS.
- Move the end of the spudger down to break the seal between the two plastic shells.
- Continue doing this along each side of the GPS to ensure a smooth removal.

Step 5



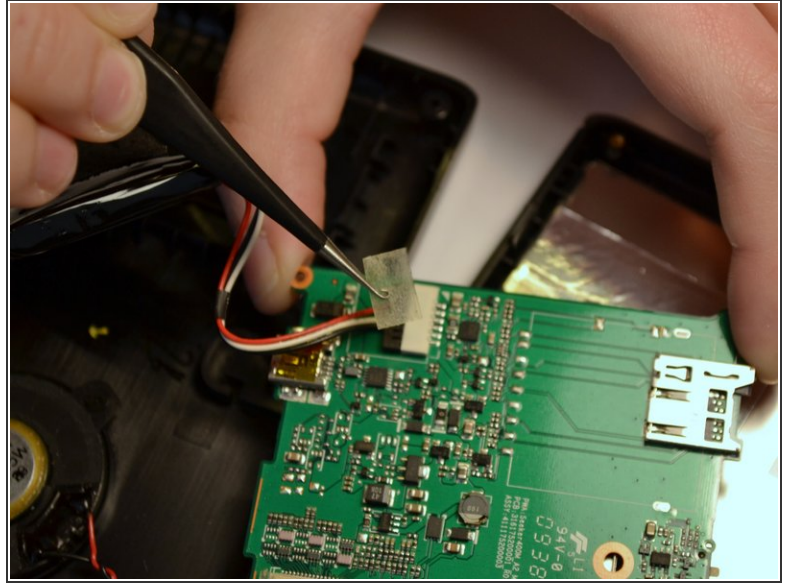
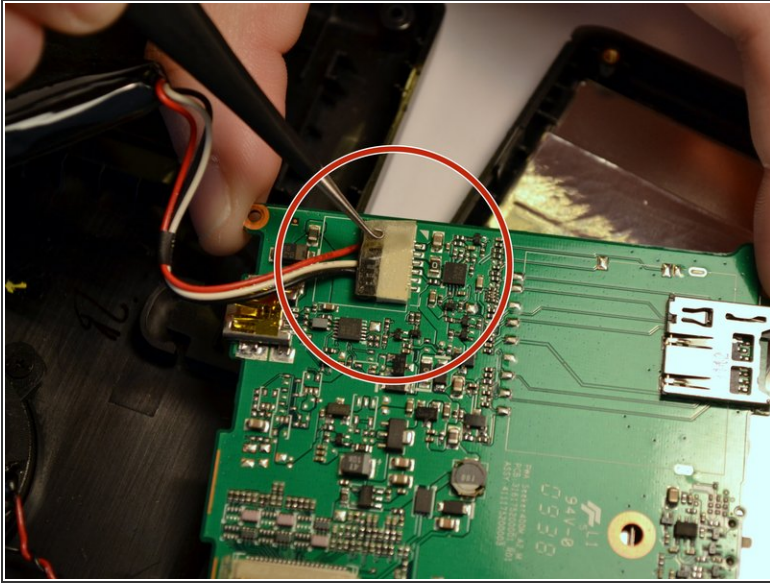
- Fully separate the two sides of the case.
- Remove the tape on the battery wires and the tape on the speaker wires.

Step 6 — Battery



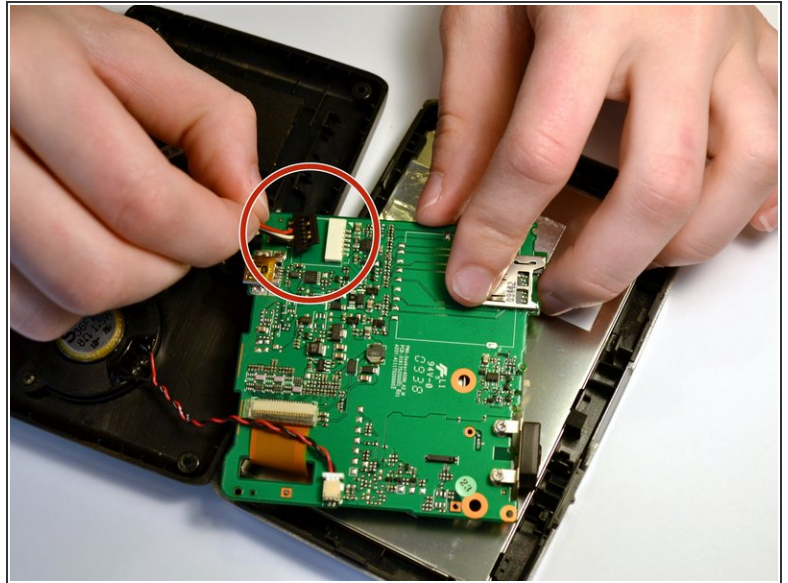
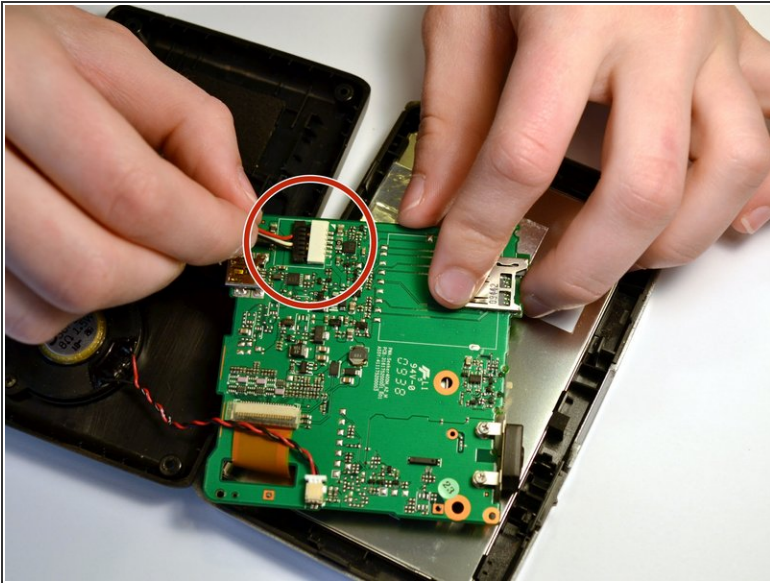
- Use the black spudger to break the seal between the adhesive and battery. Use the same spudger to continue to pry the battery from the backing
- ⓘ This may be a little tough to separate the battery and the adhesive

Step 7



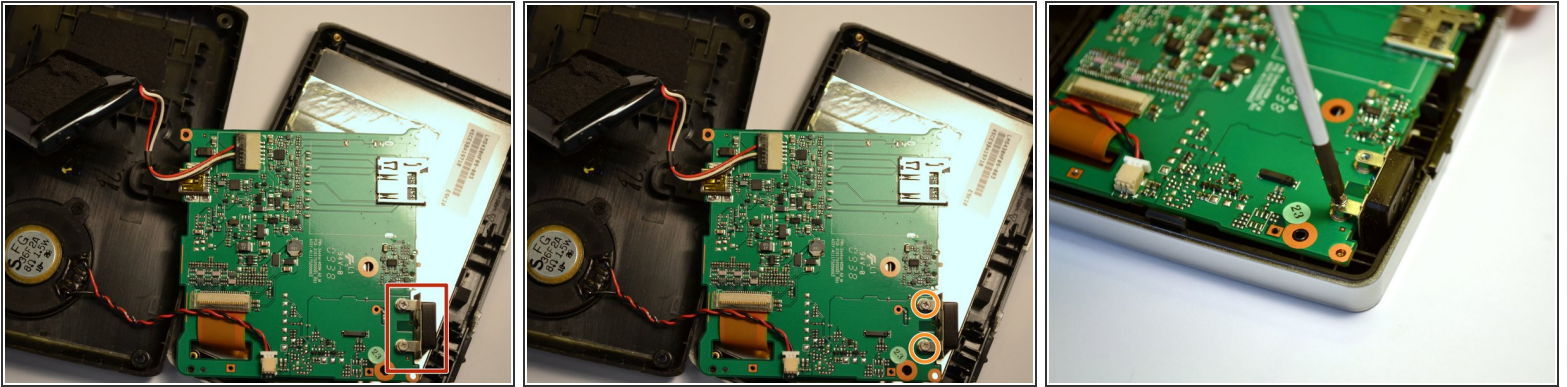
- Lift the battery from the device
- Once the battery is free from the adhesive, remove the piece of tape with a pair of tweezers that is covering the connection of the battery to the motherboard.

Step 8



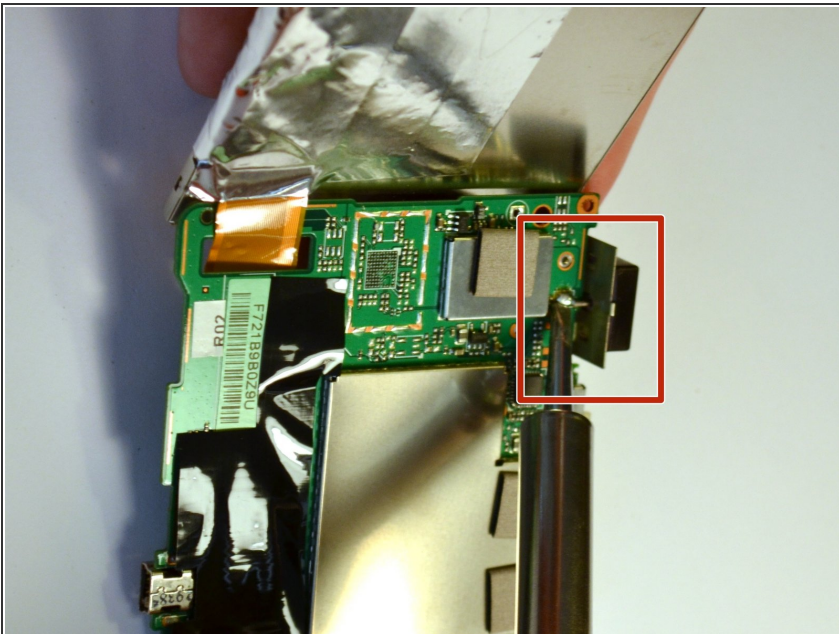
- Unplug the battery from the mother board by pulling back the clips and pulling the wires away from the motherboards receptacle
- ⚠ It is important for your and the device's safety to remove the battery before continuing with any other part removals.
- ℹ It is not necessary to separate the red and white wires from the battery. A replacement battery pack will come with similar wires already attached.

Step 9 — Antenna



- Identify the antenna.
- Locate the two screws in the antenna.
- Use a Phillips #0 screwdriver to remove the two 2.5mm Phillips #0 screws.

Step 10



- After the screws have been removed, move the motherboard so that it is sitting in the side with the speaker and battery.
- Using a soldering iron, melt the solder connecting the antenna to the motherboard. For instructions on how to use the soldering iron, refer to [Soldering Technique Guide](#) for instructions.

⚠ The soldering iron will be hot. Handle it with caution.

To reassemble your device, follow these instructions in reverse order.