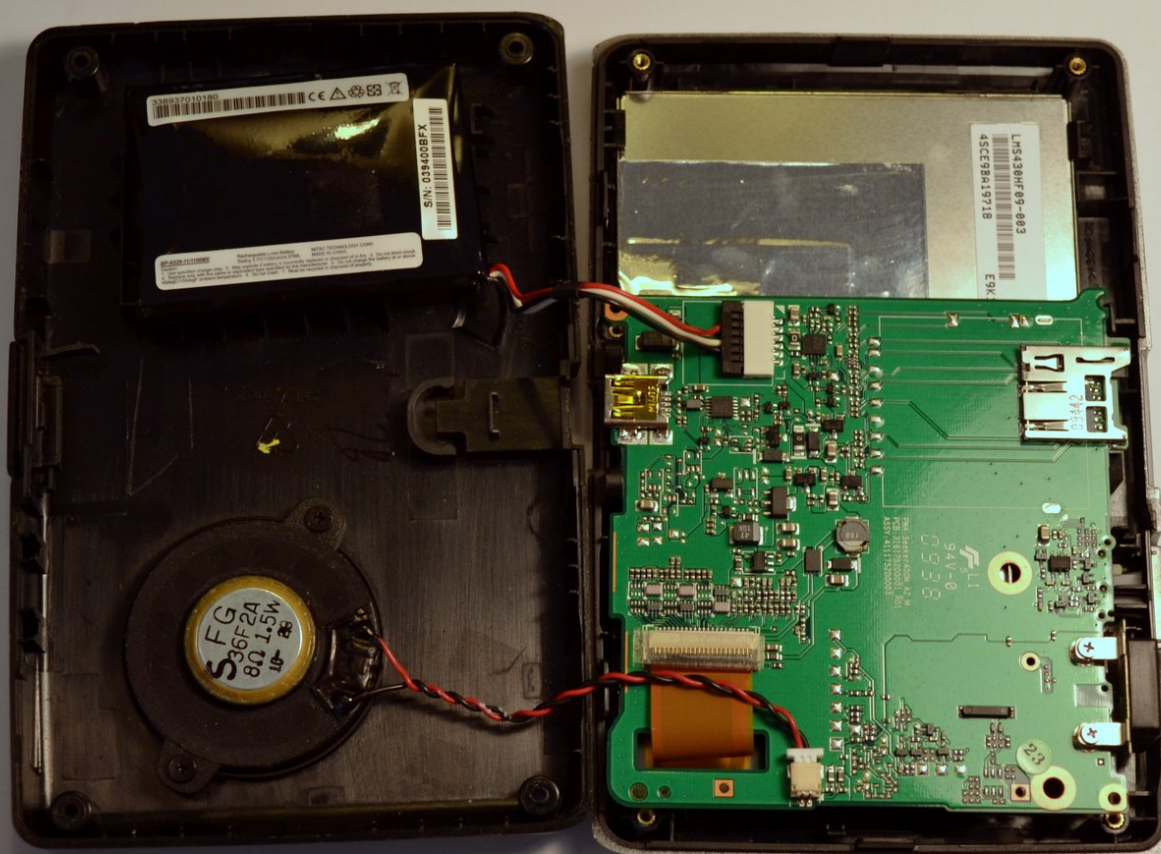




# Magellan RoadMate 1440 Speaker Replacement

This guide will break down the steps on how to remove the speaker from the device.

Written By: Lauren Cain



---

## INTRODUCTION

This guide will break down the steps on how to remove the speaker from the device.



### TOOLS:

- [Heavy-Duty Spudger](#) (1)
  - [Phillips #0 Screwdriver](#) (1)
-

## Step 1 — Magellan RoadMate 1440 Back Cover Disassembly



- Place the GPS with the screen facing down.

## Step 2



- Remove the four 4.2 mm screws on the back cover of the device using a Phillips #0 screwdriver.



## Step 3



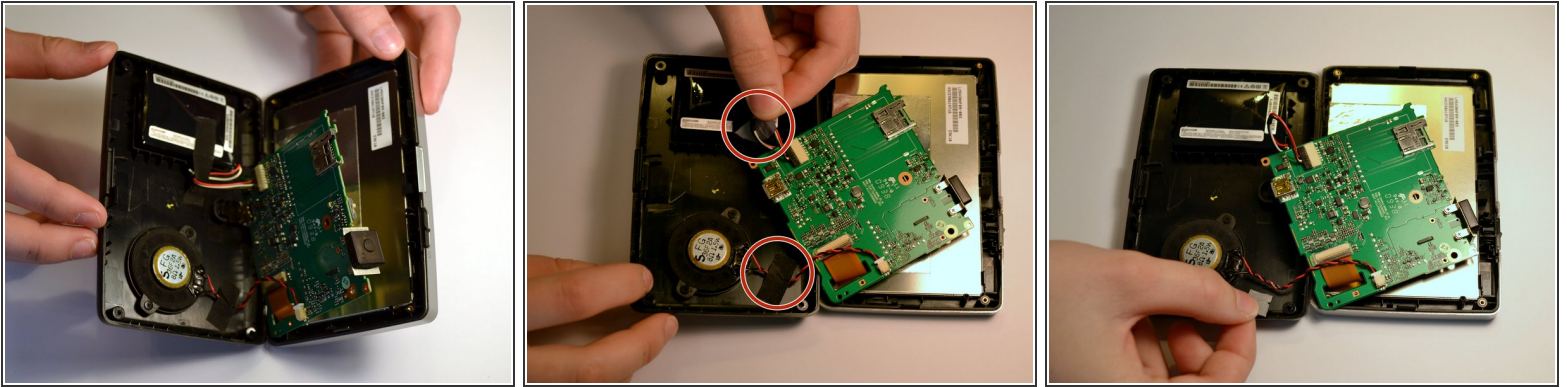
- Remove the two 4.2mm screws at the bottom of the device using a Phillips #0 screwdriver.

## Step 4



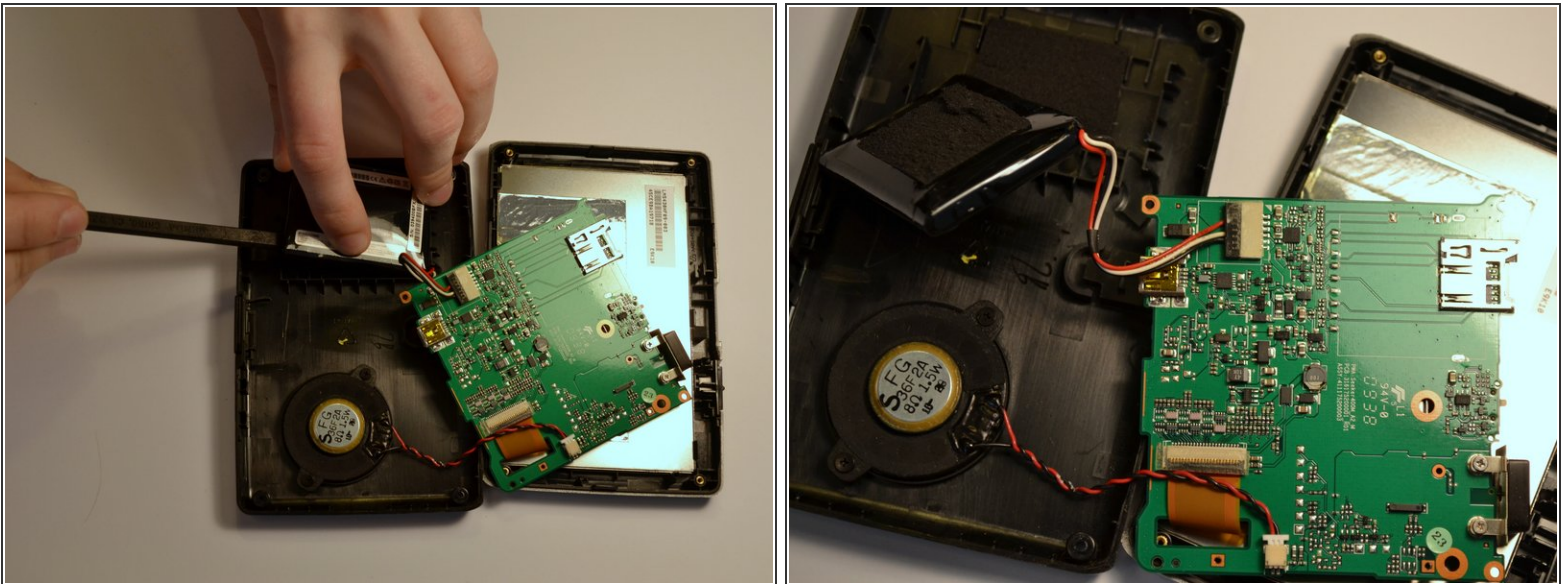
- Insert the black spudger into the crease in the side of the GPS.
- Move the end of the spudger down to break the seal between the two plastic shells.
- Continue doing this along each side of the GPS to ensure a smooth removal.

## Step 5



- Fully separate the two sides of the case.
- Remove the tape on the battery wires and the tape on the speaker wires.

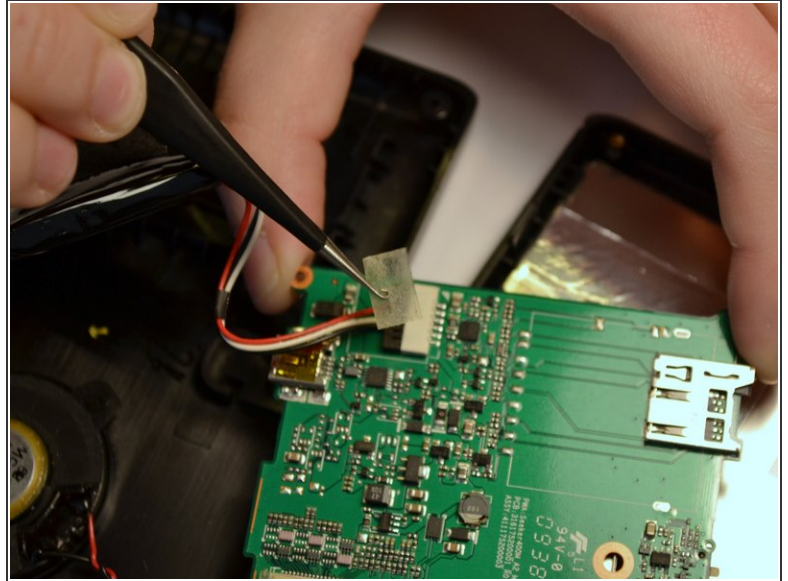
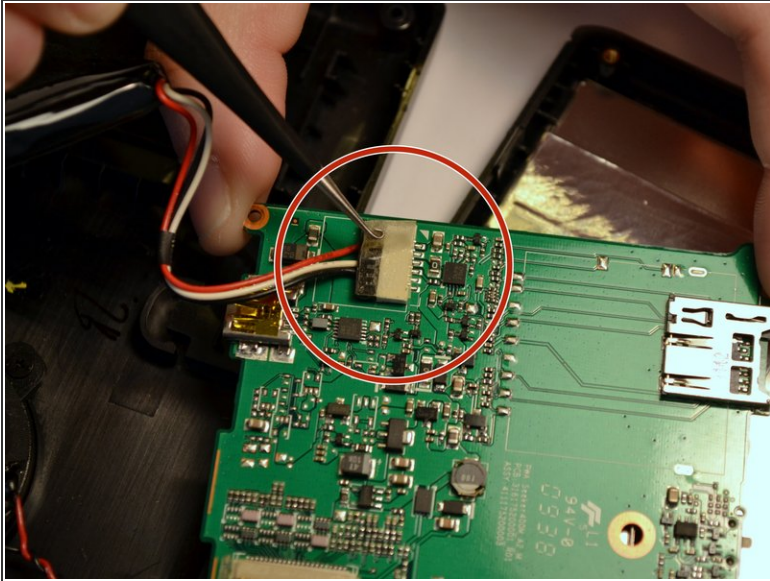
## Step 6 — Battery



- Use the black spudger to break the seal between the adhesive and battery. Use the same spudger to continue to pry the battery from the backing
- ⓘ This may be a little tough to separate the battery and the adhesive

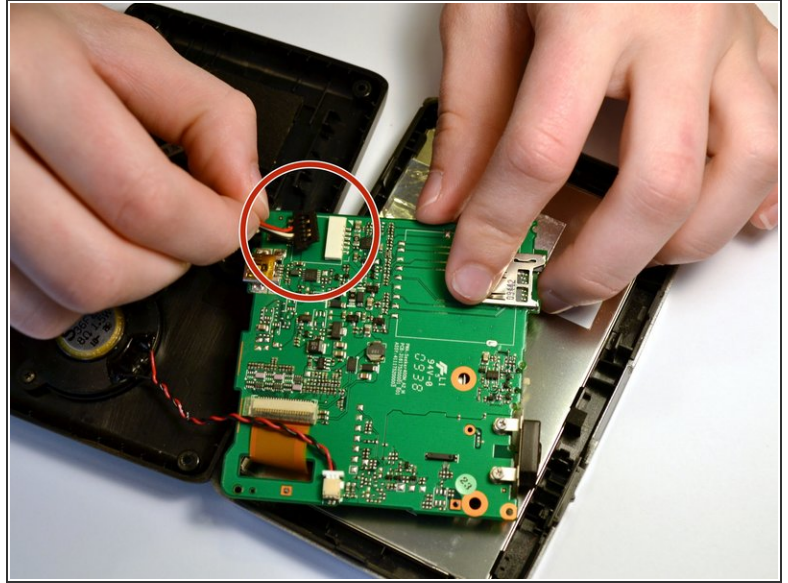
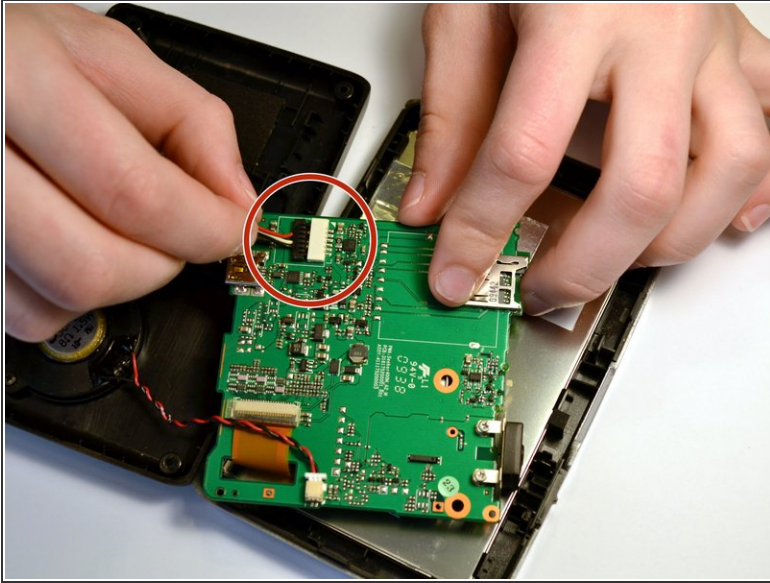


## Step 7



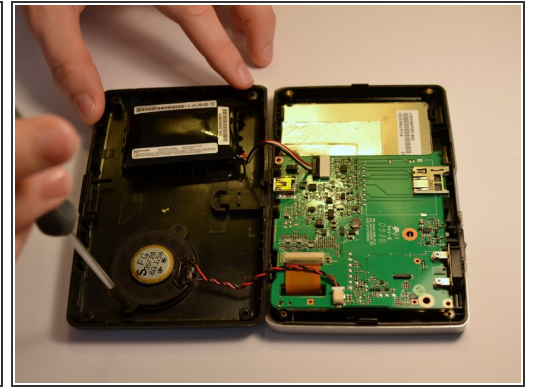
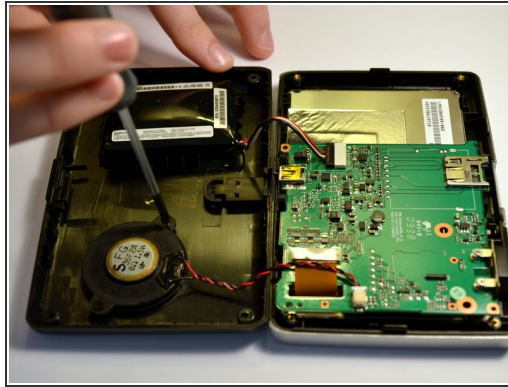
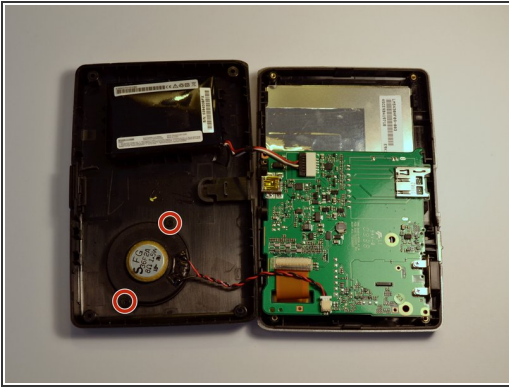
- Lift the battery from the device
- Once the battery is free from the adhesive, remove the piece of tape with a pair of tweezers that is covering the connection of the battery to the motherboard.

## Step 8



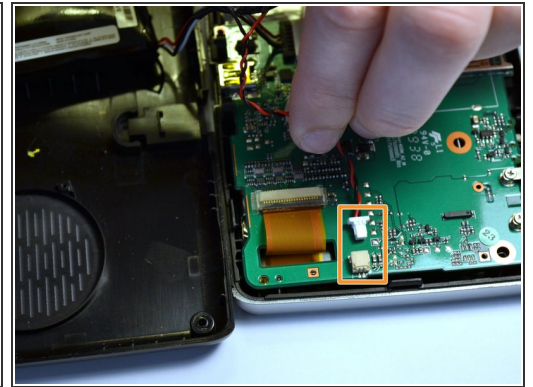
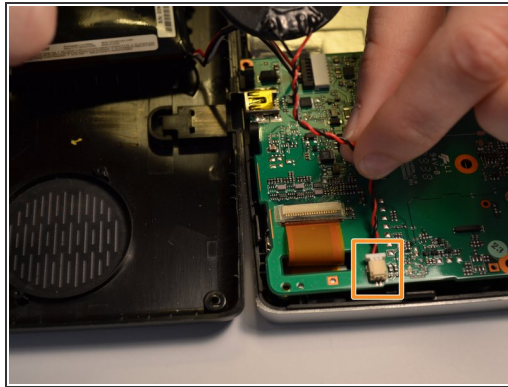
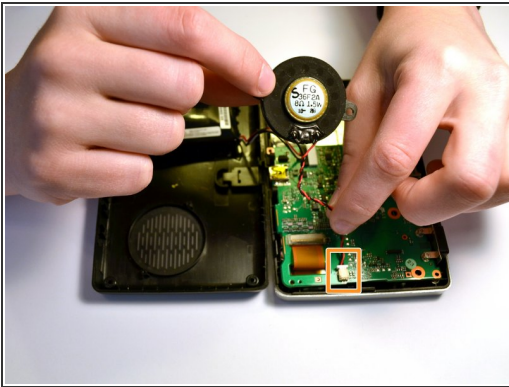
- Unplug the battery from the mother board by pulling back the clips and pulling the wires away from the motherboards receptacle
- ⚠ It is important for your and the device's safety to remove the battery before continuing with any other part removals.
- ℹ It is not necessary to separate the red and white wires from the battery. A replacement battery pack will come with similar wires already attached.

## Step 9 — Speaker



- After the back has been removed, locate each of the screws securing the speaker to the inside of the back cover.
- Use a Phillips #0 screwdriver to remove the two 3.8mm Phillips #0 screws.

## Step 10



- ⓘ The speaker is connected to the motherboard by a few wires
- Gently remove the connector from the motherboard to completely remove the speaker.

To reassemble your device, follow these instructions in reverse order.