



Magellan RoadMate 2120T-LM Display Assembly Replacement

Instructions for replacing the digitizer/LCD of a Magellan RoadMate 2120T-LM.

Written By: John Doe



INTRODUCTION

This guide will walk through the steps of replacing a damaged or unresponsive digitizer/LCD of a Magellan RoadMate 2120T-LM. Before replacing the touch-screen, check for software updates from Magellan to rule out software issues.

TOOLS:

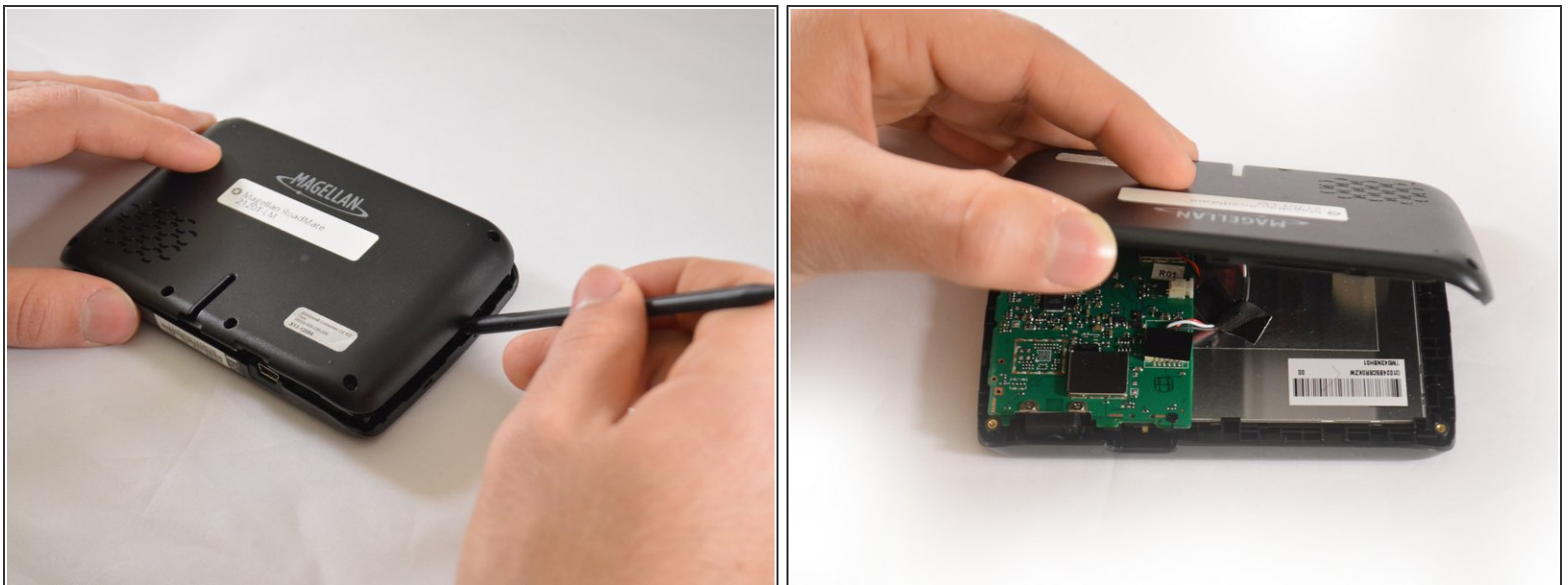
- [Heavy-Duty Spudger](#) (1)
 - [Metal Spudger](#) (1)
 - [Phillips #1 Screwdriver](#) (1)
-

Step 1 — Battery



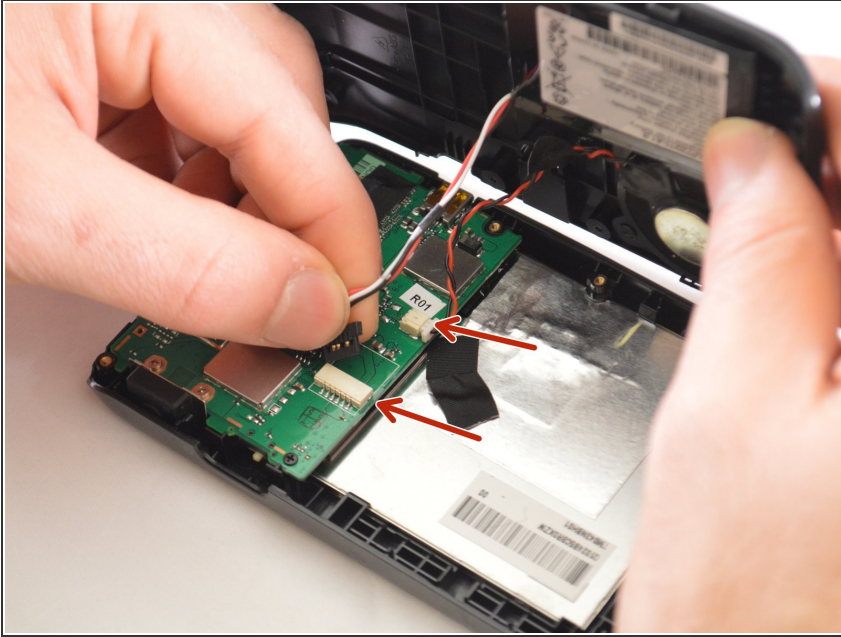
- Turn the GPS over on its backside and remove the six 3 mm Phillips #1 screws.

Step 2



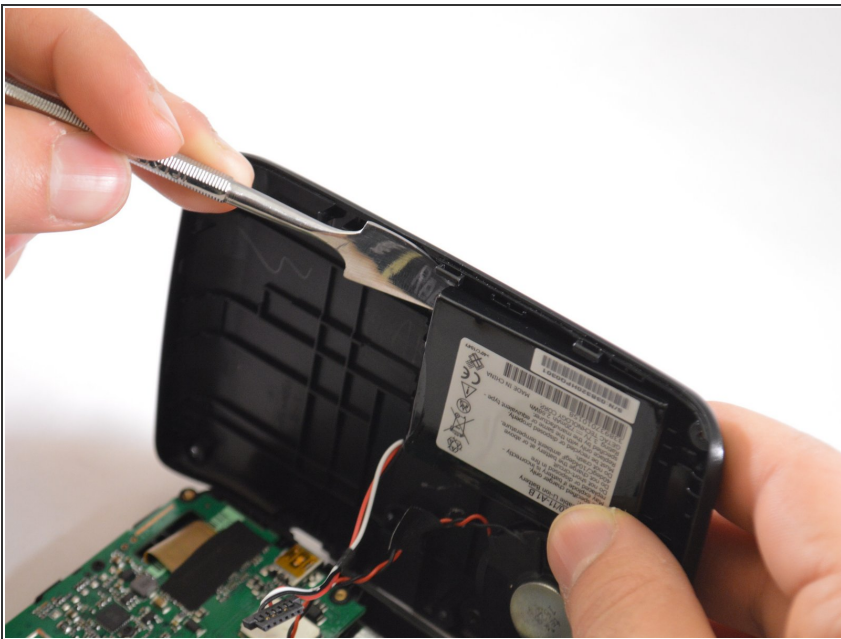
- Pry up on back panel with black spudger

Step 3



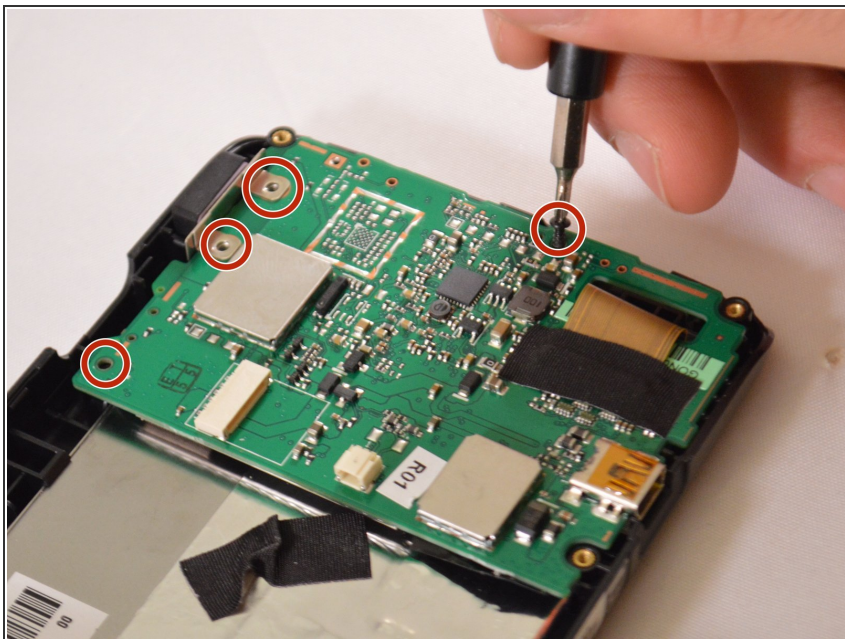
- Disconnect battery and speaker cables from the motherboard at indicated places.

Step 4



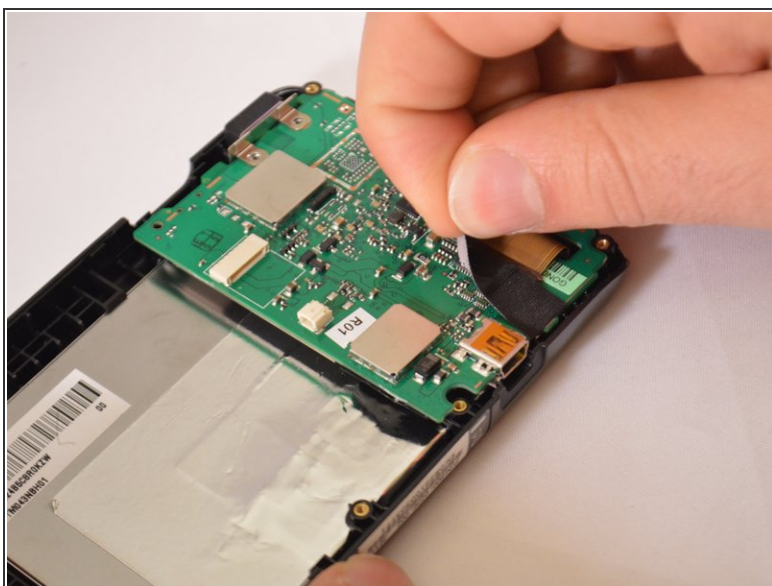
- Use a spudger to remove the battery from the back panel.
- ⚠ If at all possible, please try to use a regular nylon spudger before resorting to a metal spudger. Metal spudgers are much sharper, and have the potential to accidentally pierce the battery.
- ⓘ There is a strong adhesive holding the battery to the back panel.
- ⓘ This step is not a prerequisite for replacement of other components.

Step 5 — Motherboard



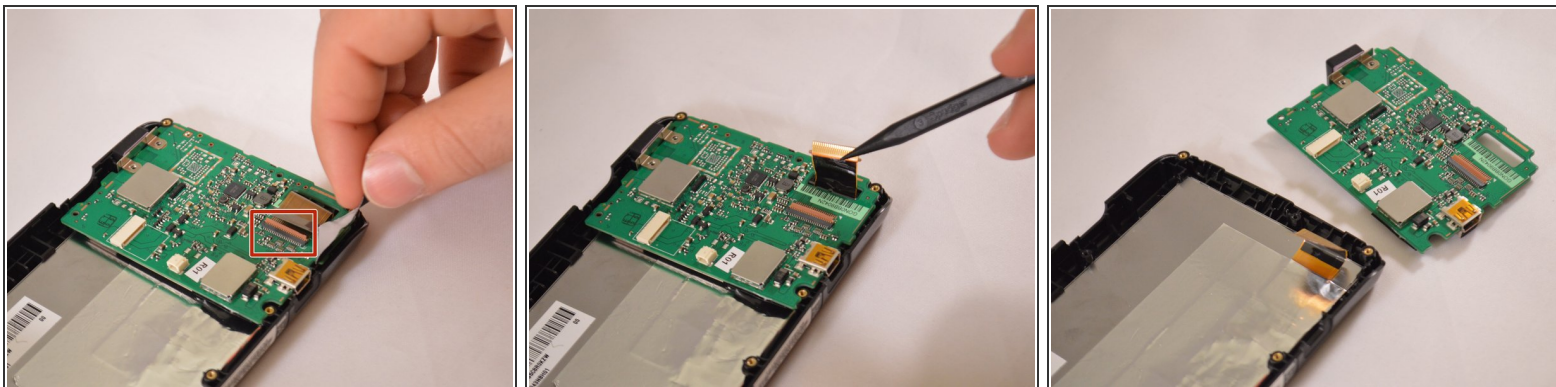
- Remove the four 3 mm Phillips #1 screws from the motherboard.
- ⓘ In the picture three out of four screws have already been removed.

Step 6



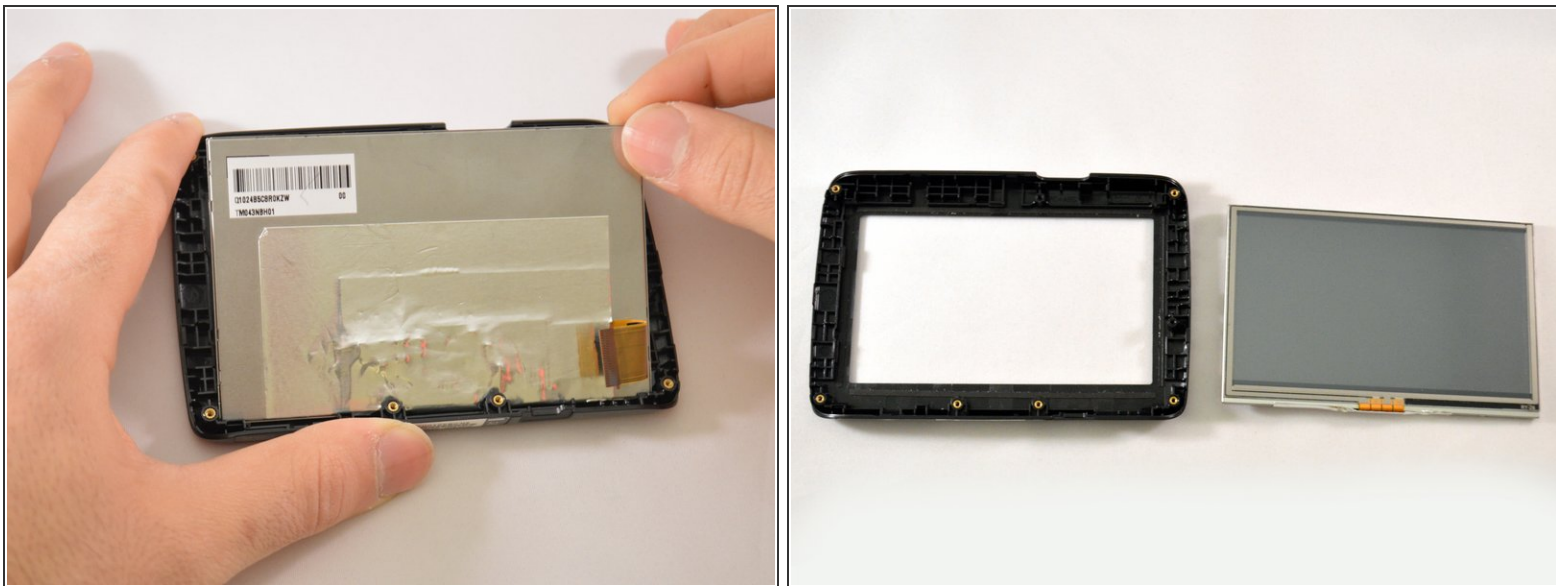
- Remove black tape covering connection ribbon for touch-screen

Step 7



- Pull up on the brown tab holding down the ribbon.
- i* In this picture the brown tab has already been lifted.
- Lift up on the motherboard and remove it from device.

Step 8 — Display Assembly



- Pry back on the plastic shell surrounding the touchscreen and remove the screen.

To reassemble your device, follow these instructions in reverse order.