



Magellan RoadMate 2120T-LM Speaker Replacement

Instructions for replacing the internal speaker of the Magellan RoadMate 2120T-LM.

Written By: John Doe



INTRODUCTION

This guide walks through the process of replacing the internal speaker of a Magellan RoadMate 2120T-LM. The process is very simple and will only take about 15 minutes to complete.



TOOLS:

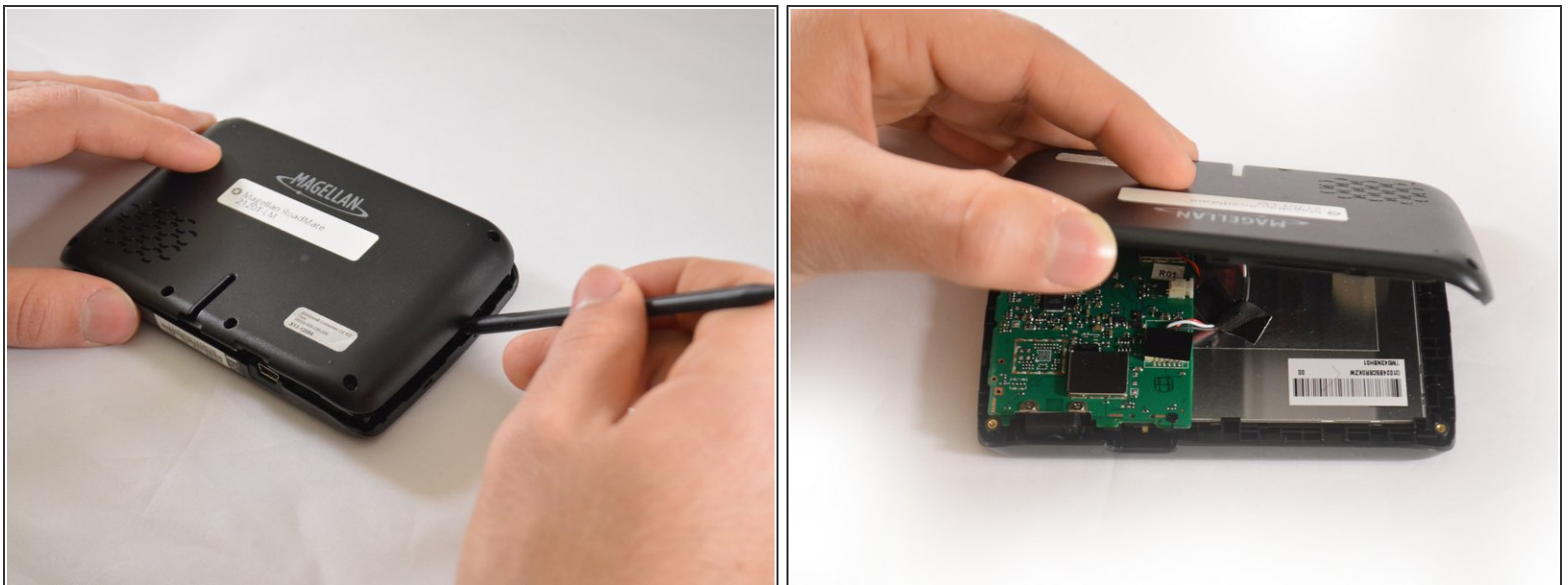
- [Heavy-Duty Spudger](#) (1)
 - [Metal Spudger](#) (1)
 - [Phillips #1 Screwdriver](#) (1)
-

Step 1 — Battery



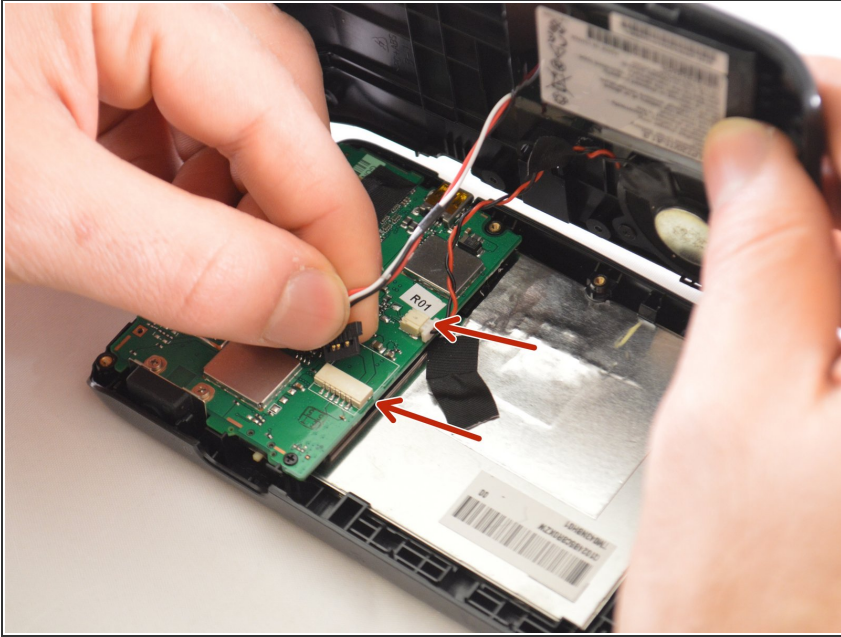
- Turn the GPS over on its backside and remove the six 3 mm Phillips #1 screws.

Step 2



- Pry up on back panel with black spudger

Step 3



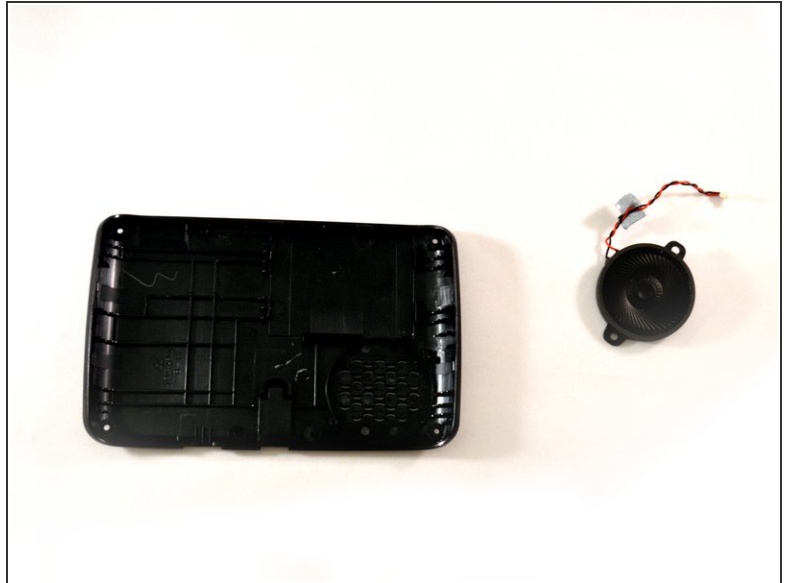
- Disconnect battery and speaker cables from the motherboard at indicated places.

Step 4



- Use a spudger to remove the battery from the back panel.
- ⚠ If at all possible, please try to use a regular nylon spudger before resorting to a metal spudger. Metal spudgers are much sharper, and have the potential to accidentally pierce the battery.
- ⓘ There is a strong adhesive holding the battery to the back panel.
- ⓘ This step is not a prerequisite for replacement of other components.

Step 5 — Speaker



- Locate the internal speaker just above the battery
- Remove the two 3 mm Phillips #1 screws.

To reassemble your device, follow these instructions in reverse order.