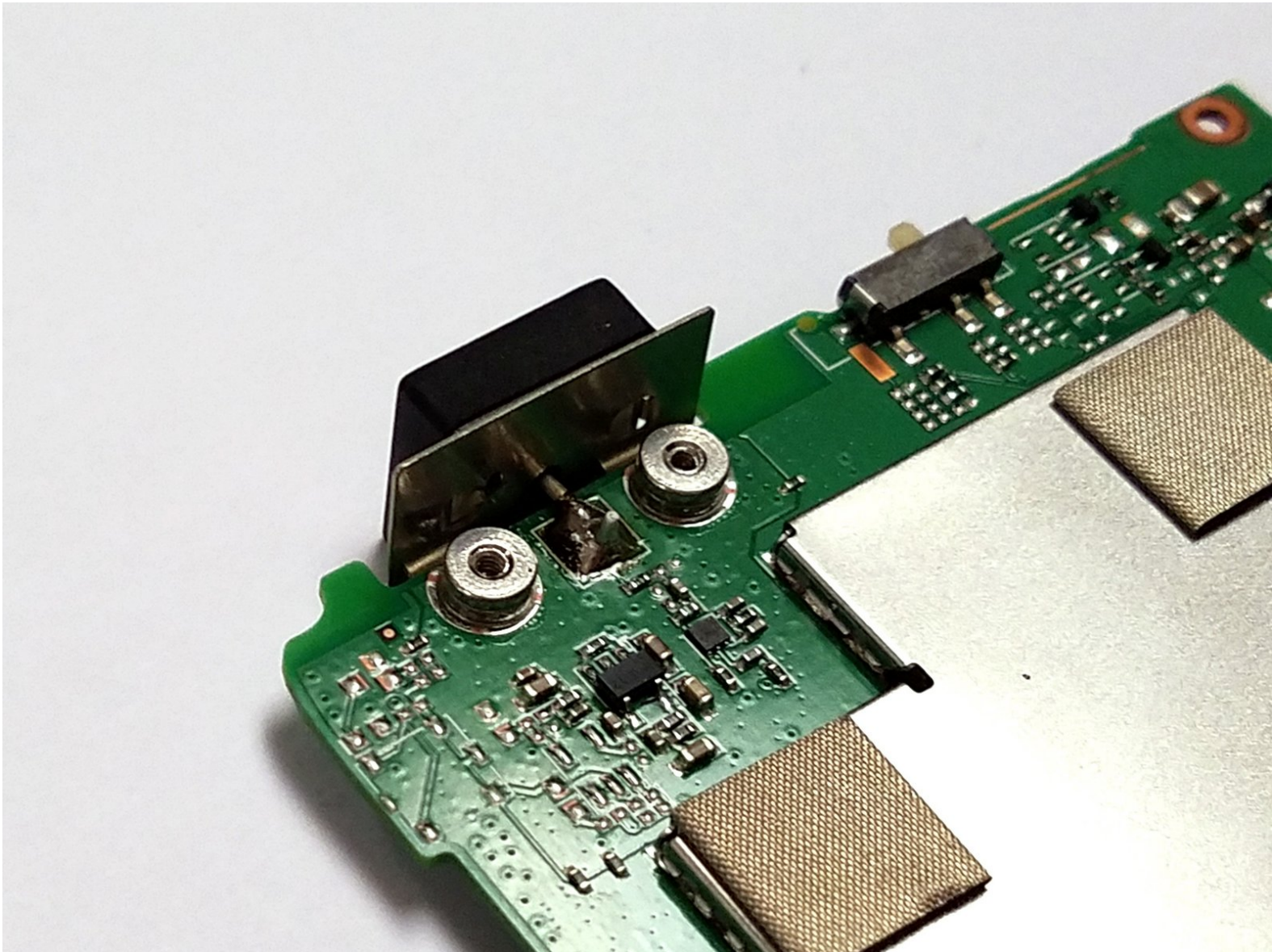




Magellan RoadMate 5120-LMTX Antenna Replacement

This guide will help you replace a faulty GPS antenna in your Magellan RoadMate 5120-LMTX.

Written By: Steven Prout



INTRODUCTION

If your Magellan RoadMate is experiencing positioning issues it may have a faulty GPS antenna. Here are the steps for replacing your Magellan RoadMate 5120-LMTX GPS Antenna. This replacement does involve a very simple soldering of a connection.




TOOLS:

- [iFixit Opening Tools](#) (1)
 - [Phillips #00 Screwdriver](#) (1)
 - [Spudger](#) (1)
-


Step 1 — Back Cover



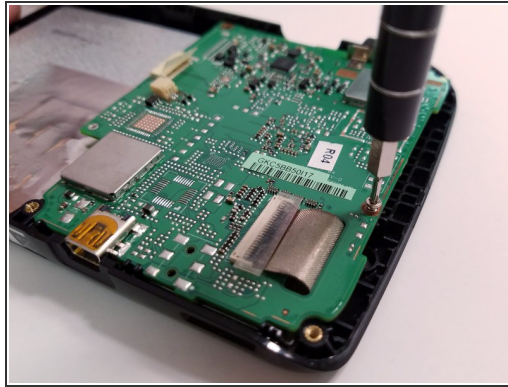
-  Power off the Magellan RoadMate before beginning.
- Remove the six 5mm Phillips #00 screws from the back of device.

Step 2



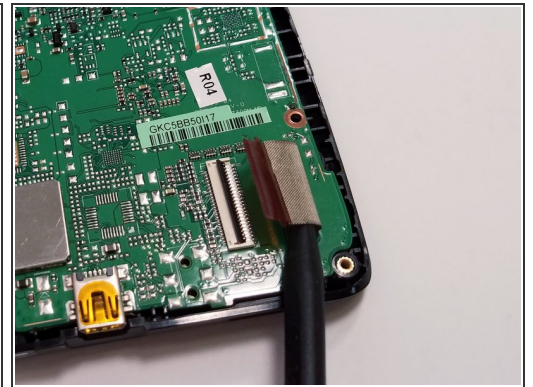
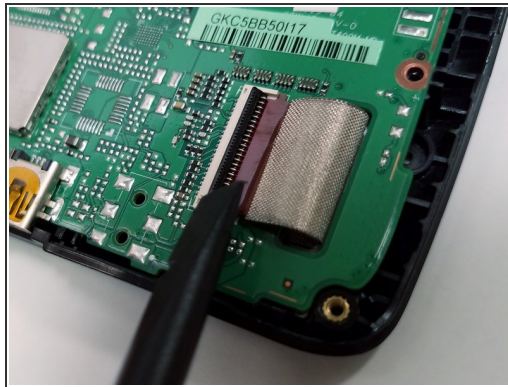
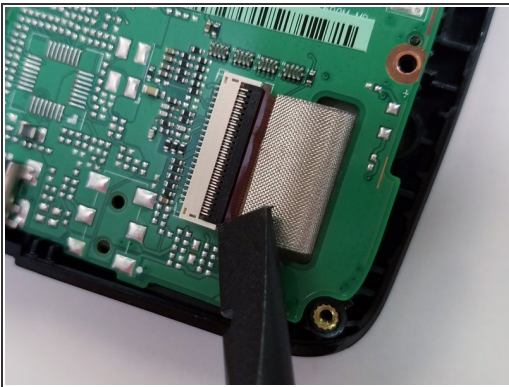
- Pry back cover off with a plastic opening tool just enough to see where the speaker is attached to the motherboard.
-  Do not fully open the back cover or you risk damaging the speaker wire.
- Use a spudger to disconnect the speaker connection from the motherboard.

Step 3 — Motherboard



- There will be two 5mm Phillips #00 screws that need to be removed from the motherboard.


Step 4



- Some devices may have a piece of tape or plastic over the ribbon cable latch. If your device has this, remove it before continuing.
- Carefully lift the black ribbon cable latch upwards with a spudger or other similar tool.
- Once the ribbon cable latch is opened, insert the pointed end of the spudger, or other similar tool, underneath the ribbon cable.
- Slowly pull out the ribbon cable in a straight, flat motion with respect to the latch.

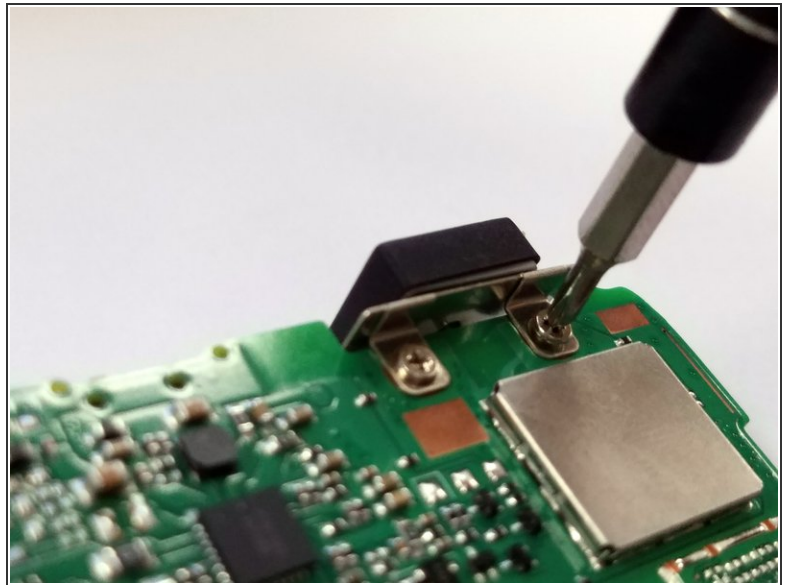
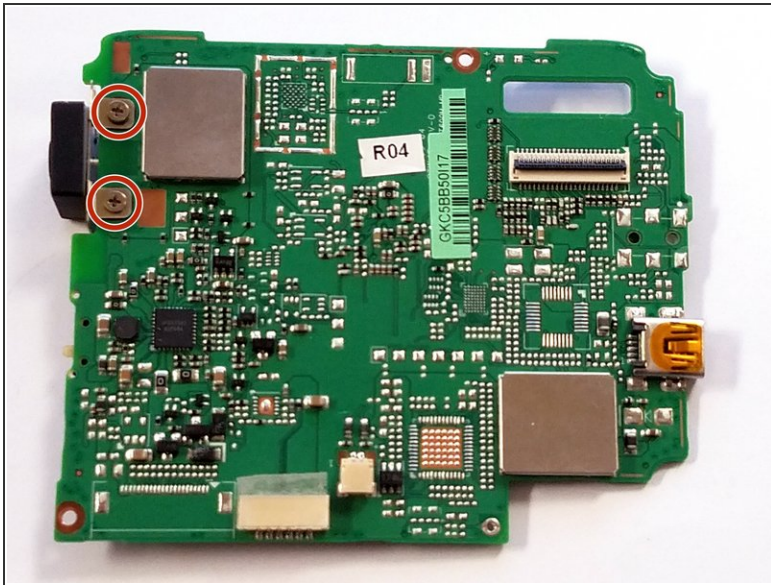
Step 5



 Be careful not to touch any of the electrical components on the motherboard as damage may ensue.

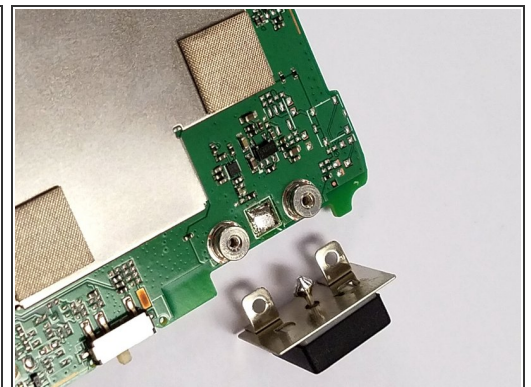
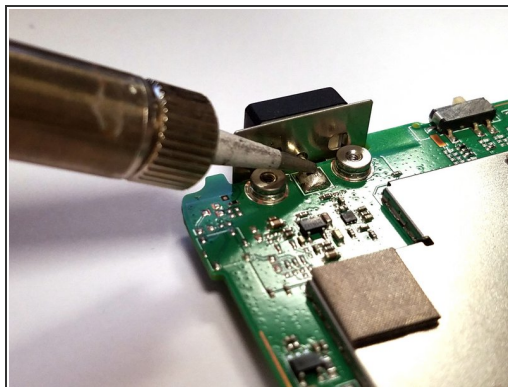
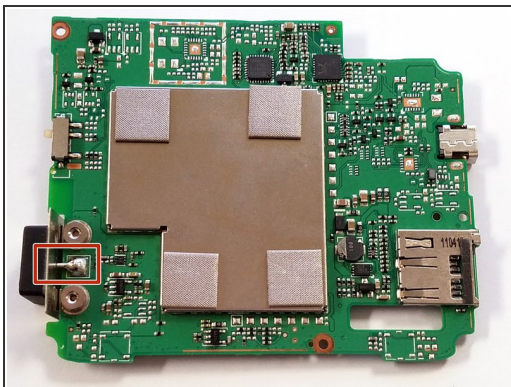
- Carefully lift the motherboard out of the plastic housing by the edges while guiding the ribbon cable through the slot.
- Store the motherboard on a safe non-conductive surface, preferably an anti-static mat.

Step 6 — Antenna



- Remove the two 2.4mm Phillips #00 screws that hold the antenna to the motherboard.

Step 7



- Flip the motherboard over and locate the soldered antenna connection.
- Melt the existing solder with the tip of your soldering iron while gently pulling on the antenna. The antenna should come off easily.
- ☑ When reassembling your device, attach your new antenna to the motherboard using the two 2.4mm Phillips #00 screws before soldering. This will help to align the parts properly and make them easier to solder.

To reassemble your device, follow all instructions before soldering step in reverse order.