



# Magellan RoadMate 5120-LMTX Battery Replacement

Replace your dying battery to bring the power back to your Magellan Roadmate 5120-LMTX.

Written By: Steven Prout



---

## INTRODUCTION

Rechargeable batteries eventually degrade and lose their ability to hold a charge. Once this happens, the only fix is to replace the battery. Ensure that your device is powered off before beginning this step.


---

### TOOLS:

- [iFixit Opening Tools](#) (1)
  - [Phillips #00 Screwdriver](#) (1)
  - [Spudger](#) (1)
-


## Step 1 — Back Cover



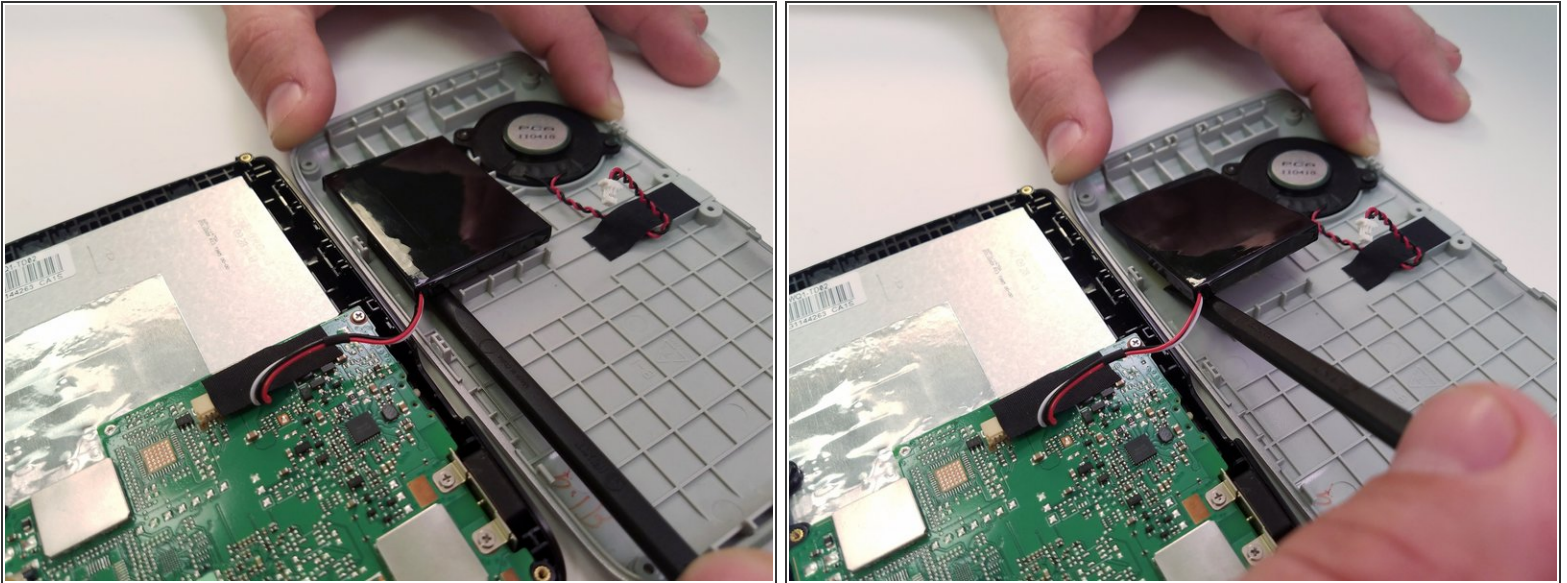
-  Power off the Magellan RoadMate before beginning.
- Remove the six 5mm Phillips #00 screws from the back of device.

## Step 2



- Pry back cover off with a plastic opening tool just enough to see where the speaker is attached to the motherboard.
-  Do not fully open the back cover or you risk damaging the speaker wire.
- Use a spudger to disconnect the speaker connection from the motherboard.

## Step 3 — Battery



- Run the tip of a spudger between the battery and the housing to loosen the double-sided tape holding the battery in.
- Still using the spudger tool, pry the battery from the housing.
- ⓘ If you damage the tape while trying to remove the battery, you can replace it with any double-sided tape.



## Step 4



- Pull the edge of the tape up to remove the tape that holds the battery wire to the motherboard.
- ⓘ There is a clear rectangular adhesive strip that also needs to be removed with the pointy end of a spudger.
- Slowly pull the connection from the motherboard.
- ⚠ Do not pull too hard or you will risk damaging the wires.

To reassemble your device, follow these instructions in reverse order.