



Magellan RoadMate 5120-LMTX Screen Replacement

Replace a faulty or broken screen in order to use the touch capabilities on the device again.

Written By: Chris Blaskowski



INTRODUCTION

Removing the screen requires many other components to be removed first. This is not challenging, but can be time consuming. Notice that there are different sized screws and ensure they stay separate so that the proper screws can be used during reassembly. Retain all tape used to hold speaker wires down and be careful when opening the device because there is a wire that could easily be damaged.




TOOLS:

- [iFixit Opening Tools](#) (1)
 - [Phillips #00 Screwdriver](#) (1)
 - [Spudger](#) (1)
-


Step 1 — Back Cover



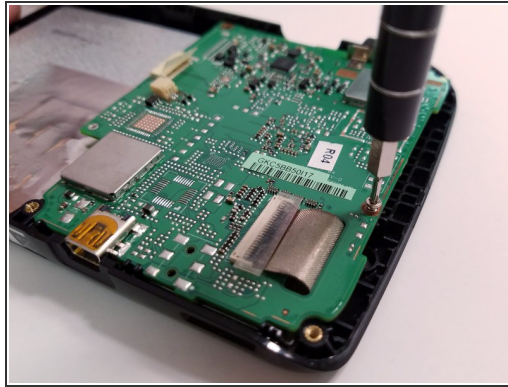
-  Power off the Magellan RoadMate before beginning.
- Remove the six 5mm Phillips #00 screws from the back of device.

Step 2



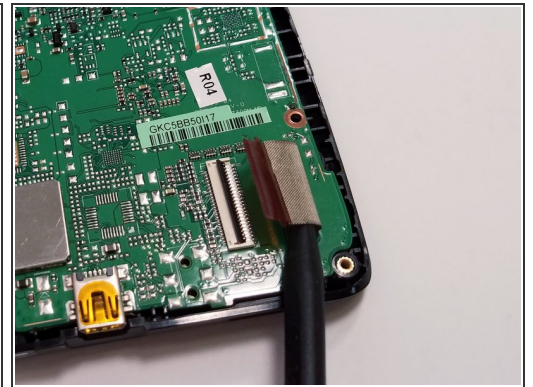
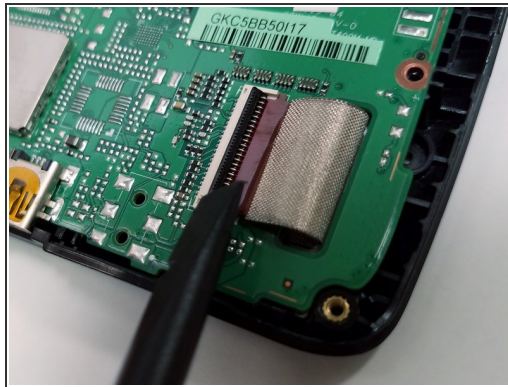
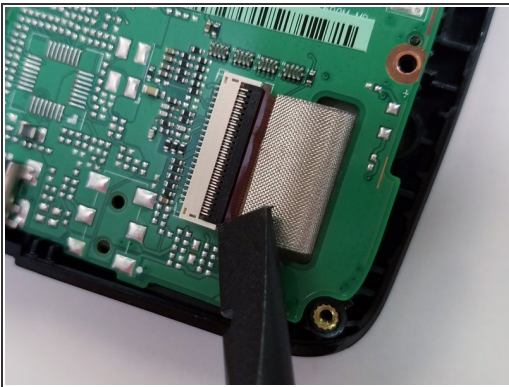
- Pry back cover off with a plastic opening tool just enough to see where the speaker is attached to the motherboard.
-  Do not fully open the back cover or you risk damaging the speaker wire.
- Use a spudger to disconnect the speaker connection from the motherboard.

Step 3 — Motherboard



- There will be two 5mm Phillips #00 screws that need to be removed from the motherboard.


Step 4



- Some devices may have a piece of tape or plastic over the ribbon cable latch. If your device has this, remove it before continuing.
- Carefully lift the black ribbon cable latch upwards with a spudger or other similar tool.
- Once the ribbon cable latch is opened, insert the pointed end of the spudger, or other similar tool, underneath the ribbon cable.
- Slowly pull out the ribbon cable in a straight, flat motion with respect to the latch.

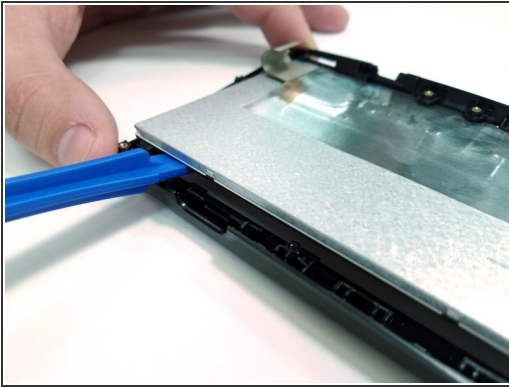
Step 5



 Be careful not to touch any of the electrical components on the motherboard as damage may ensue.

- Carefully lift the motherboard out of the plastic housing by the edges while guiding the ribbon cable through the slot.
- Store the motherboard on a safe non-conductive surface, preferably an anti-static mat.

Step 6 — Screen



- Use a plastic opening tool to release the screen from the tabs.
- ⚠ Using too much force can break the tabs.
- Lift and slide the screen out from the housing.
- ℹ If the screen is cracked, be careful of sharp or loose glass shards.

To reassemble your device, follow these instructions in reverse order.