



Magellan RoadMate 5236T-LM Back Cover Replacement

This guide will walk you through the steps for replacing the back cover of a Magellan RoadMate 5236T-LM.

Written By: Megan Scribner



INTRODUCTION

Cracked plastic casing? This guide will help you replace the back cover of the Magellan RoadMate 5236T-LM.



TOOLS:

- [Phillips #000 Screwdriver](#) (1)
 - [iFixit Opening Tools](#) (1)
-

Step 1 — Back Cover



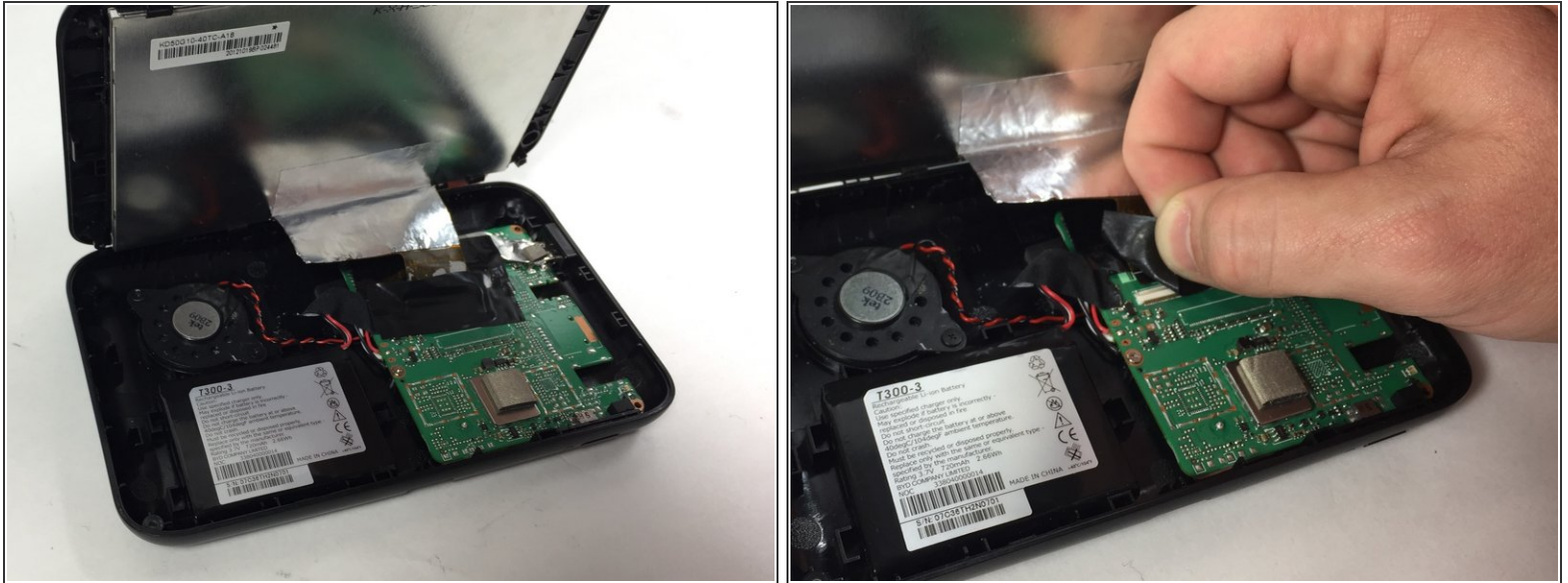
- Place the device face down on a flat surface.
- Remove the four 5mm screws at each corner using a #000 Phillips head screwdriver.

Step 2



- Gently wedge a plastic opening tool into the seam along the side of the device.
- Slide the tool along the seam to pry apart the front and back covers.

Step 3



- A ribbon cable attaches the display screen and the motherboard via a ZIF connector. Remove the tape covering where the ZIF connector connects to the mother board.
- Use tweezers to disconnect the ZIF connector from the motherboard.
- ⓘ The ZIF connector may disconnect itself from the motherboard when removing the tape.

To reassemble your device, follow these instructions in reverse order.