



# Magellan RoadMate 5250T-LM Battery Replacement

Replace your dying battery to bring power back to your Magellan Roadmate 5250T-LM.

Written By: Amanda



## INTRODUCTION

This guide will show you how to remove and replace the battery inside your Magellan Roadmate 5250T-LM. It would be helpful to know how to solder before attempting this replacement. To remove the battery you must desolder it from the motherboard. After this, you will need to solder your new battery back on to the motherboard.



### TOOLS:

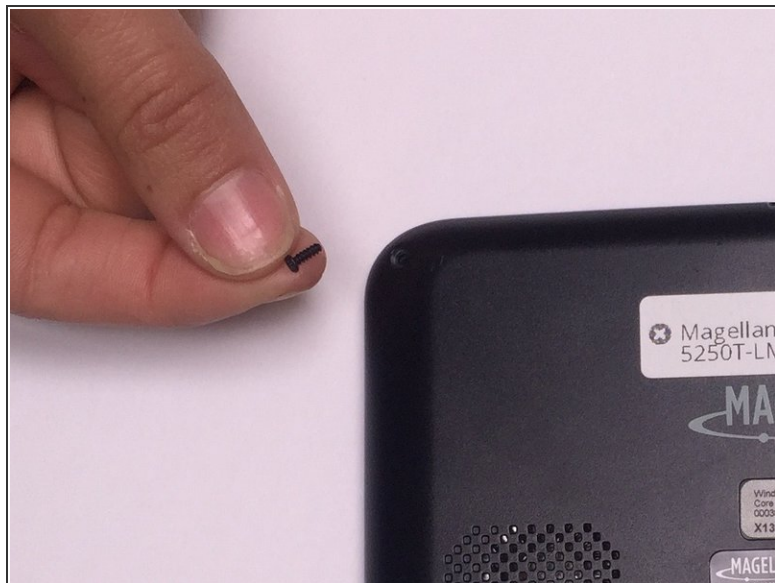
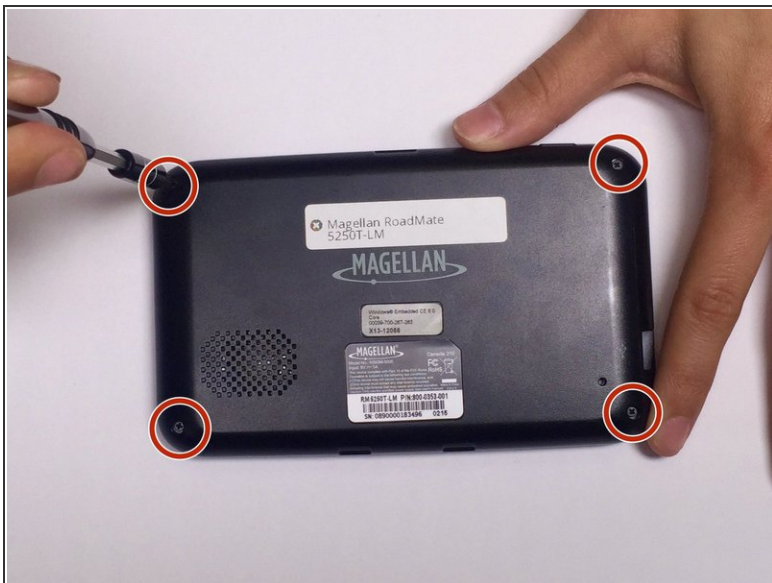
- [Phillips #000 Screwdriver](#) (1)
- [Spudger](#) (1)
- [Soldering Iron](#) (1)
- [iFixit Opening Tools](#) (1)



### PARTS:

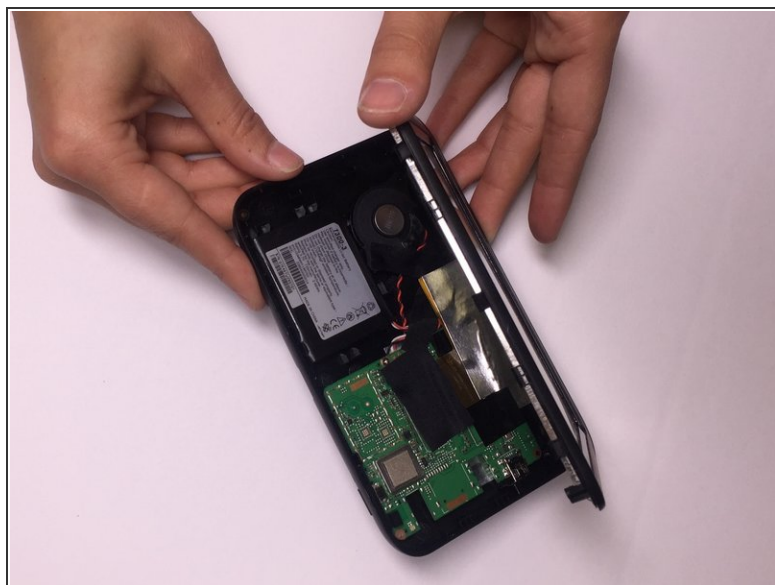
- [Magellan Roadmate 5250T-LM Replacement Battery](#) (1)

## Step 1 — Battery



- Remove all four 5 mm screws from the back of the device using a Phillips Head screwdriver size 000.

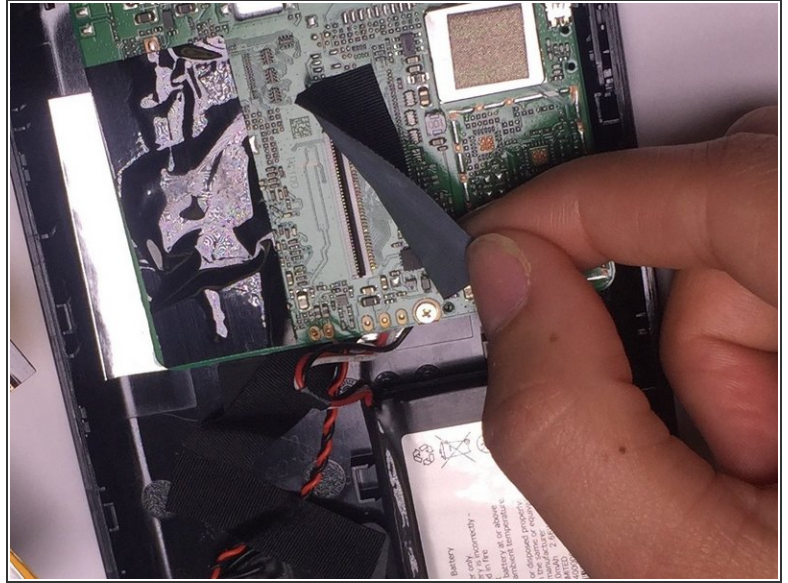
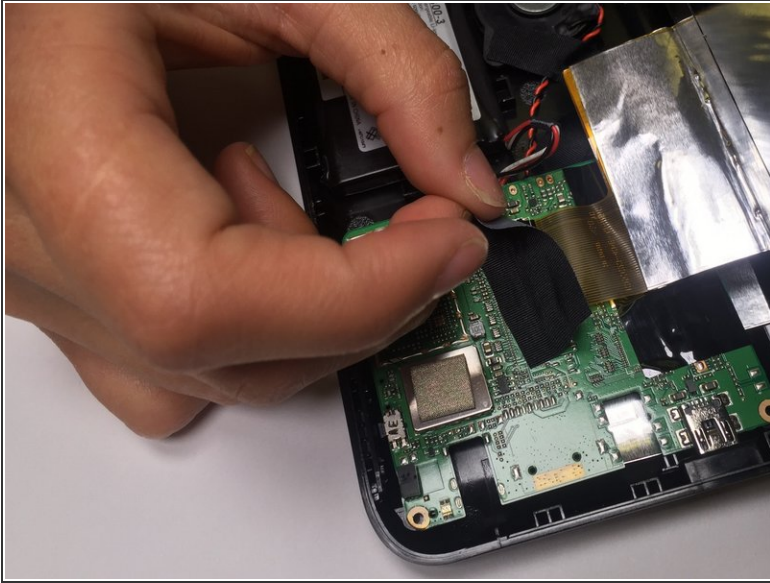
## Step 2




- Open the casing of the device using a plastic opening tool.



## Step 3



- Remove the tape covering the display connector on top of the motherboard.
- Use a nylon spudger to flip up the black tab on the ZIF connector.
- Pull the ribbon cable out with tweezers.

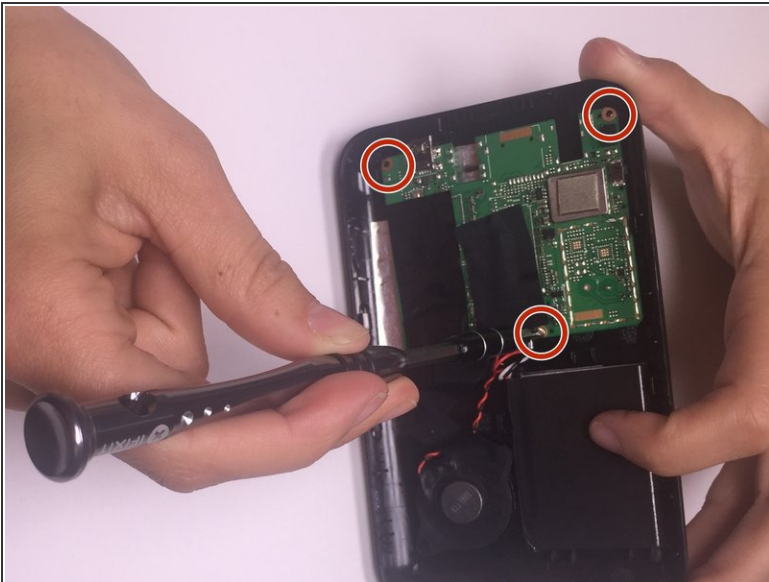
 The ribbon cable may fall out once the tape is removed.

## Step 4



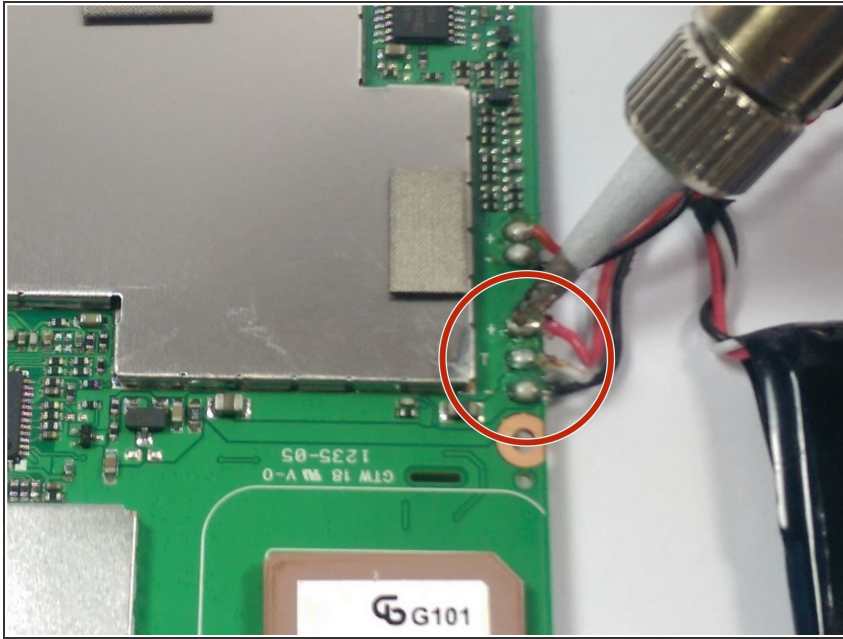
- Pry off the original battery using a spudger to break the adhesive that connects the battery to the back casing.

## Step 5



- Remove the motherboard from the device by unscrewing all three 4 mm screws that are connecting it to the casing with a Phillips Head screwdriver size 000.

## Step 6



- Disconnect the original battery from the motherboard by desoldering all three wires that attach it to the motherboard.
- ⓘ Click [here](#) to refer to iFixit's soldering technique guide for this step.

To reassemble your device, follow these instructions in reverse order.