



# Magellan RoadMate 5250T-LM Screen Replacement

A guide to removing the RoadMate's screen.

Written By: Jaimee Mound



---

## INTRODUCTION

This guide will walk you through the step-by-step instructions on how to remove and replace a Magellan RoadMate 5250T-LM display.

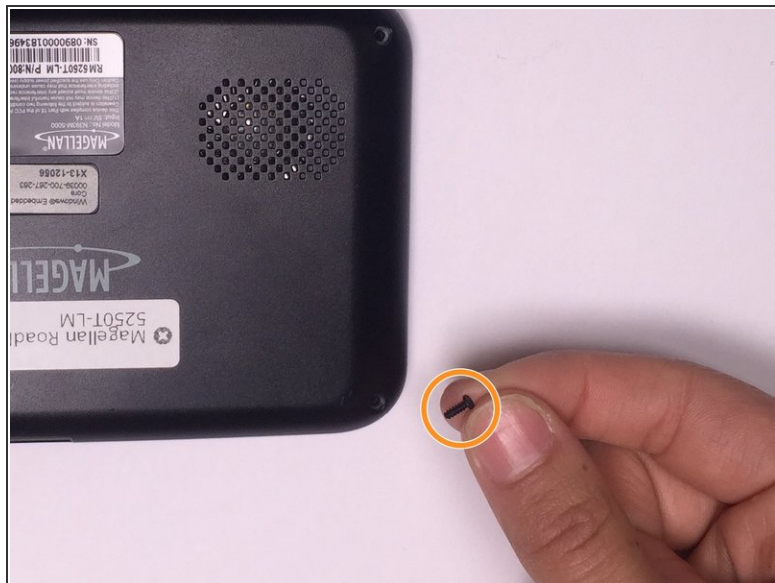
---



### TOOLS:

- [Phillips #000 Screwdriver](#) (1)
  - [Spudger](#) (1)
  - [iFixit Opening Tools](#) (1)
-

## Step 1 — Screen



- Holding the device in place, remove all four 5 mm screws from the back of the device using a Philips Head #000 screwdriver.
- Place screws aside. Make sure they are easily accessible for reassembling the device.

## Step 2



- Lift the back cover using a spudger.

⚠ Remove back cover slowly and carefully to prevent damage.

## Step 3




- Peel back the tape securing the display connector to the motherboard.

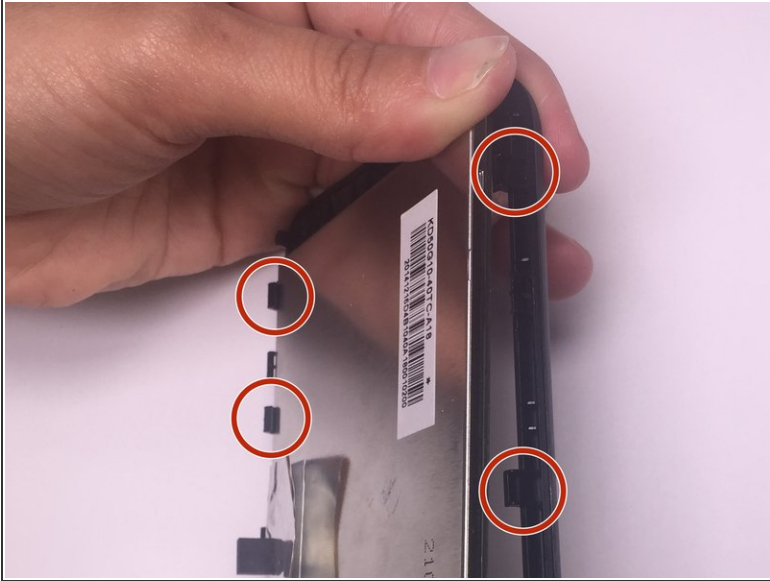
⚠ To ensure proper reassembly, do not remove or fold edges of tape.

- Use a nylon spudger to flip up the black tab on the ZIF connector.
- Pull the ribbon cable out with tweezers.



 The ribbon cable may fall out once the tape is removed.

## Step 4



- Undo the four clamps holding down the display.
- Remove the display from the front cover.

To reassemble your device, follow these instructions in reverse order.