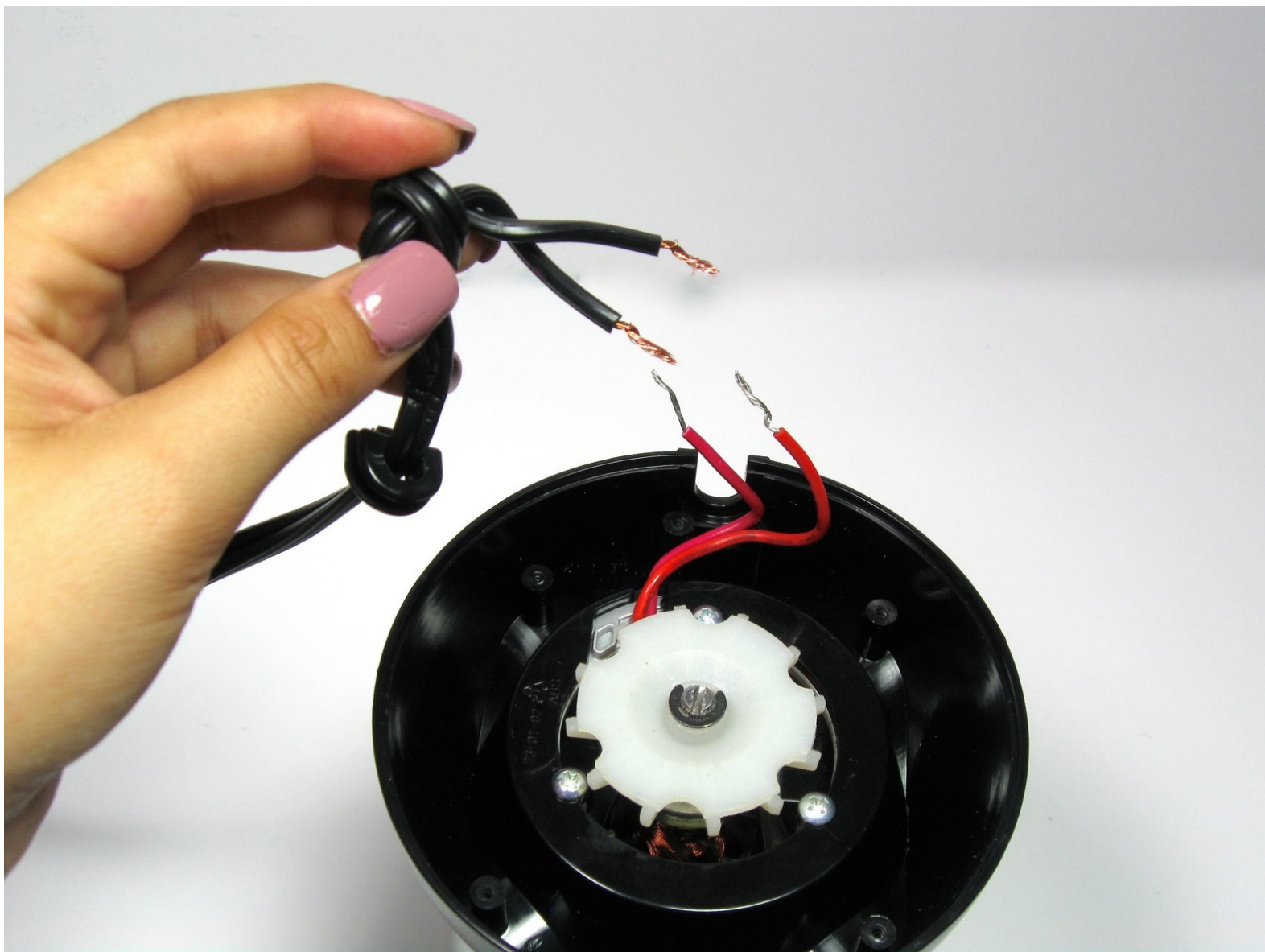




Magic Bullet MB1001B Power Cord Replacement

Replacing the power cord on your Magic Bullet MB1001B.

Written By: Bridget Carr



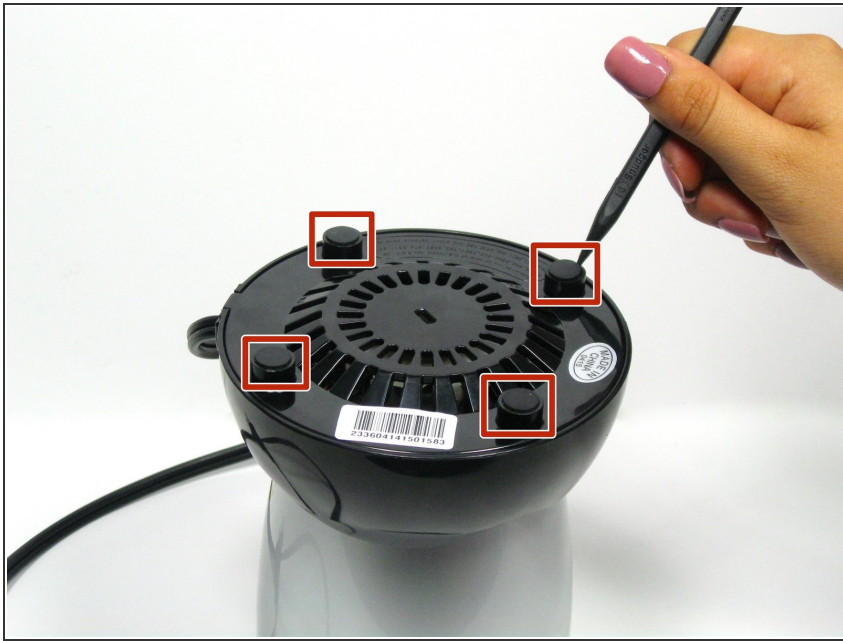
INTRODUCTION

Having trouble turning on your Magic Bullet? This guide will help you replace the power cord.

TOOLS:

- [Spudger](#) (1)
 - [Phillips #0 Screwdriver](#) (1)
 - [Phillips #1 Screwdriver](#) (1)
 - [Slip Joint Pliers](#) (1)
-

Step 1 — Power Cord



- Remove the four rubber pegs from the feet on the base of the Magic Bullet using the spudger.

Step 2



- Remove the four 14.0 mm Phillips head screws in the feet of the base of the Magic Bullet using the Phillips #1 screwdriver.

Step 3



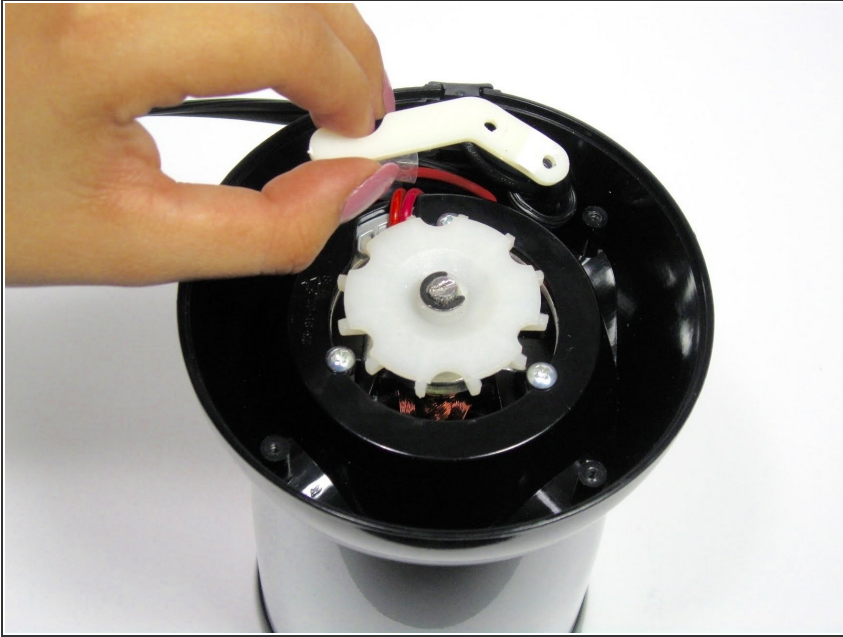
- Remove the black base plate.

Step 4



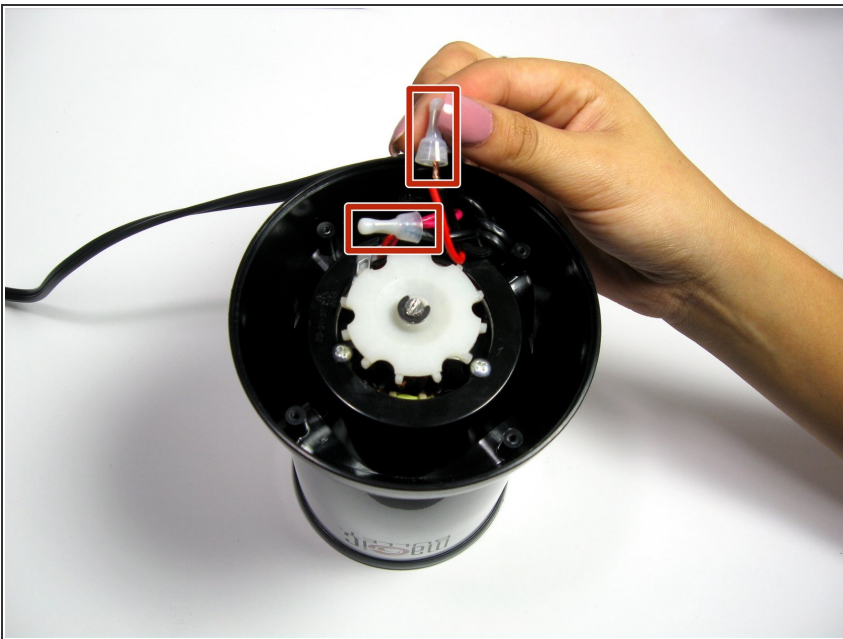
- Remove the two 13.0 mm Phillips head screws from the white plastic cable guide using a Phillips #1 screwdriver.

Step 5



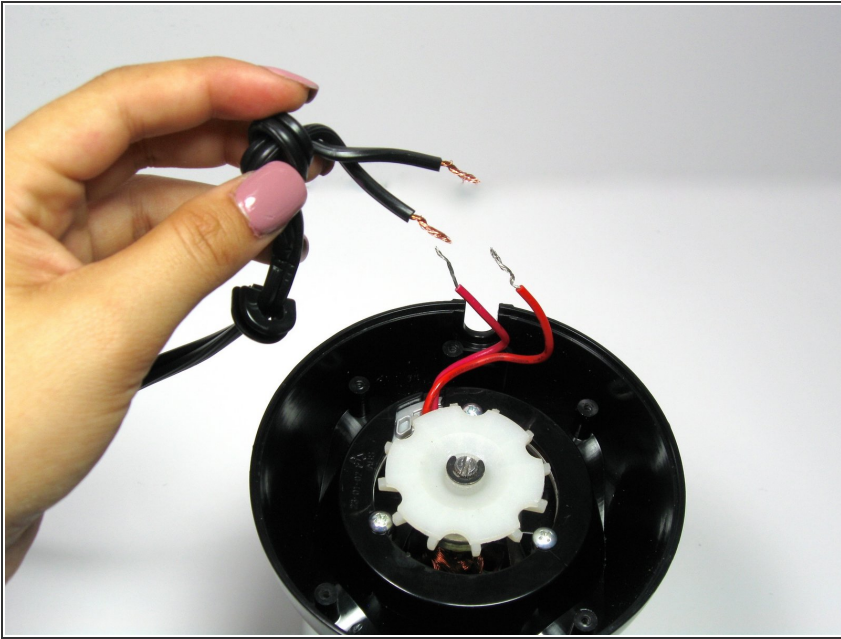
- Remove the white plastic cable guide.

Step 6



- Remove the two crimp caps from the end of the wires.
- ⓘ You will need to purchase new crimp caps and use pliers to crimp the new crimp caps on the connected wires during reassembly.

Step 7



- Separate the black wires of the power cord from the red wires on the Magic Bullet base.
- ⓘ Be sure to mark which wires are connected before separating them to ensure that they are properly reconnected during reassembly.

To reassemble your device, follow these instructions in reverse order.