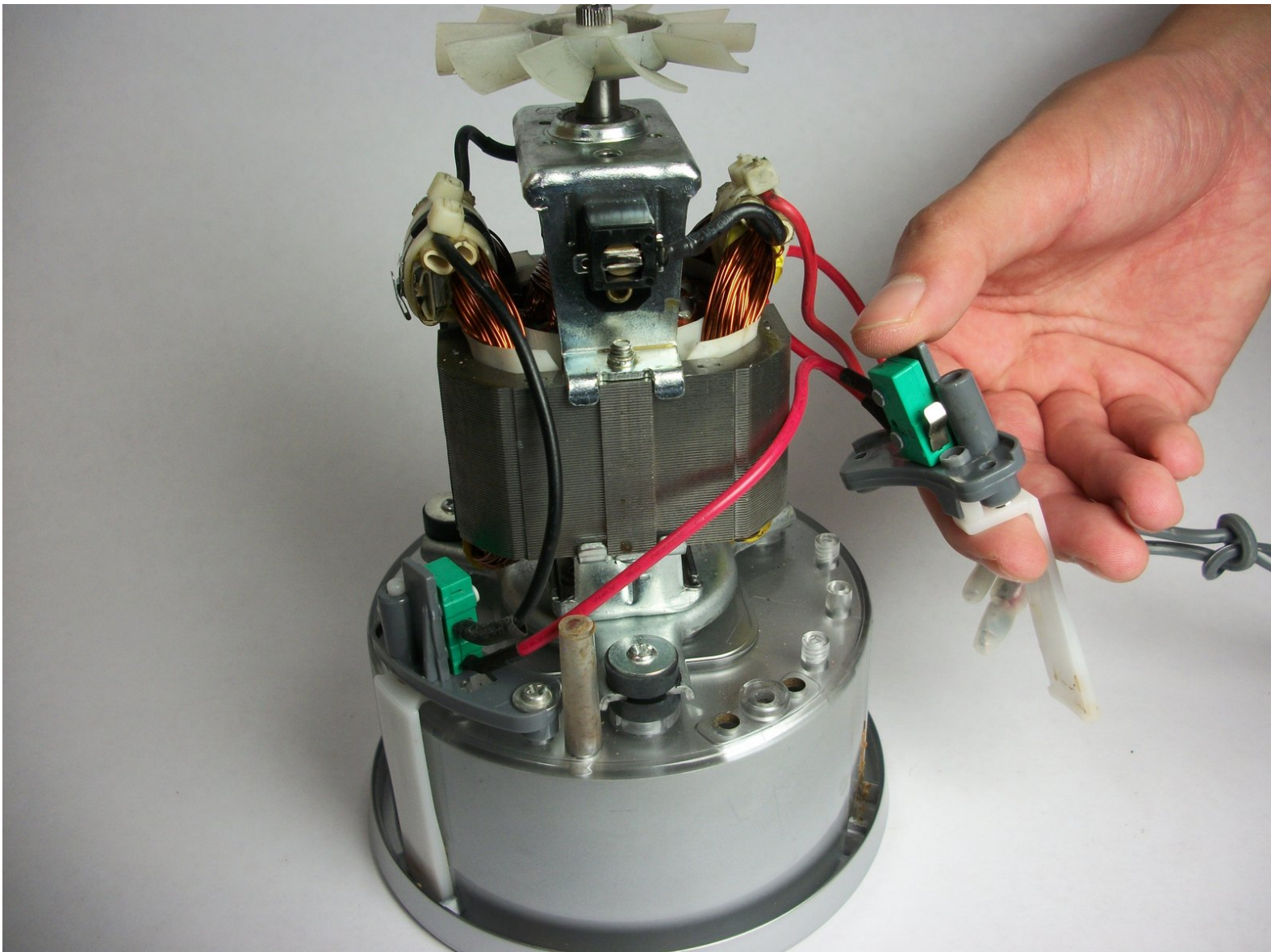




# Magic Bullet NutriBullet Activator Replacement

Replace or repair the plastic activators which triggers the NutriBullet blending process.

Written By: Angela Wong



---

## INTRODUCTION

On the top of the NutriBullet powerbase, there are three white activators that initiate the active blending process. This replacement guide will provide instructions on how to replace these activators.

---

### TOOLS:

- [Phillips #2 Screwdriver](#) (1)
-

## Step 1 — Curve Base



- Unplug the device from the wall and turn the powerbase upside down.

## Step 2



- Use a #2 Phillips Head Screwdriver to unscrew the four 10 mm screws located on the bottom of the power base.



### Step 3



- Use slight tension to remove the plastic base from the NutriBullet once all of the screws are removed.
- ⚠ Once the plastic base is removed, there is a fan located in the center of the powerbase. Make sure the cord does not get caught or frayed by the fan.

### Step 4



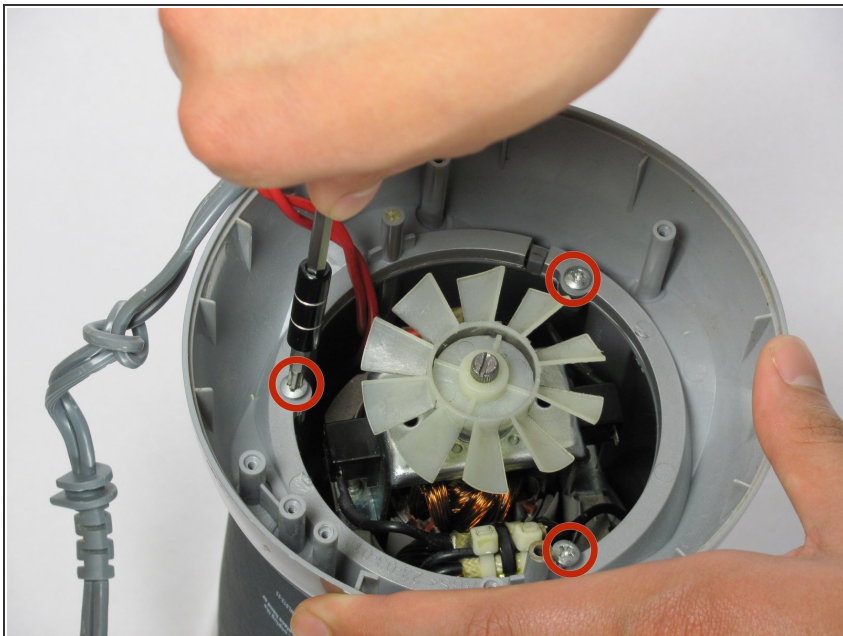
- Lift the power cord to remove it from the side slot on the curved base.

## Step 5



- Use a #2 Phillips Head Screwdriver to remove the two 10 mm screws that secure the white bracket down.
- ⓘ The white safety bracket holds the cord down. After removing it, the cord will be loosened.

## Step 6



- Use a #2 Phillips Head Screwdriver to remove the three 10mm screws that keep the base in place.

## Step 7



- Use slight tension to remove the curved base by lifting it upward off of the outside casing.

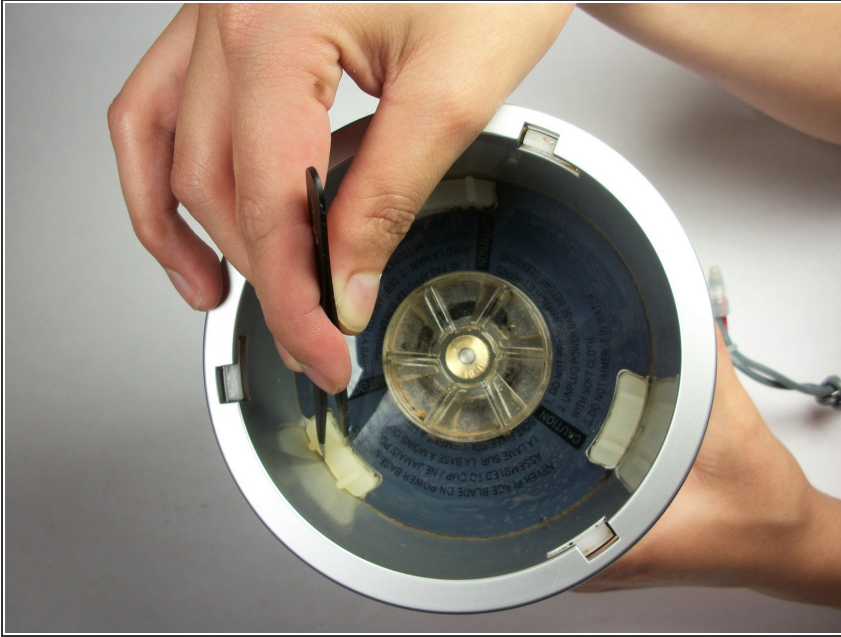
## Step 8 — Outside Casing



- Wiggle the outside casing upward until it separates from the powerbase.
- ① Hold the ring at the bottom of the powerbase to receive a better grip.

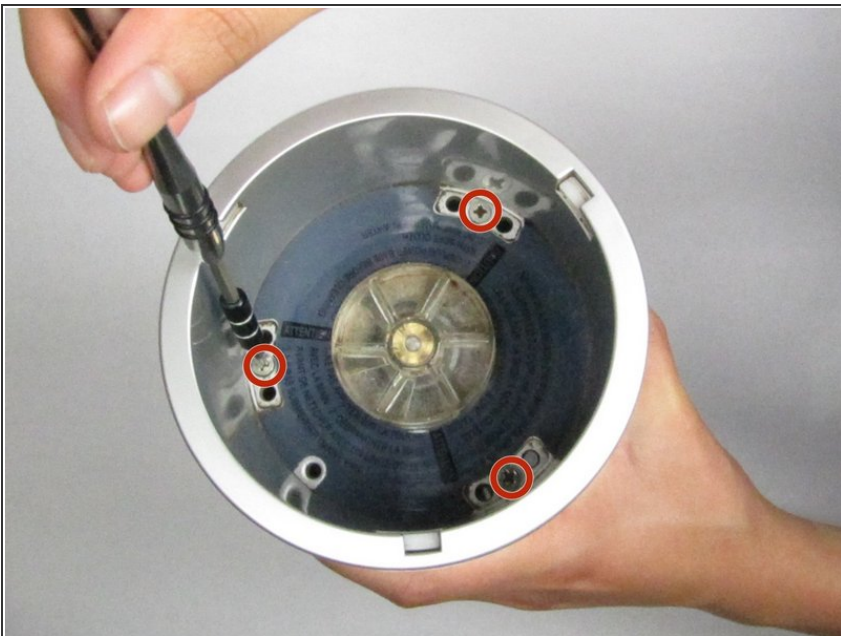


## Step 9 — Rubber Covers



- Place the NutriBullet powerbase on the table so that the white activators are visible. Remove the three rubber protectors from the activators using either tweezers or your fingers.

## Step 10 — Top Screws



- Remove the three 15mm screws with the Philips Head 2 Screwdriver.

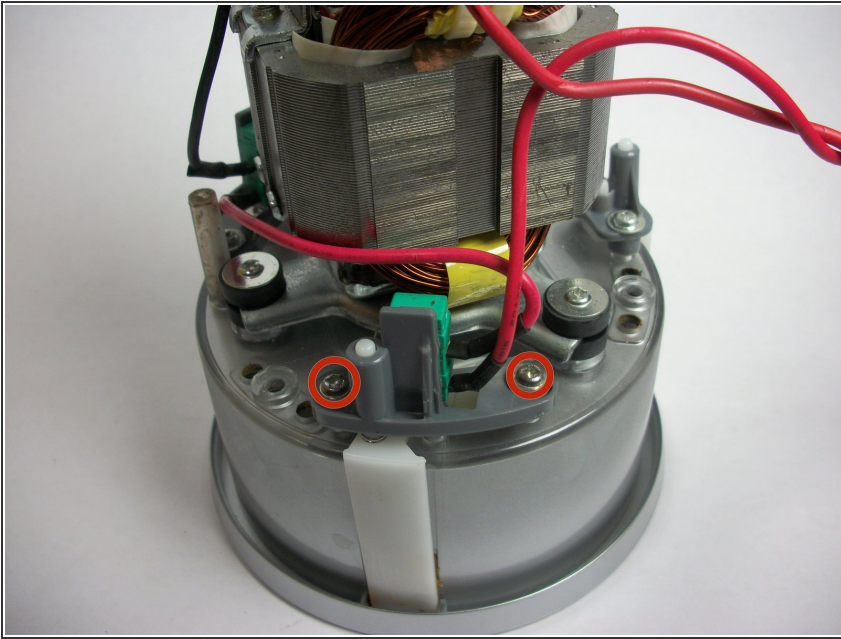
## Step 11



- Turn the NutriBullet powerbase upside down and remove the plastic casing by lifting it up.



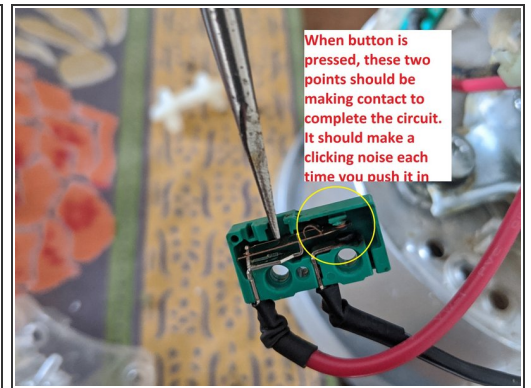
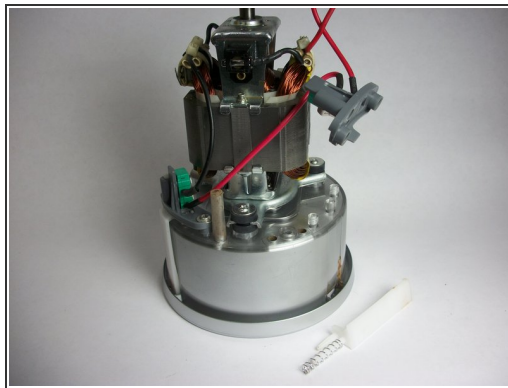
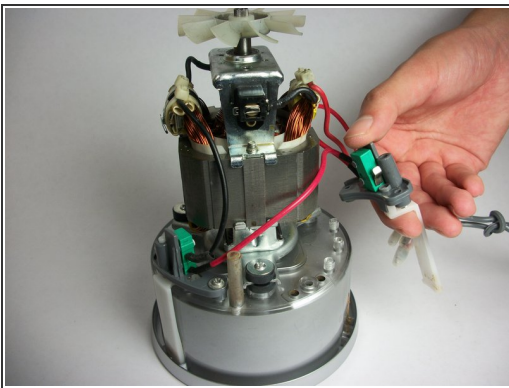
## Step 12



- Determine which activator(s) fail to work by applying pressure to them. Then, remove the two 15mm screws that hold the activators in place by using the Philips Head 2 screwdriver.

**i** There are a total of three activators on the device.

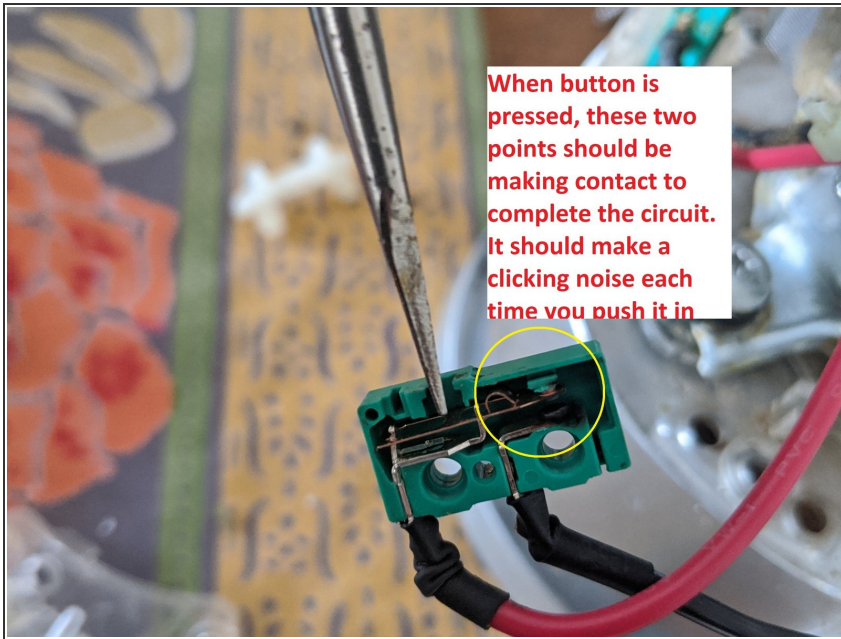
## Step 13



- Using slight tension, pull the loose activator from the slot.

**i** The white plastic activator should fall out and they can now be replaced.

## Step 14 — Repairing switch internally



- Open up the green switch. The metal tab and black button will fall out. Fiddle around with the metal switch on the inside to snap it back into place and then reassemble carefully. It should make a clicking noise.

To reassemble your device, follow these instructions in reverse order.