



Magic Bullet NutriBullet Curve Base

Prerequisite Only

Written By: Geary Yu





TOOLS:

- [Phillips #2 Screwdriver](#) (1)
-

Step 1 — Curve Base



- Unplug the device from the wall and turn the powerbase upside down.

Step 2



- Use a #2 Phillips Head Screwdriver to unscrew the four 10 mm screws located on the bottom of the power base.

Step 3



- Use slight tension to remove the plastic base from the NutriBullet once all of the screws are removed.

⚠ Once the plastic base is removed, there is a fan located in the center of the powerbase. Make sure the cord does not get caught or frayed by the fan.

Step 4



- Lift the power cord to remove it from the side slot on the curved base.

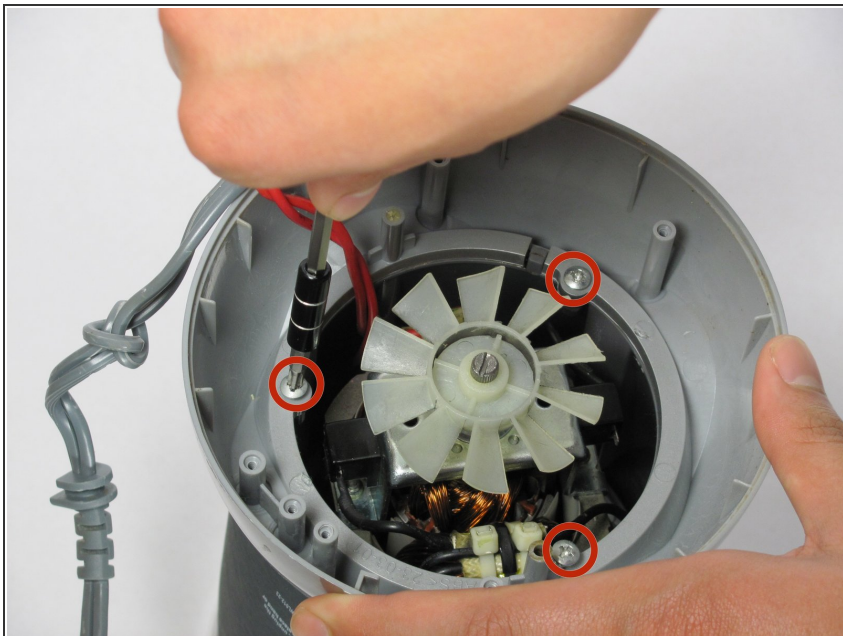
Step 5



- Use a #2 Phillips Head Screwdriver to remove the two 10 mm screws that secure the white bracket down.

i The white safety bracket holds the cord down. After removing it, the cord will be loosened.

Step 6



- Use a #2 Phillips Head Screwdriver to remove the three 10mm screws that keep the base in place.

Step 7



- Use slight tension to remove the curved base by lifting it upward off of the outside casing.

To reassemble your device, follow these instructions in reverse order.