



Magic Bullet NutriBullet Outside Casing Replacement

Replace the plastic casing which surrounds the NutriBullet powerbase.

Written By: Angela Wong



INTRODUCTION

The exterior component of the NutriBullet's powerbase consist of a silver, plastic shell casing. Use this guide to replace the cylindrical shell to ensure no leakage, exposure of wires or spinning components are showing through.



TOOLS:

- [Phillips #2 Screwdriver](#) (1)
-

Step 1 — Curve Base



- Unplug the device from the wall and turn the powerbase upside down.

Step 2



- Use a #2 Phillips Head Screwdriver to unscrew the four 10 mm screws located on the bottom of the power base.

Step 3



- Use slight tension to remove the plastic base from the NutriBullet once all of the screws are removed.

⚠ Once the plastic base is removed, there is a fan located in the center of the powerbase. Make sure the cord does not get caught or frayed by the fan.

Step 4



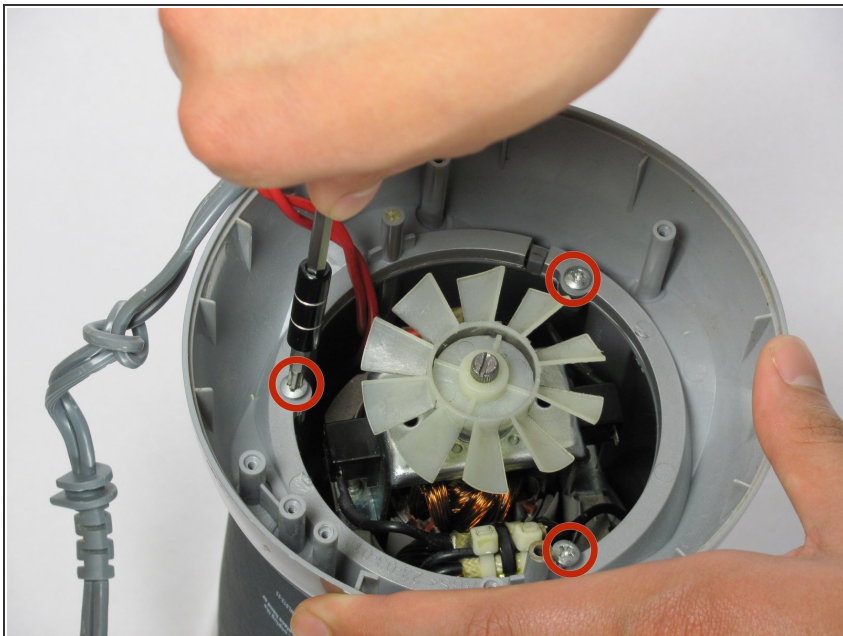
- Lift the power cord to remove it from the side slot on the curved base.

Step 5



- Use a #2 Phillips Head Screwdriver to remove the two 10 mm screws that secure the white bracket down.
- ⓘ The white safety bracket holds the cord down. After removing it, the cord will be loosened.

Step 6



- Use a #2 Phillips Head Screwdriver to remove the three 10mm screws that keep the base in place.

Step 7



- Use slight tension to remove the curved base by lifting it upward off of the outside casing.

Step 8 — Outside Casing



- Wiggle the outside casing upward until it separates from the powerbase.
- ⓘ Hold the ring at the bottom of the powerbase to receive a better grip.

To reassemble your device, follow these instructions in reverse order.