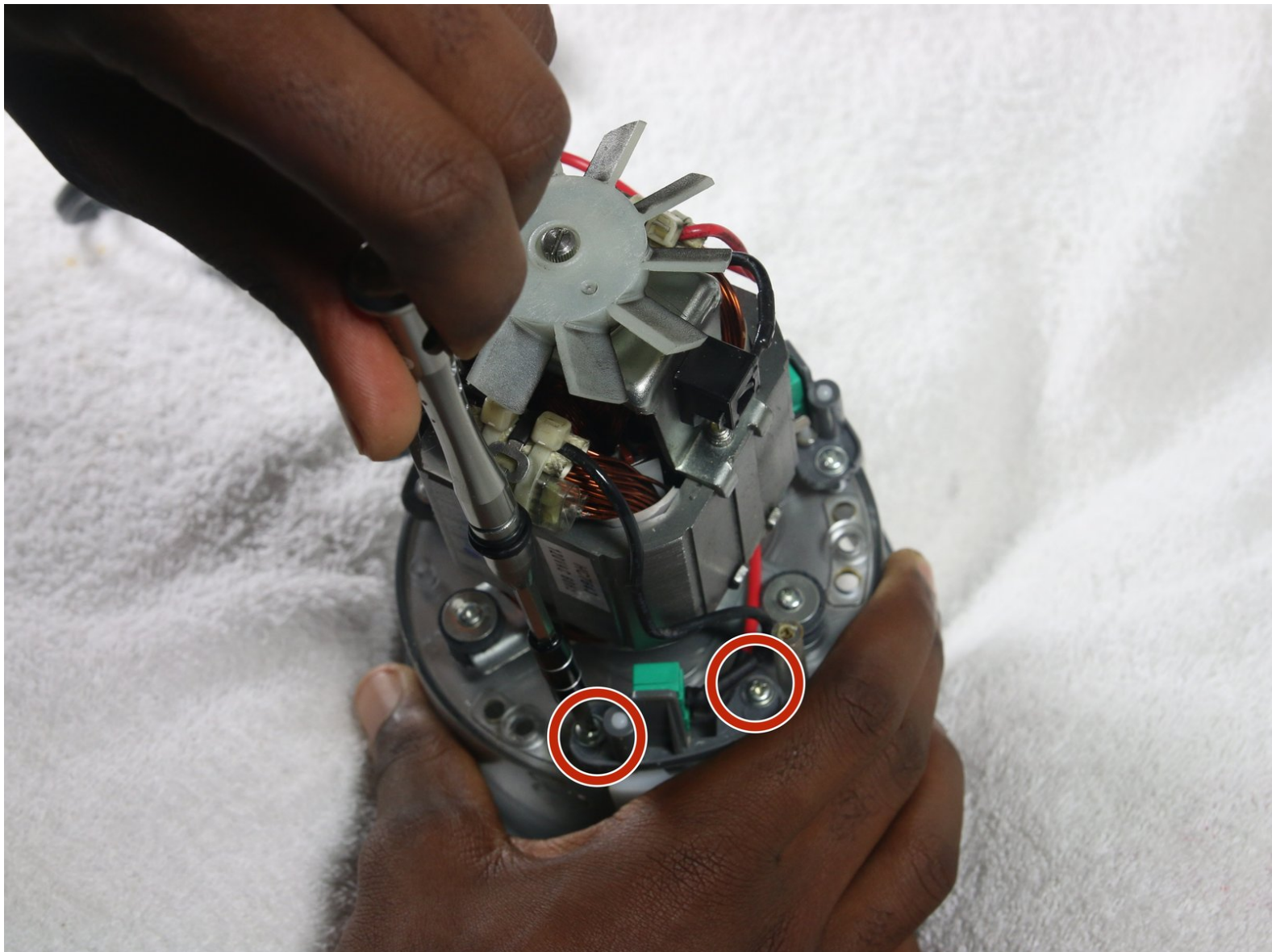




# Magic Bullet NutriBullet Pro Activator Replacement

This guide will teach you how to remove the activators from your Magic Bullet NutriBullet Pro if you have determined they are faulty.

Written By: Malcolm Smith Fraser



## INTRODUCTION

If your Magic Bullet NutriBullet Pro won't activate, and you have determined that the activators are the culprit, follow this guide to replace them. This guide will work to replace all three activators.

---

### TOOLS:

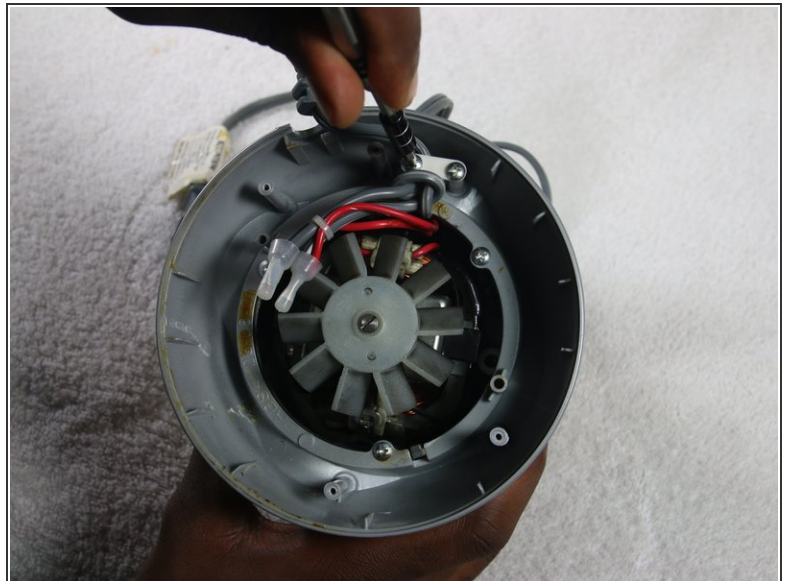
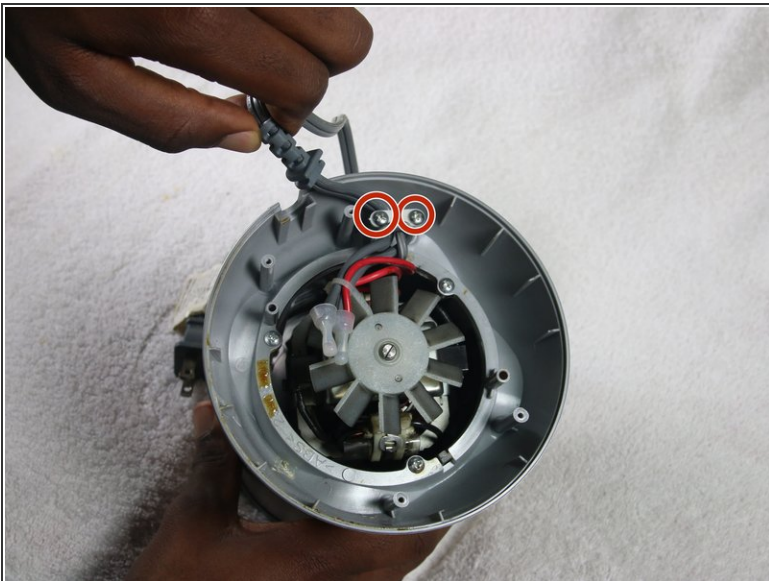
- [Tweezers](#) (1)
  - [Phillips #1 Screwdriver](#) (1)
  - [Phillips #2 Screwdriver](#) (1)
-

## Step 1 — Magic Bullet NutriBullet Pro Disassembly



- To start the disassembly of the Magic Bullet NutriBullet Pro you will begin from the bottom.
- Flip the device over to the bottom.
- Unscrew the four 1 cm screws using #2 Phillips Head Screwdriver.
- Remove the loose bottom portion of the device by pulling up from the bottom.

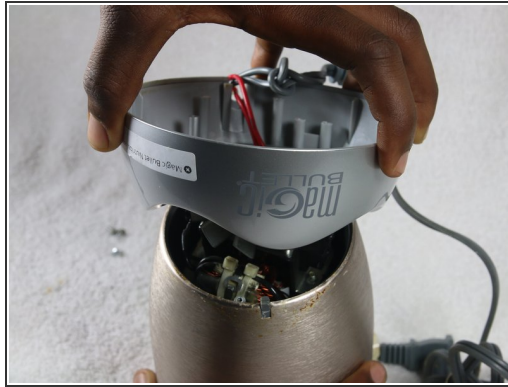
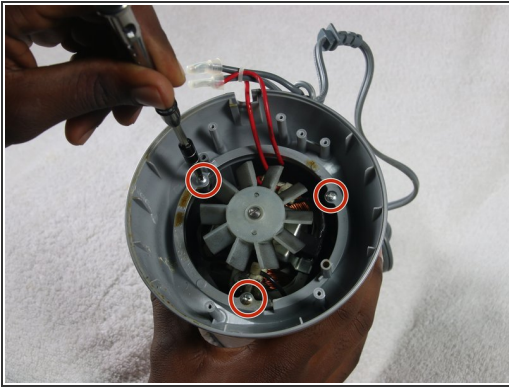
## Step 2



- Unscrew the two 1 cm screws holding down the power cord using the #2 Phillips Head Screwdriver.

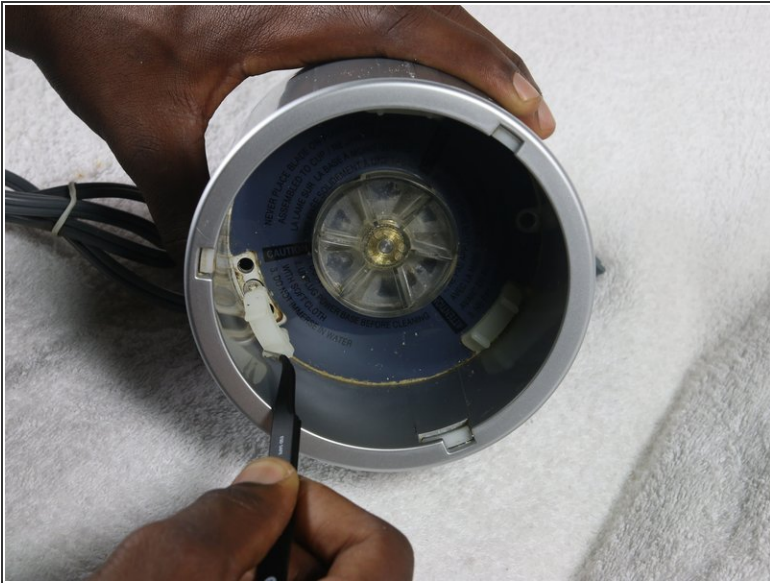


## Step 3



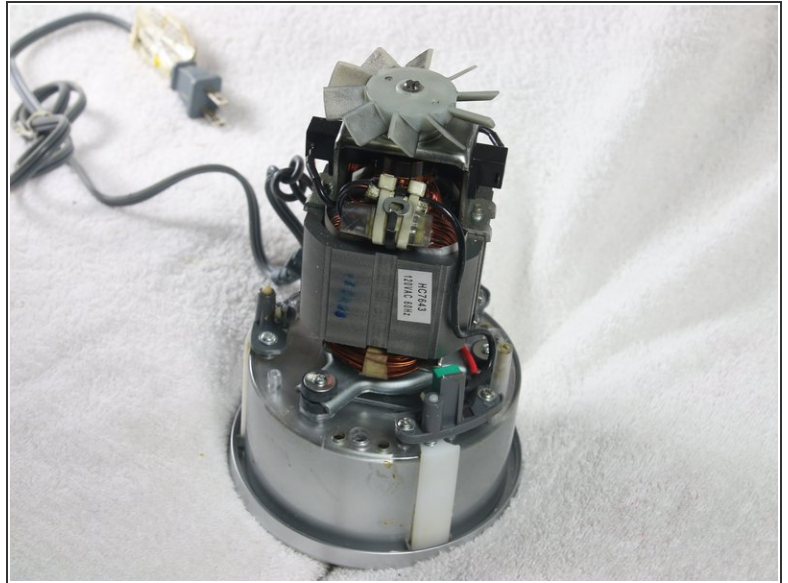
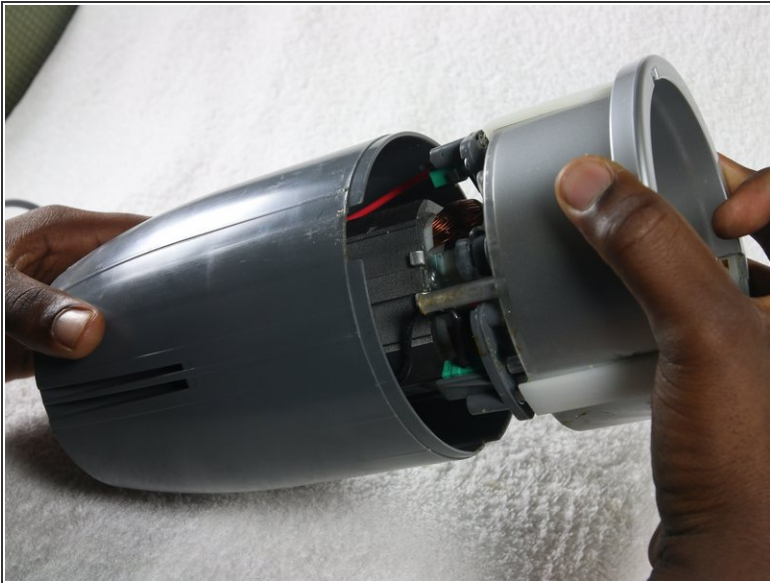
- Unscrew the three 1 cm screws on the device circled on the screws pictures using the #1 Philips Head Screwdriver.
- Lift off the grey plastic piece off.
- Slide off the silver metal piece.

## Step 4



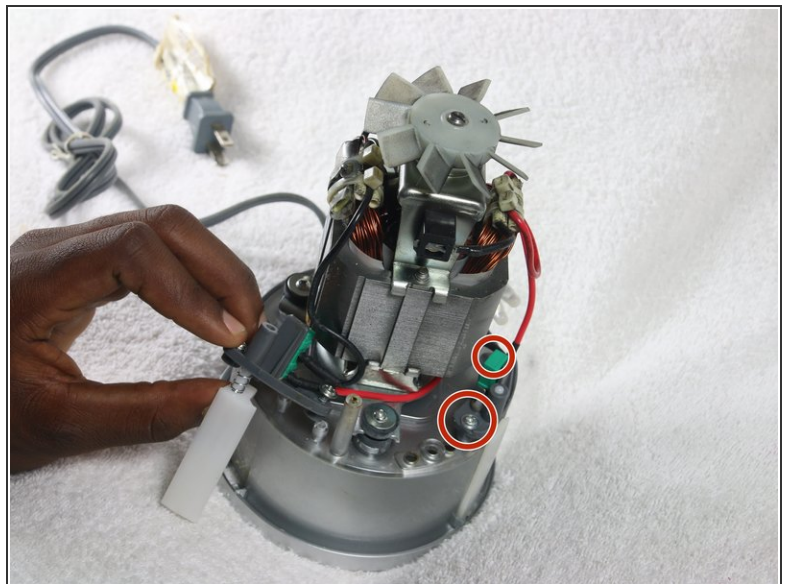
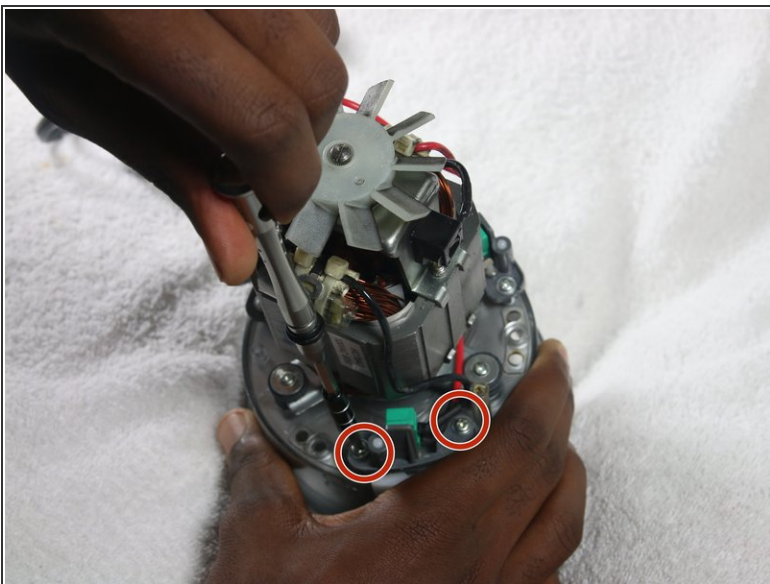
- Flip the device over.
- Remove the three rubber seals covering the screws by pulling the components upward with the tweezers.
- Unscrew the three 16 mm screws using the #2 Phillips Head Screwdriver.

## Step 5



- Pull off the casing from the device.

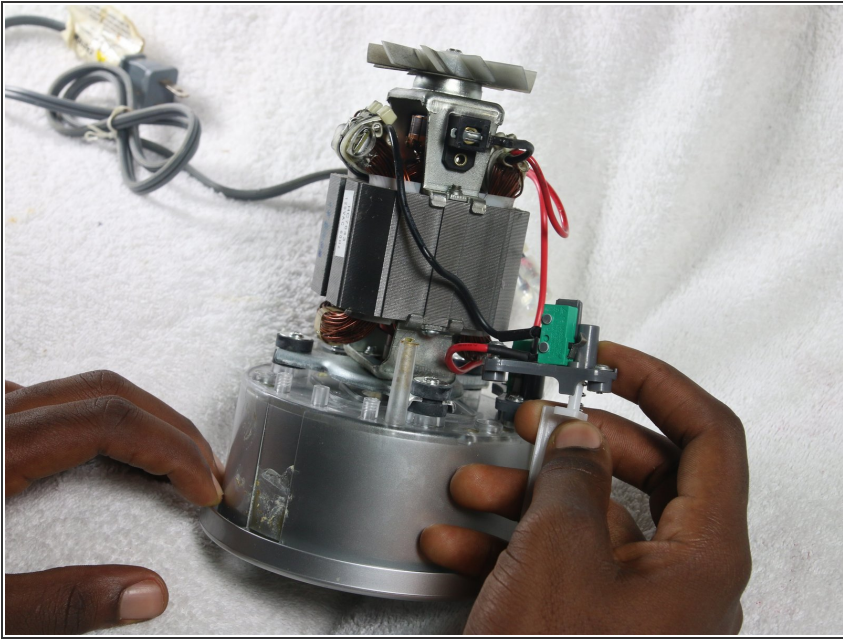
## Step 6 — Activator



- Remove the two 8 mm screws using the #2 Phillips Head Screwdriver while holding the activator in place.
- ⓘ There are three separate activators with two screws each.



## Step 7



- ⚠ Be careful of the spring flying out.
- Lift activator out of the Magic Bullet housing while holding the spring with tweezers.

To reassemble your device, follow these instructions in reverse order.