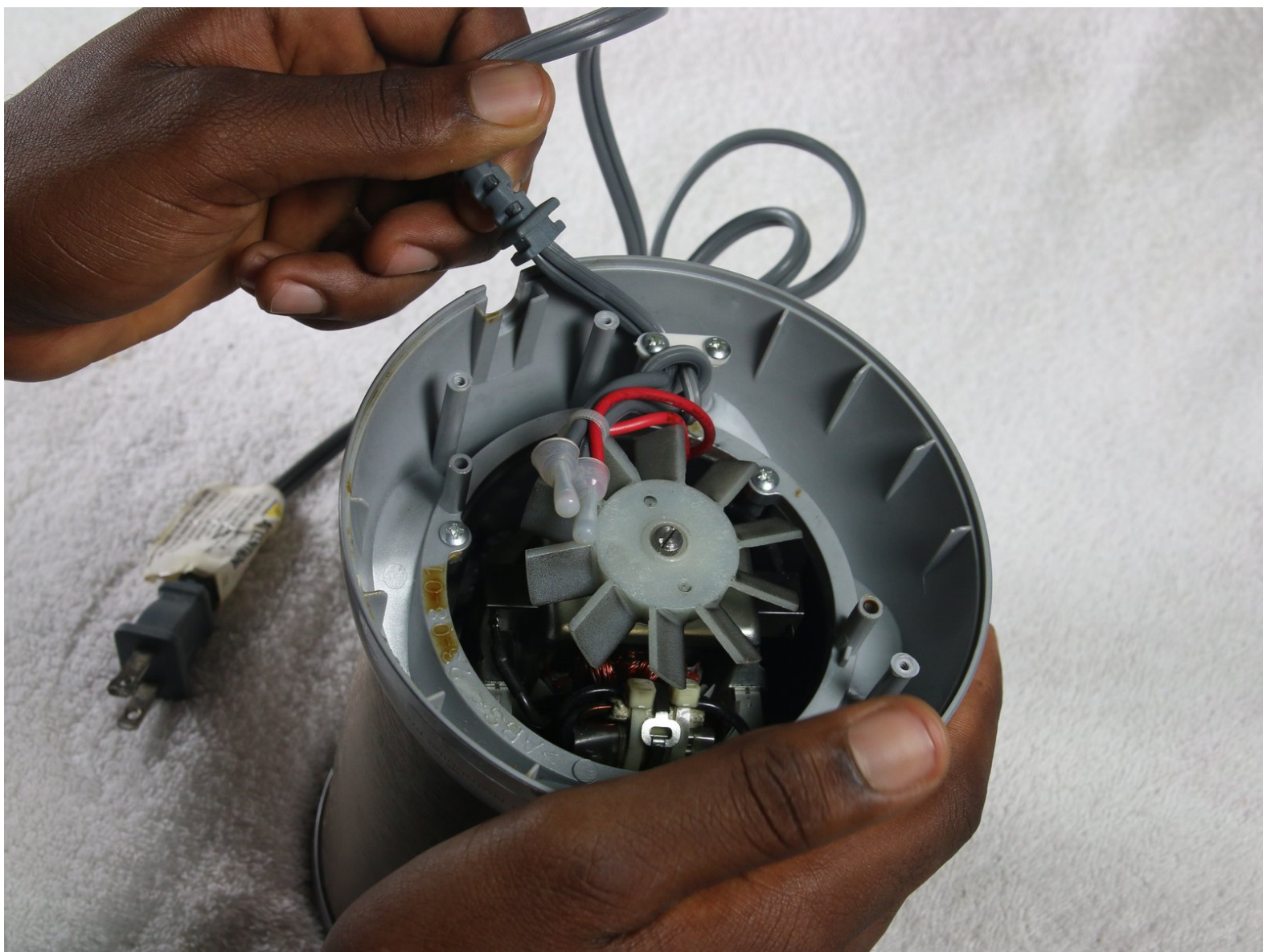




Magic Bullet NutriBullet Pro Power Cord Replacement

This guide will walk you through the steps necessary to replace the power cord in your Magic Bullet Nutri Bullet Pro.

Written By: Malcolm Smith Fraser



INTRODUCTION

If your Magic Bullet Nutri Bullet Pro is not receiving power as a result of a faulty power cord, use this guide to replace the power cord. To use his guide, first follow steps one and two of the disassembly guide.



TOOLS:

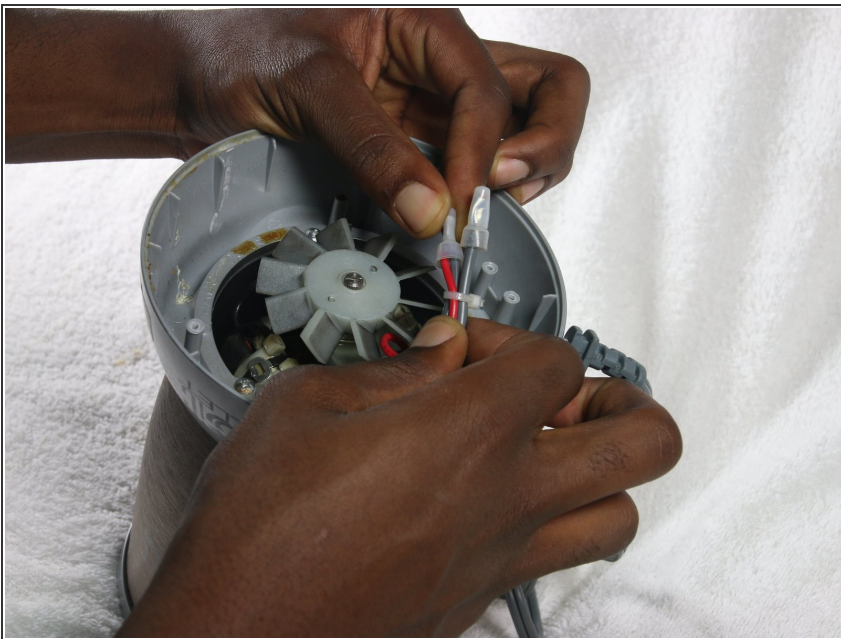
- [Phillips #0 Screwdriver](#) (1)
-

Step 1 — Power Cord



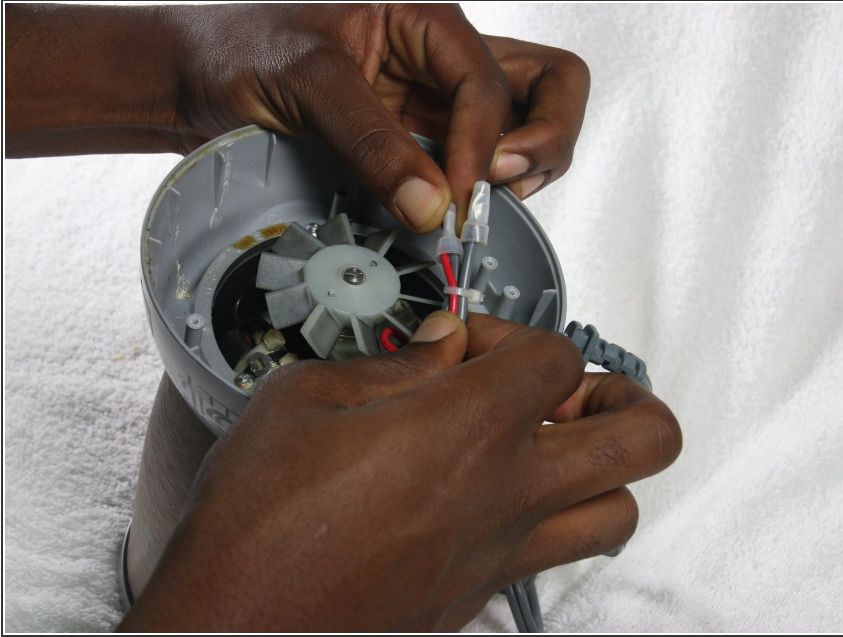
- Follow steps one and two from [Magic Bullet NutriBullet Pro Disassembly](#) before following these next steps.

Step 2



- Cut the zip tie using scissors.

Step 3



- Pull off the rubber covers and separate the wires using a soldering kit.

To reassemble your device, follow these instructions in reverse order.